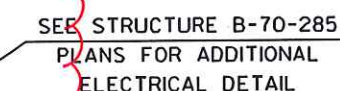


SHEET 2 OF 7

1

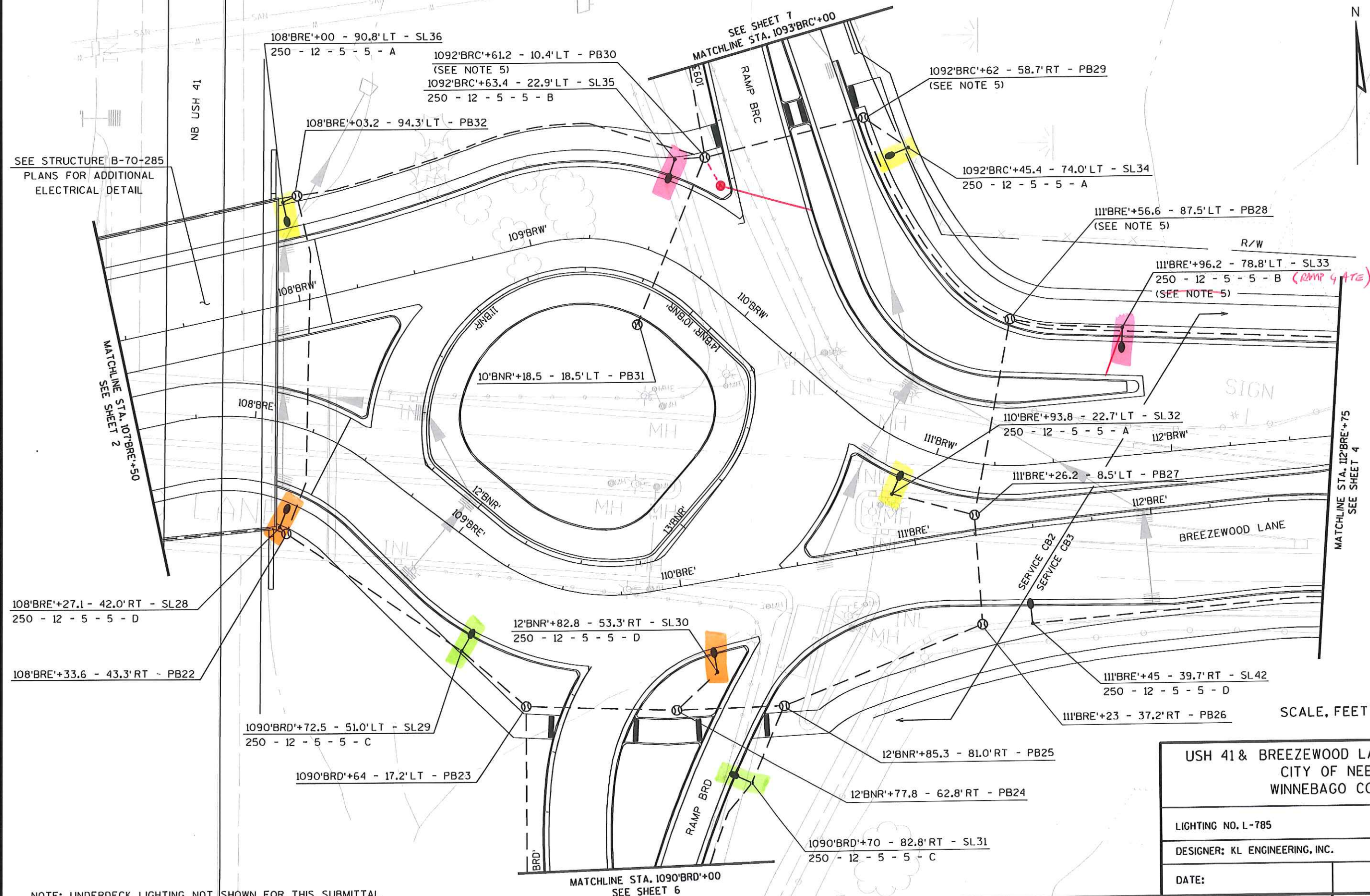


SEE SHEET 2 OF 5
MATCHLINE STA. 107+86.50

SHEET 2 OF 7

SHEET 2A OF 7





USH 41 & BREEZEWOOD LANE INTERCHANGE
CITY OF NEENAH
WINNEBAGO COUNTY

LIGHTING NO. L-785

DESIGNER: KL ENGINEERING, INC.

DATE:

SHEET 3 OF 7

PROJECT NO: 1120-09-83

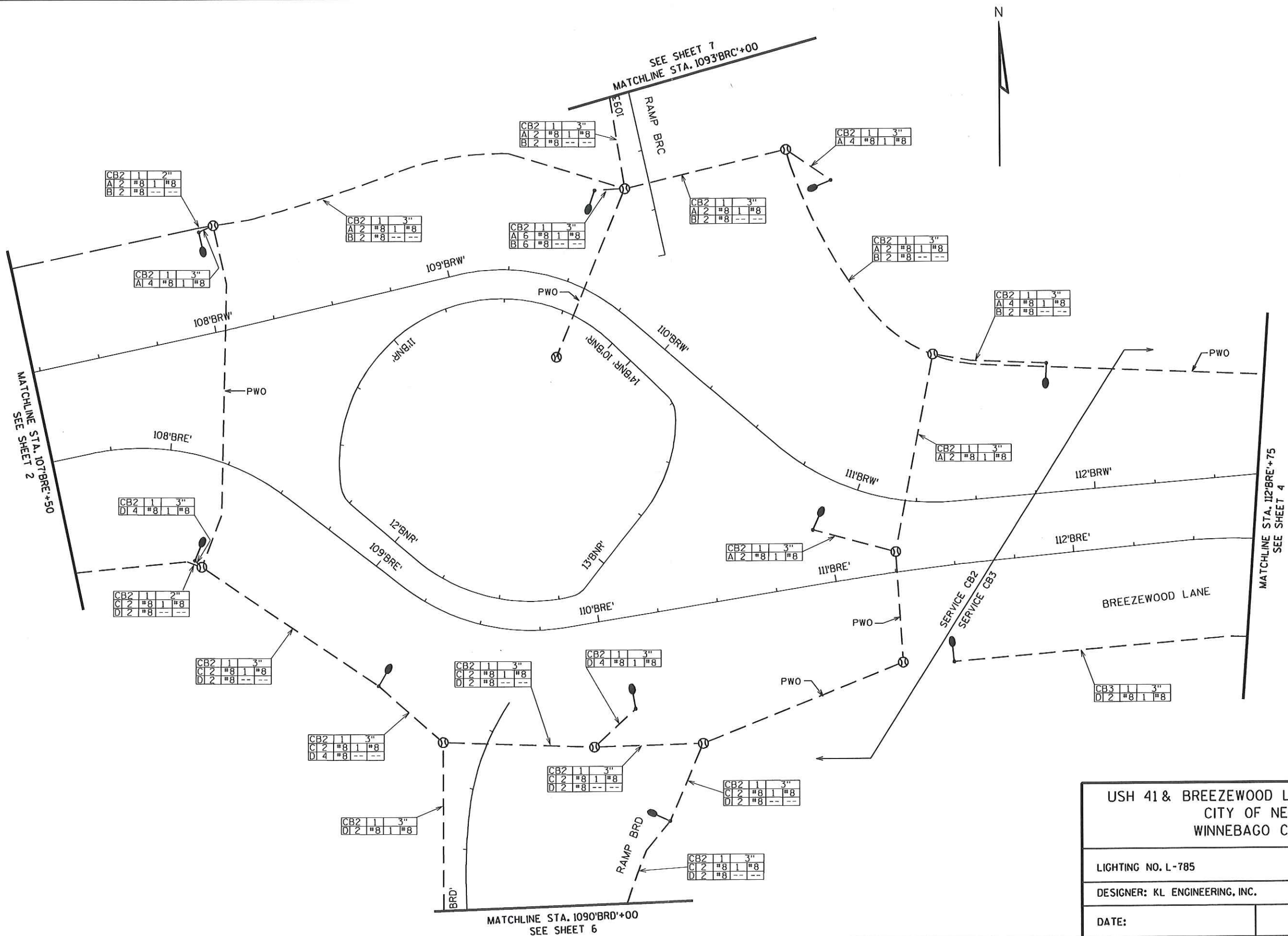
HWY: USH 41

COUNTY: WINNEBAGO

LIGHTING - BREEZEWOOD LANE

SHEET 175

E



USH 41 & BREEZEWOOD LANE INTERCHANGE
CITY OF NEENAH
WINNEBAGO COUNTY

LIGHTING NO. L-785

DESIGNER: KL ENGINEERING, INC.

DATE:

SHEET 3A OF 7

PROJECT NO: 1120-09-83

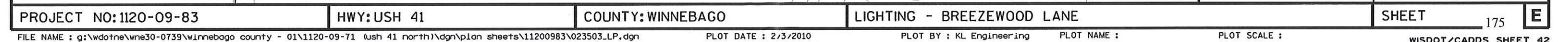
HWY: USH 41

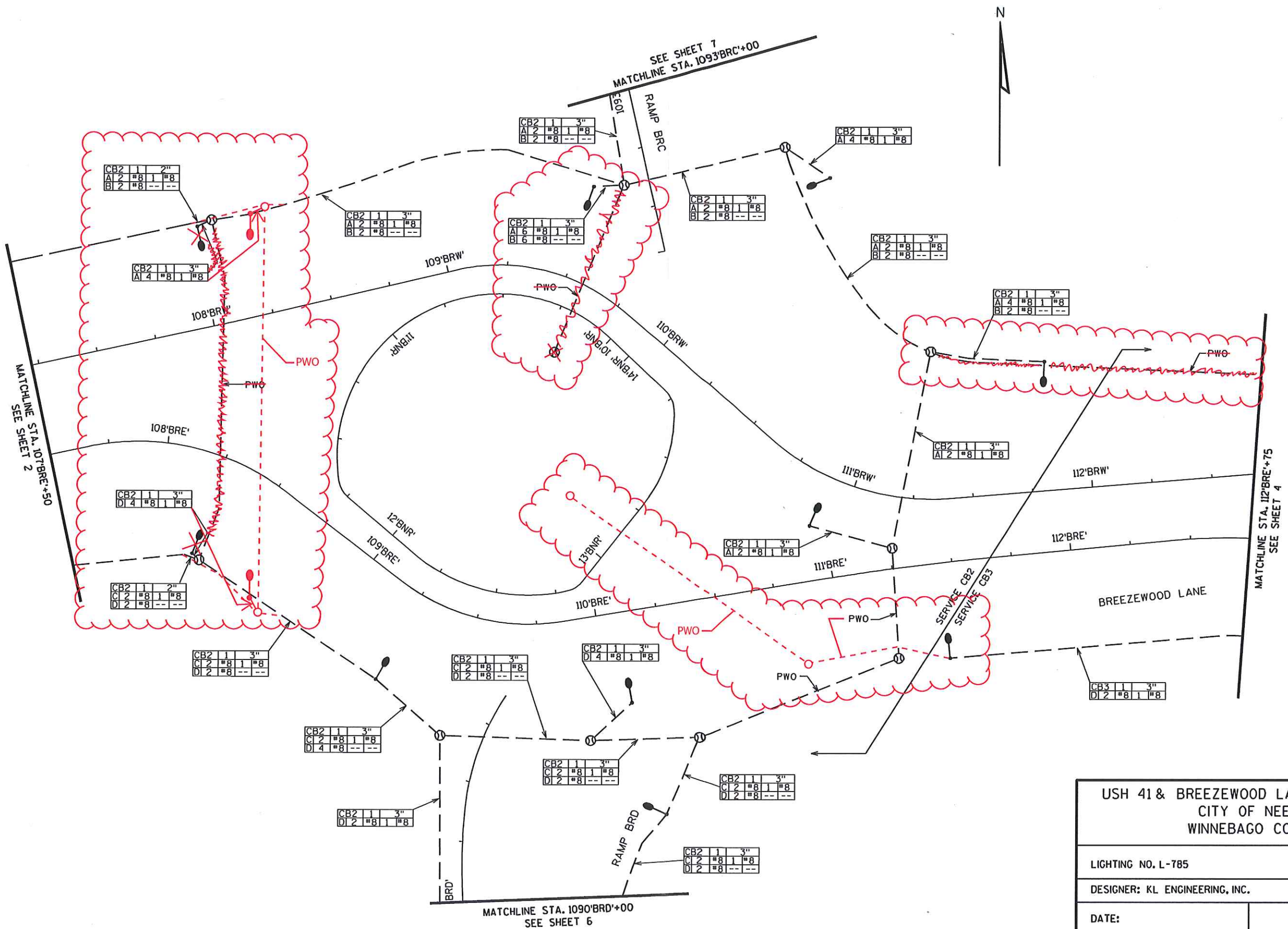
COUNTY: WINNEBAGO

LIGHTING - BREEZEWOOD LANE

SHEET 176

E





USH 41 & BREEZEWOOD LANE INTERCHANGE
CITY OF NEENAH
WINNEBAGO COUNTY

LIGHTING NO. L-785

DESIGNER: KL ENGINEERING, INC.

DATE:

SHEET 3A OF 7

PROJECT NO: 1120-09-83

HWY: USH 41

COUNTY: WINNEBAGO

LIGHTING - BREEZEWOOD LANE

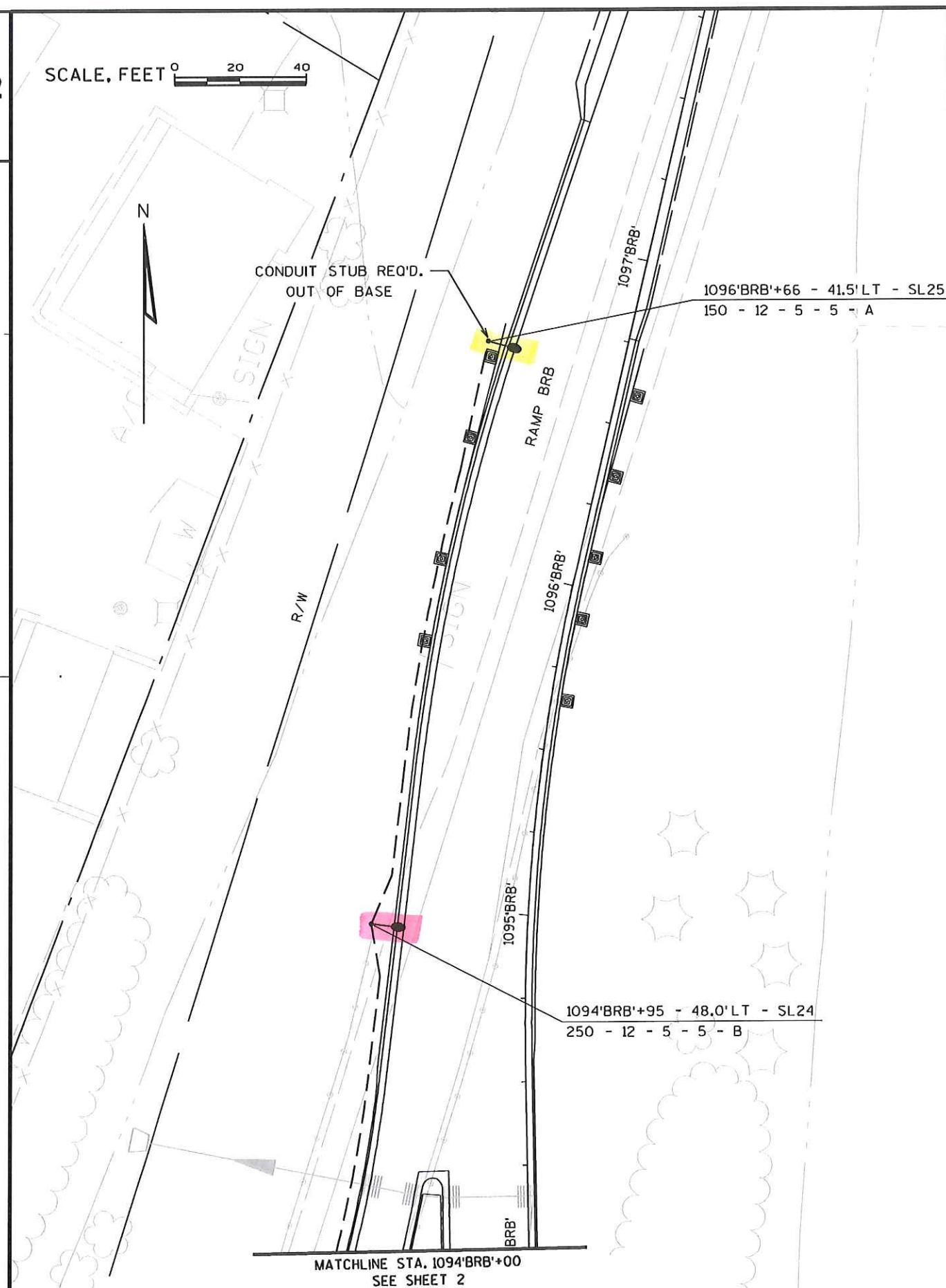
SHEET

176

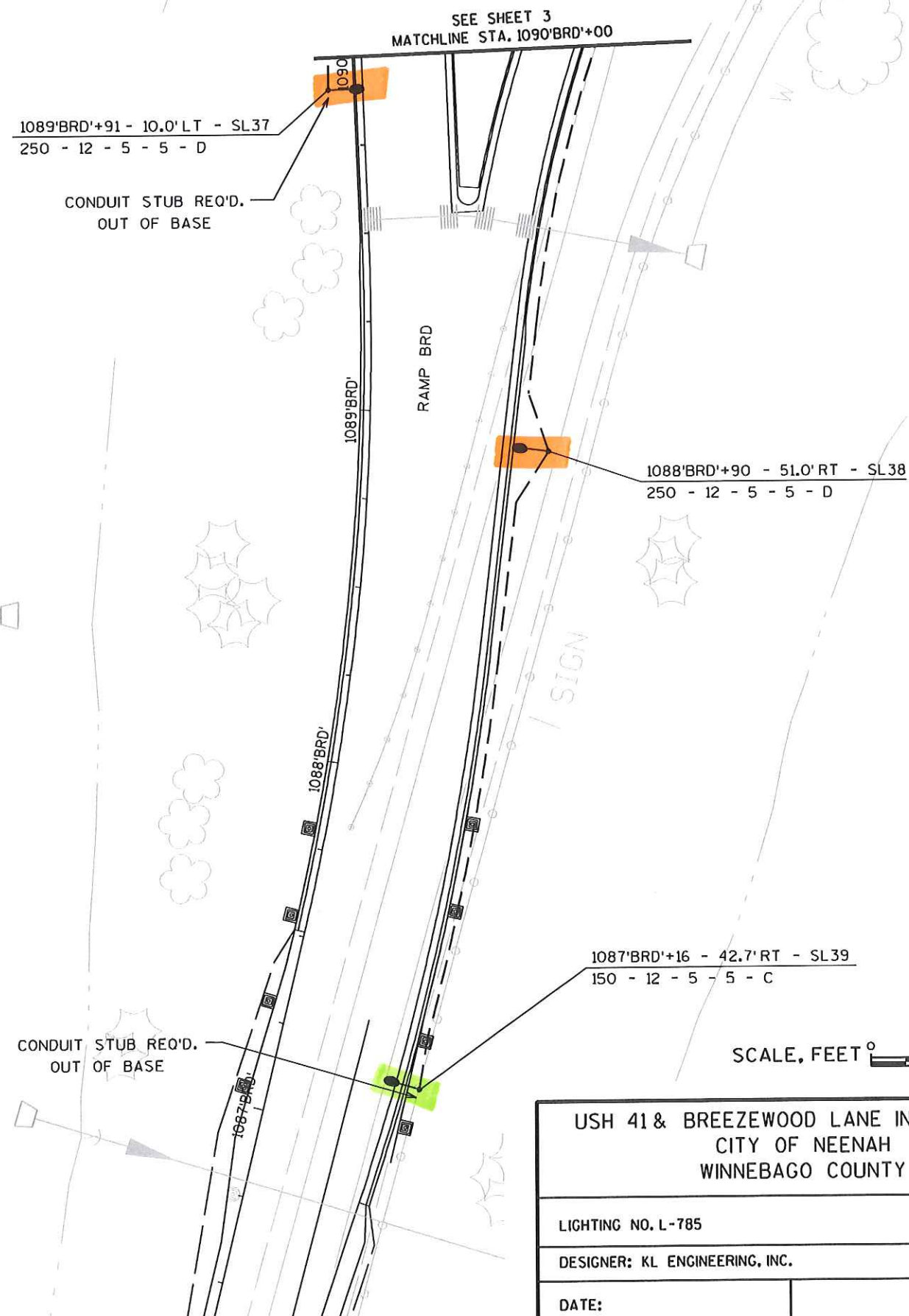
E

2

SCALE, FEET 0 20 40



2



PROJECT NO: 1120-09-83

HWY: USH 41

COUNTY: WINNEBAGO

LIGHTING - RAMP BRB / RAMP BRD

SHEET 181

E

FILE NAME : g:\wdotne\wne30-0739\winnebago county - 01\1120-09-71 (ush 41 north)\dgn\plan sheets\11200983\023506_LP.dgn

PLOT DATE : 2/3/2010

PLOT BY : KL Engineering

PLOT NAME :

PLOT SCALE :

WISDOT/CADD SHEET 42

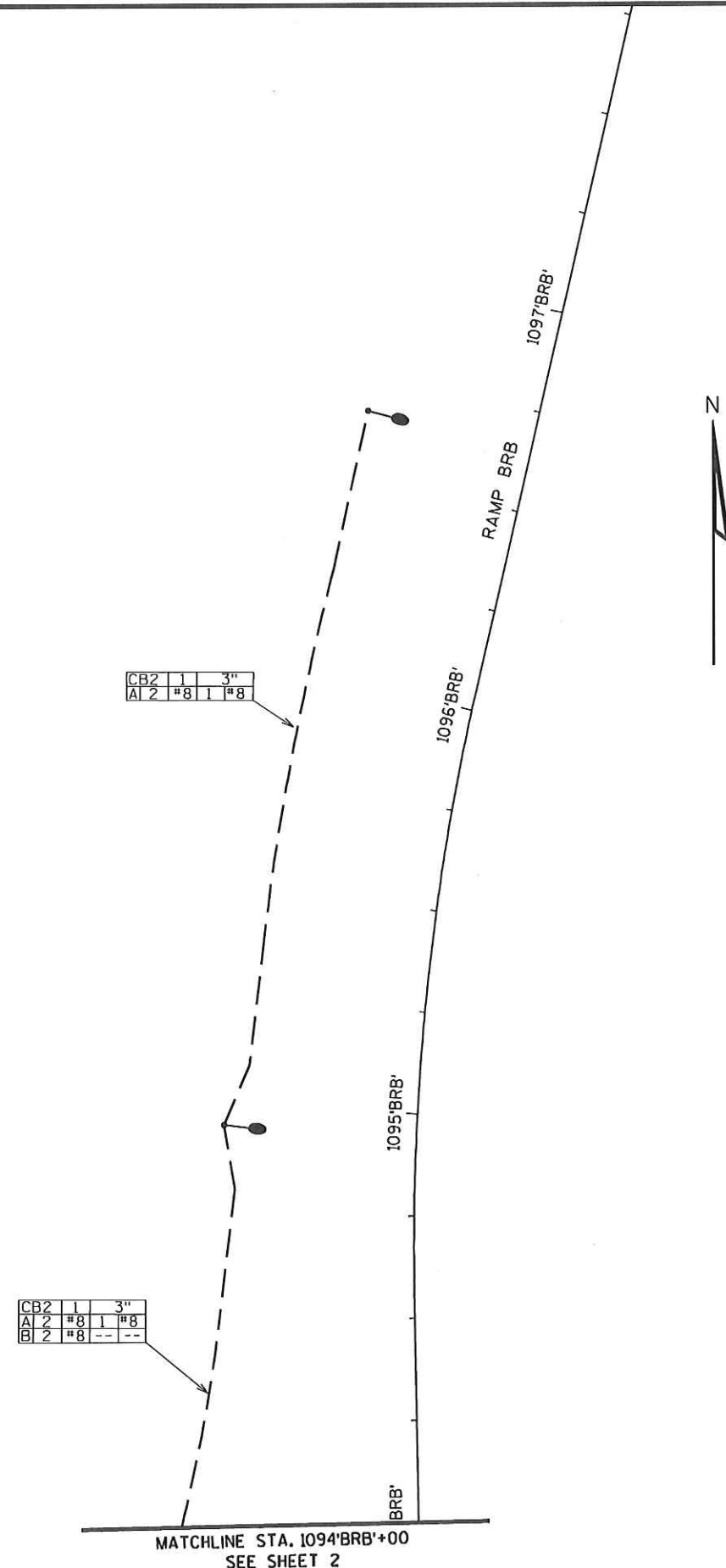
USH 41 & BREEZEWOOD LANE INTERCHANGE
CITY OF NEENAH
WINNEBAGO COUNTY

LIGHTING NO. L-785

DESIGNER: KL ENGINEERING, INC.

DATE:

SHEET 6 OF 7



PROJECT NO: 1120-09-83

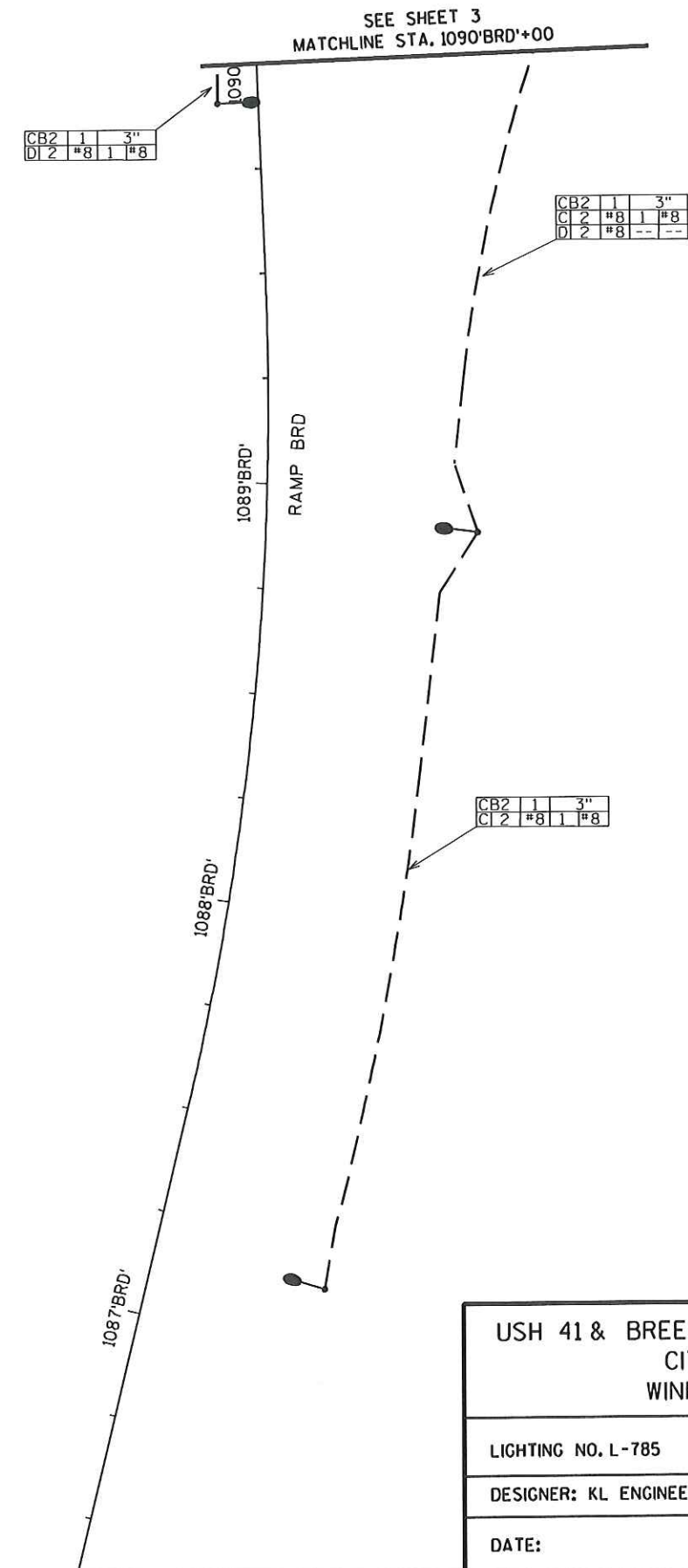
HWY: USH 41

COUNTY: WINNEBAGO

LIGHTING - RAMP BRB / RAMP BRD

SHEET 182

E

USH 41 & BREEZEWOOD LANE INTERCHANGE
CITY OF NEENAH
WINNEBAGO COUNTY

LIGHTING NO. L-785

DESIGNER: KL ENGINEERING, INC.

DATE:

SHEET 6A OF 7

USH 41 & BREEZEWOOD LANE INTERCHANGE
CITY OF NEENAH
WINNEBAGO COUNTY

LIGHTING NO. L-785

DESIGNER: KL ENGINEERING, INC.

DATE:

SHEET 7 OF 7

SCALE, FEET 0 20 40

N

CONDUIT STUB REQ'D.
OUT OF BASE1095'BRC'+09 - 8.0' LT - SL41
150 - 12 - 5 - 5 - B

RAMP BRC

MATCHLINE STA. 1093'BRC'+00
SEE SHEET 31093'BRC'+37 - 8.0' LT - SL40
250 - 12 - 5 - 5 - A

SHEET 7 OF 7

PROJECT NO: 1120-09-83

HWY: USH 41

COUNTY: WINNEBAGO

LIGHTING - RAMP BRA / RAMP BRC

SHEET 183

E

USH 41 & BREEZEWOOD LANE INTERCHANGE CITY OF NEENAH WINNEBAGO COUNTY	
LIGHTING NO. L-785	
DESIGNER: KL ENGINEERING, INC.	
DATE:	SHEET 7A OF 7

SCALE, FEET 0 20 40



SEE SHEET 2
MATCH LINE STA. 1091'BRA'+75

CB2	1	3"
C	2	#8 1 #8
D	2	#8 -- --

1090'BRA'

RAMP BRA

1089'BRA'

CB2	1	3"
C	2	#8 1 #8
D	2	#8 1 #8

1088'BRA'



SCALE, FEET 0 20 40

1096'BRC'

1095'BRC'

RAMP BRC

CB2	1	3"
C	2	#8 1 #8
D	2	#8 1 #8

1094'BRC'

BRC'

MATCHLINE STA. 1093'BRC'+00
SEE SHEET 3

CB2	1	3"
A	2	#8 1 #8
B	2	#8 -- --

