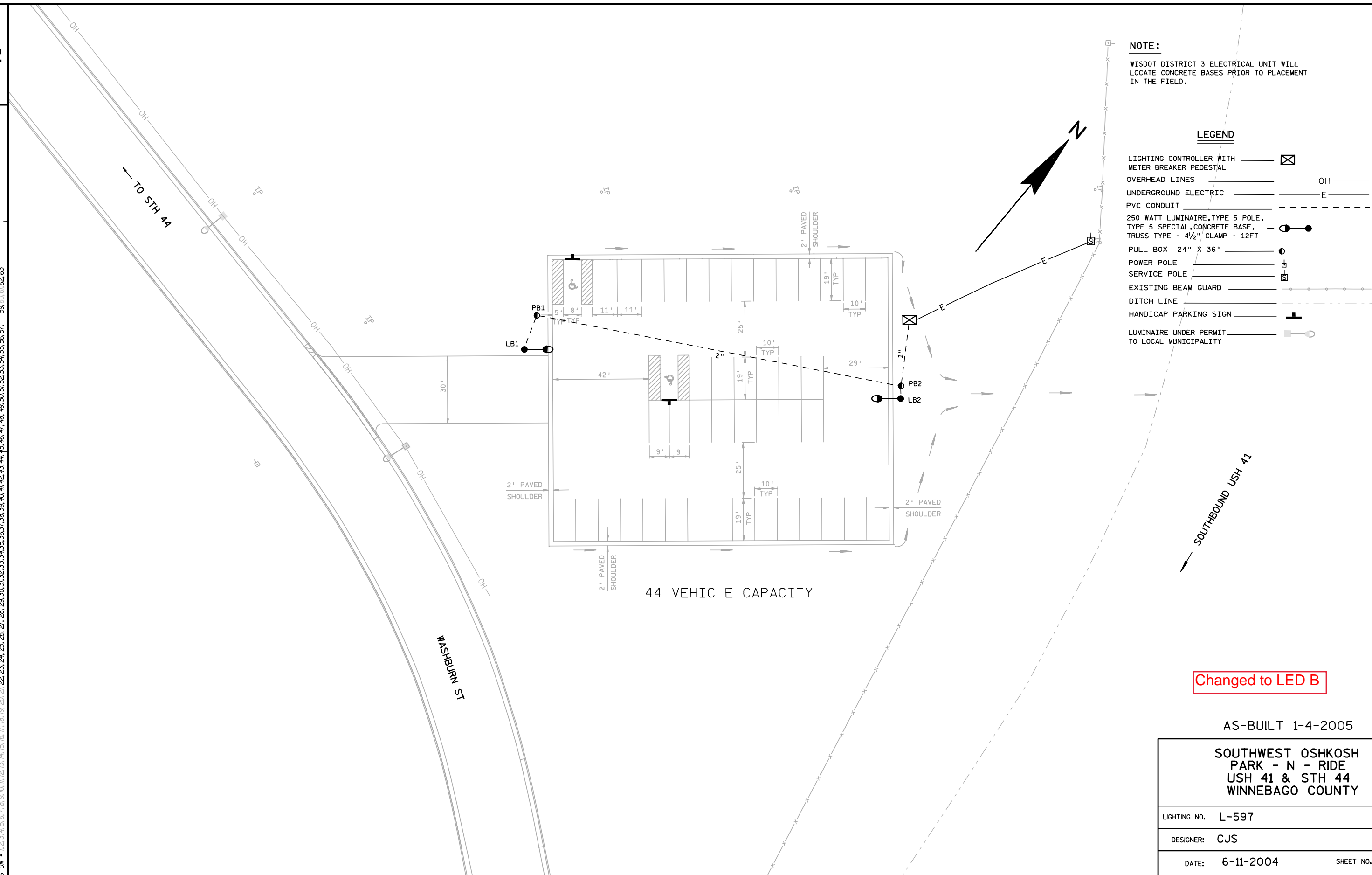


LEVELS ON - 1, 2, 3, 4, 5, 6, 7, 8, 9, 10, 11, 12, 13, 14, 15, 16, 17, 18, 19, 20, 21, 22, 23, 24, 25, 26, 27, 28, 29, 30, 31, 32, 33, 34, 35, 36, 37, 38, 39, 40, 41, 42, 43, 44, 45, 46, 47, 48, 49, 50, 51, 52, 53, 54, 55, 56, 57, 58, 60, 61, 62, 63



Changed to LED B

AS-BUILT 1-4-2005

SOUTHWEST OSHKOSH  
PARK - N - RIDE  
USH 41 & STH 44  
WINNEBAGO COUNTY

LIGHTING NO. L-597

DESIGNER: CJS

DATE: 6-11-2004

SHEET NO. 1 OF 1

STATE PROJECT NUMBER: 6496-02-71

HWY: STH 91

COUNTY: WINNEBAGO

SOUTHWEST OSHKOSH PARK &amp; RIDE (L-597)

SCALE, FEET

SHEET NO:

E