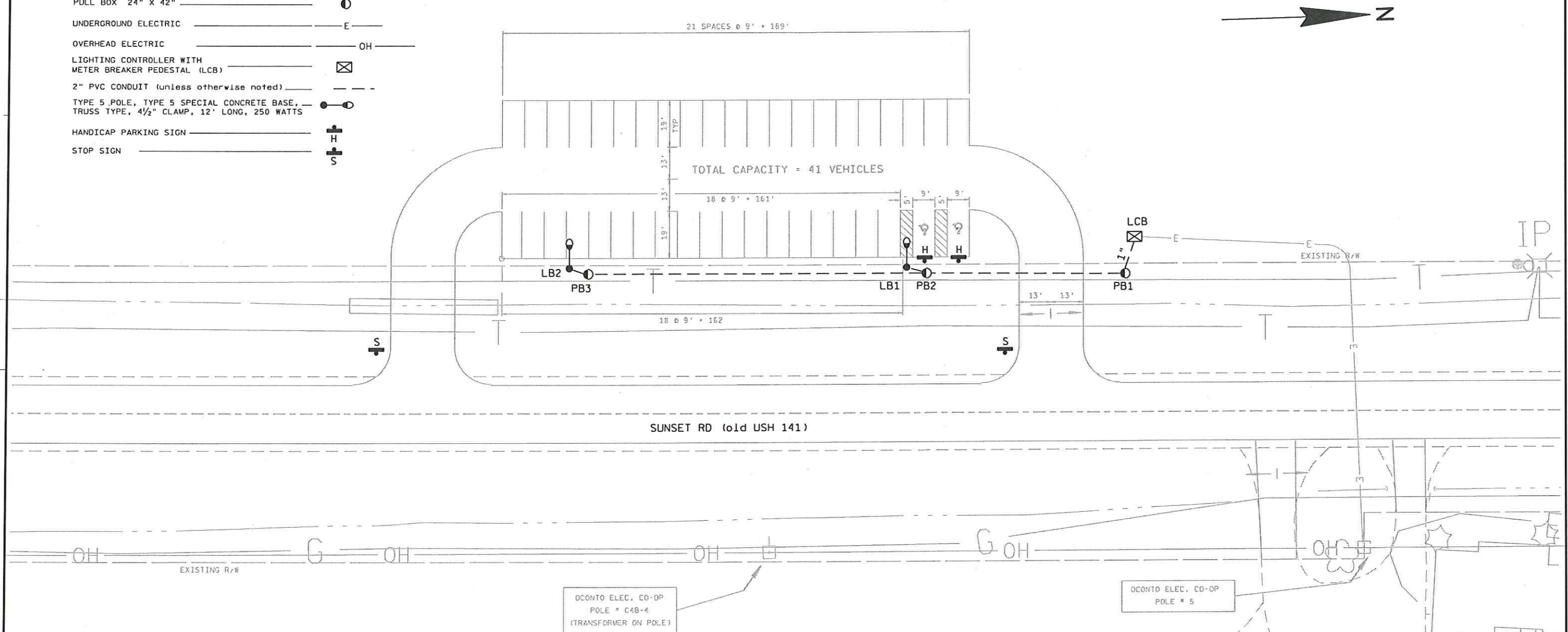


LEGEND

POWER POLE	
SERVICE POLE	
PULL BOX 24" X 42"	
UNDERGROUND ELECTRIC	
OVERHEAD ELECTRIC	
LIGHTING CONTROLLER WITH METER BREAKER PEDESTAL (LCB)	
2" PVC CONDUIT (unless otherwise noted)	
TYPE 5 POLE, TYPE 5 SPECIAL CONCRETE BASE, TRUSS TYPE, 4 1/2" CLAMP, 12' LONG, 250 WATTS	
HANDICAP PARKING SIGN	
STOP SIGN	



GENERAL NOTES

WISCONSIN DOT DISTRICT 3 SHALL APPROVE FINAL LOCATIONS FOR ALL CONCRETE BASES IN THE FIELD PRIOR TO CONSTRUCTION (920) 492-5654 OR 492-5628.

THE LOCATION OF EXISTING AND PROPOSED UTILITY INSTALLATIONS AS SHOWN ON THE PLANS ARE APPROXIMATE. THERE MAY BE OTHER UTILITY INSTALLATIONS WITHIN THE PROJECT AREA THAT ARE NOT SHOWN. THE CONTRACTOR SHALL VERIFY THE LOCATIONS OF ALL UTILITIES PRIOR TO CONSTRUCTION.

Changed to LED B

AS-BUILT 10-3-2006

COLEMAN PARK & RIDE
USH 141 & CTH B
MARINETTE COUNTY

LIGHTING NO. L-606

DESIGNED BY CJS

Date 12-23-2003

PROJECT NO:1490-14-73

HWY: USH 141

COUNTY: MARINETTE

COLEMAN PARK & RIDE (L-606)

SHEET NO: 1 of 1

E