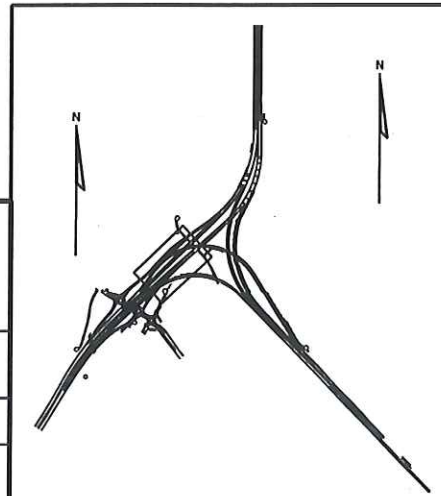


USH 41 & IH 43 SYSTEM INTERCHANGE  
 NORTH LEG  
 EAST DEERFIELD DRIVE CUL DE SAC - 480V  
 VILLAGE OF HOWARD, BROWN COUNTY  
 LIGHTING NO. L05-0870  
 DESIGNER: KL ENGINEERING, INC.  
 DATE: 8-01-2014

SEE SHEET #55 FOR FLY  
 OVER RAMP LIGHTING

USH 41 & IH 43 SYSTEM INTERCHANGE  
 EAST LEG  
 HURLBUT COURT CUL DE SAC - 480V  
 VILLAGE OF HOWARD, BROWN COUNTY  
 LIGHTING NO. L05-0867  
 DESIGNER: KL ENGINEERING, INC.  
 DATE: 8-01-2014

USH 41 & IH 43 SYSTEM INTERCHANGE  
 SOUTH LEG - VELD AVENUE - 480V  
 VILLAGE OF HOWARD, BROWN COUNTY  
 LIGHTING NO. L05-0850  
 DESIGNER: KL ENGINEERING, INC.  
 DATE: 8-01-2014





USH 41 & IH 43 SYSTEM INTERCHANGE  
EAST LEG  
HURLBUT COURT CUL DE SAC - 480V  
VILLAGE OF HOWARD, BROWN COUNTY

LIGHTING NO. L05-0867

DESIGNER: KL ENGINEERING, INC.

DATE: 8-01-2014

SHEET 3 OF 11

USH 41 & IH 43 SYSTEM INTERCHANGE  
NORTH LEG  
EAST DEERFIELD DRIVE CUL DE SAC - 480V  
VILLAGE OF HOWARD, BROWN COUNTY

LIGHTING NO. L05-0870

DESIGNER: KL ENGINEERING, INC.

DATE: 8-01-2014

SHEET 3 OF 8

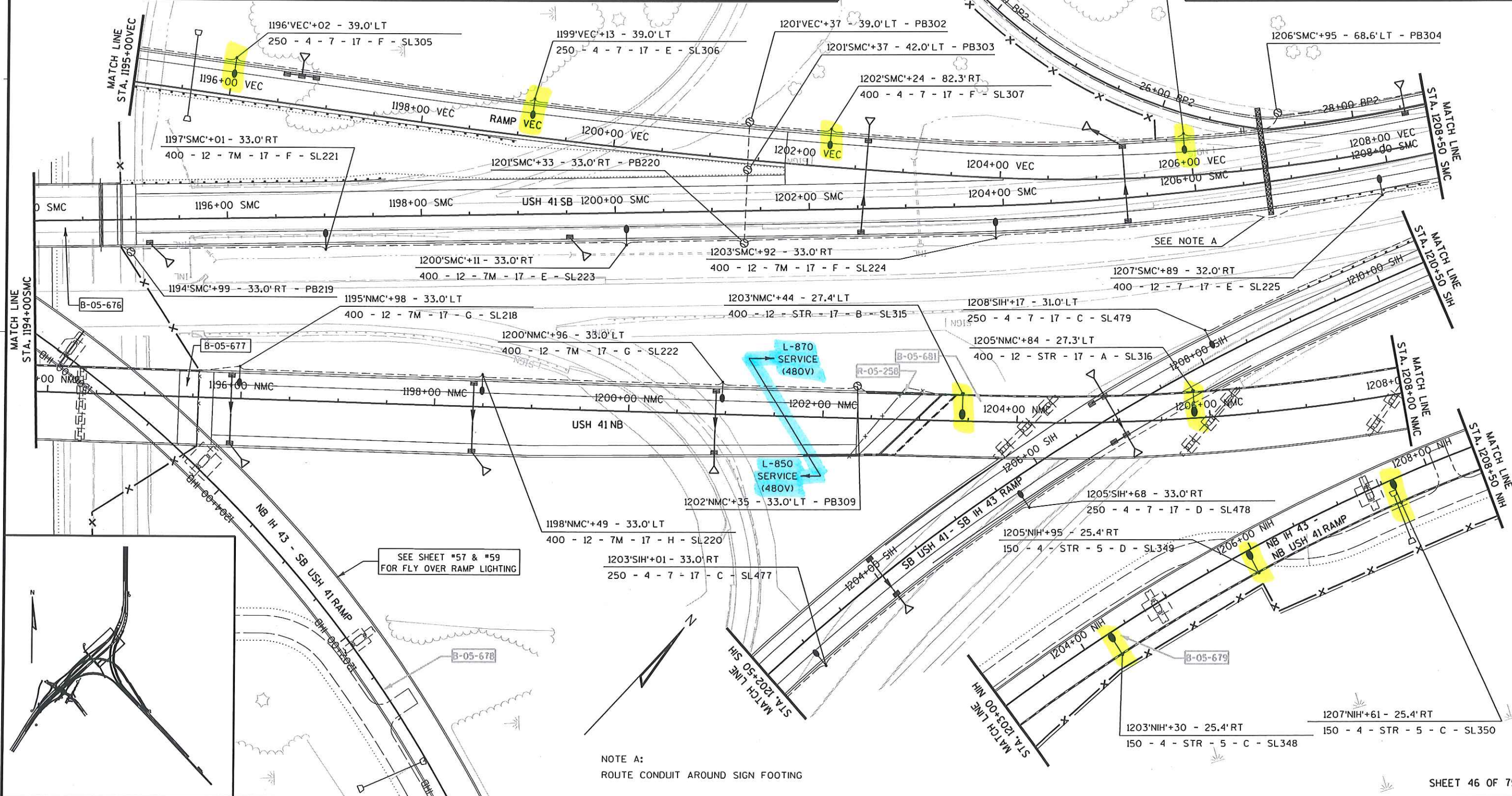
USH 41 & IH 43 SYSTEM INTERCHANGE  
SOUTH LEG - VELP AVENUE - 480V  
VILLAGE OF HOWARD, BROWN COUNTY

LIGHTING NO. L05-0850

DESIGNER: KL ENGINEERING, INC.

DATE: 8-01-2014

SHEET 5 OF 5



PROJECT NO: 1133-10-77

HWY: USH 41

COUNTY: BROWN

LIGHTING PLANS

SHEET

560

E





T

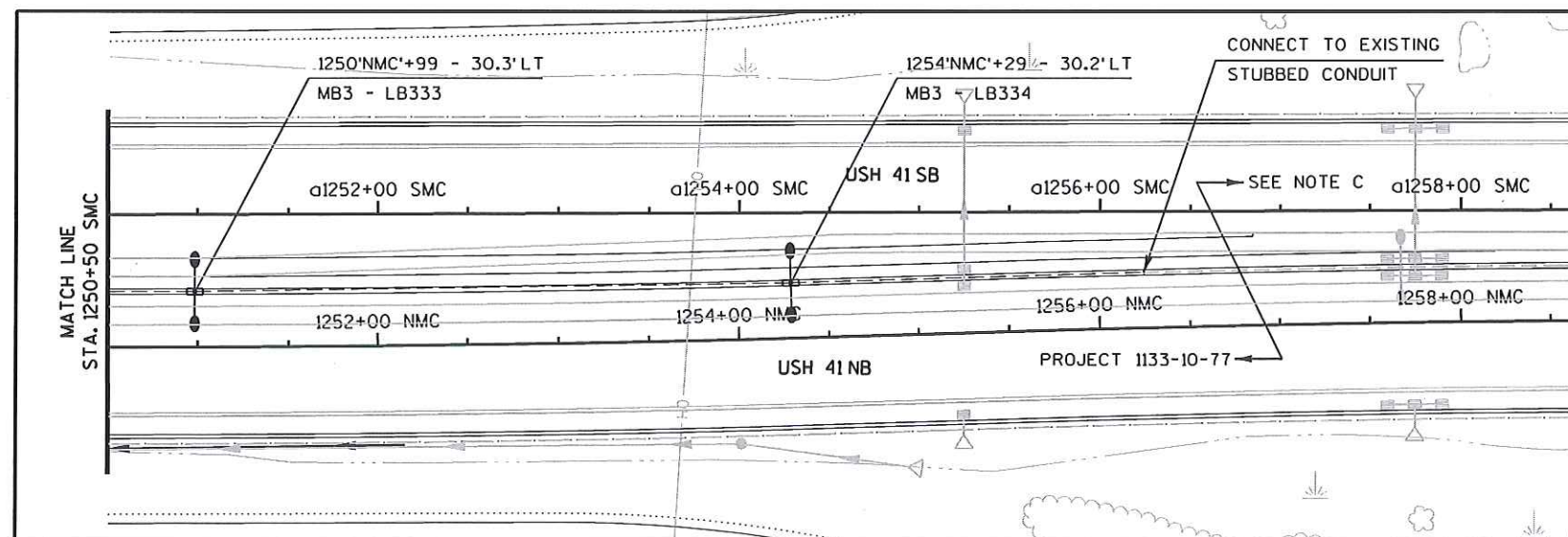
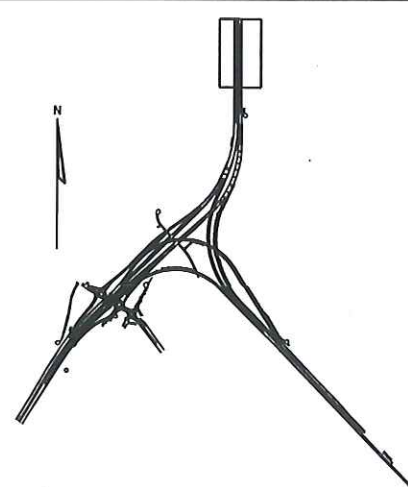
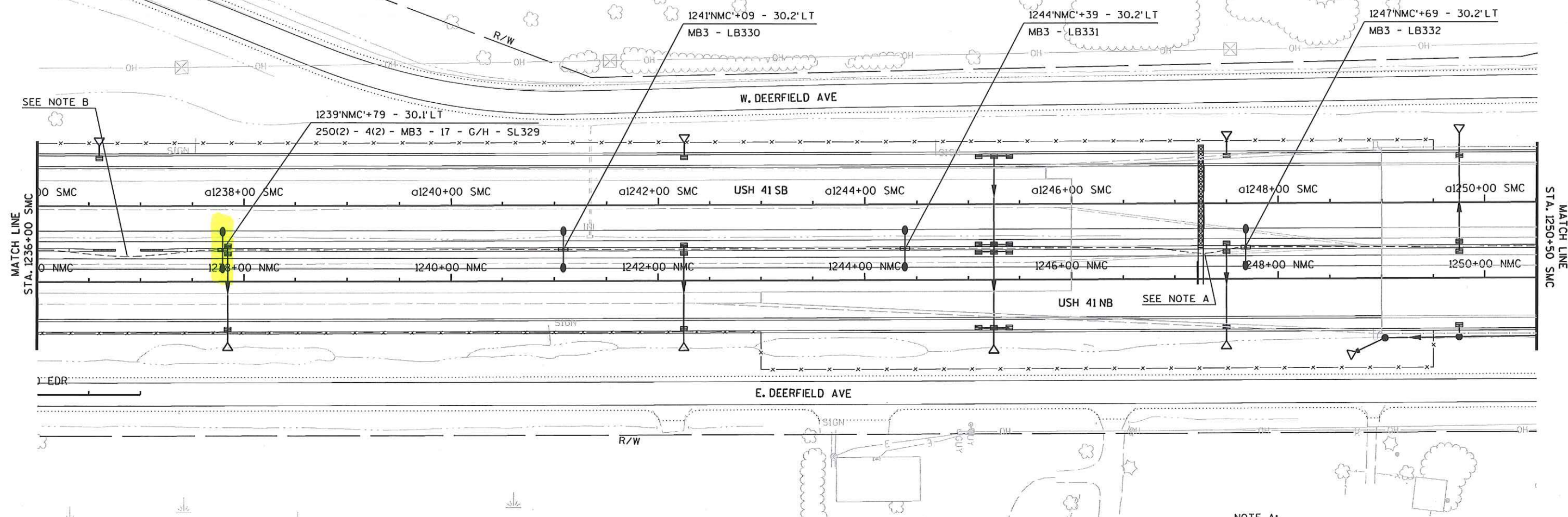




SHEET 50 OF 75

SHEET 5 OF 8





NOTE A:  
ROUTE CONDUIT AROUND SIGN FOOTING

NOTE B:  
ROUTE CONDUIT AROUND BARRIER FOOTING

NOTE C:  
REFER TO AS-BUILT PLANS FOR PROJECT ID 1133-10-81  
FOR EXISTING CONDUIT AND BASE LOCATIONS.

SHEET 52 OF 75

USH 41 & IH 43 SYSTEM INTERCHANGE  
NORTH LEG  
EAST DEERFIELD DRIVE CUL DE SAC - 480V  
VILLAGE OF HOWARD, BROWN COUNTY

LIGHTING NO. L05-0870

DESIGNER: KL ENGINEERING, INC.

DATE: 8-01-2014

SHEET 6 OF 8

PROJECT NO: 1133-10-77

HWY: USH 41

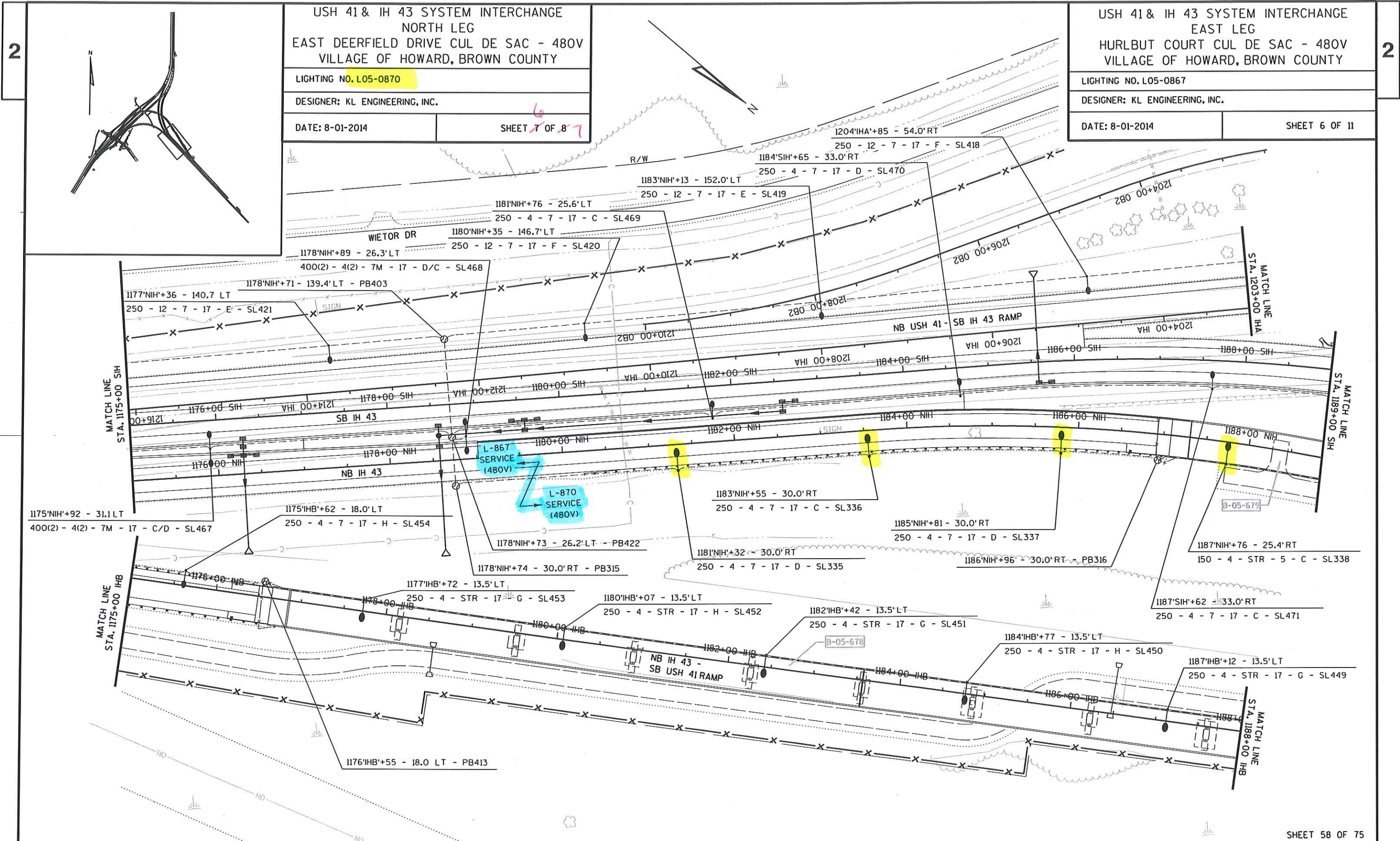
COUNTY: BROWN

LIGHTING PLANS

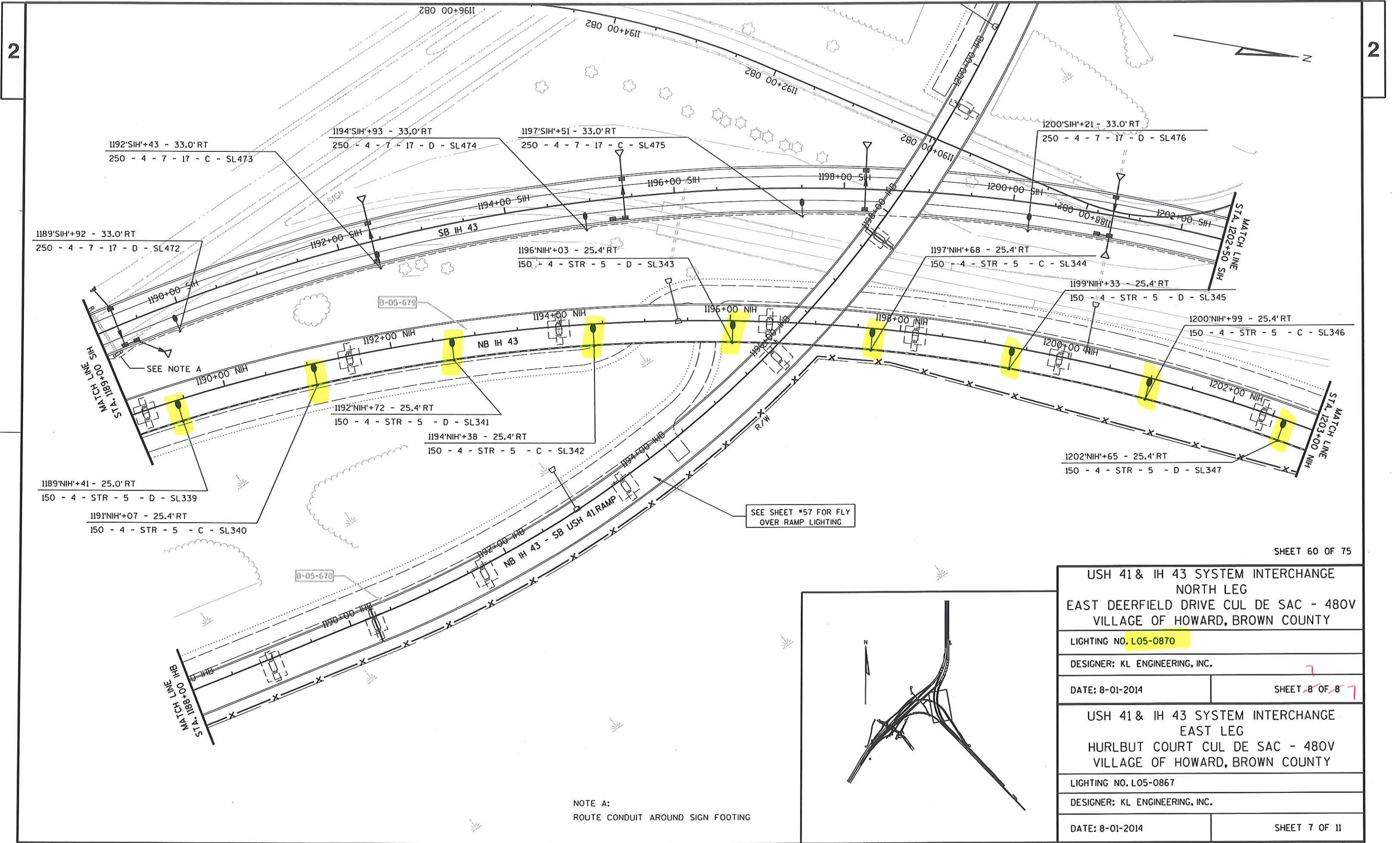
SHEET 566

E









SHEET 60 OF 75

USH 41 & IH 33 SYSTEM INTERCHANGE NORTH LEG EAST DEERFIELD DRIVE CUL DE SAC - 480V VILLAGE OF HOWARD, BROWN COUNTY	
LIGHTING NO. L05-0870	
DESIGNER: KL ENGINEERING, INC.	
DATE: 8-01-2014	SHEET 6 OF 8
USH 41 & IH 33 SYSTEM INTERCHANGE EAST LEG HURLBUT COURT CUL DE SAC - 480V VILLAGE OF HOWARD, BROWN COUNTY	
LIGHTING NO. L05-0867	
DESIGNER: KL ENGINEERING, INC.	
DATE: 8-01-2014	SHEET 7 OF 11

PROJECT NO: 1133-10-77

HWY: USH 41

COUNTY: BROWN

LIGHTING PLANS

SHEET

574

E



2

1

A/G - BLACK  
B/H - RED  
C/I - BLUE  
D/J - BROWN  
E - ORANGE  
F - YELLOW

480V PHASE TO PHASE

- L05-0850 / USH 41 & IH 43 System Interchange South Leg - Velp Avenue / Village of Howard / Brown County
- CB 200 / Northeast Quadrant of NB USH 41 Roundabout / Next to CB500 (240V)
- 240/480 Volt Single Phase / 200 Amp Service
- Main Lugs Only Meter Pedestal
- Circuit Descriptions
  - Ckt A/B - USH 41 Mainline from Velp Ave. to SB 41 Entrance Ramp & SB USH 41 Entrance Ramp
  - Ckt C/D - NB USH 41 Exit Ramp
  - Ckt E/F - SB USH 41 from Velp Ave. to Duck Creek
  - Ckt G/H - NB USH 41 from Velp Ave. to Beginning of R-05-258
  - Ckt I/J - NB USH 41 Entrance Ramp

2

A/G - BLACK  
B/H - RED  
C - BLUE  
D - BROWN  
E - ORANGE  
F - YELLOW

480V PHASE TO PHASE

- L05-0870 / USH 41 & IH 43 System Interchange North Leg - East Deerfield Culde Sac / Village of Howard / Brown County
- CB 300 / Southeast Quadrant of East Deerfield Culde Sac
- 240/480 Volt Single Phase / 200 Amp Service
- Main Lugs Only Meter Pedestal / Shared Power Source with ITS
- Circuit Descriptions
  - Ckt A/B - SB USH 41 from East Deerfield Culde Sac to end of B-05-682 & NB USH 41 from East Deerfield Culde Sac to end of B-05-681
  - Ckt C/D - NB IH 43 - NB USH 41 from East Deerfield Culde Sac to Beginning of Flyover
  - Ckt E/F - SB USH 41 Exit Ramp from East Deerfield Culde Sac to Velp Ave.
  - Ckt G/H - USH 41 Mainline from East Deerfield Culde Sac to North Project Limits

3

A/G - BLACK  
B/H - RED  
C - BLUE  
D - BROWN  
E - ORANGE  
F - YELLOW

480V PHASE TO PHASE

- L05-0867 / USH 41 & IH 43 System Interchange East Leg - Hurlbut Court Culde Sac / Village of Howard / Brown County
- CB 400 / Northeast Quadrant of Hurlbut Court Culde Sac
- 240/480 Volt Single Phase / 200 Amp Service
- Main Lugs Only Meter Pedestal
- Circuit Descriptions
  - Ckt A/B - IH 43 Mainline from Hurlbut Court Culde Sac to South Project Limits
  - Ckt C/D - SB USH 41 - SB IH 43 from Hurlbut Court Culde Sac to End of Ramp
  - Ckt E/F - NB USH 41 - SB IH 43 from Hurlbut Court Culde Sac to End of Flyover
  - Ckt G/H - NB IH 43 - SB USH 41 from Hurlbut Court Culde Sac to End of Flyover

4

A - BLACK  
B - RED  
C - BLUE  
D - BROWN  
E - ORANGE  
F - YELLOW

480V PHASE TO PHASE

- L-866 / USH 41 & STH 29 Interchange / USH 41 Mainline, Shawano Ave. - Lane Grove Ave. / Village of Howard / Brown County
- EXCB 200 / Southwest Quadrant of Memorial Drive and Vincent Road Intersection
- 240/480 Volt Single Phase / 200 Amp Service
- Main Lugs Only Meter Pedestal
- Circuit Descriptions
  - Ckt A/B - USH 41 Mainline from Box Culvert to SB 41 Entrance Ramp from Velp Ave.
  - Ckt C/D - USH 41 NB C-D Roadway from Memorial Drive to EN Flyover
  - Ckt E/F - USH 41 SB C-D Roadway from Memorial Drive to SW System Ramp

1

A - BLACK  
B - RED  
C - BLUE  
D - BROWN

240V PHASE TO PHASE

- L0826 / USH 41 & Velp Avenue Interchange - Roundabout Lighting / Village of Howard / Brown County
- CB 500 / Northeast Quadrant of NB USH 41 Roundabout / Next to CB200 (480V)
- 120/240 Volt Single Phase / 200 Amp Service
- Meter Breaker Pedestal / Shared Power Source with ITS
- Circuit Descriptions
  - Ckt A/B - North Side of NB and SB Roundabout / R-05-235 Underdeck
  - Ckt C/D - South Side of NB and SB Roundabout / R-05-234 Underdeck

WISDOT SYSTEMS

1

A - BLACK  
B - RED  
C - BLUE  
D - BROWN

240V PHASE TO PHASE

E - BLUE  
F - BROWN  
G - BLACK  
H - RED

120V PHASE TO PHASE

- CB 600 / Memorial Drive Roundabout Lighting
- 120/240 Volt Single Phase / 200 Amp Service
- Electrical Service Meter Breaker Pedestal Special
- Village of Howard / Brown County
- Circuit Descriptions
  - Ckt A/B - Street Lights (240V) North and East Sides of Roundabout
  - Ckt C/D - Street Lights (240V) South and West Sides of Roundabout
  - Ckt E/F - Receptacles (120V) North and East Sides of Roundabout
  - Ckt G/H - Receptacles (120V) South and West Sides of Roundabout

NON-WISDOT SYSTEMS

PROJECT NO: 1133-03-75/77

HWY: USH 41

COUNTY: BROWN

LIGHTING PLAN OVERVIEW

SHEET

551

E

FILE NAME : G:\WDTN\WNE30-0739\BROWN COUNTY - 02\1133-10-77 (USH 41 - IH 43 - VELP)\DGN\PLAN SHEETS\023500-LIGHTING OVERVIEW.dgn

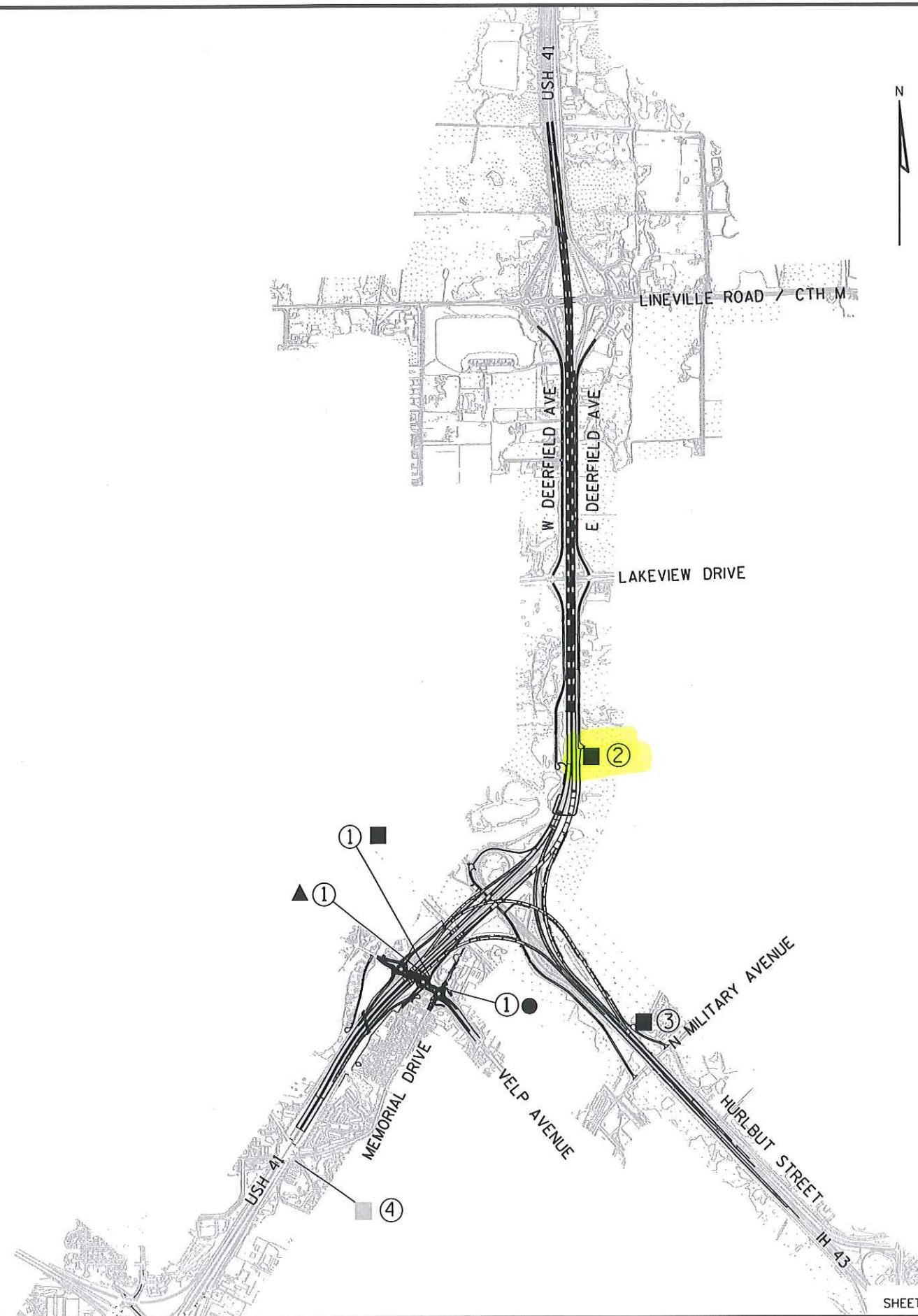
PLOT DATE : 12/15/2014

PLOT BY : KL Engineering

PLOT NAME :

PLOT SCALE :

WISDOT/CADDs SHEET 42



SHEET 37 OF 75