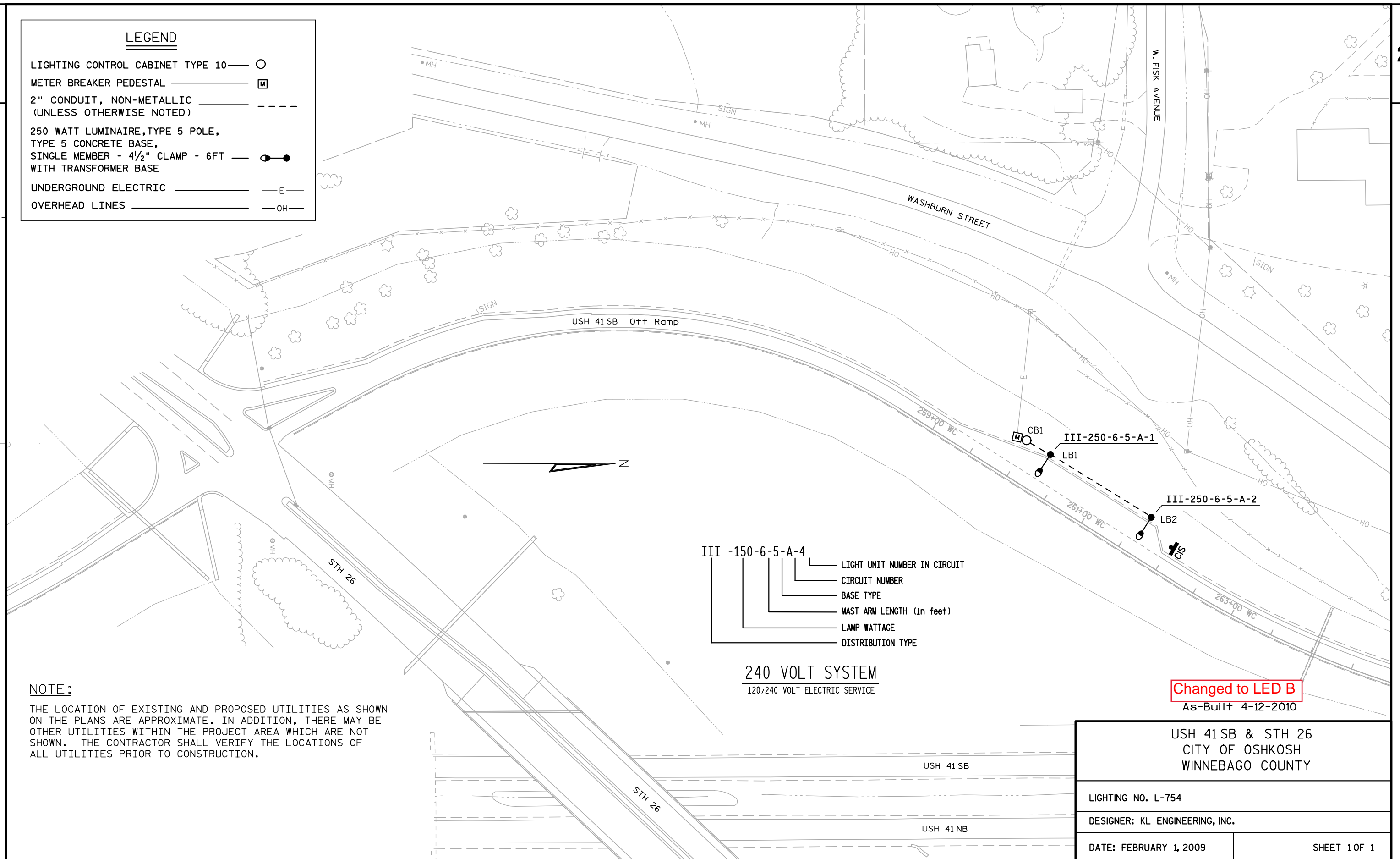


LEGEND

LIGHTING CONTROL CABINET TYPE 10 — ○
METER BREAKER PEDESTAL — ■
2" CONDUIT, NON-METALLIC
(UNLESS OTHERWISE NOTED) — - - -
250 WATT LUMINAIRE, TYPE 5 POLE,
TYPE 5 CONCRETE BASE,
SINGLE MEMBER - 4½" CLAMP - 6FT — ●—●
WITH TRANSFORMER BASE
UNDERGROUND ELECTRIC — —E—
OVERHEAD LINES — —OH—

**NOTE:**

THE LOCATION OF EXISTING AND PROPOSED UTILITIES AS SHOWN ON THE PLANS ARE APPROXIMATE. IN ADDITION, THERE MAY BE OTHER UTILITIES WITHIN THE PROJECT AREA WHICH ARE NOT SHOWN. THE CONTRACTOR SHALL VERIFY THE LOCATIONS OF ALL UTILITIES PRIOR TO CONSTRUCTION.

240 VOLT SYSTEM
120/240 VOLT ELECTRIC SERVICE

Changed to LED B
As-Built 4-12-2010

USH 41 SB & STH 26
CITY OF OSHKOSH
WINNEBAGO COUNTY

LIGHTING NO. L-754

DESIGNER: KL ENGINEERING, INC.

DATE: FEBRUARY 1, 2009

SHEET 1 OF 1

PROJECT NO: 1120-10-76

HWY: USH 41

COUNTY: WINNEBAGO

CRASH INVESTIGATION SITE LIGHTING PLAN

SHEET

E