

III -250- 8-7-A-1

- LIGHT UNIT NUMBER IN CIRCUIT
- CIRCUIT NUMBER
- BASE TYPE
- MAST ARM LENGTH (In feet)
- LAMP WATTAGE
- DISTRIBUTION TYPE

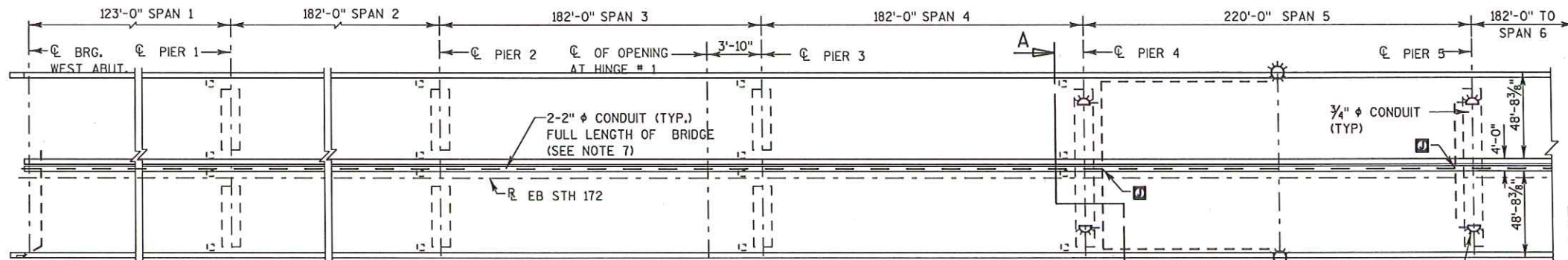
480 VOLT SYSTEM
240/480 VOLT ELECTRIC SERVICE

AS-BUILT 9-22-2010

- LEGEND**
- TYPE 7 LIGHT POLE (35'10") (Milwaukee Style) W/TRANSFORMER BASE, SINGLE MEMBER 8' ARMS (LB18 - LB28)
 - ⊠ CONCRETE CONTROL CABINET BASES TYPE 9
 - ⊙ PULL BOXES STEEL ⊞ METER BREAKER PEDESTAL/DISCONNECT
 - A 2" PVC SCHEDULE 40 CONDUIT W/2 #6 AWG, W/2 #8 AWG, W/2 #10 AWG, (600V, TYPE RHH/RHW/EPR) & 1 #8 AWG, 1#10 AWG GROUND (600V, TYPE XHHW)
 - B 2" PVC SCHEDULE 40 CONDUIT W/2 #6 AWG, W/2 #8 AWG, (600V, TYPE RHH/RHW/EPR) & 1 #8 AWG GROUND (600V, TYPE XHHW)
 - C 2" PVC SCHEDULE 40 CONDUIT W/2 #6 AWG, W/2 #8 AWG, (600V, TYPE RHH/RHW/EPR) & 1 #8 AWG GROUND (600V, TYPE XHHW)
 - G 2" RTRC FIBERGLASS W/2 #6 AWG, W/2 #8 AWG, W/2 #10 AWG (600V, TYPE RHH/RHW/EPR) & 1 #8 AWG GROUND (600V, TYPE XHHW), SEE NOTE 9 ON PREVIOUS PAGE
 - H 2" RTRC FIBERGLASS W/2 #6 AWG, W/4 #8 AWG, W/2 #6 AWG (600V, TYPE RHH/RHW/EPR) & 1 #8 AWG GROUND (600V, TYPE XHHW), SEE NOTE 9 ON PREVIOUS PAGE
 - I 2" PVC SCHEDULE 40 BELOW GRADE, 1-NYLON PULLSTRING.
 - K 2" PVC CONDUIT W/4 #10 AWG (600V, TYPE RHH/RHW/EPR) & 1#10 AWG GROUND (600V, TYPE XHHW)
 - L 2" PVC SCHEDULE 40 W/ NYLON PULLSTRING
 - M 2" PVC CONDUIT W/2 #10 AWG (600V, TYPE RHH/RHW/EPR) & 1#10 AWG GROUND (600V, TYPE XHHW)

HIGHWAY LIGHTING
STH 172 EB TO STH 57
VILLAGE OF ALLOUEZ
BROWN COUNTY

LIGHTING NO. 315
DESIGNED BY: URS
DATE: 5-20-2008 SHEET 2 of 4



ESTIMATED NAVIGATION LIGHTING QUANTITIES

FIXTURES	UNIT	TOTAL
GREEN CENTER CHANNEL LIGHT LED, 360°	EACH	2
RED PIER LIGHT LED, 180°	EACH	4

NOTE:
DEFLECT BAR REINF. IN PARAPET TO CLEAR JUNCTION BOXES

LEGEND

1. 18"x12"x6" RAIN TIGHT JUNCTION BOX OF GALVANIZED STEEL & APPROX. WALL THICKNESS OF 1/2". UTILIZE STAINLESS STEEL HEX BOLTS & NEOPRENE GASKET BOSSES FOR CONDUIT ENTRANCES. APPROX. WEIGHT IS 10 LBS. BOX INSTALLED IN PARAPET WALLS AT PIERS 4&5 PAID FOR UNDER ELECT. PAY ITEM JUNCTION BOXES 18X12X6-INCH.

6"x6"x4" S.S. JUNCTION BOX, 3/4" Ø RTRC FIBERGLASS CONDUIT EXTENDS FROM JUNCTION BOX AT PIER 4 TO MIDSPAN (TYP.)

3/4" Ø RTRC FIBERGLASS CONDUIT (TYP.) ATTACHED TO PIER FACE

CONDUIT BODY TYPE 'T' (TYP.)

EXISTING 1" Ø CONDUIT (NOT TO BE USED)

6"x6"x4" S.S. JUNCTION BOX AT PIER (TYP.)

AT PIER 4
PIER 5 SIMILAR

PIER TYPE CHANNEL MARKED WITH 180° RED FRESNEL LENS. INSTALLED WITH LED BULBS.

VANDAL GUARDS

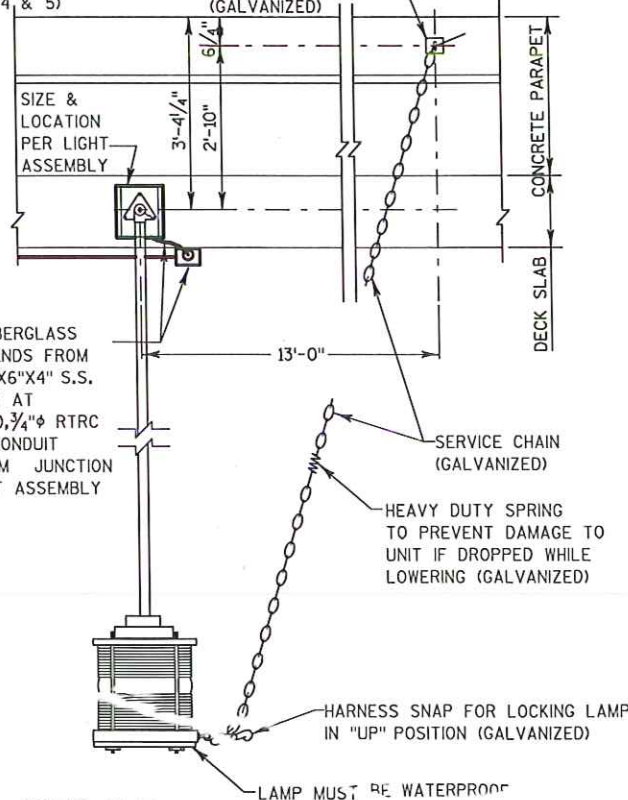
NORMAL LOW WATER
ELEV. 576.80

SECTION A-A PARTIAL CROSS SECTION OF RDWY.

SCALE 3/8"=1'-0"

LOCATION PLAN

AT MIDSPAN

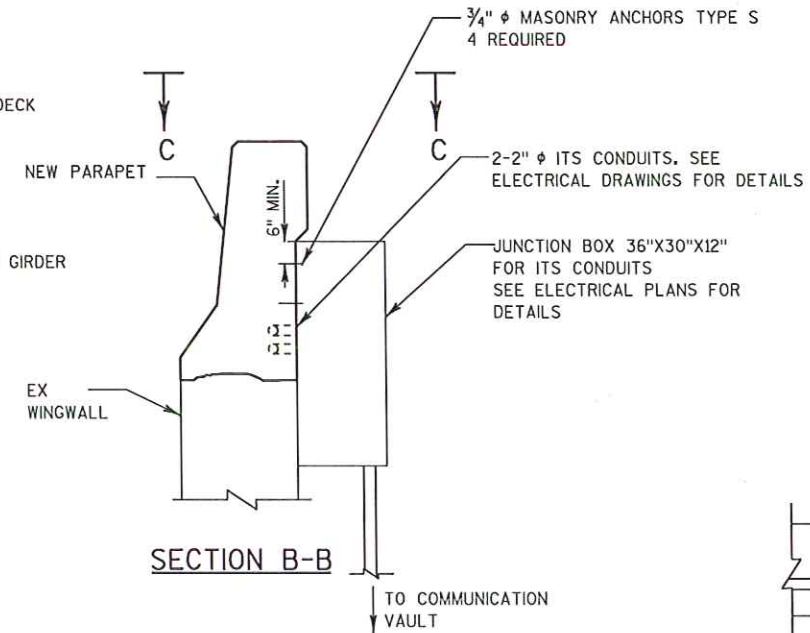
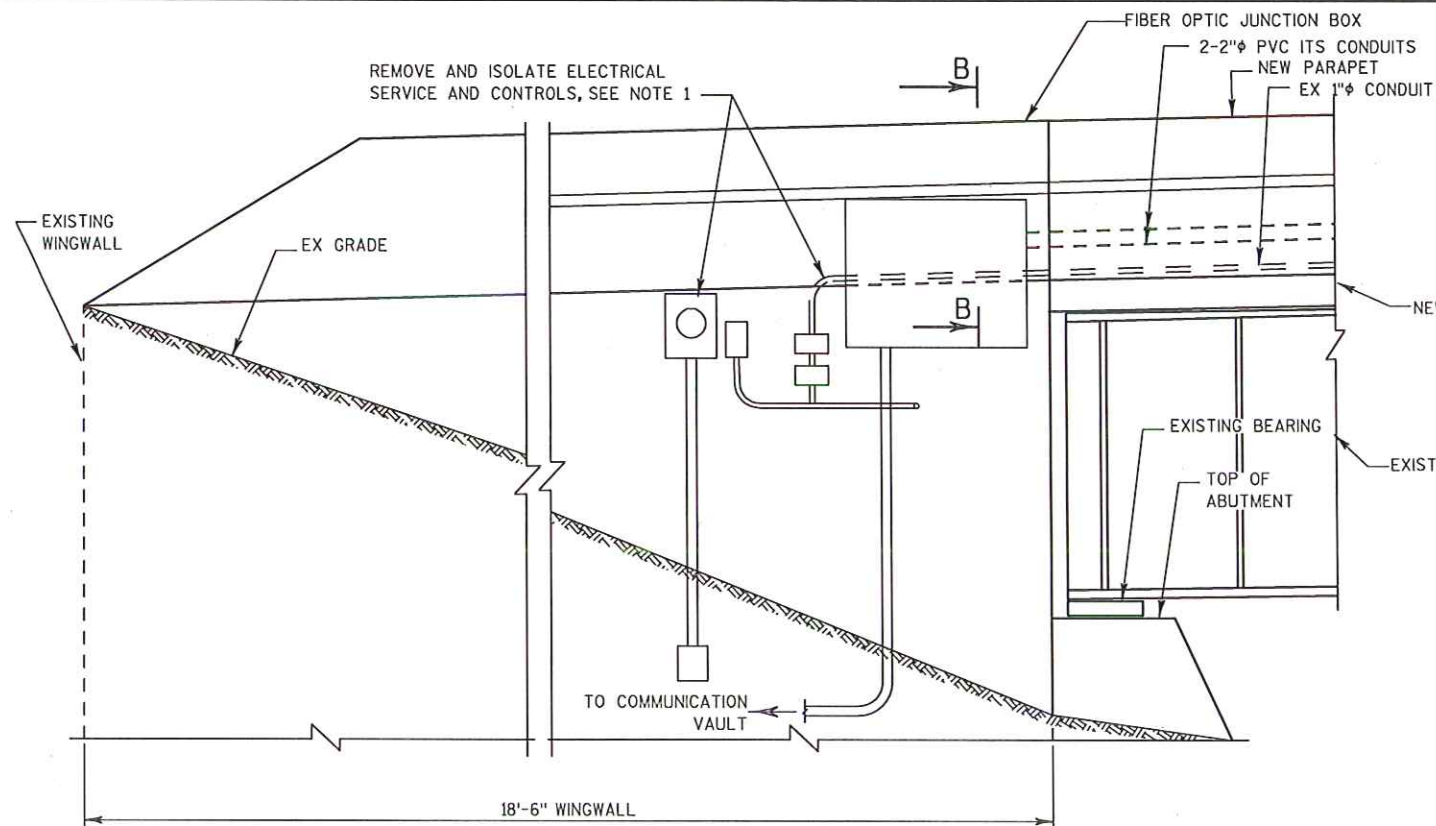


VIEW B-B SCALE 3/4"=1'-0"

NOTES:

- SEE BRIDGE PLANS FOR ADDITIONAL INFORMATION ON CONDUITS, WIRING, AND JUNCTION BOXES.
- INCLUDED IN NAVIGATIONAL LIGHT PAY ITEM, ALL LABOR, TOOLS, EQUIPMENT AND MATERIALS FROM PARAPET WALL JUNCTION BOXES UP TO AND INCLUDING THE LIGHTS. PARAPET JUNCTION BOXES AND WIRE FROM CONTROLLER TO PARAPET JUNCTION BOXES SHALL BE PAID FOR SEPARATELY.
- ALL CONDUIT SHALL BE RTRC FIBERGLASS ALL BOXES AND FITTINGS SHALL BE WATERTIGHT.
- NAV. LIGHT CIRCUITS SHALL BE 120 VAC. WIRING SHALL BE 12 AWG. MIN.
- NAV. LIGHT FIXTURES SHALL BE LED STYLE AND MUST COMPLY WITH U.S. COAST GUARD REGULATIONS.
- ALL WORK MUST CONFORM TO THE NATIONAL ELECTRIC CODE.
- ROADWAY LIGHTS NOT SHOWN FOR CLARITY. SEE ROADWAY LIGHTING PLAN.

SHEET 3 of 4



LEGEND

- JUNCTION BOX MOUNTED IN PARAPET 18X12X6
- ▲ CUT OUT ± 1" OF GASKET AT BOTTOM OF JUNCTION BOX COVER TO ALLOW FOR DRAINAGE
- ▽ LOCATION OF CONDUIT IS MEASURED FROM OUTSIDE EDGE OF JUNCTION BOX

NOTES:

1. PAY FOR REMOVAL UNDER NEW ELECTRICAL SERVICE. ITEM ELECTRICAL SERVICE METER BREAKER PEDESTAL.
2. SECURE CONDUITS TO ABUTMENT FACE AND BACKWALL USING MOUNTING DETAIL IN B-5-149 STRUCTURE PLAN.

