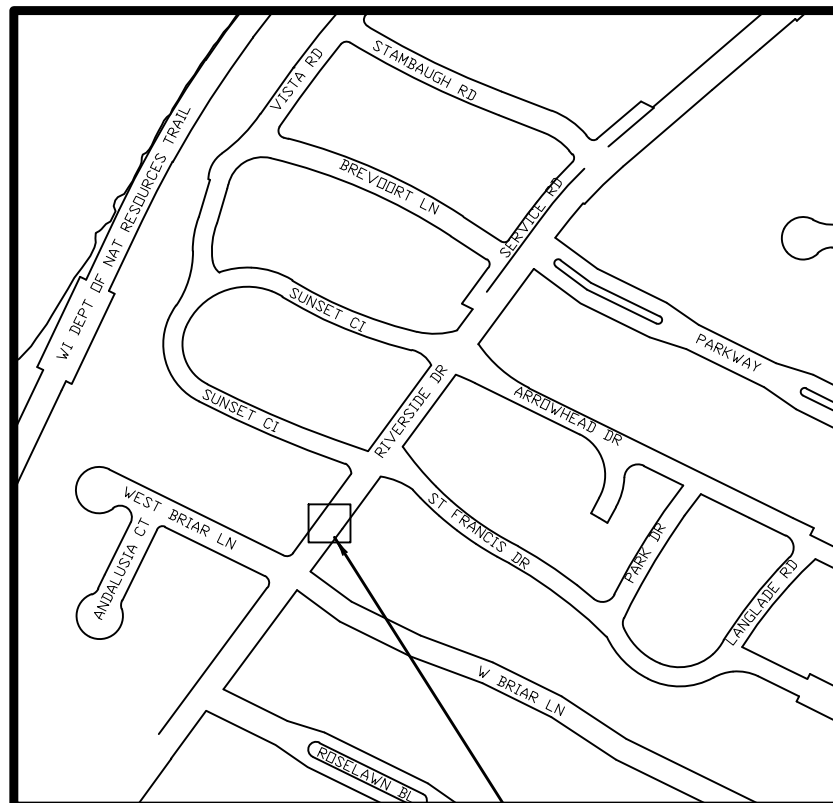
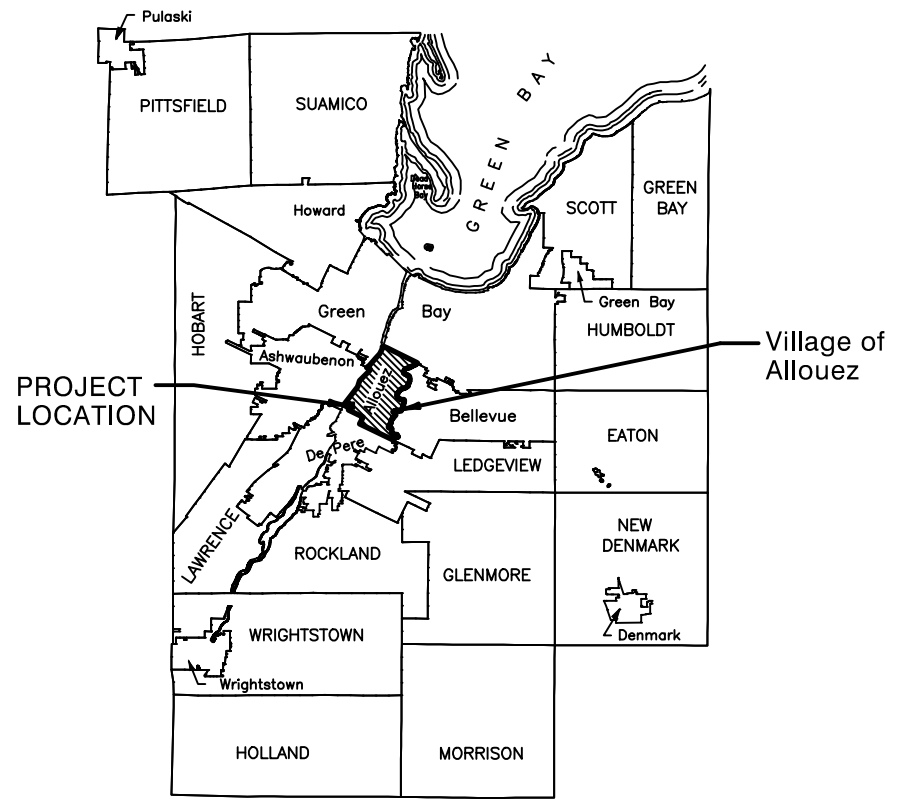
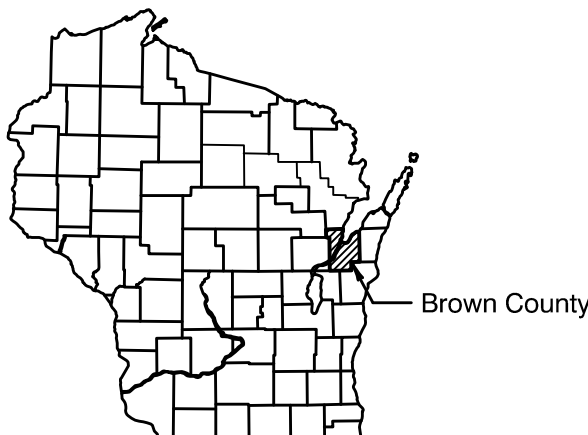


VILLAGE OF ALLOUEZ

BROWN COUNTY, WISCONSIN

PROJECT ID: 2017-02

RIVERSIDE PEDESTRIAN CROSSING



INDEX	
NO.	DESCRIPTION
1	TITLE SHEET
2	GENERAL NOTES AND TYPICAL SECTION
3	CONSTRUCTION DETAILS
4-6	TRAFFIC SIGNAL PLANS
7	PERMANENT SIGNING AND MARKING PLAN
8	TRAFFIC CONTROL
9	TRAFFIC CONTROL DETAILS

ACCEPTED FOR

\_\_\_\_\_ of \_\_\_\_\_

\_\_\_\_\_

(Date) (Signature & Title of Official)

ORIGINAL PLANS PREPARED BY

\_\_\_\_\_

(Date) (Signature)

COORDINATES ON THIS PLAN ARE REFERENCED TO THE WISCONSIN COUNTY COORDINATE SYSTEM (WCCS), BROWN COUNTY VERTICAL DATUM NAVD88 (1991)

Mead & Hunt

Mead & Hunt, Inc.  
1345B North Road  
Green Bay, WI 54313  
phone: 920-496-0500  
meadhunt.com

VILLAGE OF ALLOUEZ

TITLE SHEET

REVISION

08/10/16 - REVISED

08/18/16 - REVISED

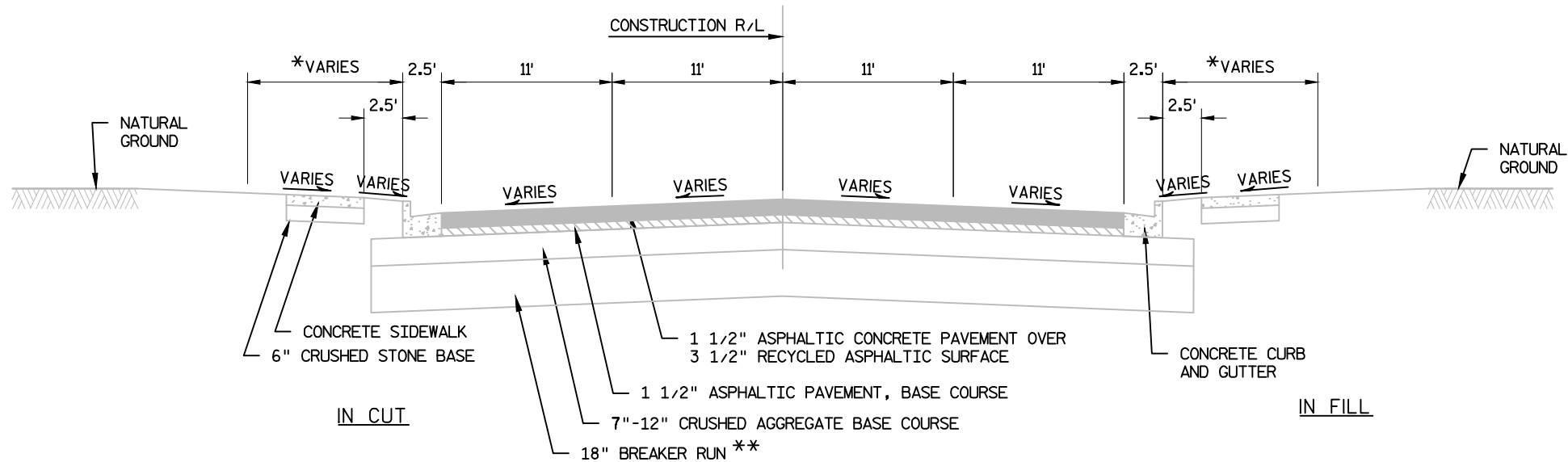
PRELIMINARY  
NOT FOR CONSTRUCTION

M&H NO.: 0120500-161767.01  
DATE: 12/2016  
DESIGNED BY: CMR  
DRAWN BY: RMS  
CHECKED BY: CMR  
DO NOT SCALE DRAWINGS

SHEET NO.

1

X:\0120500\161767.01\TECHCAD\ALLOUEZ\_2017-02\SHEETS\PLAN\01-02 ALLOUEZ TC.DWG  
9/5/2017 1:48:30 PM



EXISTING TYPICAL SECTION STH 57/RIVERSIDE DRIVE  
STA 14+97 TO STA 73+06

ABUT	ABUTMENT	FL or F/L	FLOW LINE	RR	RAILROAD
AC	ACRE	Flow Line	FOOT	R	RANGE
AGG	AGGREGATE	FT	FOOTING	RECY	RECYCLED
AH	AHEAD	FTG	FOUNDATION	RL or R/L	REFERENCE LINE
ET AL	AND OTHERS	FDN	GARAGE	RP	REFERENCE POINT
ASPH	ASPHALTIC	G	GRID NORTH	RCCP	REINFORCED CONCRETE CULVERT PIPE
APM	ASPHALTIC PLANT MIX	GN	HECTARE	RCHECP	REINFORCED CONCRETE HORIZONTAL ELLIPTICAL CULVERT PIPE
AVG	AVERAGE	ha	HEIGHT	RCPA	REINFORCED CONCRETE PIPE ARCH
AADT	ANNUAL AVERAGE DAILY TRAFFIC	HT	HIGH EARLY STRENGTH	RCPCP	REINFORCED CONCRETE PIPE CATTLE PASS
BK	BACK	HES	HOUSE	RCPSS	REINFORCED CONCRETE PIPE STORM SEWER
BF	BACK FACE	H	HUNDREDWEIGHT	REBAR	REINFORCEMENT BAR
BL or B/L	BASE LINE	CWT	HYDRANT	REINF	REINFORCING OR REINFORCEMENT
BM	BENCH MARK	HYD	INVERT	REQD	REQUIRED
BLK	BLOCK	INV	IRON PIPE OR PIN	RW	RETAINING WALL
C	CELSIUS	IP	JOINT	RT	RIGHT
CB	CATCH BASIN	JT	JUNCTION	RHF	RIGHT-HAND FORWARD
CL or C/L	CENTER LINE	JCT	JUNCTION BOX	R/W	RIGHT-OF-WAY
CC	CENTER TO CENTER	JB#	LEFT	RD	ROAD
CH	CHORD	LT	LEFT-HAND FORWARD	RDWY	ROADWAY
CH BRG	CHORD BEARING	LHF	LENGTH OF CURVE	SALV	SALVAGED
CE	COMMERCIAL ENTRANCE	L	LINEAR FOOT	SAN S	SANITARY SEWER
CONC	CONCRETE	LIN FT or LF	LUMP SUM	SEC	SECTION
CORR	CORRUGATED	LS	MANAGER	SHLDR	SHOULDER
CACP	CORRUGATED ALUMINUM CULVERT PIPE	MGR	SIGNAL BASE	SW	SIDEWALK
CAPA	CORRUGATED ALUMINUM PIPE ARCH	SB#	SOUTH	SPECS	SPECIFICATIONS
CSCP	CORRUGATED STEEL CULVERT PIPE	S	SOUTHBOUND	SQ	SQUARE
CSPA	CORRUGATED STEEL PIPE ARCH	SB	SPECIAL	SF or SQ FT	SQUARE FEET
CSPCP	CORRUGATED STEEL PIPE CATTLE PASS	SP	MATERIAL	SY or SQ YD	SQUARE YARD
CO	COUNTY	MATL	MESSAGE BOARD	STD	STANDARD
CTH	COUNTY TRUNK HIGHWAY	MB	NOMINAL	SDD	STANDARD DETAIL DRAWINGS
CABC	CRUSHED AGGREGATE BASE COURSE	NOM	NON REINFORCED CONCRETE PIPE STORM	STH	STATE TRUNK HIGHWAYS
CY or CUYD	CUBIC YARD	NRCPS	SEWER	STA	STATION
CULT	CULTIVATED	NC	NORMAL CROWN	SS	STORM SEWER
CULV	CULVERT	N	N	TEL	TELEPHONE
D	DEGREE OF CURVE	Y	NORTH GRID COORDINATE	TEMP	TEMPORARY
DHV	DESIGN HOUR VOLUME	NB	NORTHBOUND	TLE	TEMPORARY LIMITED EASEMENT
DIA	DIAMETER	NO	NUMBER	TPM	TEMPORARY PAVEMENT MARKING
DISCH	DISCHARGE	OBLIT	OBLITERATE	TPMRT	TEMPORARY PAVEMENT MARKING REMOVABLE TAPE
DOC	DOCUMENT	OL	OUT LOT	TYP	TYPICAL
DWY	DRIVEWAY	SE	SUPERELEVATION	UG	UNDERGROUND
E	EAST	SURF	SURFACE	USH	UNITED STATES HIGHWAY
X	EAST GRID COORDINATE	SL or S/L	SURVEY LINE	VAR	VARIABLE
EB	EASTBOUND	B	PEDESTRIAN PUSH BUTTON	V	VELOCITY OR DESIGN SPEED
ELEC	ELECTRIC (AL)	PERM	PERMANENT	VERT	VERTICAL
EL or ELEV	ELEVATION	PLE	PERMANENT LIMITED EASEMENT	VC	VERTICAL CURVE
EMB	EMBANKMENT	Tile	TILE	VPCC	VERTICAL POINT OF COMPOUND
ENT	ENTRANCE	PT	POINT	VPC	VERTICAL POINT OF CURVE
EXC	EXCAVATION	PCC	POINT OF COMPOUND CURVE	VPI	VERTICAL POINT OF INTERSECTION
EBS	EXCAVATION BELOW SUBGRADE	PC	POINT OF CURVATURE	VPRC	VERTICAL POINT OF REVERSE CURVE
EX or EXIST	EXISTING	PI	POINT OF INTERSECTION	VPT	VERTICAL POINT OF TANGENCY
Discharge	OD	PRC	POINT OF REVERSE CURVATURE	VIT	VITRIFIED
District	PSD	PT	POINT OF TANGENCY	VOL	VOLUME
Ditch Grade	PAVT	POC	POINT OF TANGENCY	W	WATER
FERT	FERTILIZE	POT	POINT ON TANGENT	WM	WATER MAIN
FE	FIELD ENTRANCE	PVC	POLYVINYL CHLORIDE	WV	WATER VALVE
FG	FINISH GRADE	PCC	PORTLAND CEMENT CONCRETE	W	WEST
FAB	FLASHING ARROW BOARD	PSI	POUNDS PER SQUARE INCH	WB	WESTBOUND
		PE	PRIVATE ENTRANCE	YD	YARD
		PROJ	PROJECT		
		PL	PROPERTY LINE		
		PB#	PULL BOX		
		R	RADIUS		

GENERAL NOTES:

1. THE UTILITIES SHOWN IN PLAN AND PROFILE ARE INDICATED IN ACCORDANCE WITH AVAILABLE RECORDS. THE CONTRACTOR SHALL BE RESPONSIBLE FOR OBTAINING EXACT LOCATIONS AND ELEVATIONS OF ALL UTILITIES, INCLUDING ANY PRIVATE UTILITIES, FROM THE OWNERS OF THE RESPECTIVE UTILITIES. ALL UTILITIES SHALL BE NOTIFIED 72 HOURS PRIOR TO EXCAVATION.
2. EXISTING STREET RIGHT-OF-WAY AND INTERSECTING PROPERTY LINES ARE ESTABLISHED FROM FIELD LOCATED SURVEY MONUMENTATION, PREVIOUS SURVEYS, PLATS, AND CURRENT PROPERTY DEEDS.
3. NO TREES OR SHRUBS ARE TO BE REMOVED WITHOUT PRIOR APPROVAL OF THE ENGINEER. REFER TO SPECIAL PROVISION FOR INFORMATION PERTAINING TO ROADSIDE CLEARING.
4. A SAWED JOINT IS REQUIRED WHERE NEW ASPHALTIC SURFACE MATCHES EXISTING ASPHALTIC CONCRETE SURFACE.
5. ALL DISTURBED AREAS NOT OTHERWISE SURFACED SHALL BE RESTORED WITH TOPSOIL, FERTILIZER, SEED, MULCH, OR EMAT.
6. CURB RAMP DETECTABLE WARNING FIELDS ARE REQUIRED AT ALL CURB RAMP LOCATIONS.

**Mead & Hunt**  
Mead & Hunt, Inc.  
1345B North Road  
Green Bay, WI 54313  
phone: 920-496-0500  
meadhunt.com

These documents shall not be used for any purpose or project for which it is not intended. Mead & Hunt shall be indemnified by the client and held harmless from all claims, damages, liabilities, losses, and expenses, including attorneys' fees and costs, arising out of such misuse or reuse of the documents. In addition, unauthorized reproduction of these documents, in part or as a whole, is prohibited.

VILLAGE OF ALLOUEZ  
GENERAL NOTES AND TYPICAL SECTIONS  
----

REVISION

PRELIMINARY  
NOT FOR CONSTRUCTION

M&H NO.: 0120500-161767.01  
DATE: 12/2016  
DESIGNED BY: CMR  
DRAWN BY: RMS  
CHECKED BY: CMR  
DO NOT SCALE DRAWINGS

SHEET NO.

**DIGGERSHOTLINE**

Dial 811 or (800)242-8511

www.DiggersHotline.com

THE LOCATIONS OF THE EXISTING UTILITY INSTALLATIONS AS SHOWN ON THE PLANS ARE APPROXIMATE. THERE MAY BE OTHER UNDERGROUND UTILITY INSTALLATIONS WITHIN THE PROJECT AREA THAT ARE NOT SHOWN.



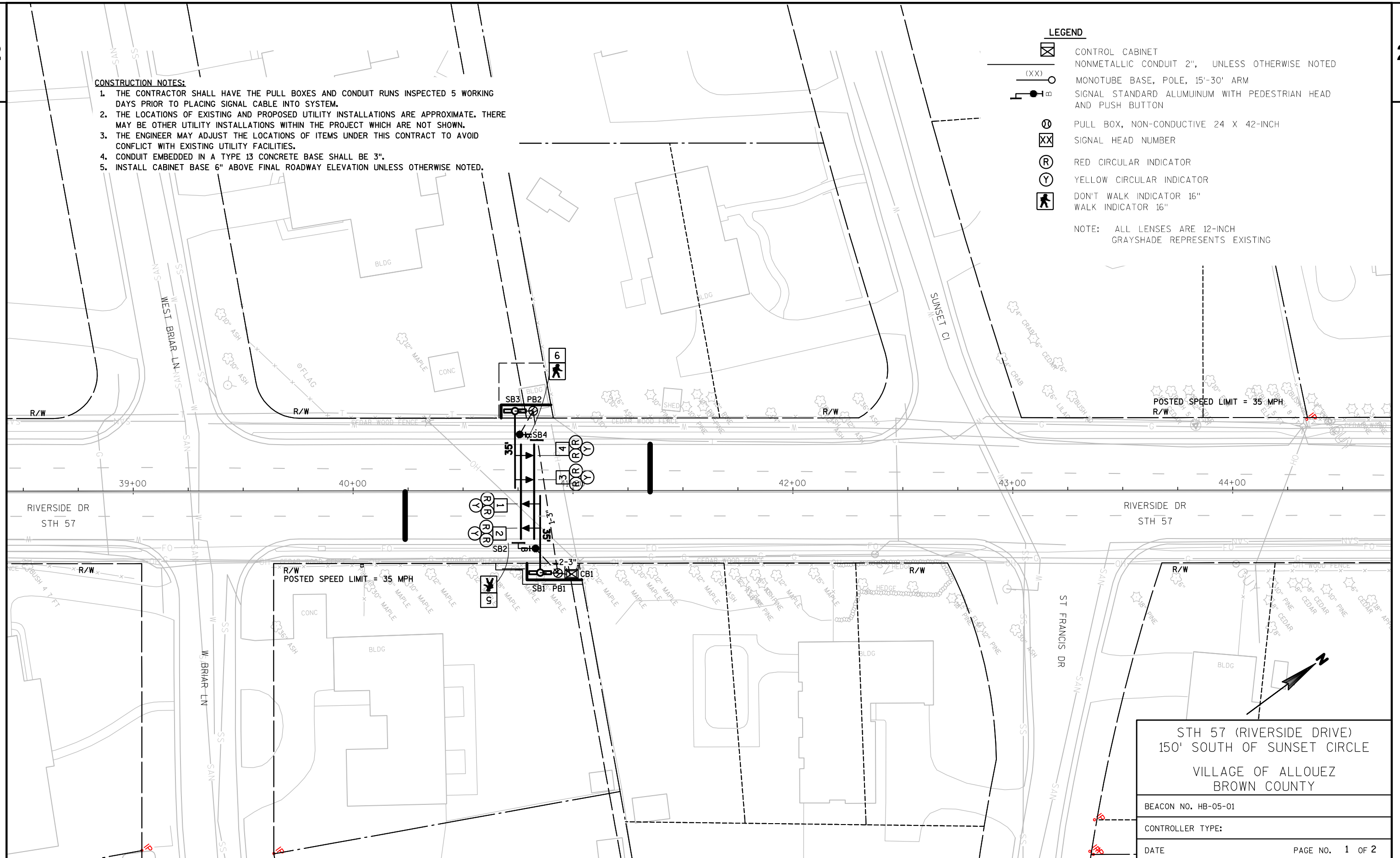
**CONSTRUCTION NOTES:**

1. THE CONTRACTOR SHALL HAVE THE PULL BOXES AND CONDUIT RUNS INSPECTED 5 WORKING DAYS PRIOR TO PLACING SIGNAL CABLE INTO SYSTEM.
2. THE LOCATIONS OF EXISTING AND PROPOSED UTILITY INSTALLATIONS ARE APPROXIMATE. THERE MAY BE OTHER UTILITY INSTALLATIONS WITHIN THE PROJECT WHICH ARE NOT SHOWN.
3. THE ENGINEER MAY ADJUST THE LOCATIONS OF ITEMS UNDER THIS CONTRACT TO AVOID CONFLICT WITH EXISTING UTILITY FACILITIES.
4. CONDUIT EMBEDDED IN A TYPE 13 CONCRETE BASE SHALL BE 3".
5. INSTALL CABINET BASE 6" ABOVE FINAL ROADWAY ELEVATION UNLESS OTHERWISE NOTED.

**LEGEND**

- ☒ CONTROL CABINET  
NONMETALLIC CONDUIT 2", UNLESS OTHERWISE NOTED
- (XX) ○ MONOTUBE BASE, POLE, 15'-30' ARM
- SIGNAL STANDARD ALUMINUM WITH PEDESTRIAN HEAD AND PUSH BUTTON
- ⊗ PULL BOX, NON-CONDUCTIVE 24 X 42-INCH
- ⊗ XX SIGNAL HEAD NUMBER
- Ⓡ RED CIRCULAR INDICATOR
- Ⓢ YELLOW CIRCULAR INDICATOR
- Ⓢ DON'T WALK INDICATOR 16"  
WALK INDICATOR 16"

NOTE: ALL LENSES ARE 12-INCH  
GRAYSHADE REPRESENTS EXISTING



STH 57 (RIVERSIDE DRIVE)  
150' SOUTH OF SUNSET CIRCLE  
VILLAGE OF ALLOUEZ  
BROWN COUNTY

BEACON NO. HB-05-01

CONTROLLER TYPE:

DATE

PAGE NO. 1 OF 2

PROJECT NO: 2017-02

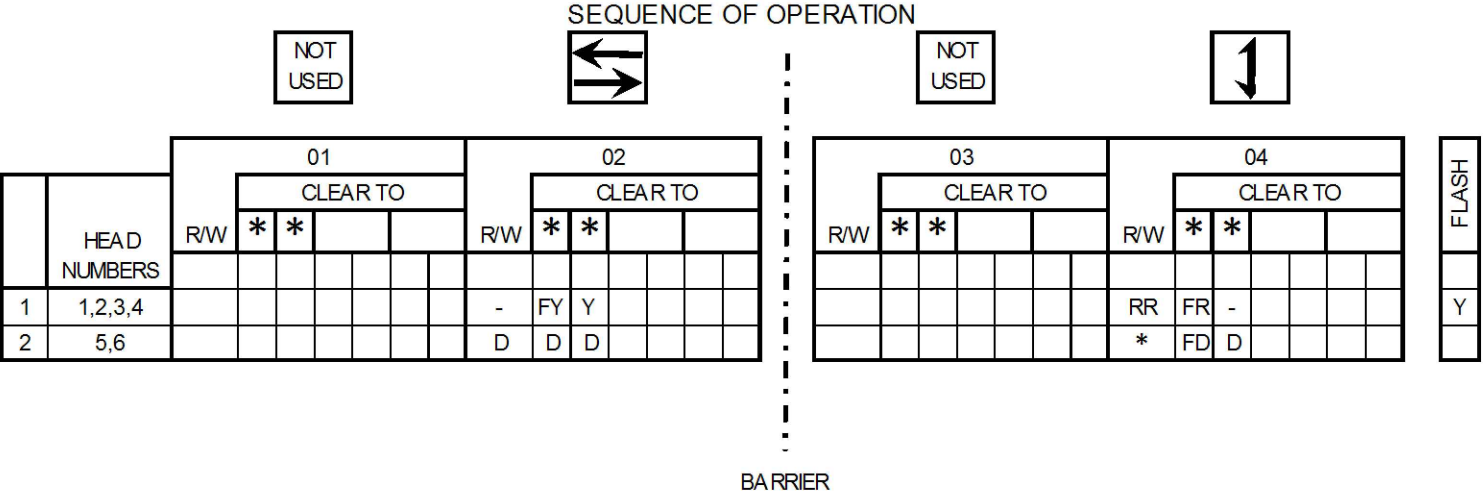
HWY: STH 57

COUNTY: BROWN

TRAFFIC SIGNAL PLAN

SHEET

E



RING 1

- = DARK SIGNAL
- FY = FLASHING YELLOW
- Y = STEADY YELLOW
- RR = STEADY RED
- FR = FLASHING RED
- D = DONT WALK
- FD = FLASHING DONT WALK

CHART 1

PHASE ON	NONCONFLICTING PHASE ALLOWED TO TIME CONCURRENTLY	PHASES IN CONFLICT WITH PAHSE ON
2	NONE	4
4	NONE	2

CONTROLLER LOGIC

PHASE NUMBER	PHASE RECALL	PHASE ACTIVE
2	M I N .	X
4		X

TY PE OF LIGHTING

NONE	
IN TRAFFIC CONTROL CABINET	
IN SEPARATE CONTROL CABINET	
BY OTHER AGENCY	X

TY PE OF INTERCONNECT COMMUNICATION

NONE	X
TBC	
CLOSED LOOP TWISTED PAIR *	
CLOSED LOOP FIBER OPTIC*	
FIBER OPTIC (ETHERNET)	
RADIO	
NO: S-	
SIGNAL SY STEM #: SS- -	

- \*\* CLEARANCE TO A PHASE IN CLONFLICT WITH THIS PHASE ON (SEE CHART 1)
- \* WHEN CALLED, TIMED STEADY WALK, THEN FLASHING DONT WALK, THEN GOES TO STEADY DONT WALK

STH 57 (RIVERSIDE DRIVE)  
150' SOUTH OF SUNSET CIRCLE  
  
VILLAGE OF ALLOUEZ  
BROWN COUNTY

BEACON NO. HB-05-01

CONTROLLER TYPE:

DATE

PAGE NO. 2 OF 2

X:\0120500\161767.01\TECHCAD\ALLOUEZ\_2017-02\SHEETSP\LAN\06\_TC SIGNAL ALLOUEZ.DWG  
9/5/2017 1:50:29 PM

CB1 TO	NO. OF CONDUCTORS	HEAD NO.	SIGNAL INDICATOR WIRE COLOR								WALK INDICATOR WIRE COLOR				OTHER
			RED	RED1	GREEN	<RED>	<YELLOW>	<GREEN>	FLASHING <YELLOW>	NEUTRAL	DWALK	WALK	BUTTON	NEUTRAL	
SB1	12	1	RED	ORG	GRN					WHT					
		2	RED	ORG	GRN					WHT					
SB2	7	5									RED	GRN		WHT	
		B											ORG/BLK	WHT/BLK	
SB3	12	3	RED	ORG	GRN					WHT					
		4	RED	ORG	GRN					WHT					
SB4	7	6									RED	GRN		WHT	
		B											ORGBLK	WHT/BLK	

NOTES: USE WHITE CONDUCTOR IN SIGNAL CABLE AS THE GROUNDED CONDUCTOR FOR ALL TRAFFIC SIGNAL INDICATIONS  
ENSURE THE GROUNDED CONDUCTOR IN THE FEEDER CABLE AND THE POLE CABLES ARE BOTH 18" LONGER THAN THE UNGROUNDED CONDUCTORS.  
AT THE SIGNAL BASES, CONNECT THE TERMINAL FROM THE PEDESTRIAN PUSH BUTTONS TO THE COLOR INDICATED IN THE CHART. CONNECT THE OTHER  
TERMINAL TO THE GROUND CONDUCTOR.

EQUIPMENT GROUNDING CONDUCTOR #10 AWG GREEN XLP	
FROM	TO
CB1	SB1
CB1	SB2
CB1	SB3
SB3	SB4

SIGNAL WIRE COLOR CODING		
BLK-BLACK	BLU-BLUE	GRN-GREEN
ORG-ORANGE	RED-RED	WHT-WHITE

These documents shall not be used for any purpose or project for which it is not intended. Mead & Hunt shall be indemnified by the client and held harmless from all claims, damages, liabilities, losses, and expenses, including attorneys' fees and costs, arising out of such misuse or reuse of the documents. In addition, unauthorized reproduction of these documents, in part or as a whole, is prohibited.

VILLAGE OF ALLOUEZ

TRAFFIC SIGNAL PLAN

REVISION

PRELIMINARY  
NOT FOR CONSTRUCTION

M&H NO.: 0120500-161767.01  
DATE: 12/2016  
DESIGNED BY: CMR  
DRAWN BY: RMS  
CHECKED BY: CMR  
DO NOT SCALE DRAWINGS

SHEET NO.

These documents shall not be used for any purpose or project for which it is not intended. Mead & Hunt shall be indemnified by the client and held harmless from all claims, damages, liabilities, losses, and expenses, including attorneys' fees and costs, arising out of such misuse or reuse of the documents. In addition, unauthorized reproduction of these documents, in part or as a whole, is prohibited.

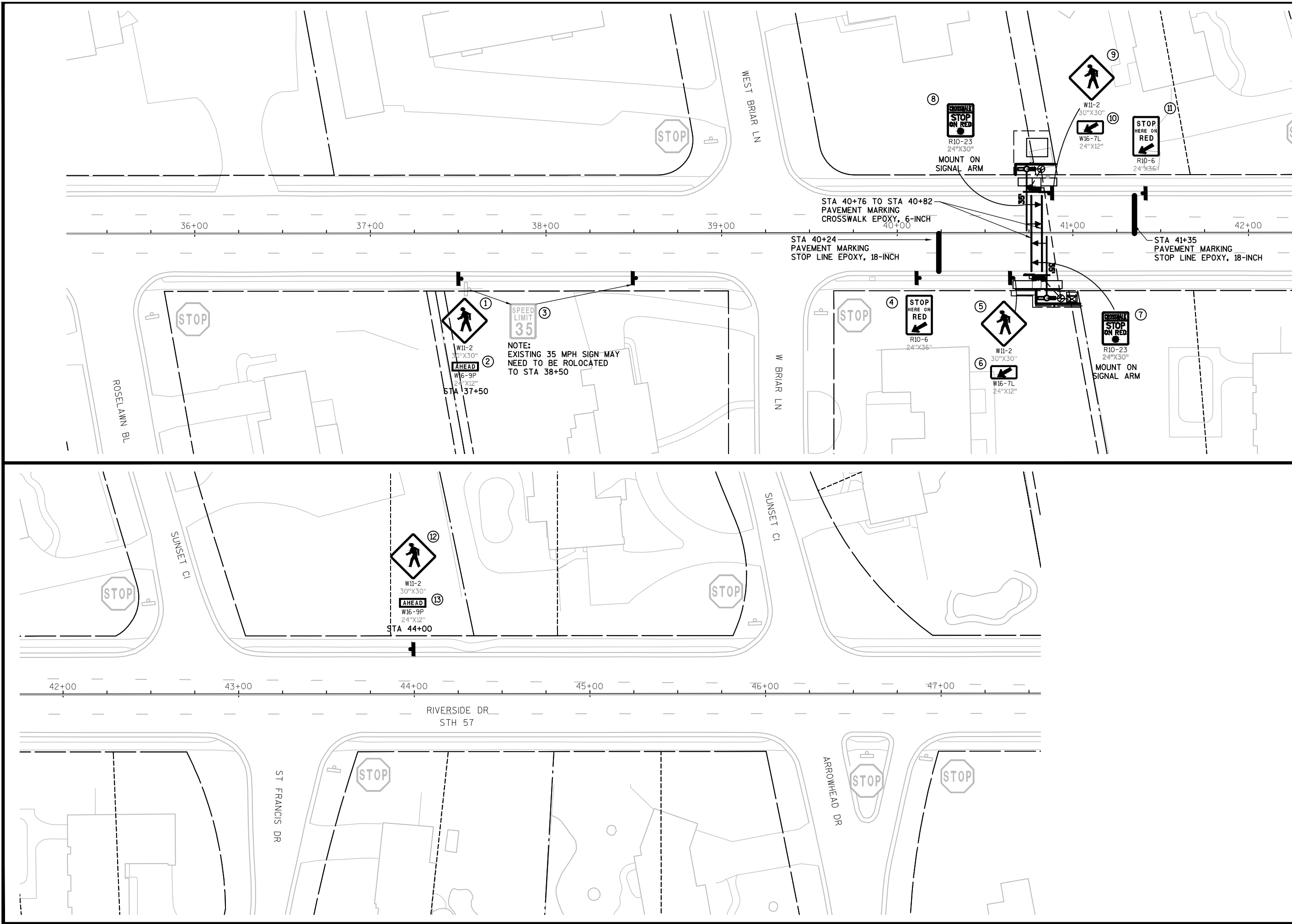
VILLAGE OF ALLOUEZ  
PERMANENT SIGNING AND MARKING PLAN

REVISION

PRELIMINARY  
NOT FOR CONSTRUCTION

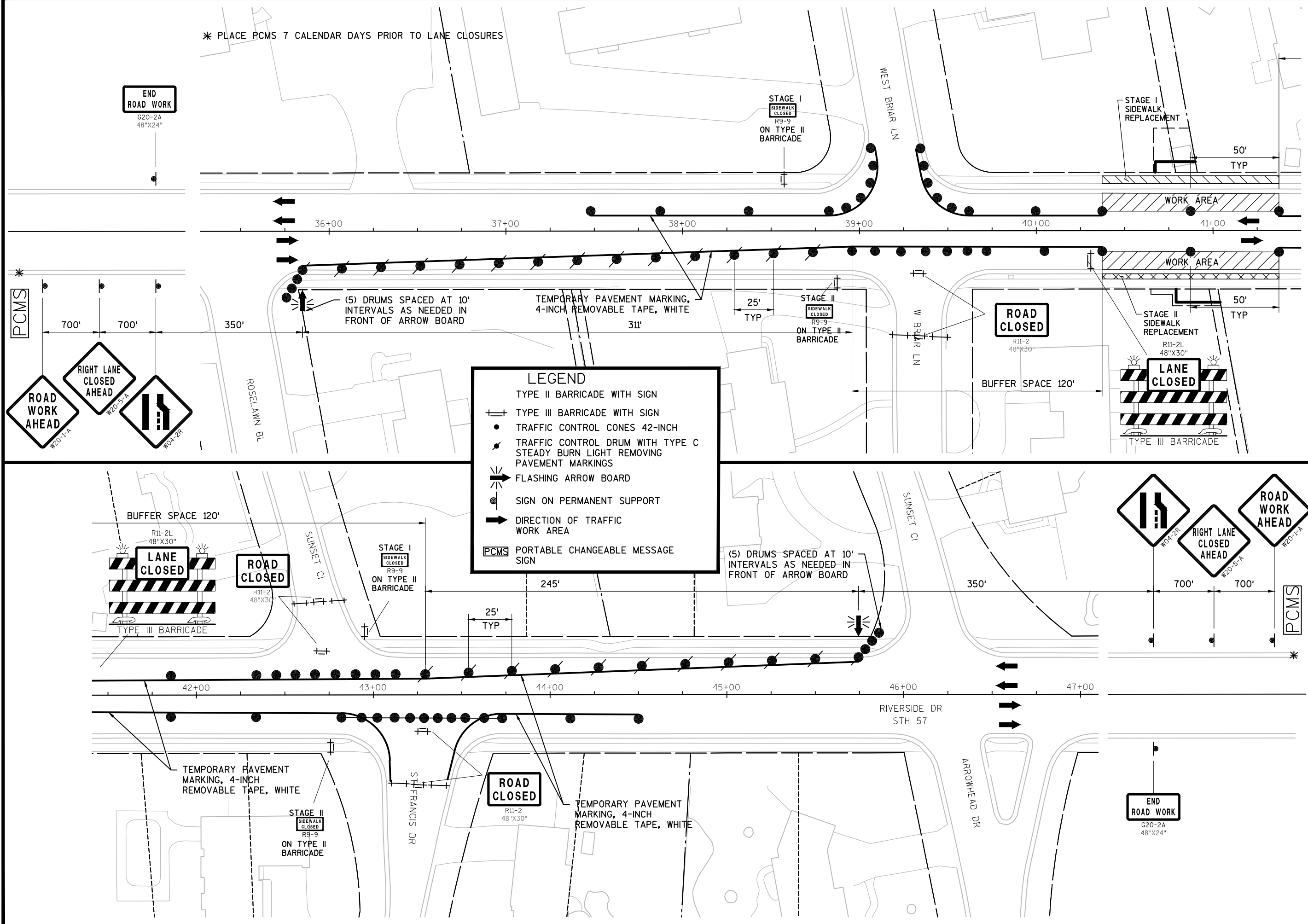
M&H NO.: 0120500-161767.01  
DATE: 12/2016  
DESIGNED BY: CMR  
DRAWN BY: RMS  
CHECKED BY: CMR  
DO NOT SCALE DRAWINGS

SHEET NO.

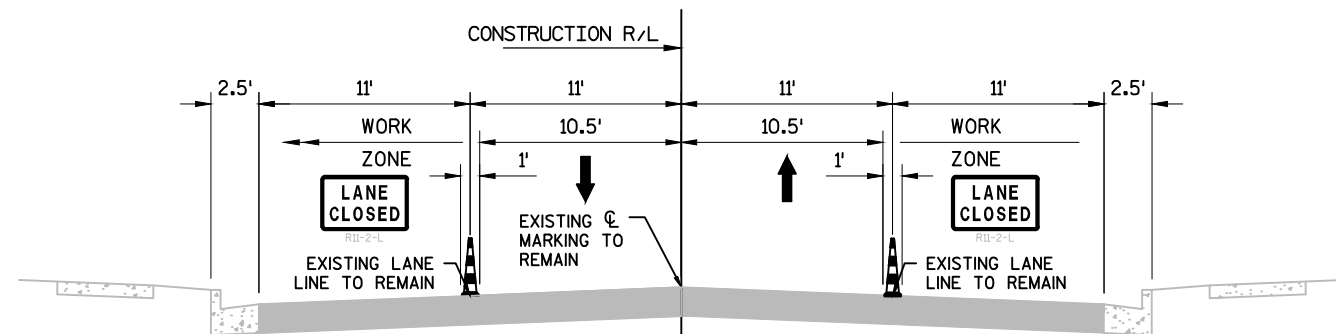




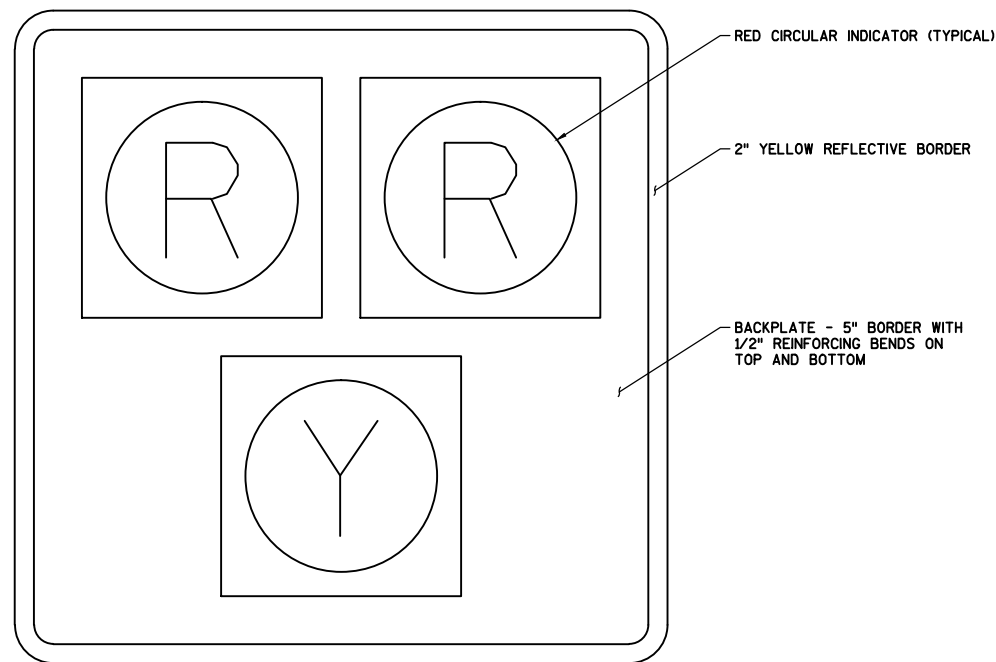
\* PLACE PCMS 7 CALENDAR DAYS PRIOR TO LANE CLOSURES



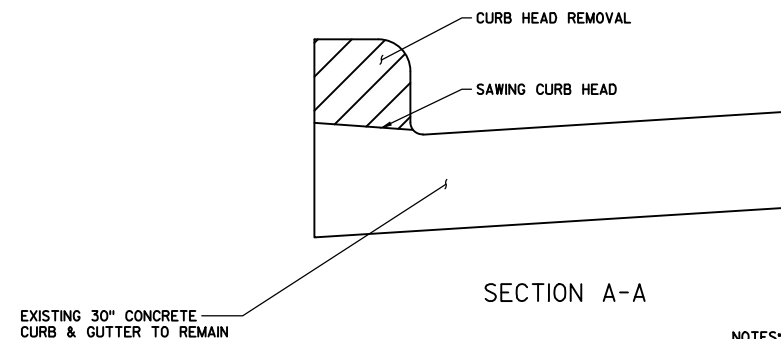
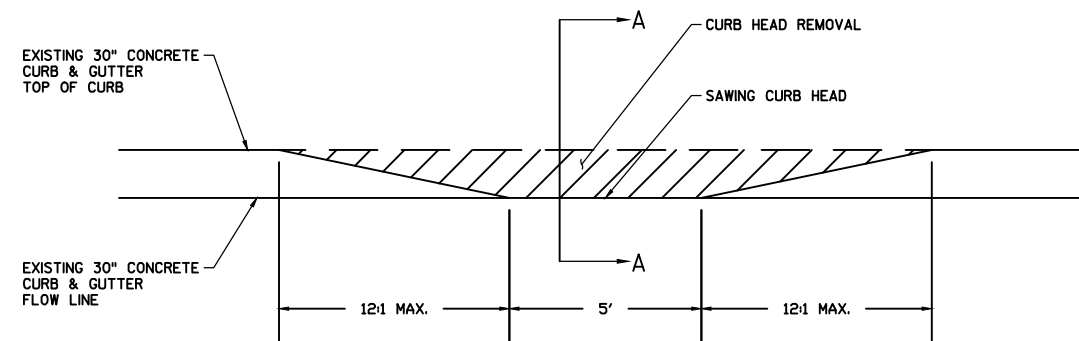




TRAFFIC CONTROL TYPICAL SECTION STH 57/RIVERSIDE DRIVE



PEDESTRIAN HYBRID BEACON

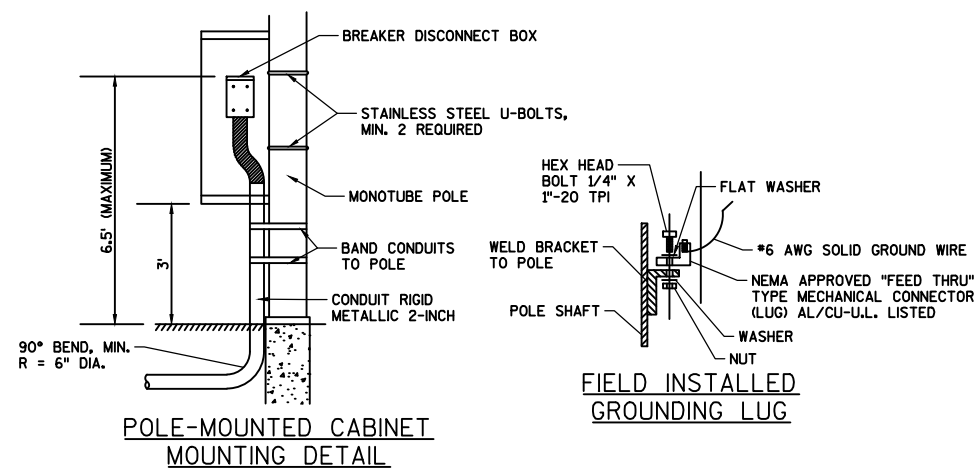


SECTION A-A

SAWING CURB HEAD

NOTES:

- 1.) NO VERTICAL LIPS OR DISCONTINUITIES GREATER THAN 1/4-INCH ARE ALLOWED.
- 2.) SLOPE OF SAWN CURB HEAD SHALL NOT EXCEED 7%



POLE-MOUNTED CABINET  
MOUNTING DETAIL

FIELD INSTALLED  
GROUNDING LUG

NOTES:

- 1.) ALL HARDWARE AND FASTENERS SHALL BE STAINLESS STEEL.
- 2.) CONTRACTOR SHALL INSTALL GROUNDING LUG AS SHOWN.

PERMANENT SIGNING ITEMS

CONCRETE SIDEWALK ITEMS

STATION - STATION OFFSET			204.0155 REMOVING CONCRETE SIDEWALK (SY)	305.0110 BASE AGGREGATE DENSE 3/4-INCH (TON)	601.0600 CONCRETE CURB PEDESTRIAN (LF)	602.0405 CONCRETE SIDEWALK 4-INCH (SF)	602.0515 CURB RAMP DETECTABLE WARNING FIELD NATURAL PATINA (SF)
40+68.9 - 40+90.9	LT		11	6	--	112	8
40+65.9 - 40+93.9	RT		14	7	26	138	8
TOTAL:			25	13	26	250	16

PAVEMENT MARKING ITEMS

STATION	647.0766 PAVEMENT MARKING, CROSSWALK, EPOXY 6-INCH WHITE (LF)	647.0566 PAVEMENT MARKING, STOP LINE EPOXY 18-INCH (LF)
40+76	44	--
40+82	44	--
40+24	--	22
41+35	--	22
TOTAL:	88	44

SAWING CONCRETE ITEMS

		690.0250		SPV.0090.01	
		SAWING		SAWING	
STATION -	STATION	OFFSET	CONCRETE	CURB	HEAD
			(LF)	(LF)	REMARKS
40+65.8 -	40+65.8	27.4' RT	5	--	SIDEWALK MATCH POINT
40+68.9 -	40+68.9	26.6' LT	5	--	SIDEWALK MATCH POINT
40+71.9 -	40+86.9	23.5' LT	--	17	REMOVE CURB HEAD
40+71.9 -	40+86.9	24.5' RT	--	17	REMOVE CURB HEAD
40+90.8 -	40+90.8	26.6' LT	5	--	SIDEWALK MATCH POINT
40+93.9 -	40+93.9	27.4' RT	5	--	SIDEWALK MATCH POINT
TOTAL:			20	34	

LOCATION	SIGN NO.	STATION	SIGN CODE	W X H	637.2210 SIGNS TYPE II REFLECTIVE H (SF)	637.2230 SIGNS TYPE II REFLECTIVE F (SF)	634.0614 POSTS WOOD 4X6X14 (EA)	634.0616 POSTS WOOD 4X6X16 (EA)	638.2102 MOVING SIGNS TYPE II (EA)	638.4000 MOVING SMALL SIGN SUPPORTS (EA)	REMARKS
NORTHBOUND	1	37+50	W11-2	30 X 30	--	6.25	1	--	--	--	
	2	37+50	W16-9P	24 X 12	--	2.00	--	--	--	--	MOUNT WITH SIGN NO. 1
	3	37+50	--	--	--	--	--	--	1	1	SPEED LIMIT 35
	4	40+20	R10-6	24 X 36	6.00	--	--	1	--	--	
	5	40+72	W11-2	30 X 30	--	6.25	1	--	--	--	
	6	40+72	W16-7L	24 X 12	--	2.00	--	--	--	--	MOUNT WITH SIGN NO. 5
	7	40+85	R10-23	24 X 30	5.00	--	--	--	--	--	MOUNT ON SIGNAL ARM
SOUTHBOUND	8	40+73	R10-23	24 X 30	5.00	--	--	--	--	--	MOUNT ON SIGNAL ARM
	9	40+86	W11-2	30 X 30	--	6.25	1	--	--	--	
	10	40+86	W16-7L	24 X 12	--	2.00	--	--	--	--	MOUNT WITH SIGN NO. 9
	11	41+39	R10-6	24 X 36	6.00	--	--	1	--	--	
	12	44+00	W11-2	30 X 30	--	6.25	1	--	--	--	
	13	44+00	W16-9P	24 X 12	--	2.00	--	--	--	--	MOUNT WITH SIGN NO. 12
TOTAL:					22.00	33.00	4	2	1	1	

RESTORATION ITEMS

				625.0100	627.0200	629.0210	630.0130
				TOPSOIL	MULCHING	FERTILIZER	SEEDING MIXTURE
STATION - STATION OFFSET				(SY)	(SY)	TYPE B	NO. 30
				(CWT)			(LBS)
40+66	-	40+94	RT	13	13	0.1	0.25
40+69	-	40+91	LT	13	13	0.1	0.25
UNDISTRIBUTED				7	7	0.1	1
TOTAL:				33	33	0.3	1.5

TRAFFIC CONTROL

LOCATION	DAYS	643.0300 DRUMS (EA)	643.0300 TRAFFIC CONTROL DRUMS (DAY)	643.0410 BARRICADES TYPE II (EA)	643.0410 TRAFFIC CONTROL BARRICADES TYPE II (DAY)	643.0410 BARRICADES TYPE III (EA)	643.0420 TRAFFIC CONTROL BARRICADES TYPE III (DAY)	643.0705 TRAFFIC CONTROL WARNING LIGHTS TYPE A (EA)	643.0705 TRAFFIC CONTROL WARNING LIGHTS TYPE A (DAY)	643.0715 TRAFFIC CONTROL WARNING LIGHTS TYPE C (EA)	643.0715 TRAFFIC CONTROL WARNING LIGHTS TYPE C (DAY)	643.0800 TRAFFIC CONTROL ARROW BOARDS (EA)	643.0800 TRAFFIC CONTROL ARROW BOARDS (DAY)	643.0900 TRAFFIC CONTROL SIGNS (EA)	643.0900 TRAFFIC CONTROL SIGNS (DAY)	643.1017.S TRAFFIC CONTROL CONES 42-INCH (EA)	643.1017.S TRAFFIC CONTROL CONES 42-INCH (DAY)	643.1050 TRAFFIC CONTROL SIGNS PCMS (EA)	643.1050 TRAFFIC CONTROL SIGNS PCMS (DAY)
NORTHBOUND	7	14	98	2	14	9	63	18	126	14	98	1	7	11	77	26	182	1	10
SOUTHBOUND	7	11	77	2	14	5	35	10	70	11	77	1	7	9	63	30	210	1	10
UNDISTRIBUTED	7	7	49	1	7	4	28	7	49	7	49	1	7	5	35	14	98	1	5
		224			35		126		245		224		21		175		490		25

NON-METALLIC CONDUIT ITEMS

	652.0210	652.0225	652.0235	652.0615	
	CONDUIT RIGID NONMETALLIC SCHEDULE 40				CONDUIT SPECIAL
LOCATION	1-INCH (LF)	2-INCH (LF)	3-INCH (LF)	3-INCH (LF)	CONSTRUCTION METHOD
CB1 - STUB	10	--	--	--	TRENCH
CB1 - PB1	--	--	14	--	TRENCH
PB1 - SB1	--	--	8	--	TRENCH
PB1 - SB2	--	15	--	--	TRENCH
PB1 - PB2	--	--	--	75	DIRECTIONAL BORE
PB2 - SB3	--	--	9	--	TRENCH
PB2 - SB4	--	13	--	--	TRENCH
	10	28	31	75	

PULLBOXES

			SPV.0060.01 PULL BOXES NON-CONDUCTIVE 24X42 INCH
PB NO.	STATION	OFFSET	(EA)
PB1	40+93.1	37.5' RT	1
PB2	40+81.9	36.3' LT	1
			2

SIGNAL STANDARDS AND MONOTUBE SUPPORT

	657.0100	657.0430	657.1355	657.1535
	PEDESTAL BASES	TRAFFIC SIGNAL STANDARDS ALUMINUM 10-FT	INSTALL POLES TYPE 12	MONOTUBE ARMS 35-FT
SB NO.	(EA)	(EA)	(EA)	(EA)
SB1	--	--	1	1
SB2	1	1	--	--
SB3	--	--	1	1
SB4	1	1	--	--
	2	2	2	2

MISCELLANEOUS SIGNAL ITEMS

	656.0200	658.5069
	ELECTRICAL SERVICE METER BREAKER PEDASTAL (LS)	SIGNAL MOUNTING HARDWARE (LS)
PROJECT	(LS)	(LS)
ALLOUEZ 2017-02	1	1
	1	1

SIGNAL FACE AND PUSH BUTTON ITEMS

			658.0416	658.0600	658.0605	658.0635	SPV.0060.02	SPV.0105.01
			PEDESTRIAN SIGNAL FACE 16-INCH (EA)	LED MODULES 12-INCH RED BALL (EA)	LED MODULES 12-INCH YELLOW BALL (EA)	LED MODULES PEDESTRIAN COUNTDOWN TIMER 16-INCH (EA)	PEDESTRIAN HYBRID BEA CON (EA)	TRANSPORTING AND INSTALLING A ACCESSIBLE PEDESTRIAN PUSH BUTTON SYSTEM (LS)
SB NO.	HEAD NO.	TYPE OF MOUNT						
SB1	1	MONOTUBE ARM	--	2	1	--	1	--
	2	MONOTUBE ARM	--	2	1	--	1	--
SB2	5	PEDESTRIAN	1	--	--	1	--	--
	--	--	--	--	--	--	--	1
SB3	3	MONOTUBE ARM	--	2	1	--	1	--
	4	MONOTUBE ARM	--	2	1	--	1	--
SB4	6	PEDESTRIAN	1	--	--	1	--	--
			2	8	4	2	4	1

TRAFFIC SIGNAL CABLE

	654.0240	654.0260
	CABLE TRAFFIC SIGNAL 7-14 AWG (LF)	CABLE TRAFFIC SIGNAL 12-14 AWG (LF)
LOCATION	(LF)	(LF)
CB1 - HEAD 1	--	105
CB1 - HEAD 2	--	155
CB1 - HEAD 5	70	--
CB1 - HEAD 3	--	190
CB1 - HEAD 4	--	180
CB1 - HEAD 6	155	--
	225	630

EQUIPMENT GROUNDING CONDUCTORS

	655.0515
	ELECTRICAL WIRE TRAFFIC SIGNAL 10 AWG (GREEN) (LF)
LOCATION	(LF)
CB1 - SB1	45
CB1 - SB2	52
CB1 - SB3	131
SB3 - SB4	42
	270

CONCRETE BASES

			654.0101	654.0113	654.0217
			CONCRETE BASES TYPE 1 (EA)	CONCRETE BASES TYPE 13 (EA)	CONCRETE CONTROL CABINET BASES TYPE 9 SPECIAL (EA)
SB NO.	STATION	OFFSET	(EA)	(EA)	(EA)
SB1	40+85.1	37.3' RT	--	1	--
SB2	40+83.0	26.3' RT	1	--	--
SB3	40+73.7	36.3' LT	--	1	--
SB4	40+75.5	25.6' LT	1	--	--
CB1	40+99.4	37.9' RT	--	--	1
			2	2	1

SUMMARY OF STATE FURNISHED MATERIALS - FOR INFORMATION ONLY

QUANTITY	UNIT	DESCRIPTION
1	EA	TRAFFIC SIGNAL CONTROLLER AND CABINET
2	EA	POLES TYPE 12
2	EA	MONOTUBE ARMS 35-FT
1	EA	ACCESSIBLE PEDESTRIAN SIGNAL PUSH BUTTONS