
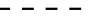




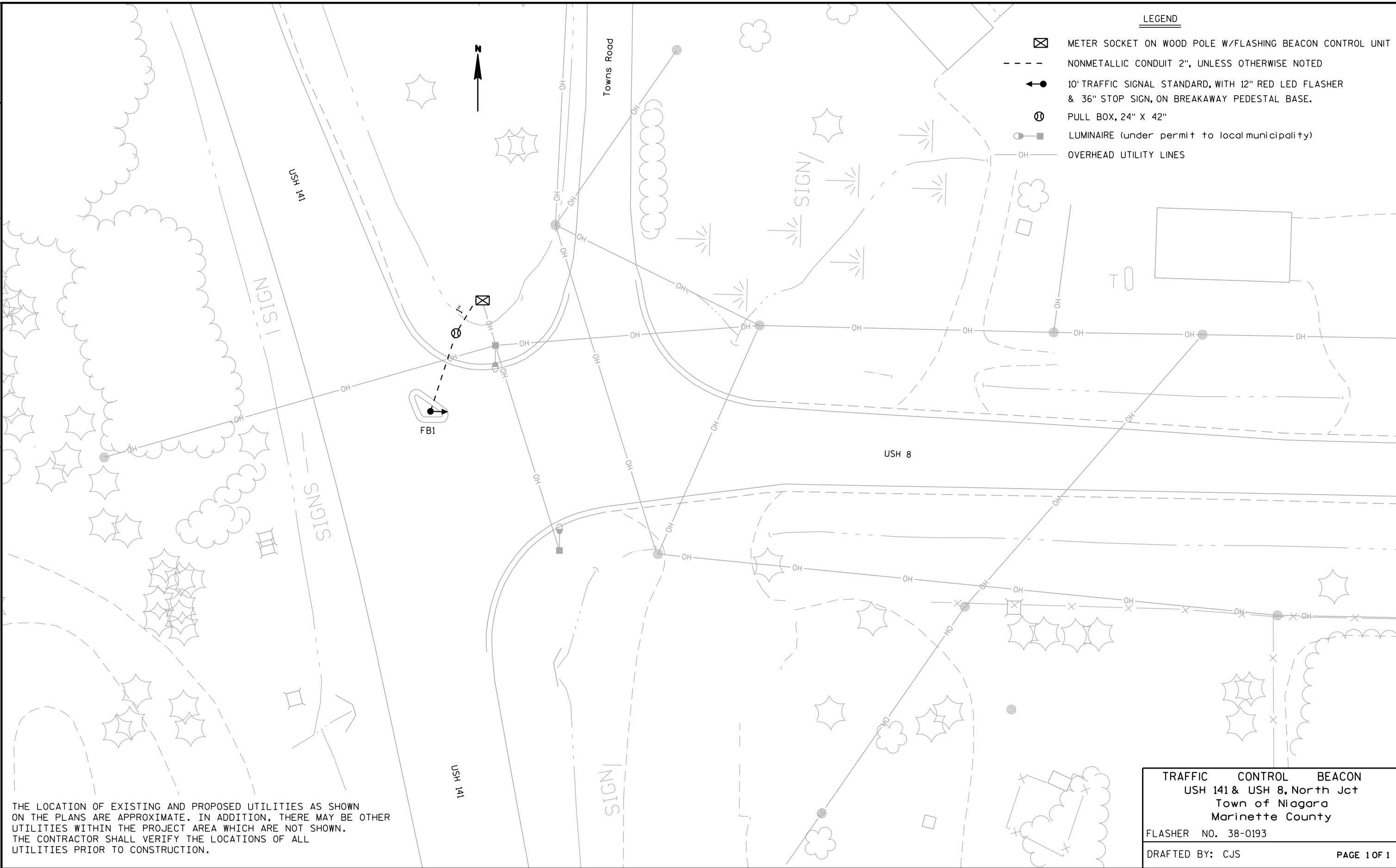


LEGEND

-  METER SOCKET ON WOOD POLE W/FLASHING BEACON CONTROL UNIT
-  NONMETALLIC CONDUIT 2", UNLESS OTHERWISE NOTED
-  10' TRAFFIC SIGNAL STANDARD, WITH 12" RED LED FLASHER & 36" STOP SIGN, ON BREAKAWAY PEDESTAL BASE.
-  PULL BOX, 24" X 42"
-  LUMINAIRE (under permit to local municipality)
-  OVERHEAD UTILITY LINES



THE LOCATION OF EXISTING AND PROPOSED UTILITIES AS SHOWN ON THE PLANS ARE APPROXIMATE. IN ADDITION, THERE MAY BE OTHER UTILITIES WITHIN THE PROJECT AREA WHICH ARE NOT SHOWN. THE CONTRACTOR SHALL VERIFY THE LOCATIONS OF ALL UTILITIES PRIOR TO CONSTRUCTION.

TRAFFIC CONTROL BEACON	
USH 141 & USH 8, North Jct	
Town of Niagara	
Marinette County	
FLASHER NO. 38-0193	
DRAFTED BY: CJS	PAGE 1 OF 1