

### LOOP DETECTOR INSTALLATION

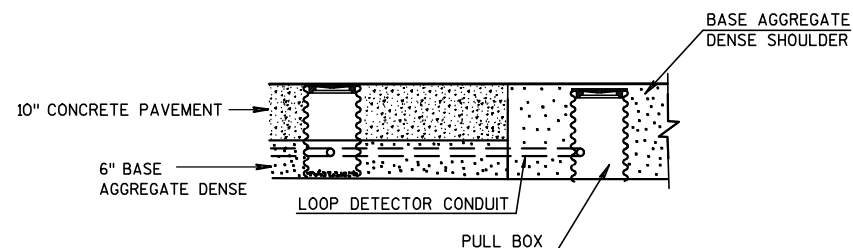
CS 38-6106 (Between East Interchange & North Project Limits)

### GENERAL NOTE

THE LOCATION OF EXISTING AND PROPOSED UTILITY INSTALLATIONS AS SHOWN ON THE PLANS ARE APPROXIMATE. THERE MAY BE OTHER UTILITY INSTALLATIONS WITHIN THE PROJECT AREA THAT ARE NOT SHOWN. THE CONTRACTOR SHALL VERIFY THE LOCATIONS OF ALL UTILITIES PRIOR TO CONSTRUCTION.

### NOTE:

THE LOCATION OF THE CONCRETE CONTROL CABINET BASE & LOOP DETECTORS SHALL BE LOCATED IN THE FIELD BY KIM HEISE. NOTIFY HER 2 WEEKS PRIOR TO INSTALLATION AT (920) 362-6360.



### STANDARD DETAIL DRAWINGS

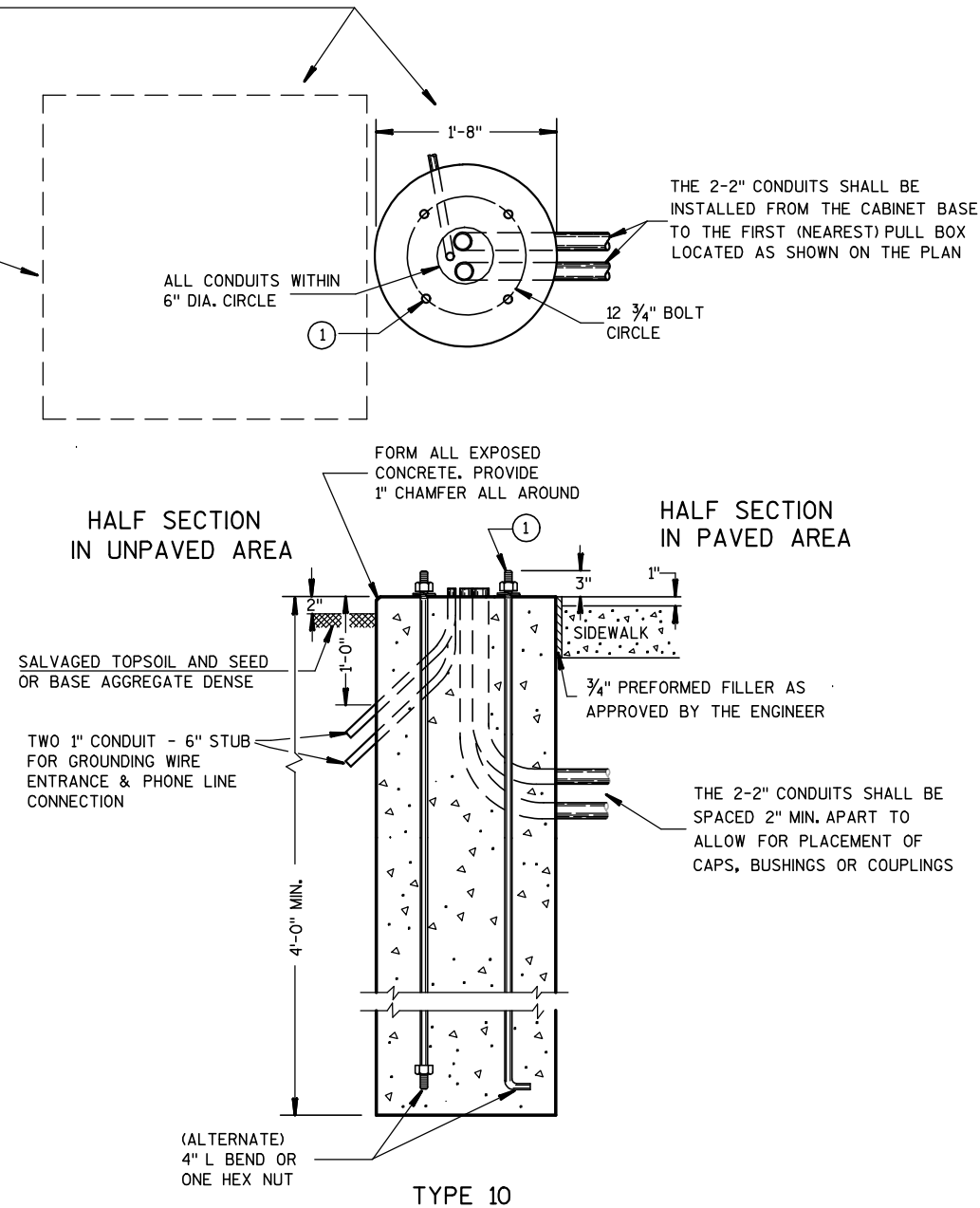
See the following Standard Detail Drawings (SDD) for further guidance on this installation.

- Conduit
- Pull Box
- Loop Detector placed in crushed aggregate base (New Concrete Pavement)

CONTROL CABINET BASE TYPE	DIMENSIONS	C.Y. CONCRETE (APPROX.)
TYPE 10 - POST MOUNT	AS SHOWN	.32

THE LOCATION OF THE CONCRETE BASE & PLATFORM  
SHALL BE LOCATED IN THE FIELD BY KIM HEISE.  
NOTIFY HER 2 WEEKS PRIOR TO INSTALLATION AT (920) 362-6360.

TYPICAL 3'-0" X 3'-0" X 4" THICK  
MAINTENANCE PLATFORM.  
COST TO BE INCLUDED UNDER  
CONCRETE CONTROL CABINET  
BASE TYPE 10.



## GENERAL NOTES

DETAILS OF CONSTRUCTION, MATERIALS AND WORKMANSHIP NOT SHOWN ON THIS DRAWING SHALL CONFORM TO THE PERTINENT REQUIREMENTS OF THE CONTRACT.

CONDUIT HEIGHT ABOVE THE CONCRETE BASE SHALL BE 1 INCH.

DEPTH OF CONDUIT INSTALLED BELOW THE TRAVELED WAY SHALL BE 24 INCHES MINIMUM AND 36 INCHES MAXIMUM.

DEPTH OF CONDUIT INSTALLED THAT IS NOT BELOW THE TRAVELED WAY SHALL BE 18 INCHES MINIMUM AND 36 INCHES MAXIMUM.

ANY EXCEPTION TO THE MAXIMUM DEPTH SHALL BE ONLY WITH THE WRITTEN APPROVAL OF THE ENGINEER.

CONTROL CABINET BASE TOP SURFACES SHALL BE TROWEL FINISHED AND LEVEL.

WHEN A TYPE 10 CONTROL CABINET BASE IS USED TO POST MOUNT A CONTROL CABINET, A 36" SQUARE 4" THICK CONCRETE MAINTENANCE PLATFORM SHALL BE REQUIRED ON THE DOOR SIDE OF THE CABINET. THE TOP 1 INCH SHALL BE ABOVE FINISHED GRADE AND BE BROOM FINISHED AND LEVEL.

MAINTENANCE PLATFORMS ARE NOT REQUIRED WHEN THE SURROUNDING AREA IS PAVED.

ALL CONDUIT ENDS AT THE TOP OF THE CONCRETE BASE SHALL BE PLUGGED IMMEDIATELY AFTER PLACEMENT AND BEFORE CONCRETE IS POURED. CONDUIT IN WHICH WIRE OR CABLE IS NOT BEING INSTALLED SHALL REMAIN PLUGGED.

BELL ENDS SHALL BE INSTALLED ON ALL PVC CONDUIT EXPOSED AT THE TOP OF THE CONCRETE BASE BEFORE INSTALLATION OF CABLE OR WIRE.

CONCRETE FORM DEPTH BELOW FINISHED GRADE SHALL BE 6" MAXIMUM. CONCRETE FORMS SHALL BE REMOVED AFTER CONCRETE HAS SET.

WHEN ANCHOR RODS USING THE ALTERNATE L BEND ARE FURNISHED FOR THE TYPE 10 BASE, THE 4" L BEND SHALL BE IN ADDITION TO THE SPECIFIED ANCHOR ROD BAR LENGTH.

THE "L" BEND SHALL NOT BE THREADED.

STRAIGHT ANCHOR RODS SHALL BE THREADED 12" IN LENGTH ON EACH END OF THE ROD.

FOUR (4) ANCHOR RODS, 1" DIA. X 3'-6"  
ANCHOR RODS SHALL BE MANUFACTURED IN ACCORDANCE WITH SECTION 654.2.1 AND 641.2.2 OF THE STANDARD SPECIFICATIONS AND IN ACCORDANCE WITH A-449, OR ASTM. A-687 (GRADE 105).

## CONTROL STATION LOCATIONS

CS 38-6106 (Between East Interchange & North Project Limits)

## CONCRETE CONTROL CABINET BASE TYPE 10 MODIFIED

(Paid for under Bid Item 654.0220 Concrete Control Cabinet Bases Type 10)