

2

2

BEGIN PROJECT
STA 100+63.00
Y=566,291.282
X=809,151.676

- CASALOMA DR:
- DEEP DITCH
 - WETLAND IMPACTS IN DITCH
 - STAY NORTH OF STOP LIGHT TO AVOID LIGHT AND BOX
 - GRAND CHUTE ADDING SIDEWALK ON WEST SIDE OF CASALOMA
- PRELIMINARY LAYOUT FROM AYRES DOES NOT WORK WITH THIS LAYOUT - IF WE GO WITH THEIR LAYOUT, THERE ARE SIGNIFICANT IMPACTS TO WETLANDS, DITCH, UTILITIES
 - FIRE HYDRANTS
 - SW CROSSES EXISTING SANITARY SEWER
 - ADJUST TERRACE TO LESS THAN 5' FOR THIS RUN OF SIDEWALK
DOES NOT AVOID DITCH SLOPE/WETLANDS. A SMALLER TERRACE DOES AVOID 2 WATER VALVES

- COLORADO AVE (MALL ENTRANCE):
- THERE IS AN EXISTING MULTI USE PATH TO CONNECT INTO AT SW CORNER - EXISTING CURB RAMP IS SKEWED
 - PROPOSED SIDEWALK IS 2' FROM LARGE POWER POLE NEAR INTERSECTION
 - NARROWING TERRACE AT THE SW CORNER DOES NOT CHANGE IMPACTS. WE STILL NEED TO CONNECT INTO EXISTING CURB RAMP ON MULTI-USE PATH - THIS DEFINES THE DESIGN

MATCH LINE 106+70

MATCH LINE 112+80

PROJECT NO: 4075-40-71	HWY: STH 96	COUNTY: OUTAGAMIE	PLAN DETAILS	SHEET	E
------------------------	-------------	-------------------	--------------	-------	---

2

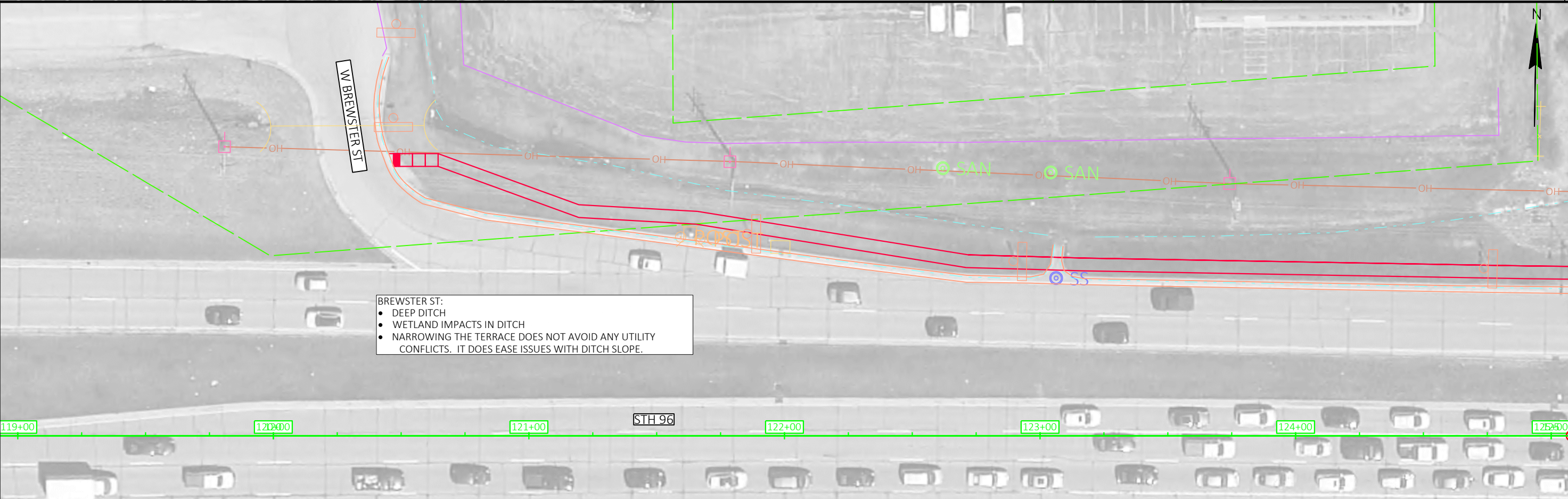
MATCH LINE 112+80



2

MATCH LINE 118+93

MATCH LINE 118+93



MATCH LINE 125+07

PROJECT NO:	4075-40-71
-------------	------------

HWY: STH 96

COUNTY: OUTAGAMIE

PLAN DETAILS

SHEET

E

FILE NAME : N:\PDS\C3D\40754000\SHEETS\PLAN\021201-PD.DWG
LAYOUT NAME - 021202-pd

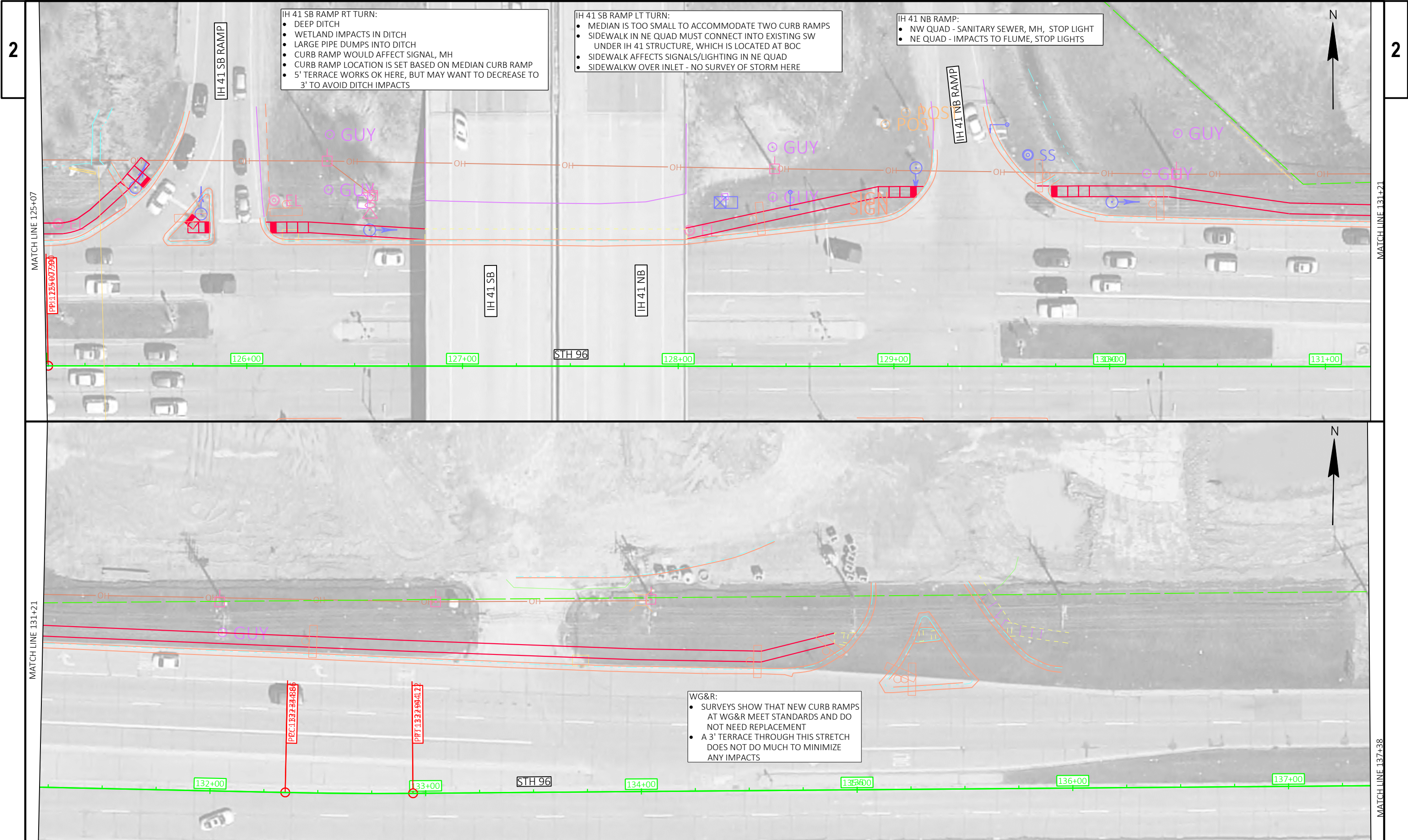
PLOT DATE : 7/29/2021 2:14 PM PLOT BY : HILBERT, JILL A

PLOT BY : HILBERT, JILL A

PLOT NAME : PLOT SCALE : 1 IN:40 FT

PLOT SCALE : 1 IN:40 FT

WISDOT/CADDS SHEET 44



2

2

IH 41 SB RAMP RT TURN:

- DEEP DITCH
- WETLAND IMPACTS IN DITCH
- LARGE PIPE DUMPS INTO DITCH
- CURB RAMP WOULD AFFECT SIGNAL, MH
- CURB RAMP LOCATION IS SET BASED ON MEDIAN CURB RAMP
- 5' TERRACE WORKS OK HERE, BUT MAY WANT TO DECREASE TO 3' TO AVOID DITCH IMPACTS

IH 41 SB RAMP LT TURN:

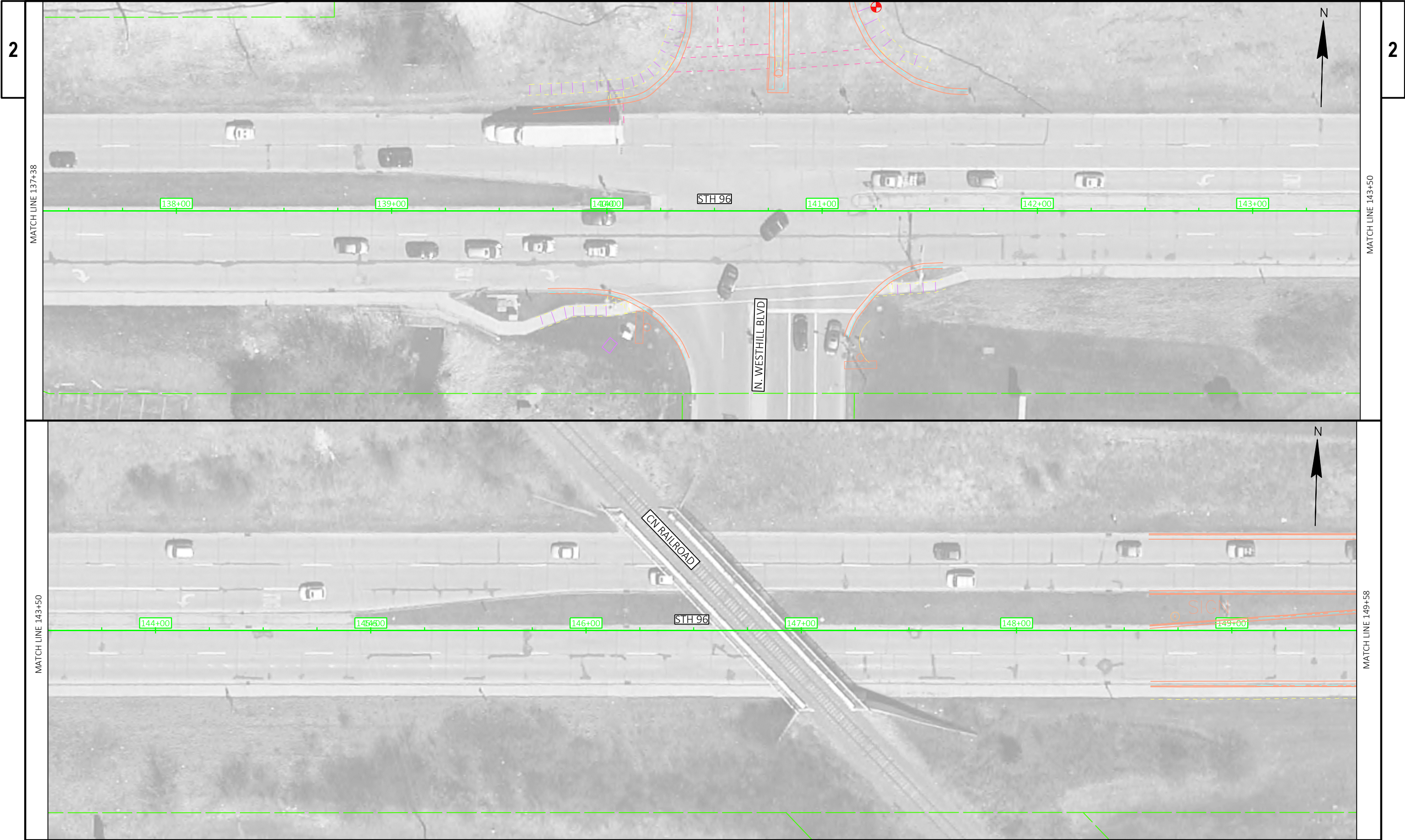
- MEDIAN IS TOO SMALL TO ACCOMMODATE TWO CURB RAMP
- SIDEWALK IN NE QUAD MUST CONNECT INTO EXISTING SW UNDER IH 41 STRUCTURE, WHICH IS LOCATED AT BOC
- SIDEWALK AFFECTS SIGNALS/LIGHTING IN NE QUAD
- SIDEWALKW OVER INLET - NO SURVEY OF STORM HERE

IH 41 NB RAMP:

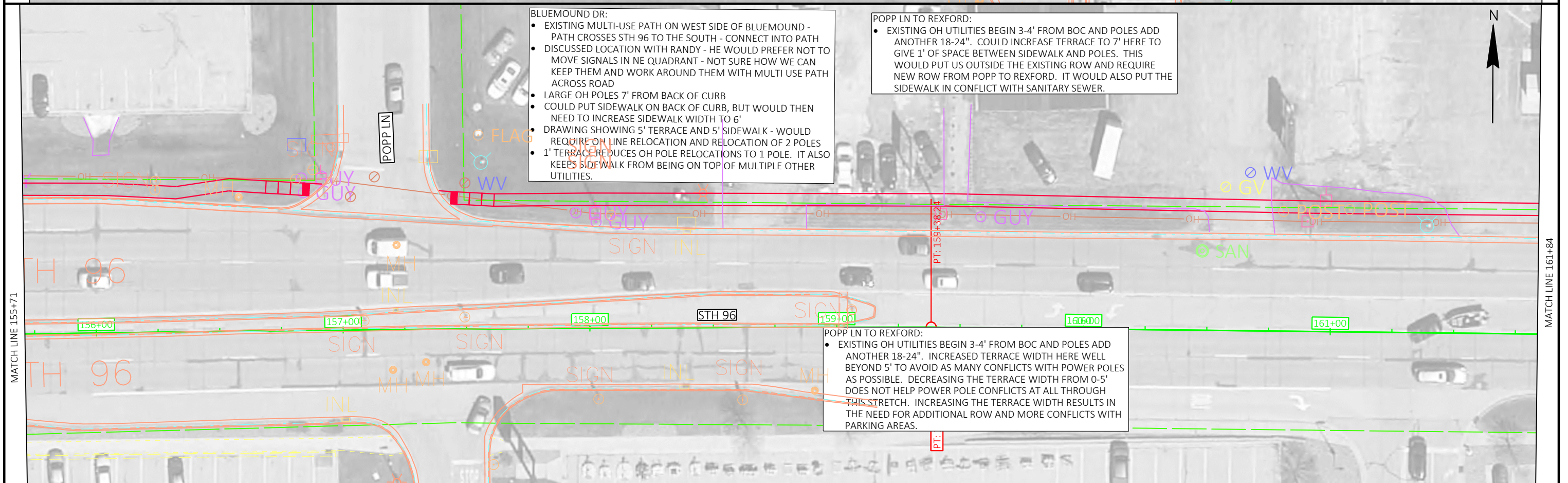
- NW QUAD - SANITARY SEWER, MH, STOP LIGHT
- NE QUAD - IMPACTS TO FLUME, STOP LIGHTS

WG&R:

- SURVEYS SHOW THAT NEW CURB RAMP
- AT WG&R MEET STANDARDS AND DO NOT NEED REPLACEMENT
- A 3' TERRACE THROUGH THIS STRETCH DOES NOT DO MUCH TO MINIMIZE ANY IMPACTS

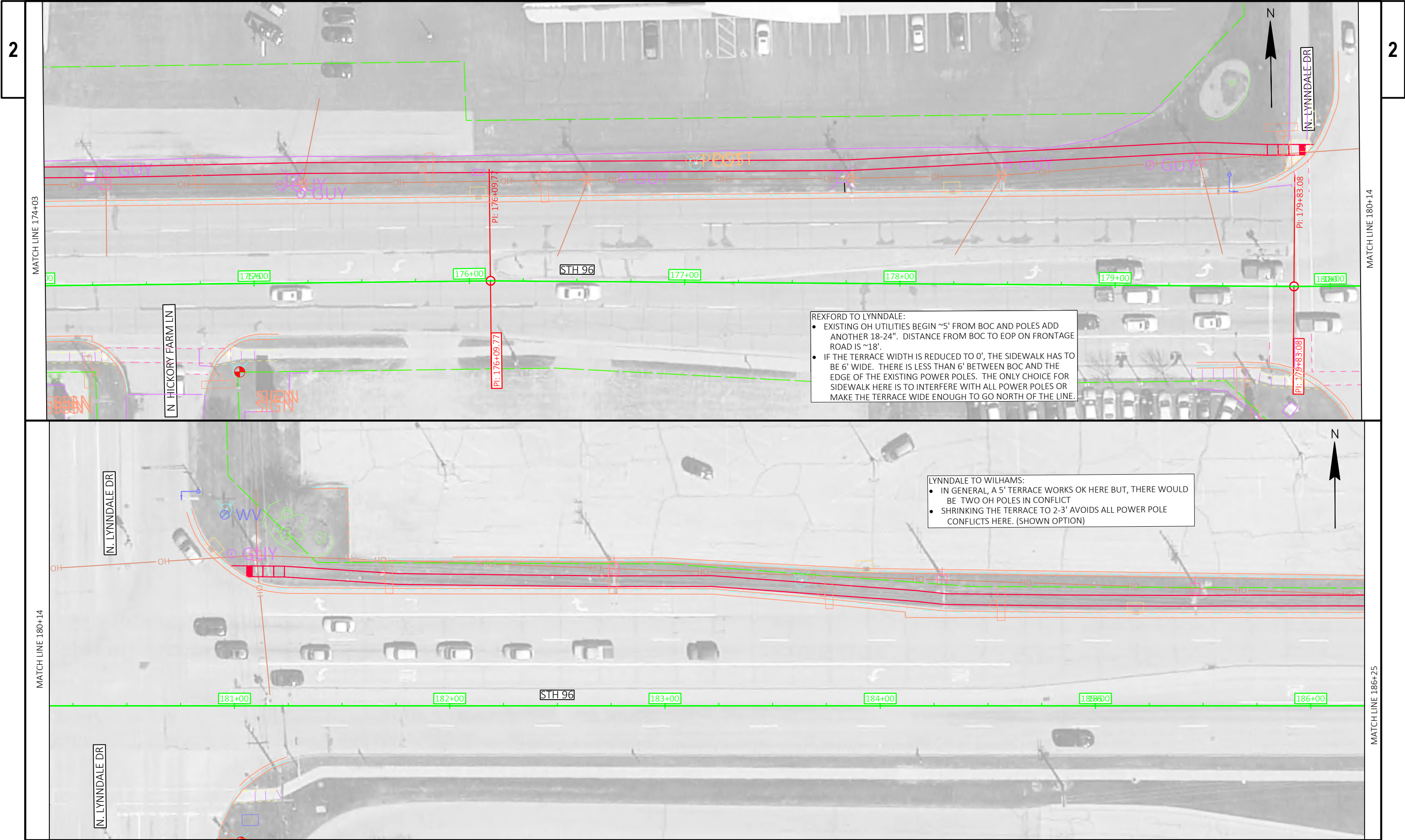


PROJECT NO: 4075-40-71	HWY: STH 96	COUNTY: OUTAGAMIE	PLAN DETAILS	SHEET	E
------------------------	-------------	-------------------	--------------	-------	---

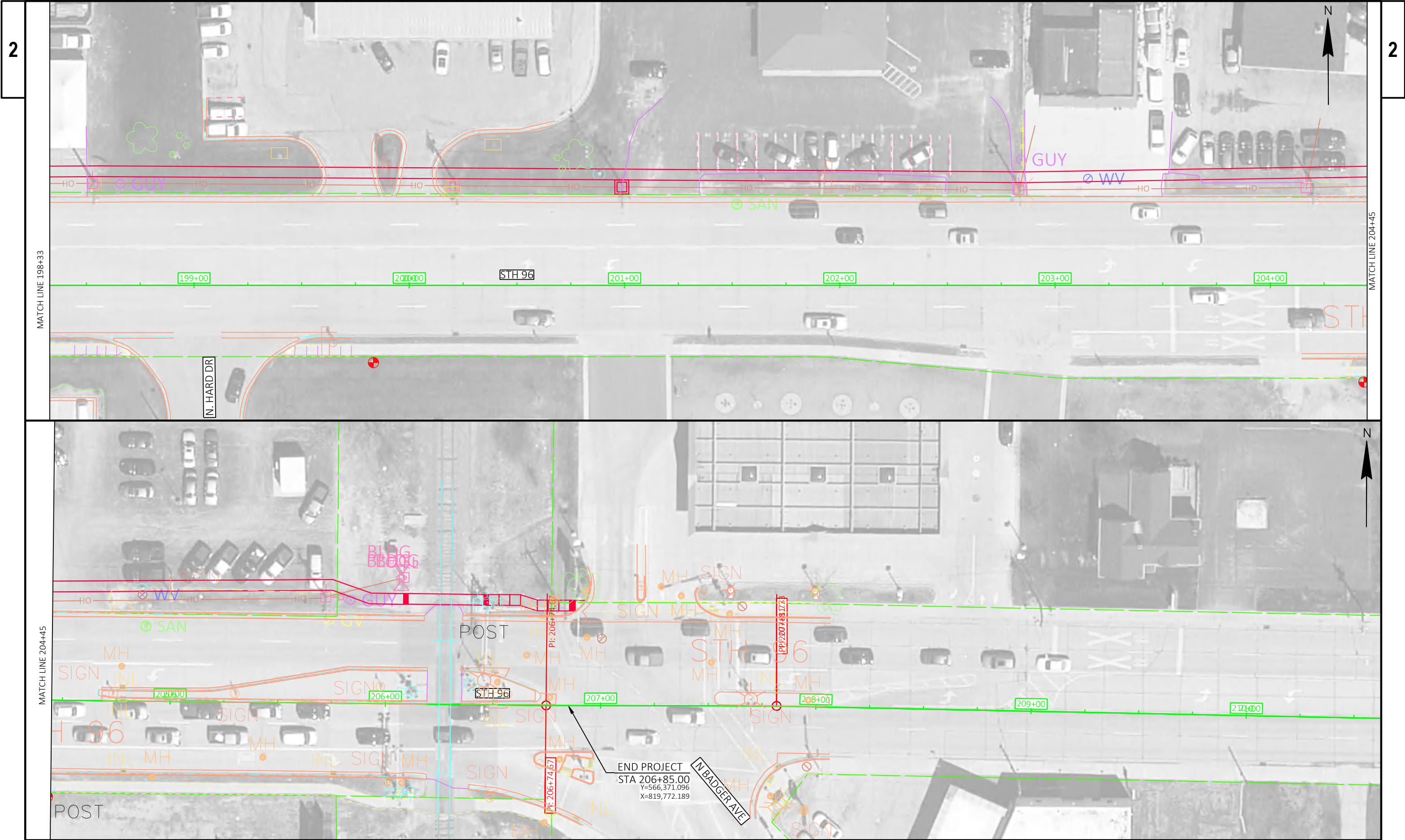




PROJECT NO: 4075-40-71	HWY: STH 96	COUNTY: OUTAGAMIE	PLAN DETAILS	SHEET	E
------------------------	-------------	-------------------	--------------	-------	---







PROJECT NO: 4075-40-71	HWY: STH 96	COUNTY: OUTAGAMIE	PLAN DETAILS	SHEET	E
------------------------	-------------	-------------------	--------------	-------	---