

2

2

LEGEND

EXISTING RIGHT OF WAY

PROPOSED SIDEWALK

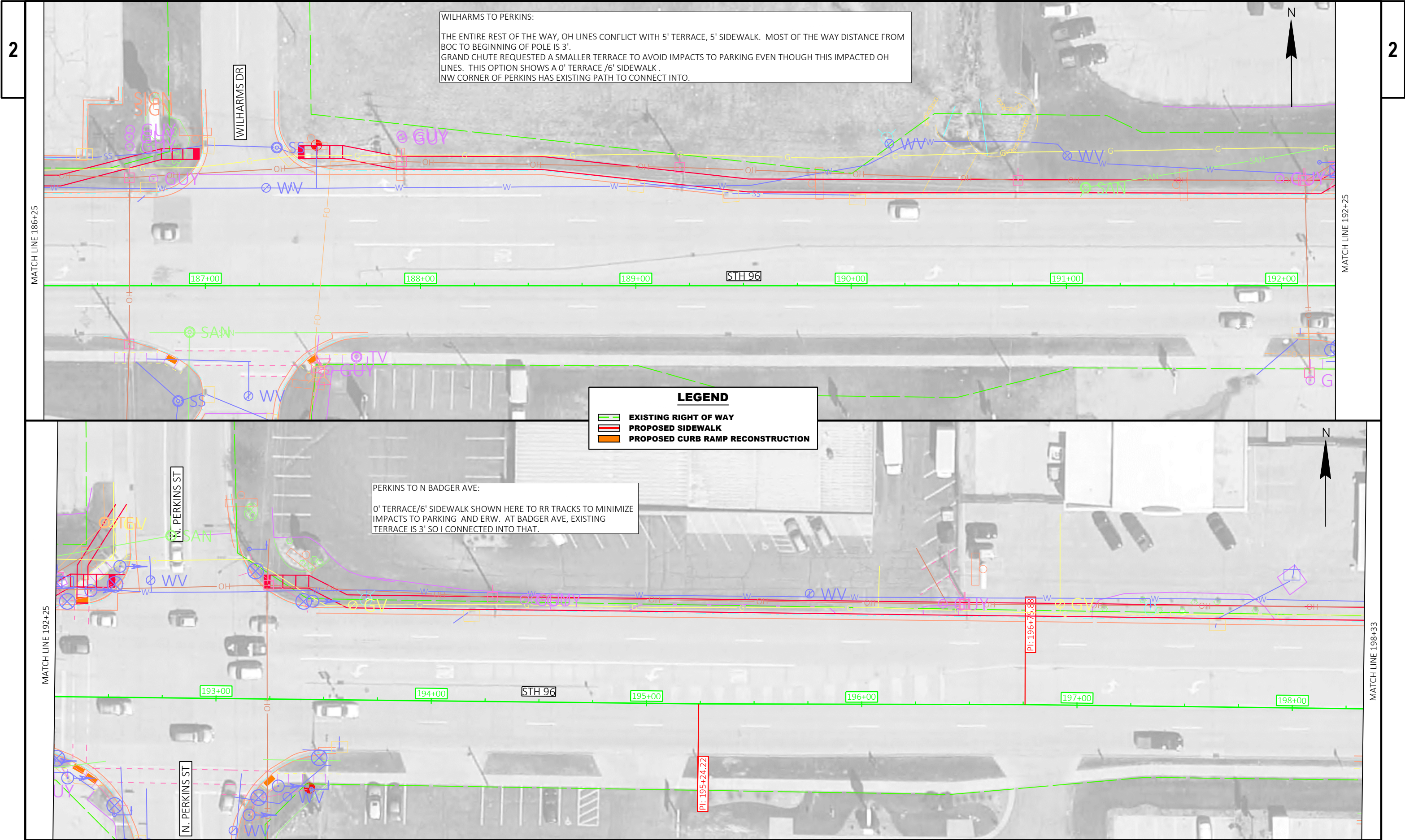
PROPOSED CURB RAMP RECONSTRUCTION

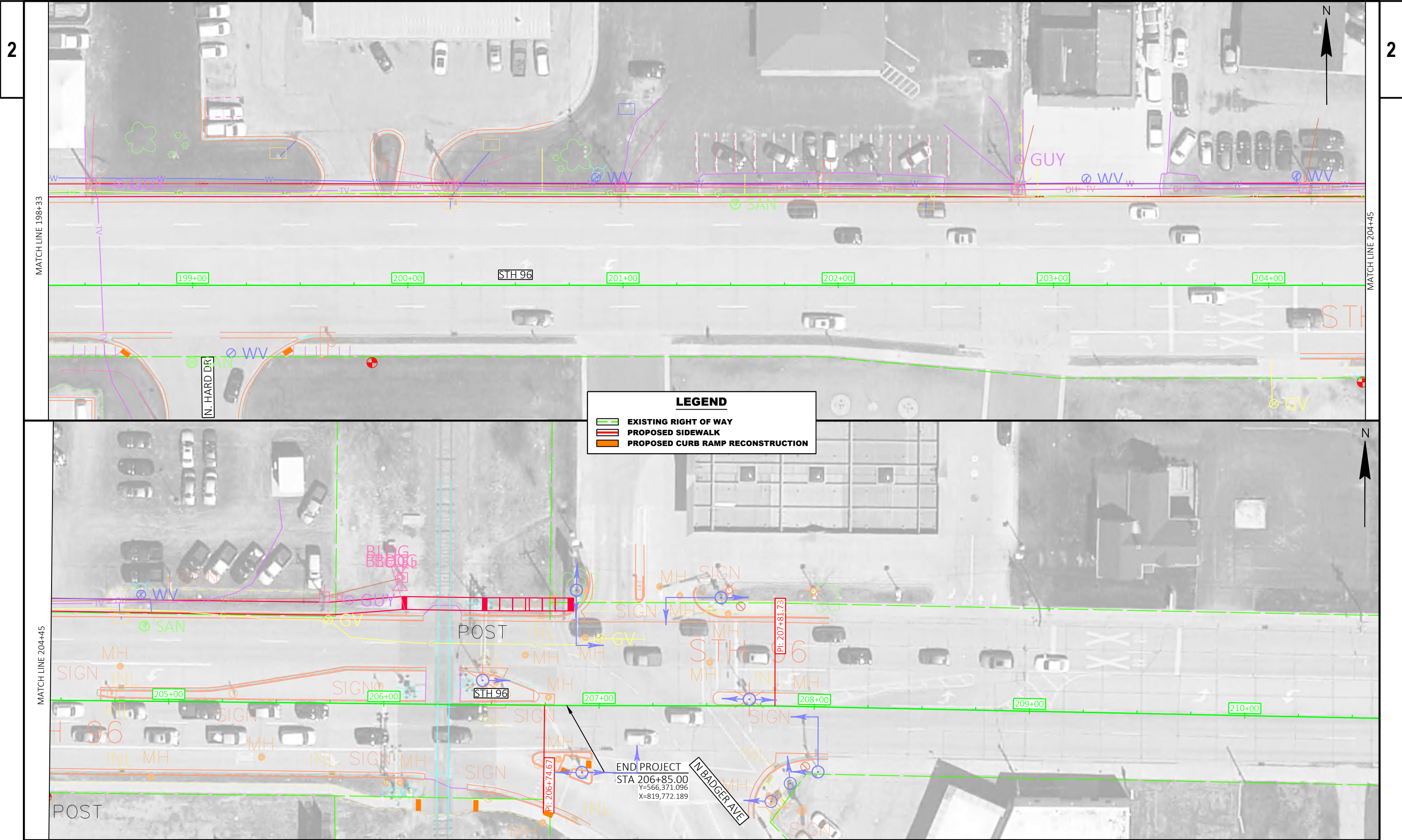
REXFORD TO LYNNDALE:

- EXISTING OH UTILITIES BEGIN ~5' FROM BOC AND POLES ADD ANOTHER 18-24". DISTANCE FROM BOC TO EOP ON FRONTAGE ROAD IS ~18'.
- IF THE TERRACE WIDTH IS REDUCED TO 0', THE SIDEWALK HAS TO BE 6' WIDE. THERE IS LESS THAN 6' BETWEEN BOC AND THE EDGE OF THE EXISTING POWER POLES. THE ONLY CHOICE FOR SIDEWALK HERE IS TO INTERFERE WITH ALL POWER POLES OR MAKE THE TERRACE WIDE ENOUGH TO GO NORTH OF THE LINE. GC PREFERRED A MORE NARROW TERRACE AND INTERFERENCE WITH POWER POLES TO AVOID THE LOSS OF PARKING LOTS. SHOWING 0' TERRACE/6' SIDEWALK HERE.

LYNNDALE TO WILHARMS:

- IN GENERAL, A 5' TERRACE WORKS OK HERE BUT, THERE WOULD BE TWO OH POLES IN CONFLICT
- SHRINKING THE TERRACE TO 2-3' AVOIDS ALL POWER POLE CONFLICTS HERE. (SHOWN OPTION W/5' SIDEWALK)
- NW CORNER OF WILHARMS SW ALIGNMENT WAS PLACED TO AVOID OH LINES AND GUY WIRES





PROJECT NO: 4075-40-71	HWY: STH 96	COUNTY: OUTAGAMIE	PLAN DETAILS	SHEET	E
------------------------	-------------	-------------------	--------------	-------	---