

## ALL CLOSURES:

Lane Closure System (WisLCS): [transportal.cee.wisc.edu/closures](http://transportal.cee.wisc.edu/closures)

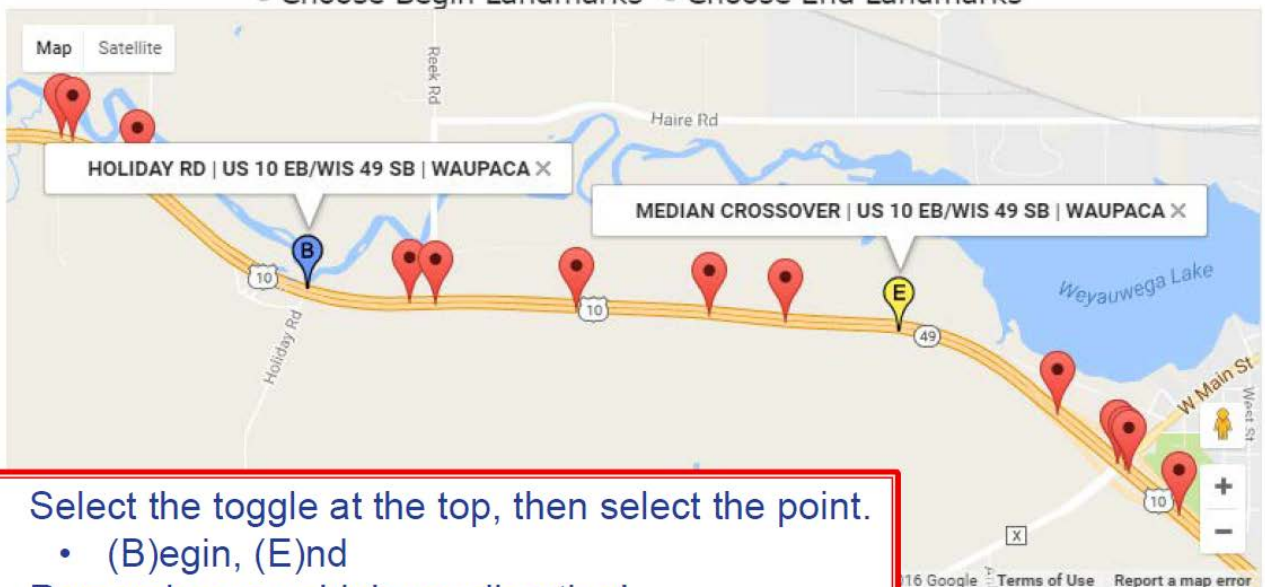
# LCS Advanced Notification

(as of 4/15/16)

Closure affecting OSOW < 16' available width < 15' effective width	MINIMUM Notification
Lane and shoulder closures	7 days
Full roadway closures	7 days
Ramp closures	7 days
Detours	7 days
Closures not affecting OSOW	
Lane and shoulder closures	3 business days
Modifications to any LCS entry	3 business days

Select landmark from below

☐ Choose Begin Landmarks ☒ Choose End Landmarks



- Select the toggle at the top, then select the point.
  - (B)egin, (E)nd
- Remember your highway direction!
  - Select points in the direction of travel.
- Once set, hit Submit.

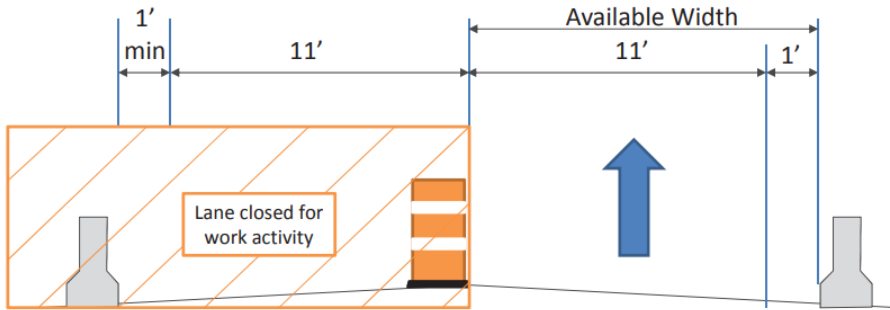
Submit

Cancel

## **ALL CLOSURES, cont.:**

### **Width Restrictions and Lane Closure System**

1 Lane Open



**LCS Entry → Available Width - 1' Buffer = 11' Effective Width**

**Width Signing → 11' Max Width**

Available width < 16':

Width warning sign(s) required.

Recommend 2 Locations:

- One in WZTC advanced warning area
- One at location where a wide load could exit with supplemental **XX AHEAD** sign below

**INCLUDE EFFECTIVE WIDTH CALCULATION IN COMMENTS**

## **CLOSURES ON I-39, US 10 (4-lane), US 51 (4/6-lane), WIS 29:**

### **LCS Documentation for Regional Traffic Engineer**

- **No LCS Worksheets for 2018**
- **Send email to Cara.Abts@dot.wi.gov**
- **Email subject line: Project ID, LCS ID Number(s)**  
(ex.: 1555-55-55, LCS 65300-2)
- **Include in email:**
  - Project stage/phase
  - Any other info needed to give RTE clear understanding of closure
- **Need to modify a closure?**
  - If accepted, search for it in the MODIFY tab
  - If not accepted, search for it in the ACCEPT tab
  - Send RTE an email to indicate the reason for the modification



**Wisconsin Department of Transportation**

**Cara Abts, P.E., PTOE**

Traffic Improvement Engineer  
Division of Transportation System Development

North Central Region  
1681 Second Avenue South  
Wisconsin Rapids, WI 54485

(715) 421-8024  
Cell: (715) 459-4788  
Fax: (715) 423-0334  
cara.abts@dot.wi.gov