

WITH:

PROJECT ID:
WITH:

1620-00-62

COUNTY:

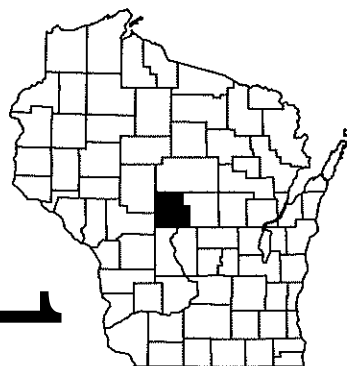
WOOD

JULY 2019

ORDER OF SHEETS

Section No.	1	Title
Section No.	2	Typical Sections and Details
Section No.	3	Estimate of Quantities
Section No.	3	Miscellaneous Quantities
Section No.	4	Right of Way Plat
Section No.	5	Plan and Profile
Section No.	6	Standard Detail Drawings
Section No.	7	Sign Plates
Section No.	8	Structure Plans
Section No.	9	Computer Earthwork Data
Section No.	0	Cross Sections

TOTAL SHEETS = 22

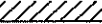



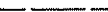


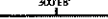
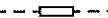






DESIGN DESIGNATION

A.A.D.T. _____
A.A.D.T. _____
D.I.V. _____
D.D. _____
T. _____
DESIGN SPEED = 55 MPH
FSALS _____

CONVENTIONAL SYMBOLS

PLAN

CORPORATE LIMITS	
PROPERTY LINE	
LOT LINE	
LIMITED HIGHWAY EASEMENT	
EXISTING RIGHT OF WAY	
PROPOSED OR NEW R/W LINE	
SLOPE INTERCEPT	
REFERENCE LINE	
EXISTING CULVERT	
PROPOSED CULVERT (Box or Pipe)	
COMBUSTIBLE FLUIDS	
MARSH AREA	
WOODED OR SHRUB AREA	

PROFILE

GRADE LINE
ORIGINAL GROUND
MARSH OR ROCK PROFILE
(To be noted as such)
SPECIAL DITCH
GRADE ELEVATION
CULVERT (Profile View)
UTILITIES
ELECTRIC
FIBER OPTIC
GAS
SANITARY SEWER
STORM SEWER
TELEPHONE
WATER
UTILITY PEDESTAL
POWER POLE
TELEPHONE POLE

STATE OF WISCONSIN
DEPARTMENT OF TRANSPORTATION

PLAN OF PROPOSED IMPROVEMENT

BEAVER CREEK BRIDGES

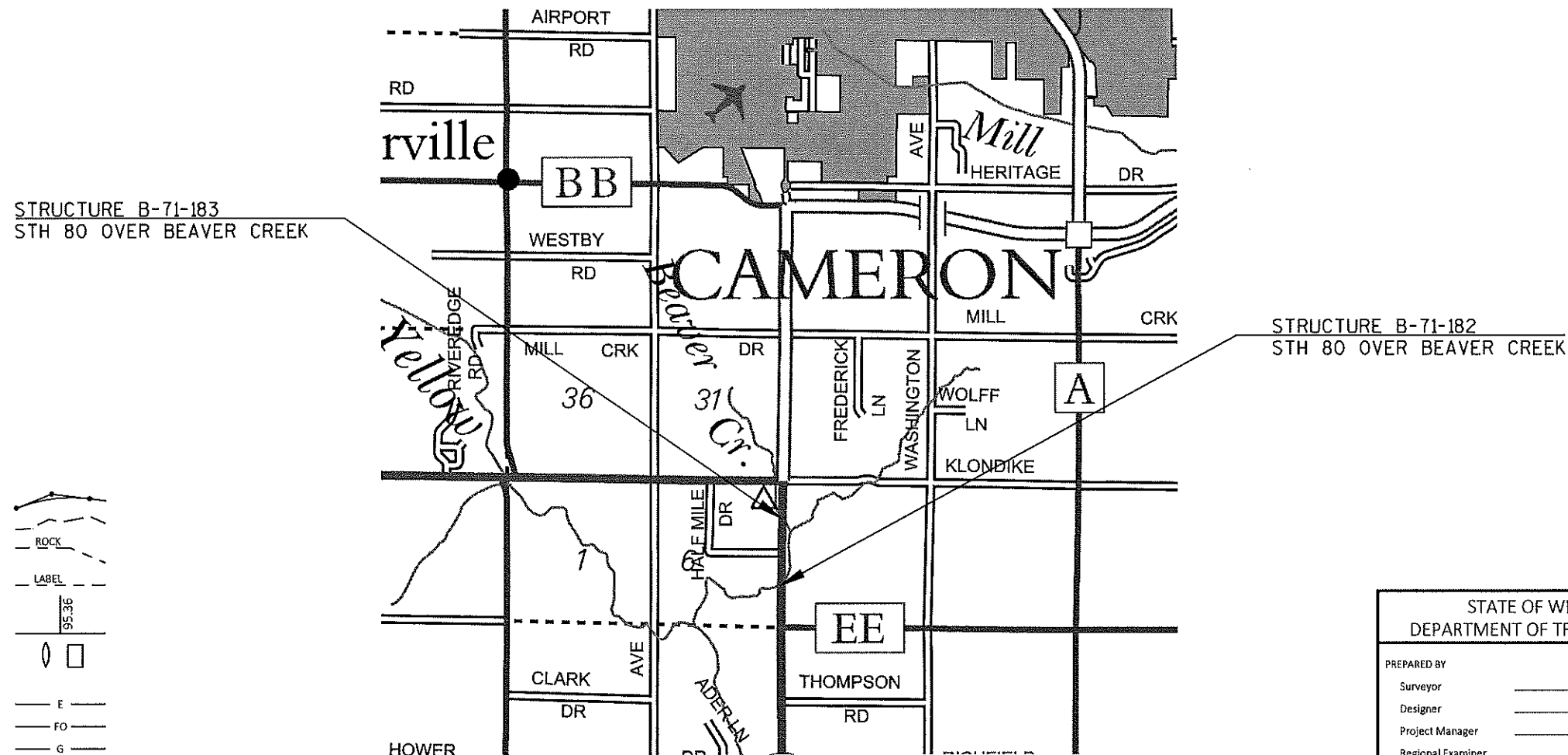
WOOD CTY BRIDGES B-71-182.183

STH 80

WOOD

STATE PROJECT NUMBER
1620-00-62

STATE PROJECT	FEDERAL PROJECT	
	PROJECT	CONTRACT
1620-00-62	WISC 2019500	1



LAYOUT

SCALE 0 1 MI

TOTAL NET LENGTH OF CENTERLINE =

HORIZONTAL POSITIONS SHOWN ON THIS PLAN ARE WISCONSIN COORDINATE REFERENCE SYSTEM (WISCRS), COUNTY COUNTY, NAD83 (YEAR, IN U.S. SURVEY FEET. POSITIONS SHOWN ARE GRID COORDINATES, GRID BEARINGS, AND GRID DISTANCES. GRID DISTANCES ARE THE SAME AS GROUND DISTANCES. ELEVATIONS ARE REFERENCED TO NAVD 88 (YEAR, GPS DERIVED ELEVATIONS ARE BASED ON GEOID 12A.

STATE OF WISCONSIN
DEPARTMENT OF TRANSPORTATION

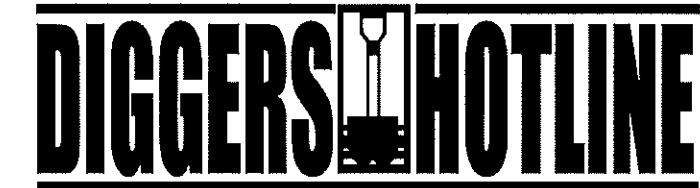
PREPARED BY	
Surveyor	NC REGION
Designer	JUSTIN WIGAND
Project Manager	JEFFREY STEWART
Regional Examiner	CHERYL SIMON
Regional Supervisor	NICHOLE LYSNE

APPROVED FOR THE DEPARTMENT _____
DATE: 10/25/18 _____ (Signature)

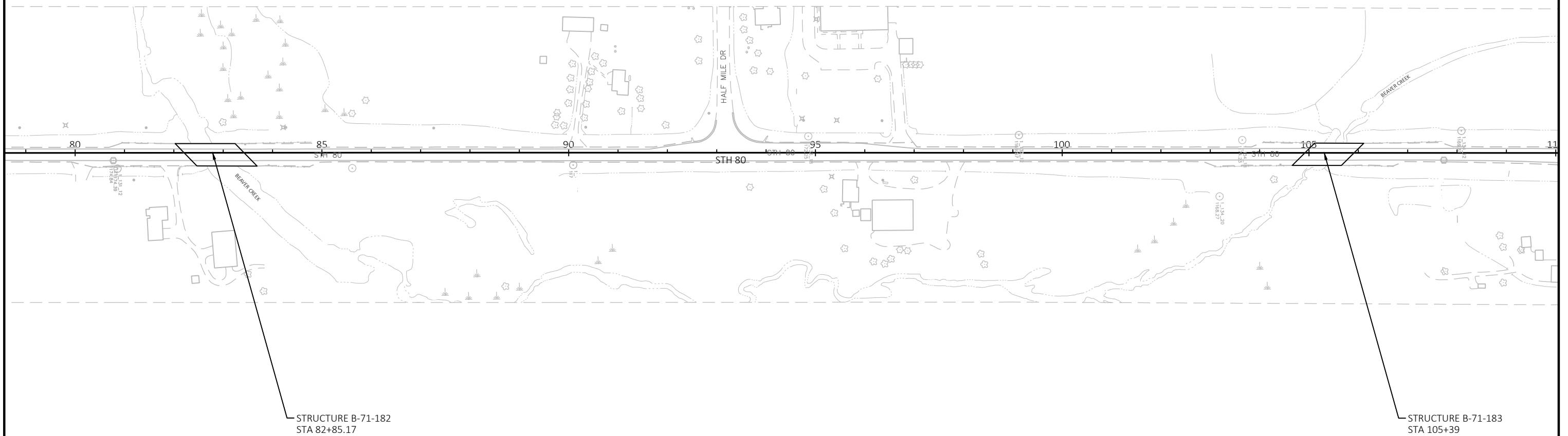
DNR

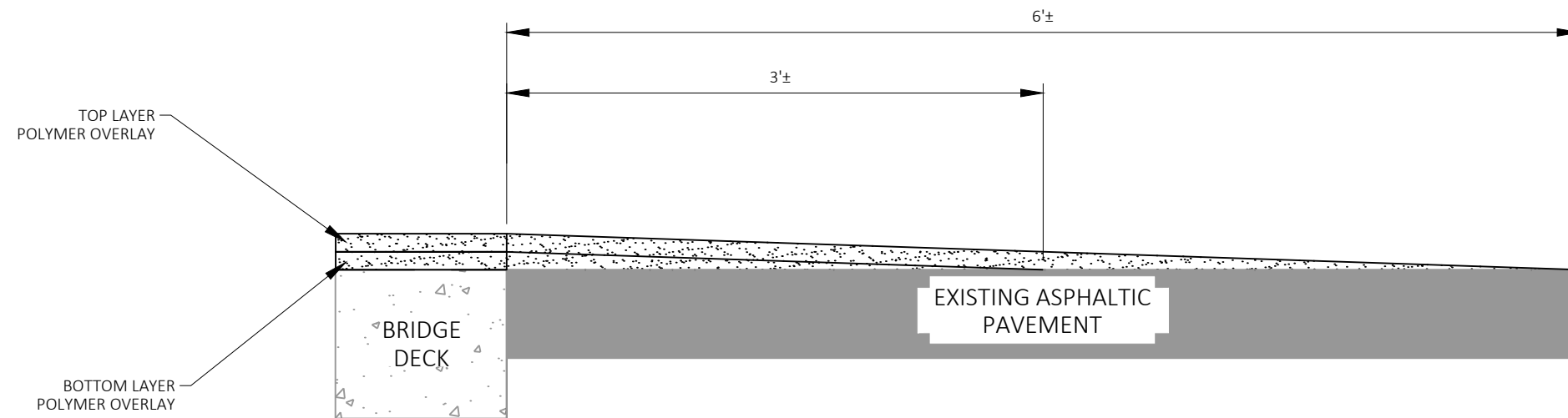
Brad Betthauser
473 GRIFFITH AVENUE
WISCONSIN RAPIDS, WI 54494
PHONE: (715) 421-7851
E-MAIL: BRADLEY.BETTHAUSER@WISCONSIN.GOV

There are utility facilities within the project area that are not shown on the plans. The contractor shall coordinate his construction activities with a call to Diggers Hotline and/or a direct call to the utilities that have facilities in the area. Not all utilities are members of Diggers Hotline.



Dial  or (800)242-8511
www.DiggersHotline.com



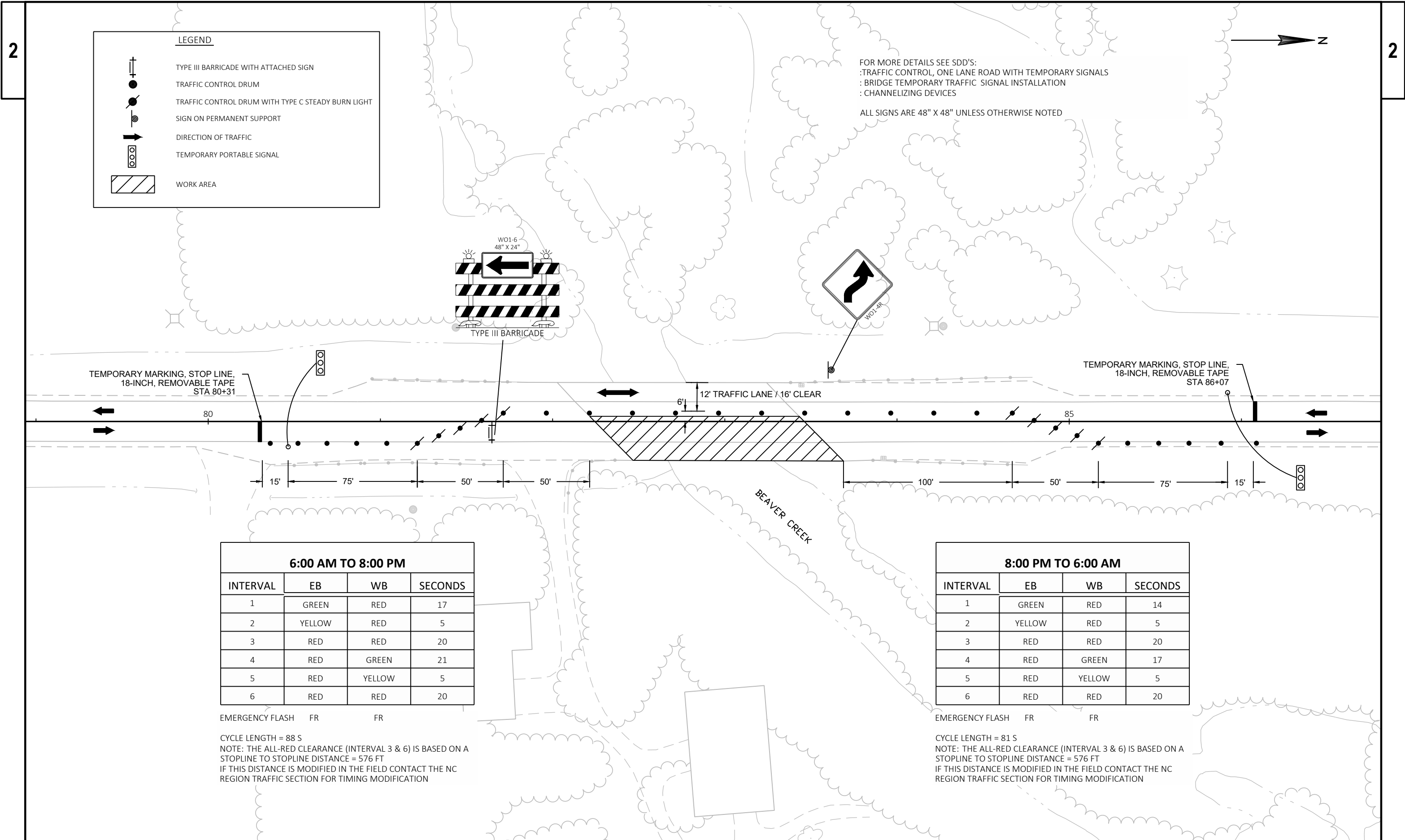


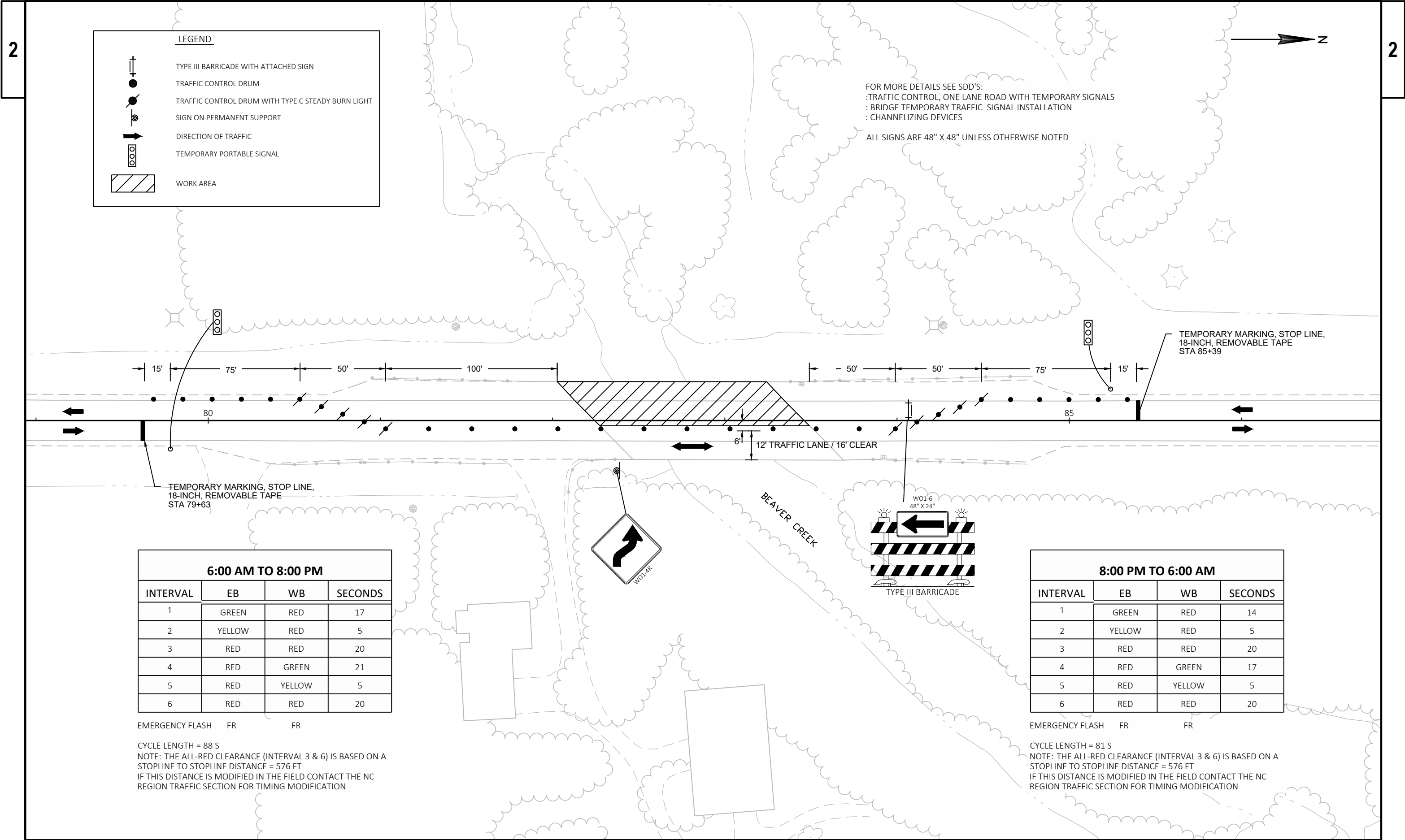
TRANSITION AT STRUCTURES

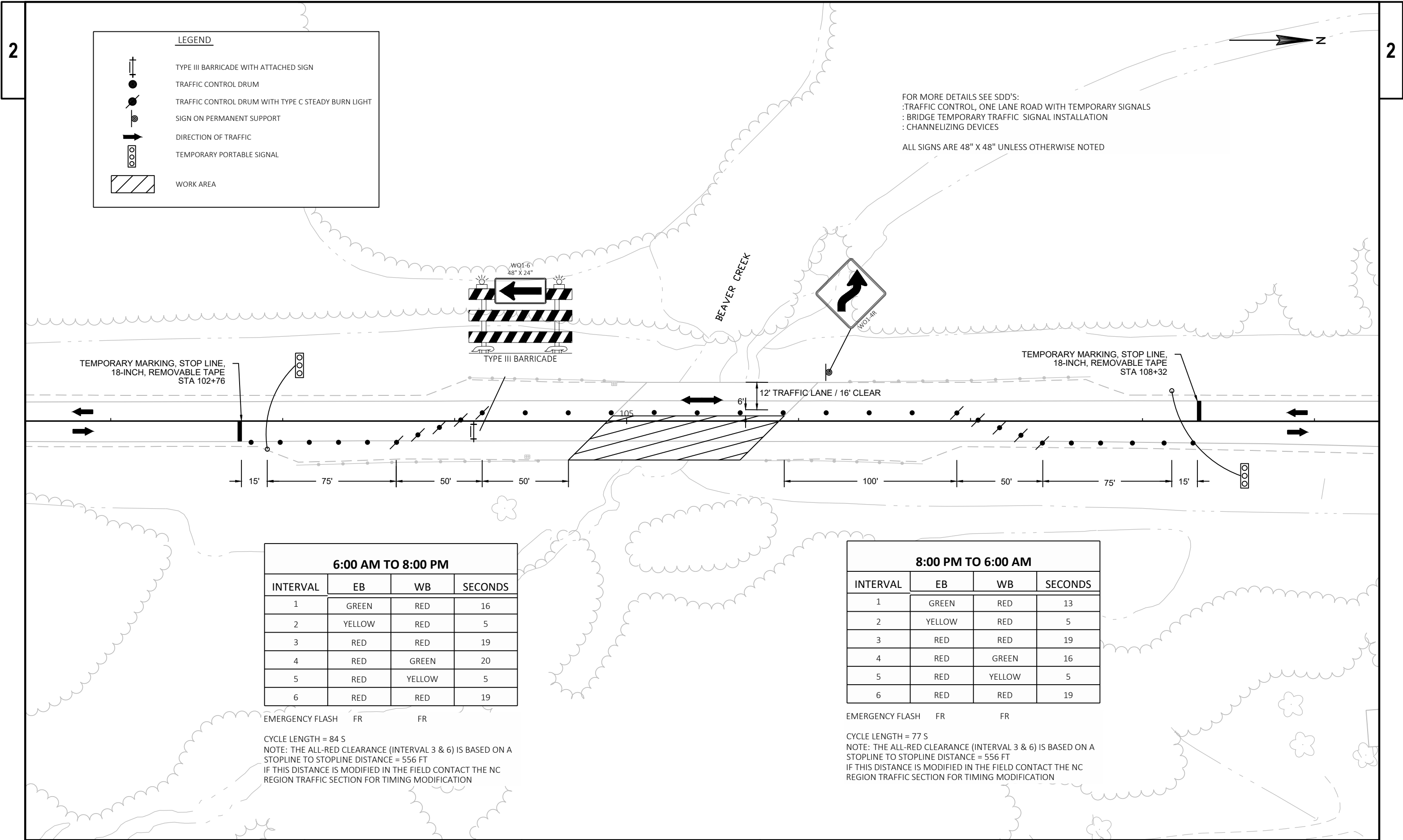
STA 82+18.4 - STA 82+24.4
STA 83+45.94 - STA 83+51.94
STA 104+83.23 - STA 104+89.23
STA 105+88.77 - STA 105+94.77

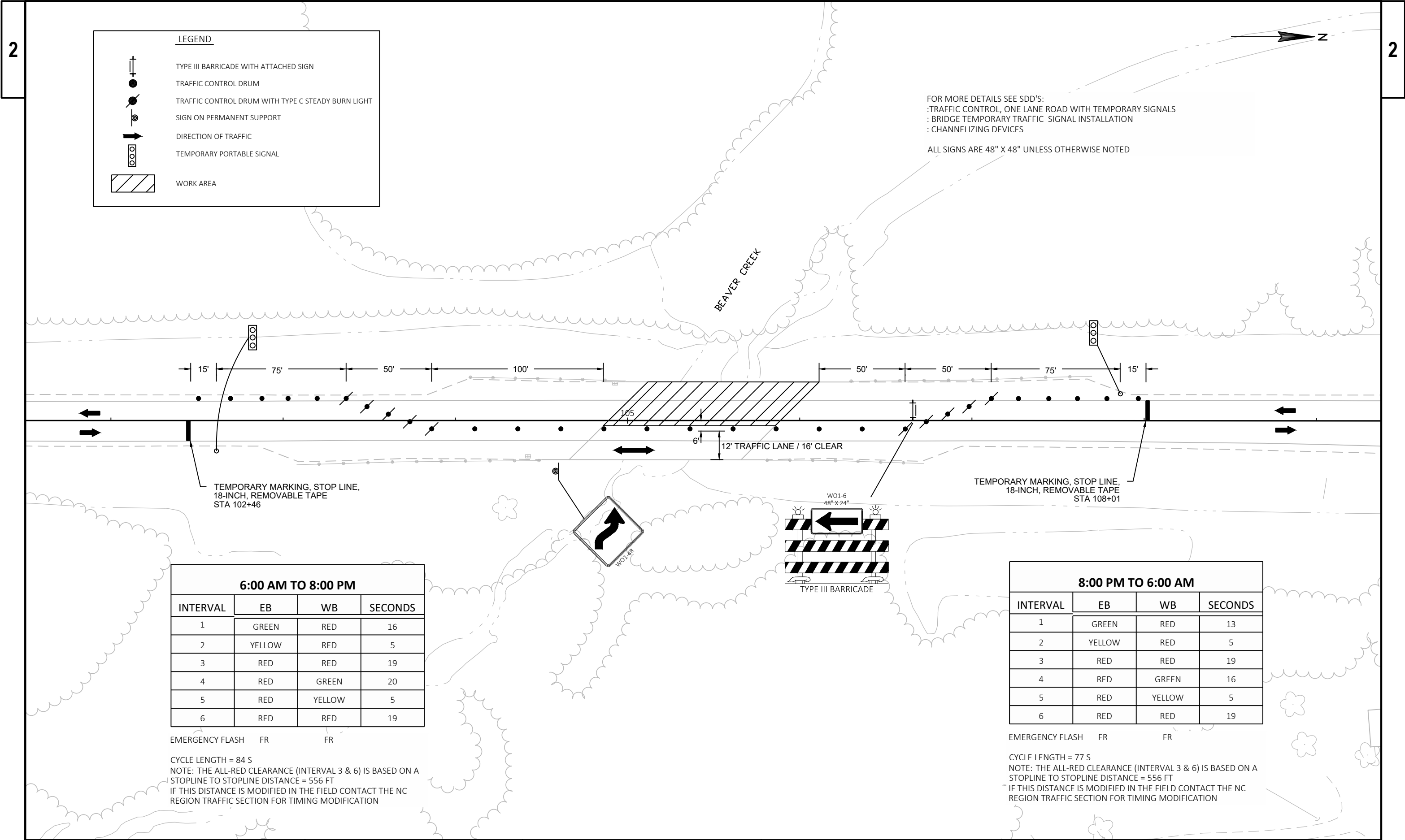
Notes:

1. POLYMER OVERLAY TO BE PLACED FULL WIDTH COVERING PAVEMENT AND SHOULDERS
2. MASK OFF EXISTING END JOINT AS DIRECTED BY ENGINEER









6:00 AM TO 8:00 PM			
INTERVAL	EB	WB	SECONDS
1	GREEN	RED	16
2	YELLOW	RED	5
3	RED	RED	19
4	RED	GREEN	20
5	RED	YELLOW	5
6	RED	RED	19

EMERGENCY FLASH FR FR

CYCLE LENGTH = 84 S

NOTE: THE ALL-RED CLEARANCE (INTERVAL 3 & 6) IS BASED ON A STOPLINE TO STOPLINE DISTANCE = 556 FT

IF THIS DISTANCE IS MODIFIED IN THE FIELD CONTACT THE NC REGION TRAFFIC SECTION FOR TIMING MODIFICATION

8:00 PM TO 6:00 AM			
INTERVAL	EB	WB	SECONDS
1	GREEN	RED	13
2	YELLOW	RED	5
3	RED	RED	19
4	RED	GREEN	16
5	RED	YELLOW	5
6	RED	RED	19

EMERGENCY FLASH FR FR

CYCLE LENGTH = 77 S

NOTE: THE ALL-RED CLEARANCE (INTERVAL 3 & 6) IS BASED ON A STOPLINE TO STOPLINE DISTANCE = 556 FT

IF THIS DISTANCE IS MODIFIED IN THE FIELD CONTACT THE NC REGION TRAFFIC SECTION FOR TIMING MODIFICATION

Estimate Of Quantities

1620-00-62					
Line	Item	Item Description	Unit	Total	Qty
0002	213.0100	Finishing Roadway (project) 01. 1620-00-62	EACH	1.000	1.000
0004	509.5100.S	Polymer Overlay	SY	1,200.000	1,200.000
0006	619.1000	Mobilization	EACH	1.000	1.000
0008	643.0300	Traffic Control Drums	DAY	320.000	320.000
0010	643.0420	Traffic Control Barricades Type III	DAY	8.000	8.000
0012	643.0715	Traffic Control Warning Lights Type C	DAY	80.000	80.000
0014	643.0900	Traffic Control Signs	DAY	128.000	128.000
0016	643.5000	Traffic Control	EACH	1.000	1.000
0018	646.1020	Marking Line Epoxy 4-Inch	LF	666.000	666.000
0020	646.9000	Marking Removal Line 4-Inch	LF	666.000	666.000
0022	649.0850	Temporary Marking Stop Line Removable Tape 18-Inch	LF	96.000	96.000
0024	661.0100	Temporary Traffic Signals for Bridges (structure) 01. B-71-182	LS	1.000	1.000
0026	661.0100	Temporary Traffic Signals for Bridges (structure) 02. B-71-183	LS	1.000	1.000
0028	ASP.1T0A	On-the-Job Training Apprentice at \$5.00/HR	HRS	150.000	150.000
0030	ASP.1T0G	On-the-Job Training Graduate at \$5.00/HR	HRS	300.000	300.000

POLYMER OVERLAY

STATION	LOCATION	509.5100.S SY	REMARKS
81+18.4 - 83+45.94	B-71-182	30	APPROACH WORK
83+45.94 - 83+51.94	B-71-182	30	APPROACH WORK
104+83.23 -104+89.23	B-71-183	30	APPROACH WORK
105+88.77 - 105+94.77	B-71-183	30	APPROACH WORK
TOTAL		118	

TEMPORARY TRAFFIC SIGNALS

661.0100 FOR BRIDGES (STRUCTURE)	
LOCATION	LS
B-71-182	1
B-71-183	1
TOTALS	2

TRAFFIC CONTROL

	STAGE DAYS	DRUMS QTY	643.0300 DRUMS DAYS	BARRICADES TYPE III QTY	643.0420 BARRICADES TYPE III DAYS	WARNING TYPE C LIGHTS QTY	643.0715 WARNING TYPE C LIGHTS DAYS	SIGNS QTY	643.0900 SIGNS DAYS	649.0850 TEMPORARY MARKING STOP LINE REMOVABLE TAPE 18 - INCH LF
B-71-182 STAGE 1	2	40	80	1	2	10	20	16	32	24
B-71-182 STAGE 2	2	40	80	1	2	10	20	16	32	24
B-71-183 STAGE 1	2	40	80	1	2	10	20	16	32	24
B-71-183 STAGE 2	2	40	80	1	2	10	20	16	32	24
TOTALS		160	320	4	8	40	80	64	128	96

PAVEMENT MARKING EPOXY

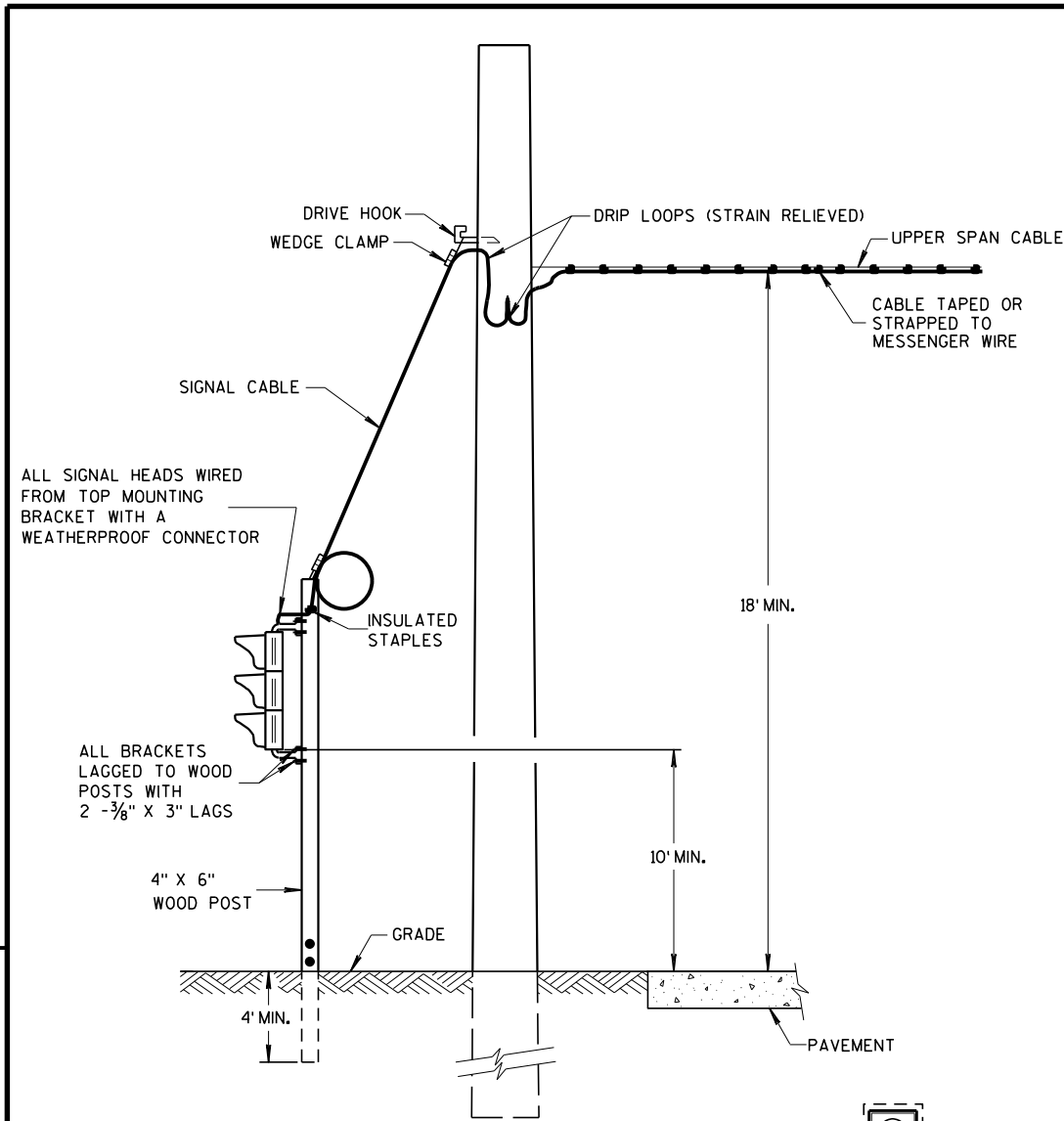
REMOVING PAVEMENT MARKINGS

646.9000 MARKING REMOVAL LINE 4-INCH LF	
LOCATION	LF
B-71-182	366
B-71-183	300
TOTALS	666

STATION - STATION	LOCATION	646.1020 4-INCH WHITE LF	646.1020 4-INCH YELLOW LF
82+24.4 - 83+45.94	RT, LT	244	
82+24.4 - 83+45.94	CL		122
104+89.23 - 105+88.77	RT, LT	200	
104+89.23 - 105+88.77	CL		100
SUB TOTALS		444	222
PROJECT TOTAL		666	

Standard Detail Drawing List

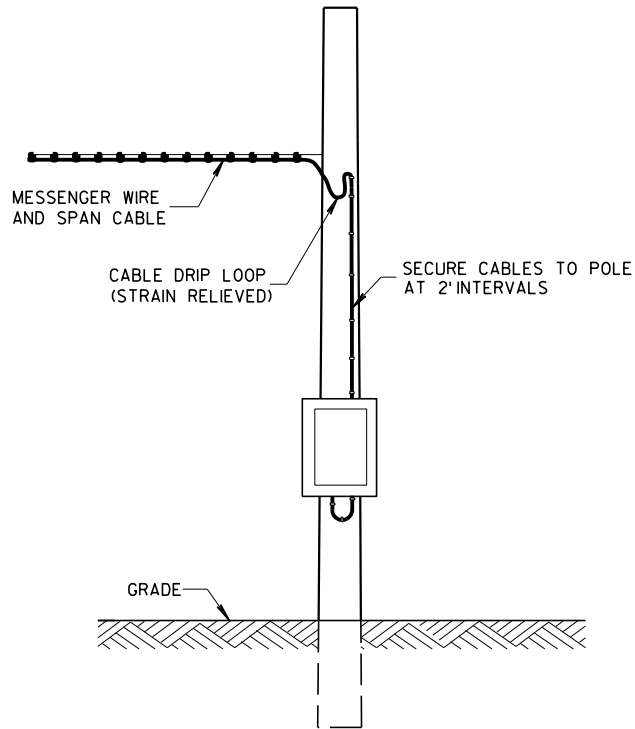
09G02-05A	BRIDGE TEMPORARY TRAFFIC SIGNAL INSTALLATION
09G02-05B	BRIDGE TEMPORARY TRAFFIC SIGNAL INSTALLATION
09G02-05C	BRIDGE TEMPORARY TRAFFIC SIGNAL INSTALLATION
15C11-07A	CHANNELIZING DEVICES FLEXIBLE TUBULAR MARKER POST
15C11-07B	CHANNELIZING DEVICES DRUMS, CONES, BARRICADES AND VERTICAL PANELS
15D38-02A	TEMPORARY TRAFFIC CONTROL SIGN MOUNTING
15D38-02B	ATTACHMENT OF SIGNS TO POSTS



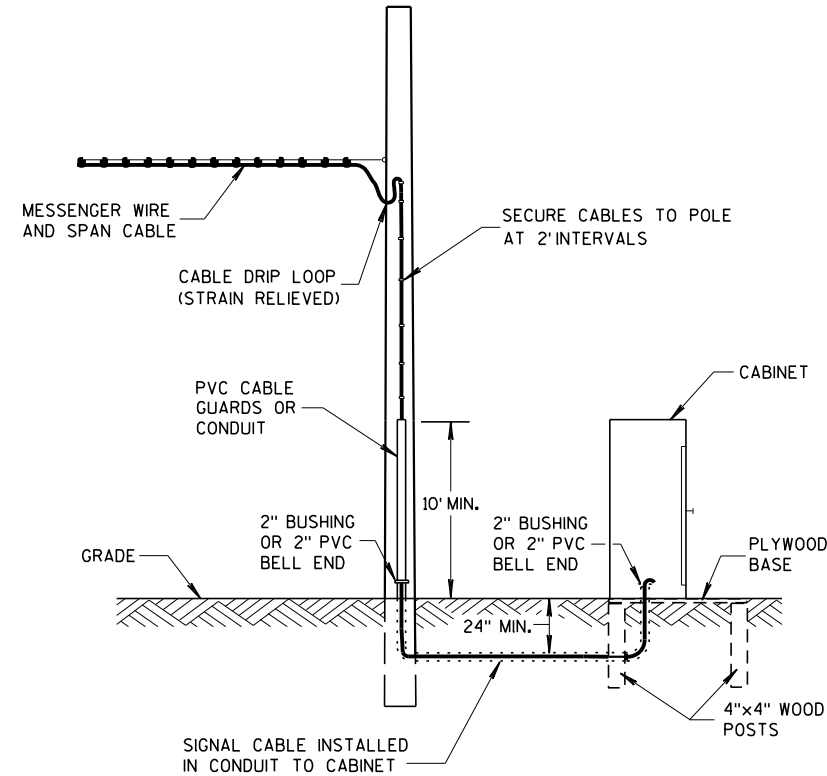
TYPICAL DROP TO TRAFFIC SIGNAL FACE

OFFSET DISTANCES FOR TEMPORARY NON-BREAKAWAY POLES	
SPEED LIMIT	OFFSET DISTANCE**
GREATER THAN 45 MPH	18 FT
45 MPH OR LESS	12 FT
45 MPH OR LESS W/ CURBS	2 FT
**NOTE: OFFSET MEASURED FROM OUTER EDGE OF OUTSIDE THRU LANE.	

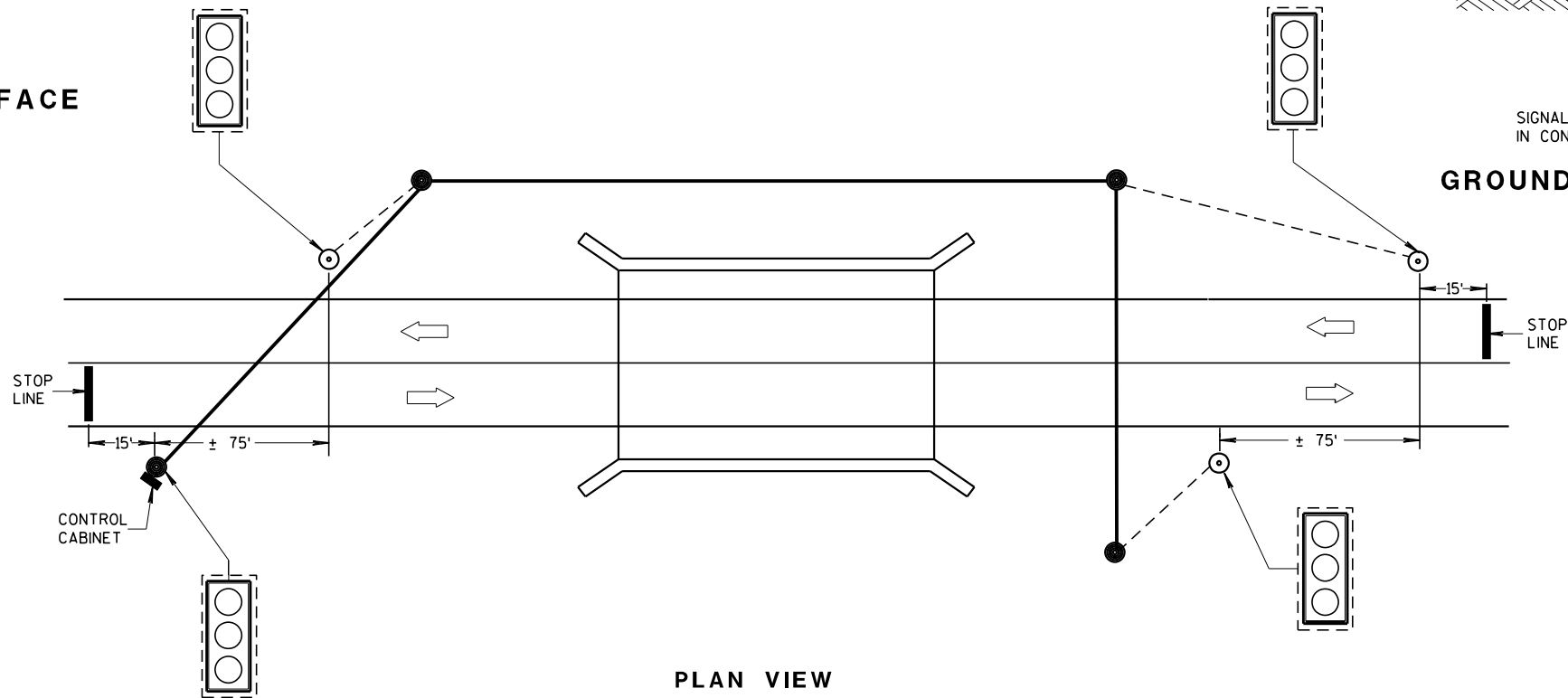
MINIMUM POLE LENGTHS	CLASS	MINIMUM BURIAL DEPTHS
25 FEET	V	5 FEET
30 FEET	V	6 FEET
35 FEET	IV	7 FEET
40 FEET	IV	8 FEET
45 FEET	IV	9 FEET



POLE MOUNT CABINET INSTALLATION



GROUND MOUNT CABINET INSTALLATION



PLAN VIEW
TYPICAL BRIDGE TEMPORARY TRAFFIC SIGNAL LOCATION

GENERAL NOTES

DETAILS OF CONSTRUCTION, MATERIALS AND WORKMANSHIP NOT SHOWN ON THIS DRAWING SHALL CONFORM TO THE PERTINENT REQUIREMENTS OF THE CONTRACT.

POLE MOUNTED TRAFFIC SIGNAL CONTROL CABINET MAYBE MOUNTED ON THE SERVICE POLE IF THE ELECTRICAL UTILITY ALLOWS THE INSTALLATION.

WHEN UTILITY POLES ARE USED TO SPAN THE TEMPORARY OVERHEAD CABLE, WRITTEN PERMISSION MUST BE OBTAINED FROM THE OWNER OF THE POLES AND GIVEN TO THE PROJECT MANAGER. ALL PERTINENT UTILITY AND CODE CLEARANCES SHALL BE MAINTAINED.

WOOD POLES (NONBREAKAWAY) SHALL BE NO CLOSER TO EDGE OF PAVEMENT THAN OFFSET DISTANCE CHART ALLOWS OR 4 FEET BEHIND PROTECTIVE BARRIER (BEAM GUARD, ETC.).

WOOD POSTS (BREAKAWAY) SHALL BE NO CLOSER THAN 2 FEET OUTSIDE OF SHOULDER.

VERTICAL CLEARANCE ETC. PER NEC.

TRAFFIC SIGNAL FACES SHALL BE TYPICALLY PLACED 12 FEET FROM EDGE OF PAVEMENT.

EACH TRAFFIC SIGNAL FACE SHALL HAVE A BACKPLATE.

SIGNING, PAVEMENT MARKING AND LANE CONTROL REQUIREMENTS SHALL CONFORM TO STANDARD DETAIL DRAWING 15 D 33.

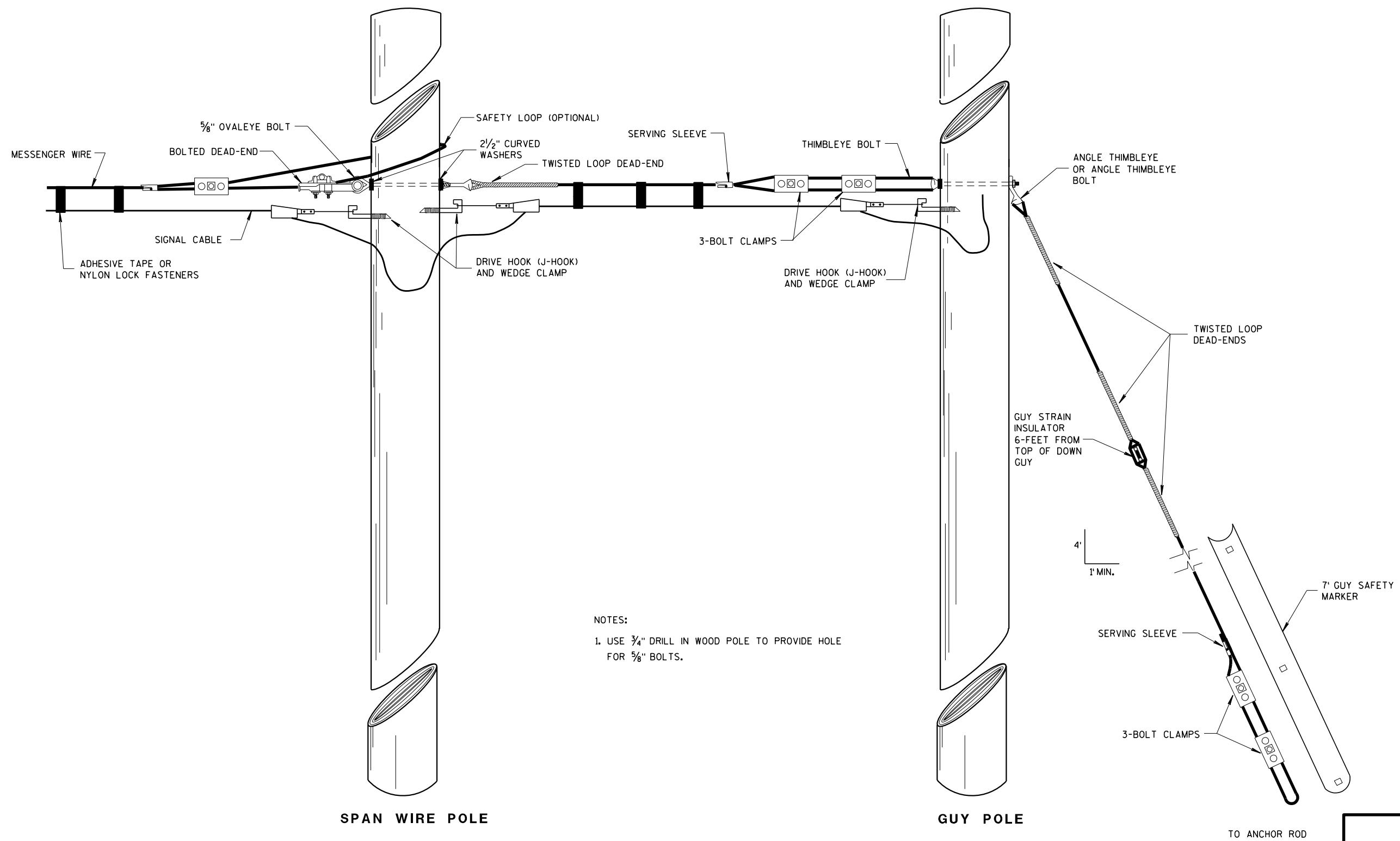
LEGEND

- WOOD POLE (NON-BREAKAWAY)
- WOOD POST (BREAKAWAY)
- SIGNAL CABLE
- SIGNAL CABLE W/MESSENGER
- LED TRAFFIC SIGNAL FACE WITH BACKPLATE
- 3'-12"
- DIRECTION OF TRAFFIC

BRIDGE TEMPORARY TRAFFIC SIGNAL INSTALLATION

STATE OF WISCONSIN
DEPARTMENT OF TRANSPORTATION

APPROVED
March 2018 /S/ Ahmet Demirbilek
DATE STATE ELECTRICAL ENGINEER
FHWA



NOTES:

1. USE 3/4" DRILL IN WOOD POLE TO PROVIDE HOLE FOR 5/8" BOLTS.

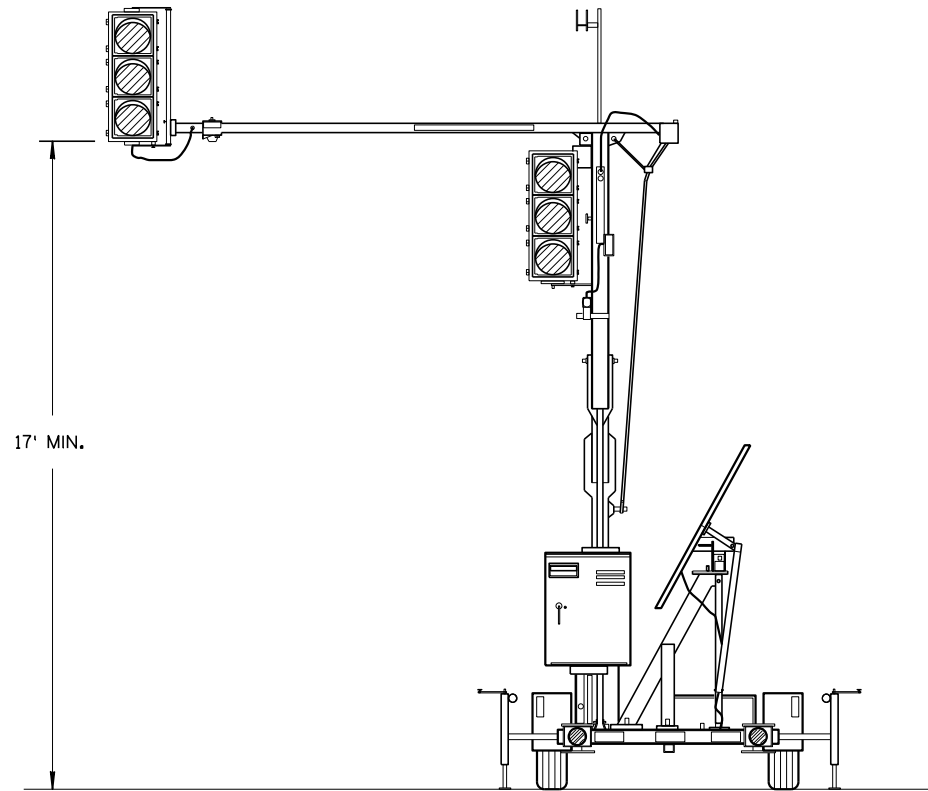
TYPICAL DEAD-ENDINGS OR GUYING

BRIDGE TEMPORARY
TRAFFIC SIGNAL INSTALLATIONSTATE OF WISCONSIN
DEPARTMENT OF TRANSPORTATION

APPROVED

March 2018
DATE/S/ Ahmet Demirelek
STATE ELECTRICAL ENGINEER

FHWA

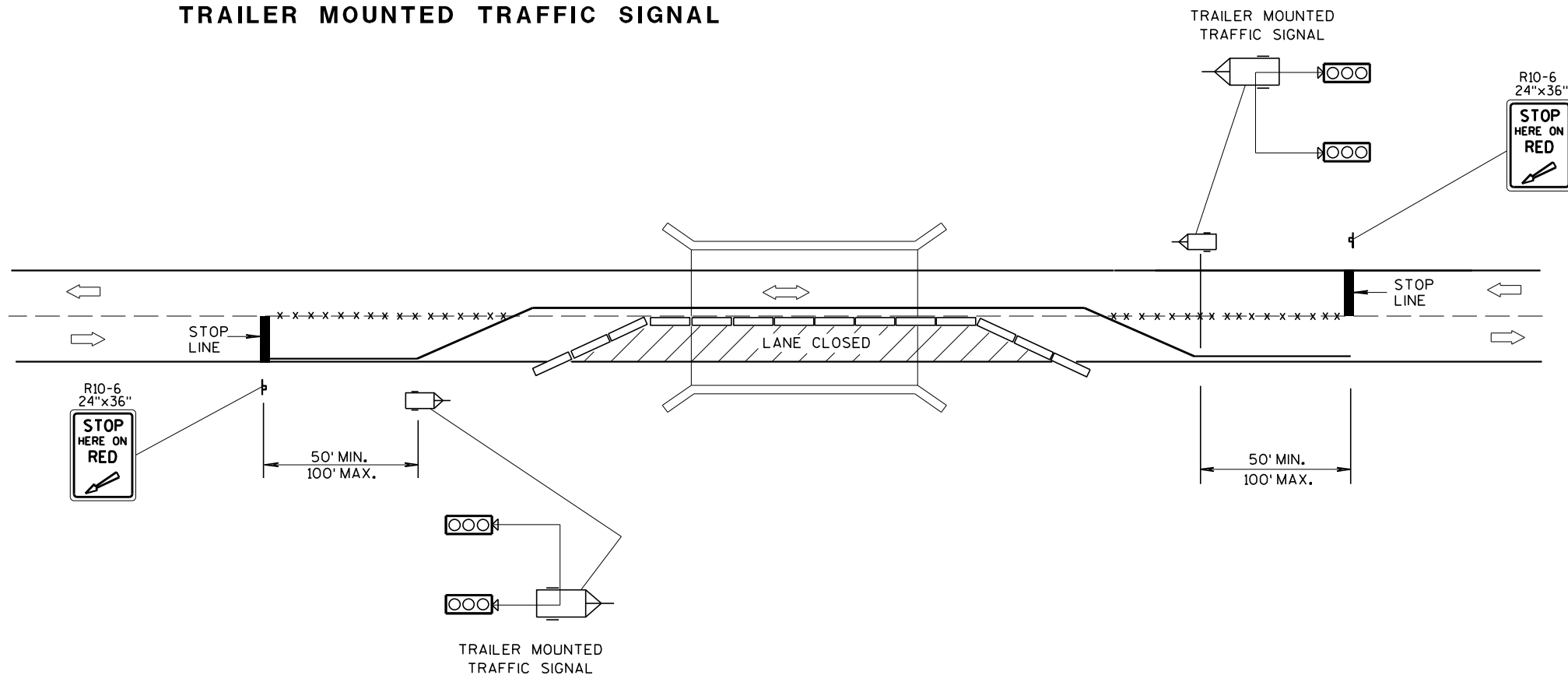


TRAILER MOUNTED TRAFFIC SIGNAL

GENERAL NOTES

DETAILS OF CONSTRUCTION, MATERIALS AND WORKMANSHIP NOT SHOWN ON THIS DRAWING SHALL CONFORM TO THE PERTINENT REQUIREMENTS OF THE CONTRACT.

SIGNING, PAVEMENT MARKING AND LANE CONTROL REQUIREMENTS SHALL CONFORM TO STANDARD DETAIL DRAWING 15 D 33.



TYPICAL TRAILER MOUNTED TRAFFIC SIGNAL LOCATION

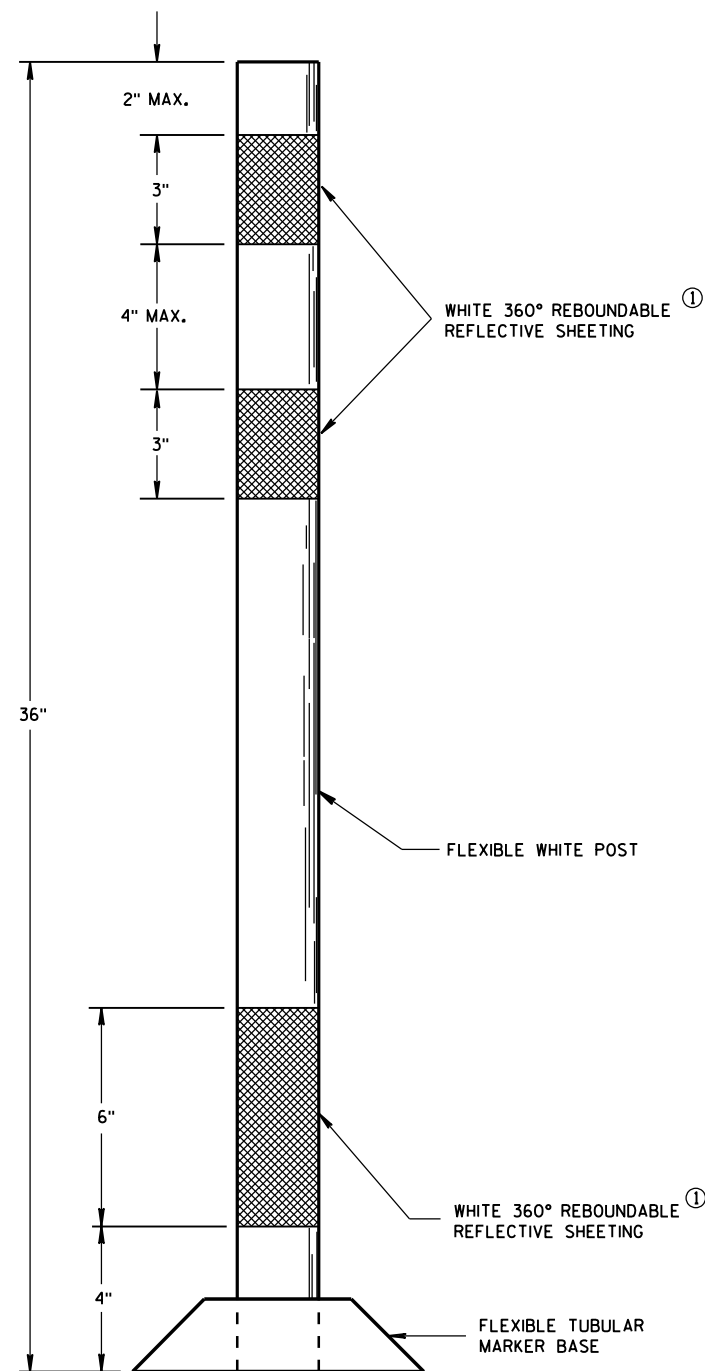
LEGEND

- POST MOUNTED SIGN
- REMOVING PAVEMENT MARKING
- TEMPORARY PRECAST CONCRETE BARRIER
- TRAILER MOUNTED TRAFFIC SIGNAL
- DIRECTION OF TRAFFIC FLOW

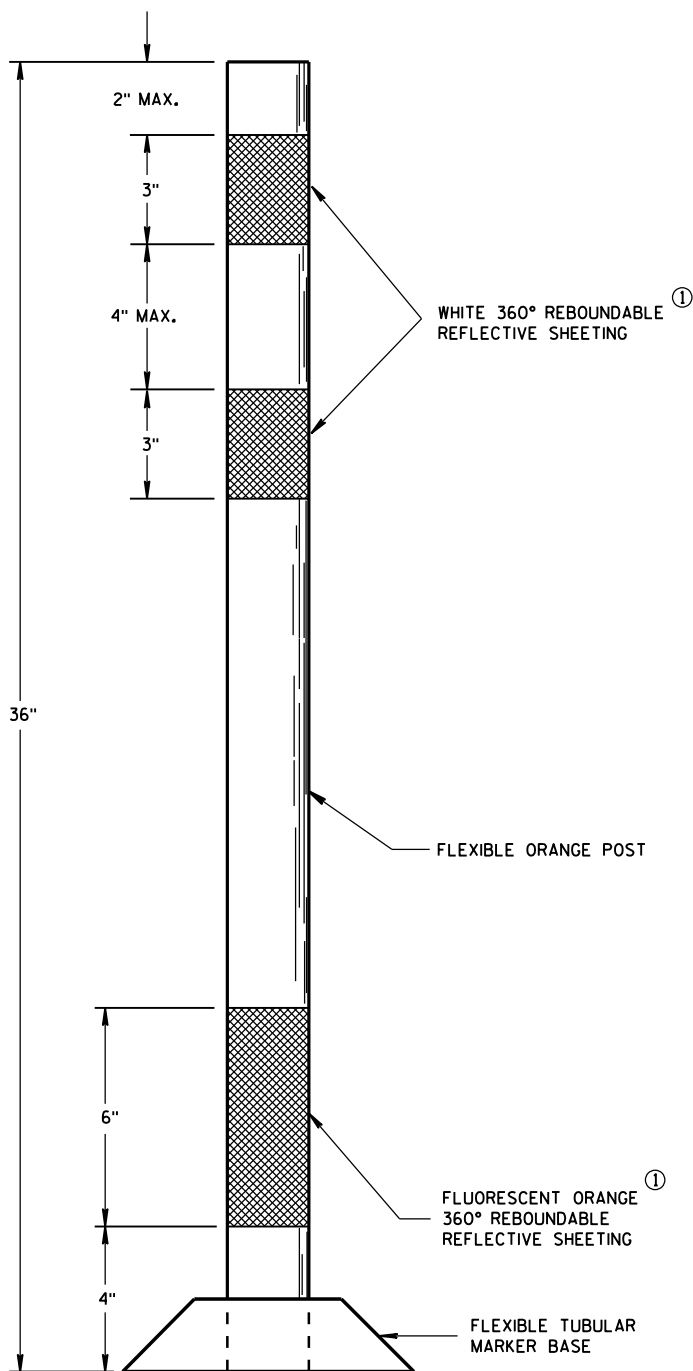
BRIDGE TEMPORARY TRAFFIC SIGNAL INSTALLATION

STATE OF WISCONSIN
DEPARTMENT OF TRANSPORTATION

APPROVED
March 2018 /S/ Ahmet Demirbilek
DATE STATE ELECTRICAL ENGINEER
FHWA



**FLEXIBLE
TUBULAR MARKER POST
PERMANENT CROSSOVER**



**FLEXIBLE
TUBULAR MARKER POST
WORK ZONE**

GENERAL NOTES

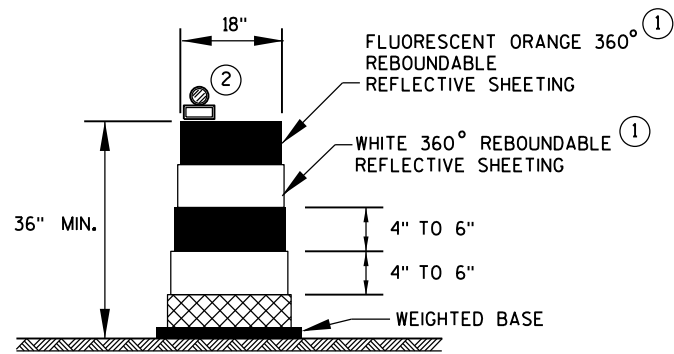
DETAILS OF CONSTRUCTION NOT SHOWN ON THIS DRAWING SHALL CONFORM TO THE PERTINENT REQUIREMENTS OF THE STANDARD SPECIFICATIONS AND APPLICABLE SPECIAL PROVISIONS.

SURFACE MOUNTED BASES SHALL BE FURNISHED IN ACCORDANCE WITH MANUFACTURERS RECOMMENDATIONS TO BE COMPATIBLE WITH FLEXIBLE TUBULAR MARKER POSTS TO A SIZE AND SHAPE THAT WILL PROVIDE A STABLE POST FOUNDATION WHEN SECURED TO THE PAVEMENT.

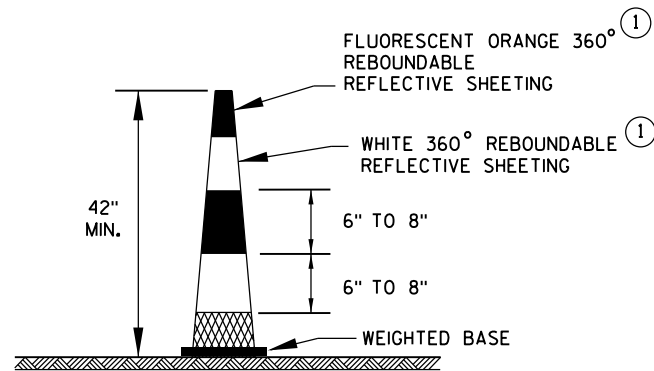
THE ASPHALTIC ADHESIVE OR BUTYL PAD FURNISHED SHALL BE IN ACCORDANCE WITH MANUFACTURERS RECOMMENDATIONS, UNLESS DIRECTED BY THE ENGINEER TO USE BOLTS.

- ① REFLECTIVE SHEETING SHALL FOLLOW THE REQUIREMENTS IN THE APPROVED PRODUCTS LISTING FOR SIGN SHEETING.

CHANNELIZING DEVICES FLEXIBLE TUBULAR MARKER POST	
STATE OF WISCONSIN DEPARTMENT OF TRANSPORTATION	
APPROVED June 2017 DATE	/S/ Andrew Heldtke WORK ZONE ENGINEER
FHWA	



DRUM

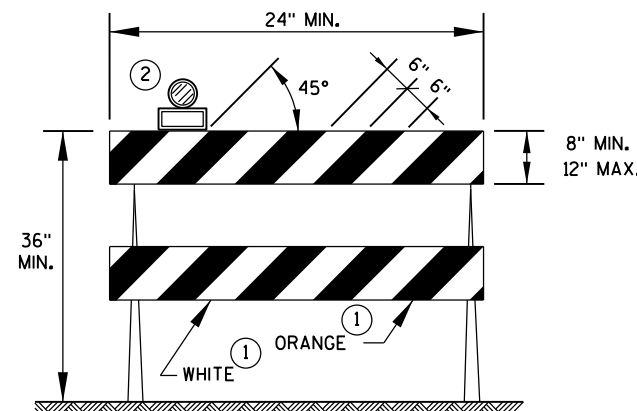


42" CONE

DO NOT USE IN TAPERS
1/2 SPACING OF DRUMS

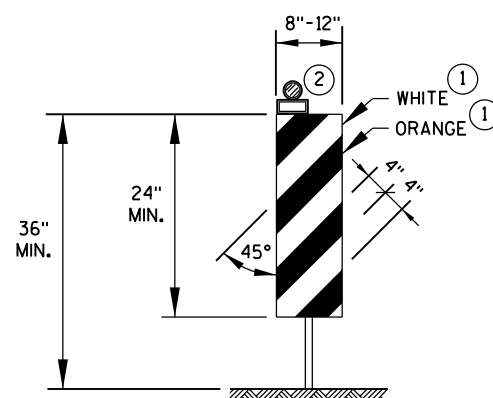
GENERAL NOTES

- ① REFLECTIVE SHEETING SHALL FOLLOW THE REQUIREMENTS IN THE APPROVED PRODUCTS LISTING FOR SIGN SHEETING.
- ② LOCATION OF WARNING LIGHTS WHEN SHOWN ON THE PLAN.



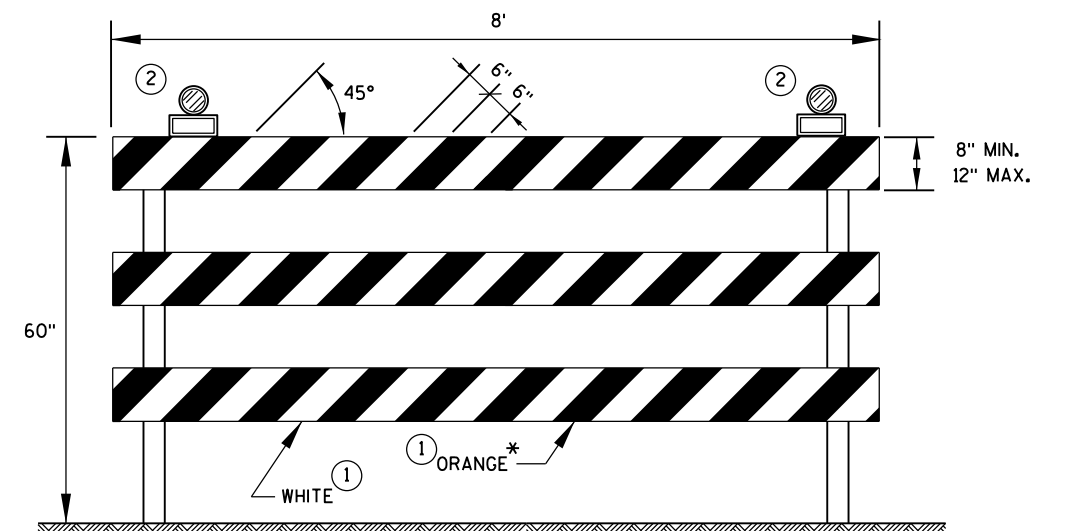
TYPE 2 BARRICADE

FOR RAILS LESS THAN 36" LONG, 4" WIDE STRIPES MAY BE USED.
ALL STRIPES SHALL SLOPE DOWNWARD TO THE TRAFFIC SIDE FOR CHANNELIZATION.



VERTICAL PANEL

THE STRIPES SHALL SLOPE DOWNWARD TO THE TRAFFIC SIDE FOR CHANNELIZATION.



TYPE 3 BARRICADE

IF SIGN MOUNTED, DO NOT COVER MORE THAN 50% OF THE TOP TWO RAILS OR 33% OF THE TOTAL AREA OF THE THREE RAILS.

* IF USED FOR A PERMANENT APPLICATION, USE RED SHEETING.

CHANNELIZING DEVICES
DRUMS, CONES, BARRICADES
AND VERTICAL PANELS

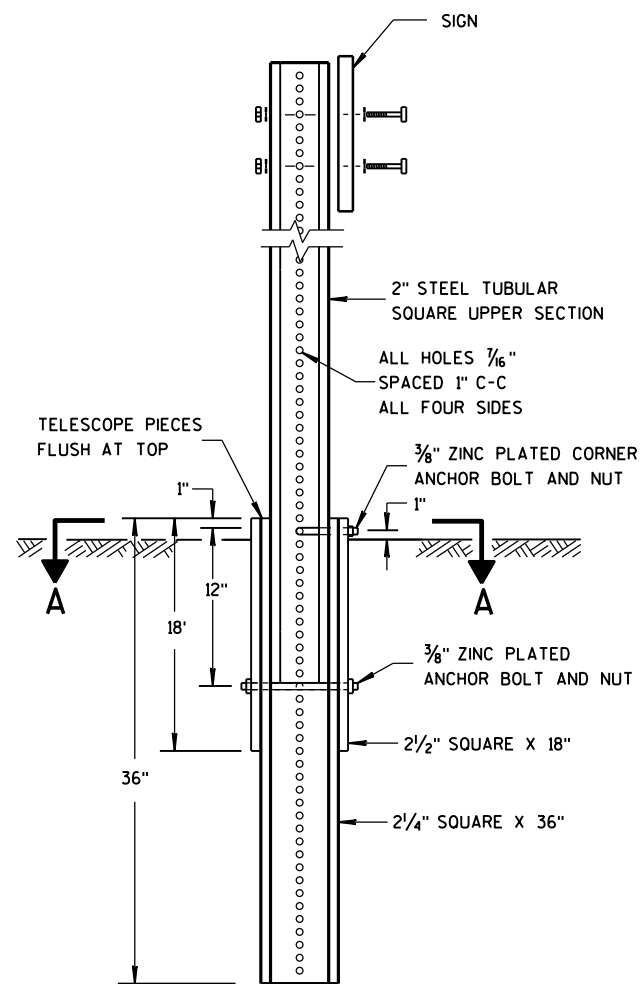
STATE OF WISCONSIN
DEPARTMENT OF TRANSPORTATION

APPROVED

June 2017
DATE

FHWA

/S/ Andrew Heidtke
WORK ZONE ENGINEER



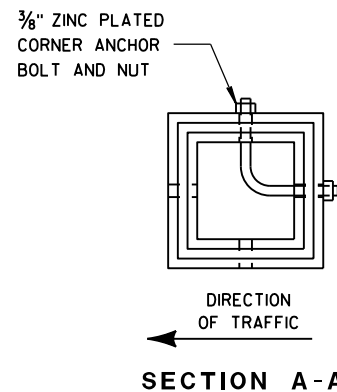
DETAIL OF TUBULAR
STEEL SIGN POST

TUBULAR STEEL POSTS

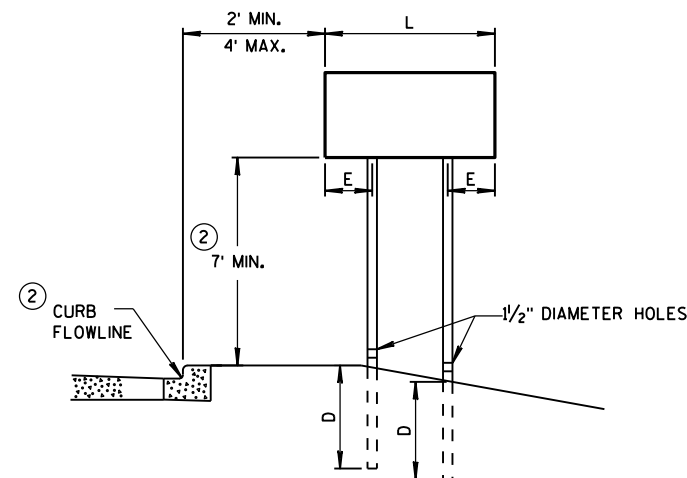
AREA OF SIGN INSTALLATION (SQ. FT.)	NUMBER OF REQUIRED TUBULAR STEEL POSTS
9 OR LESS	1
GREATER THAN 9 LESS THAN OR EQUAL TO 18	2
GREATER THAN 18 LESS THAN OR EQUAL TO 27	3

SIGNS WIDER THAN 3 FEET OR LARGER THAN 9 SQ. FT. SHALL
BE MOUNTED ON MULTIPLE POSTS (SEE ABOVE TABLE).

SIGNS LARGER THAN 27 SQ. FT. SHALL NOT BE MOUNTED
ON TUBULAR STEEL POSTS.



SECTION A-A

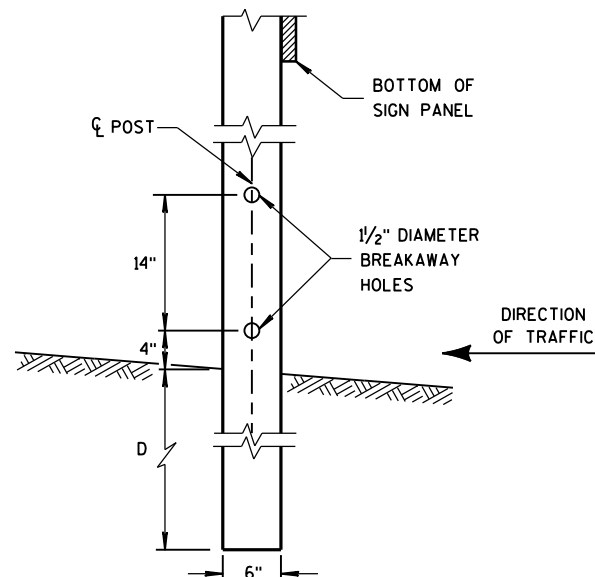


URBAN AREA

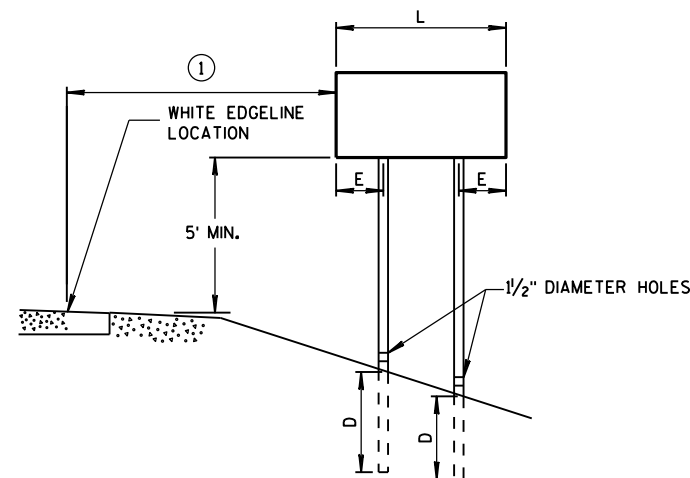
POST MOUNTING DETAIL FOR TEMPORARY TRAFFIC CONTROL FIXED MESSAGE SIGNS

WOOD POST
EMBEDMENT DEPTH

AREA OF SIGN INSTALLATION (SQ. FT.)	D (MIN)
20 OR LESS	4'
GREATER THAN 20	5'



4 "x6 " WOOD POST
MODIFICATION



RURAL AREA

4 " X 6 " WOOD POST

POST SPACING REQUIREMENTS		NUMBER OF WOOD POSTS REQUIRED
L	E	
48" OR LESS AND LESS THAN 20 SQ. FT.	-	1
LESS THAN 60"	12"	2
60" TO 120"	L/5	2
GREATER THAN 120" LESS THAN 168"	12"	3
168" AND GREATER	12"	4

SEE NOTE ③

GENERAL NOTES

- ① 6 FEET FROM THE EDGE OF PAVEMENT (EDGE LINE LOCATION) UNLESS OTHERWISE DIRECTED BY THE PROJECT ENGINEER. LATERAL OFFSET SHOULD BE ADJUSTED TO AVOID THE DITCH FLOWLINE.
- ② THE EXISTENCE OF CURB AND GUTTER DOES NOT IN ITSELF MANDATE THE VERTICAL CLEARANCE ILLUSTRATED. THAT HEIGHT IS TYPICALLY MEASURED WHERE THERE IS SIDEWALK ADJACENT TO THE ROADWAY OR PARKING IS PERMITTED. IN THE ABSENCE OF SIDEWALK, VERTICAL CLEARANCE IS MEASURED FROM THE TOP OF THE CURB. IF NO SIDEWALK AND NO PARKING, VERTICAL CLEARANCE MAY BE REDUCED TO 5 FOOT MINIMUM. OFFSET OF SIGNS IS MEASURED FROM THE CURB FLOWLINE.
- ③ FOR SIGNS REQUIRING 4 POSTS, SPACE INTERMEDIATE POSTS EVENLY.

TEMPORARY TRAFFIC CONTROL
SIGN MOUNTING

STATE OF WISCONSIN
DEPARTMENT OF TRANSPORTATION



NUTS, BOLTS AND LAGS USED FOR MOUNTING SIGNS SHALL HAVE HEXAGONAL HEADS AND SHALL BE EITHER:

- A. HOT DIP GALVANIZED IN ACCORDANCE WITH ASTM DESIGNATION: A 153, CLASS D, OR SC 3
- B. ELECTRO-GALVANIZED IN ACCORDANCE WITH ASTM DESIGNATION: B 633, TYPE III, SC 3

THREADS ON BOLTS AND NUTS SHALL BE MANUFACTURED WITH SUFFICIENT ALLOWANCE FOR THE CADMIUM PLATE OR GALVANIZED COATING TO PERMIT THE NUTS TO RUN FREELY ON THE BOLTS.

- WOOD POSTS (4" x 4" or 4" x 6")
- LAG SCREWS - 3/8" x 3"
 - MACHINE BOLTS - 5/16" x 6-1/2" OR 7" LENGTH W/ NUTS

- SQUARE STEEL POSTS (2" x 2")
- MACHINE BOLTS - 3/8" x 3-1/4" LENGTH W/ NUTS
 - RIVETS - 9/32" (6605-9-6) BULB-TITE, TRI-FOLD, ALUMINUM BODY/MANDREL O.D. FLANGE .720-.765 INCH, GRIP RANGE .042-.375 INCH

- WASHERS (ALL POSTS) -
- 1-1/4" O.D. x 3/8" I.D. x 1/16" STEEL
 - 1-1/4" O.D. x 3/8" I.D. x .080 NYLON FOR ALL TYPE H SIGNS

* TWO DIFFERENT FASTENING SYSTEMS ARE SHOWN FOR ILLUSTRATION PURPOSES. ON ANY INDIVIDUAL SIGN, EITHER ONE OR THE OTHER SYSTEM SHALL BE USED. ACTUAL NUMBER OF FASTENERS PER SIGN VARIES WITH THE SIGN AREA. FOR A SINGLE POST INSTALLATION, ALL SIGNS GREATER THAN 9 SQ. FT. REQUIRE THE USE OF 3 FASTENERS.

ATTACHMENT OF SIGNS TO POSTS	
STATE OF WISCONSIN DEPARTMENT OF TRANSPORTATION	
APPROVED June 2017 DATE	/S/ Andrew Heidtke WORK ZONE ENGINEER
FHWA	

DESIGN DATA

LIVE LOAD:
DESIGN LOADING: HL-93
INVENTORY RATING FACTOR: RF=1.07
OPERATING RATING FACTOR: RF=1.39
WISCONSIN STANDARD PERMIT VEHICLE (WIS.-SPV): 250 (KIPS)

GENERAL NOTES

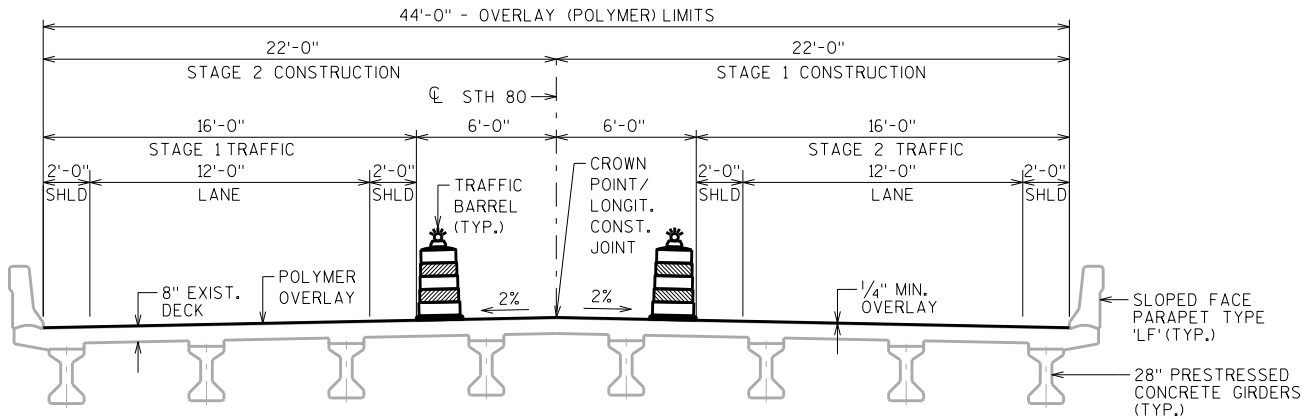
DRAWINGS SHALL NOT BE SCALED.
DIMENSIONS SHOWN ARE BASED ON THE ORIGINAL STRUCTURE PLANS.
DECK SURFACE PREPARATION IS INCLUDED IN THE BID ITEM "POLYMER OVERLAY".

TOTAL ESTIMATED QUANTITIES

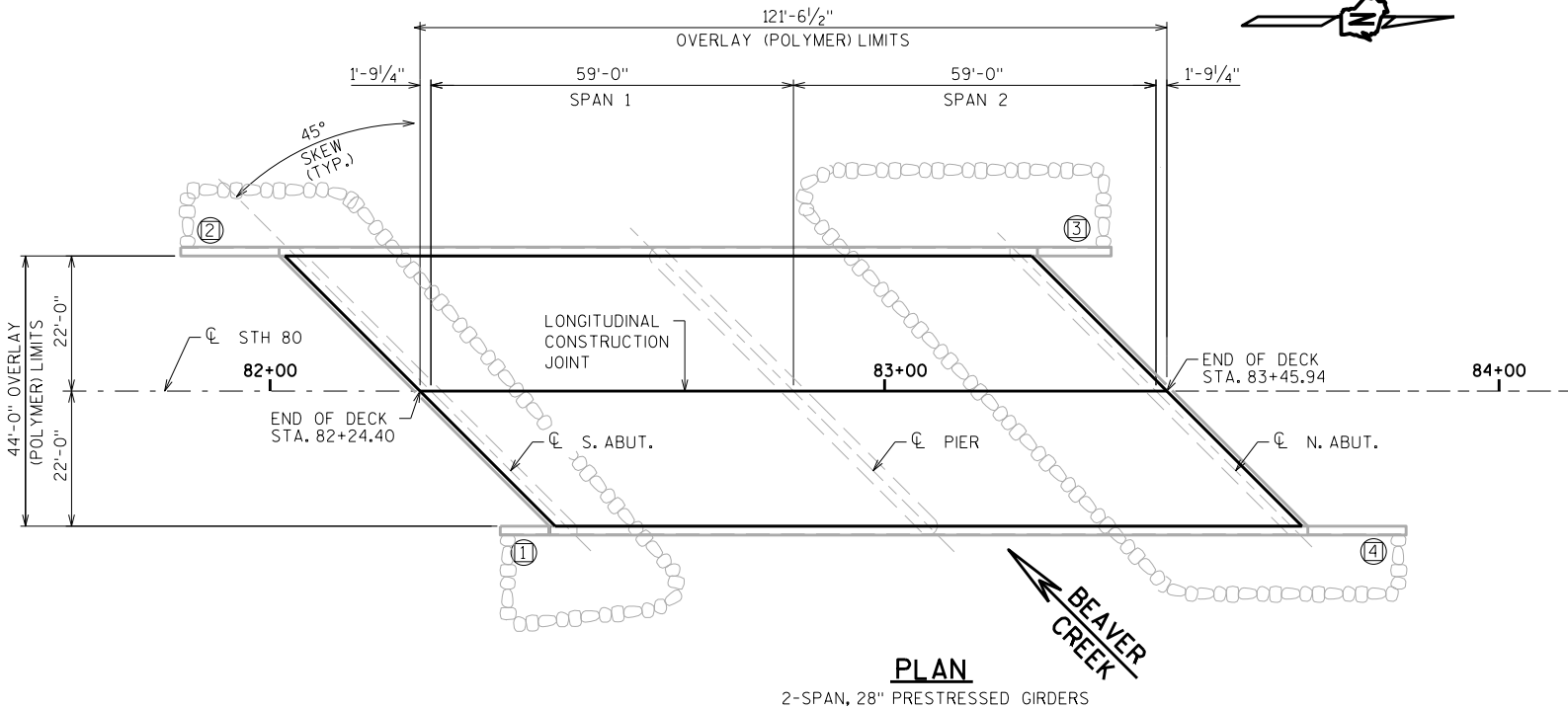
BID ITEM NUMBER	BID ITEMS	UNIT	TOTALS
509.5100.S	POLYMER OVERLAY	SY	595

TRAFFIC VOLUME

STH 80
ADT = 4,900 (2033)
R.D.S. = 55 M.P.H.



CROSS SECTION THRU ROADWAY
(LOOKING NORTH)



PLAN
2-SPAN, 28" PRESTRESSED GIRDERS

LIST OF DRAWINGS

1. POLYMER OVERLAY

STRUCTURE DESIGN CONTACTS:
MAXWELL KULICK (608) 261-6108
AARON BONK (608) 261-0261

NO.	DATE	REVISION	BY
<div><div><div><div><div><div></div><div>WISCONSIN</div></div><div><div></div><div>DEPARTMENT OF TRANSPORTATION</div></div></div><div><div><div>BUREAU OF</div><div>STRUCTURES</div></div><div>ACCEPTED <i>William C. Dehnen</i> 10/31/18</div><div>CHIEF STRUCTURES DESIGN ENGINEER DATE</div></div></div><div>STRUCTURE B-71-182</div><div>STH 80 OVER BEAVER CREEK</div><div>COUNTY WOOD TOWN RICHFIELD</div><div>DESIGN SPEC. REHABILITATION N/A</div><div>DESIGNED BY NAR DESIGNED CK'D. MJK DRAWN BY NAR PLANS CK'D. MJK</div><div>POLYMER OVERLAY</div><div>SHEET 1 OF 1</div></div></div> <div data-bbox="2567 1947 3017 1967" data-label="Page-Footer"><p>I.D. 1620-00-32A DATE: MAY 2018</p></div> <div data-bbox="189 1449 229 1657" data-label="Page-Footer"><p>8</p></div> <div data-bbox="239 1893 472 1919" data-label="Page-Footer"><p>INDICATES WING NUMBER</p></div> <div data-bbox="3027 1449 3067 1657" data-label="Page-Footer"><p>8</p></div> <div data-bbox="3048 1812 3067 1937" data-label="Page-Footer"><p>SCALE = 15.00</p></div>			

DESIGN DATA

LIVE LOAD:
DESIGN LOADING; HL-93
INVENTORY RATING FACTOR; RF=1.03
OPERATING RATING FACTOR; RF=1.38
WISCONSIN STANDARD PERMIT VEHICLE (WIS.-SPV): 250 (KIPS)

GENERAL NOTES

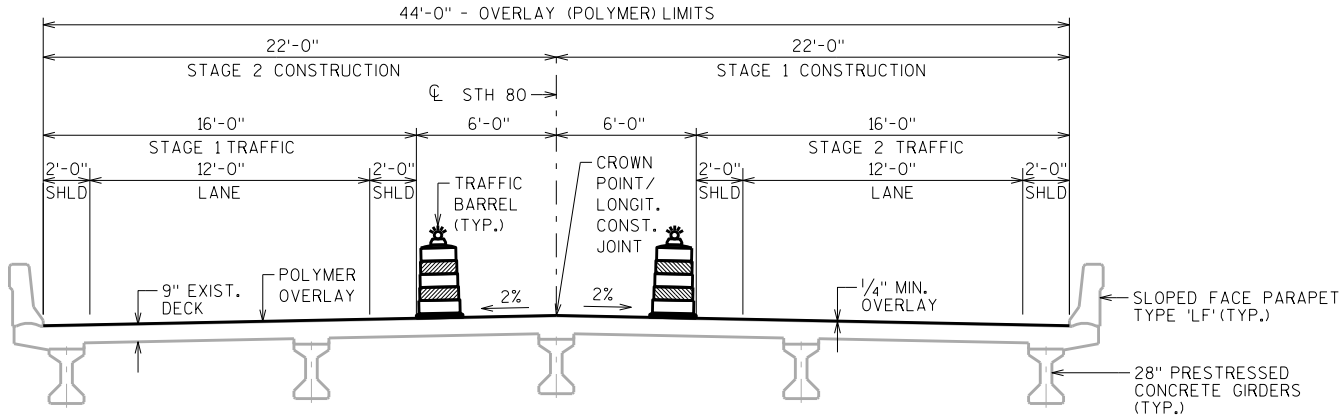
DRAWINGS SHALL NOT BE SCALED.
DIMENSIONS SHOWN ARE BASED ON THE ORIGINAL STRUCTURE PLANS.
DECK SURFACE PREPARATION IS INCLUDED IN THE BID ITEM "POLYMER OVERLAY".

TOTAL ESTIMATED QUANTITIES

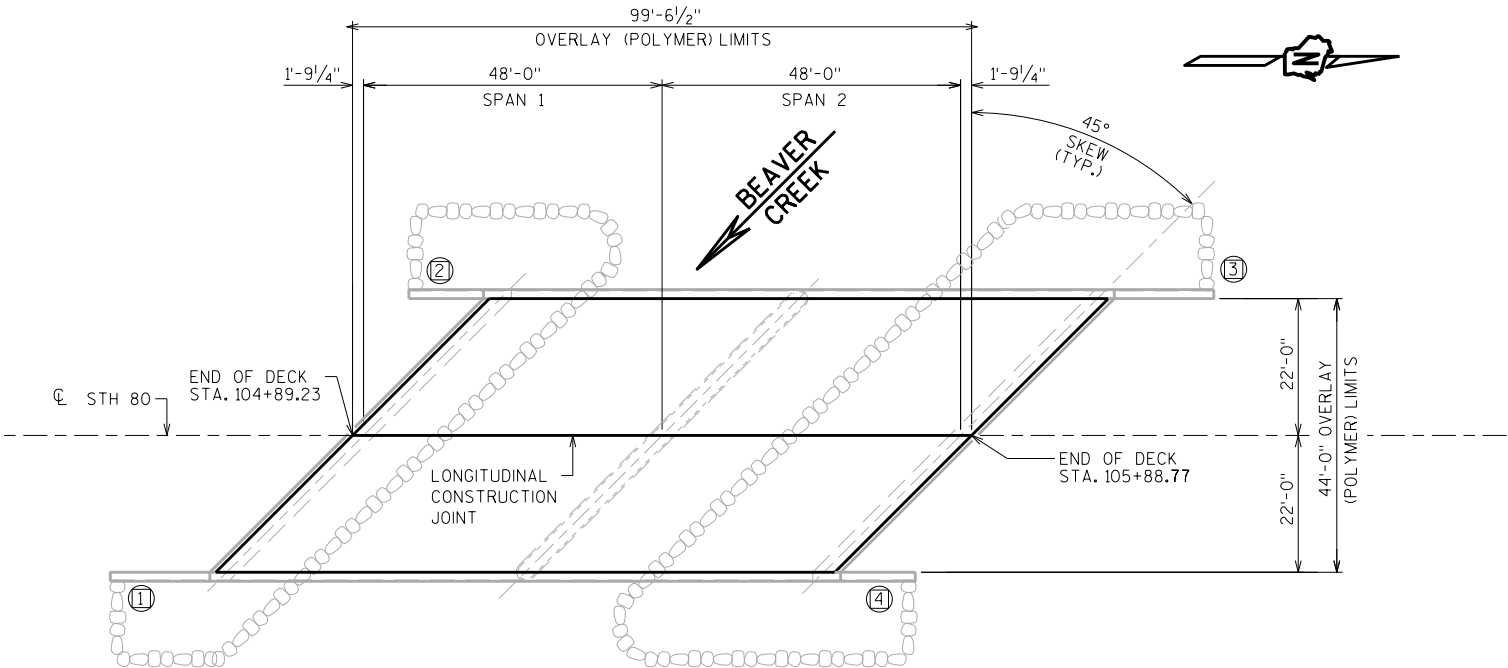
BID ITEM NUMBER	BID ITEMS	UNIT	TOTALS
509.5100.S	POLYMER OVERLAY	SY	487

TRAFFIC VOLUME

STH 80
ADT = 5,100 (2033)
R.D.S. = 55 M.P.H.



CROSS SECTION THRU ROADWAY
(LOOKING NORTH)




PLAN
2-SPAN, 28" PRESTRESSED GIRDERS

LIST OF DRAWINGS

1. POLYMER OVERLAY

STRUCTURE DESIGN CONTACTS:
MAXWELL KULICK (608) 261-6108
AARON BONK (608) 261-0261

NO.	DATE	REVISION	BY
<div><div><div><div><div><div></div><div>BUREAU OF STRUCTURES</div></div></div><div>ACCEPTED <i>William C. Dehman</i> 10/31/18</div><div>CHIEF STRUCTURES DESIGN ENGINEER DATE</div></div></div></div>			
STRUCTURE B-71-183			
STH 80 OVER BEAVER CREEK			
COUNTY	WOOD	TOWN	RICHFIELD
DESIGN SPEC. REHABILITATION N/A			
DESIGNED BY	NAR	DESIGNED CK'D.	MJK
DRAWN BY	NAR	PLANS CK'D.	MJK
POLYMER OVERLAY			SHEET 1 OF 1

Notes



Wisconsin Department of Transportation

Dedicated people creating transportation solutions
through innovation and exceptional service.

<http://www.dot.wisconsin.gov>