

GRE  
WITH: N/A

PROJECT ID:

1009-33-22

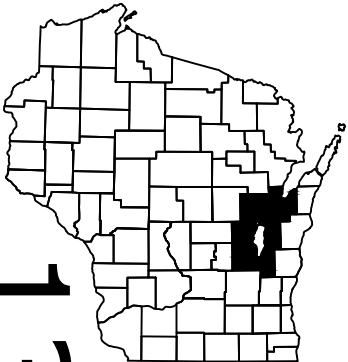
COUNTY:

NE REGION WIDE

FEBRUARY 2018  
ORDER OF SHEETS

Section No.	1	Title
Section No.	2	Typical Sections and Details
Section No.	3	Estimate of Quantities
Section No.	3	Miscellaneous Quantities
Section No.	4	Right of Way Plat
Section No.	5	Plan and Profile
Section No.	6	Standard Detail Drawings
Section No.	7	Sign Plates
Section No.	8	Structure Plans
Section No.	9	Computer Earthwork Data
Section No.	9	Cross Sections

TOTAL SHEETS = 30



CONVENTIONAL SYMBOLS

PLAN

CORPORATE LIMITS	
PROPERTY LINE	
LOT LINE	
LIMITED HIGHWAY EASEMENT	
EXISTING RIGHT OF WAY	
PROPOSED OR NEW R/W LINE	
SLOPE INTERCEPT	
REFERENCE LINE	
EXISTING CULVERT	
PROPOSED CULVERT (Box or Pipe)	
COMBUSTIBLE FLUIDS	
MARSH AREA	
WOODED OR SHRUB AREA	

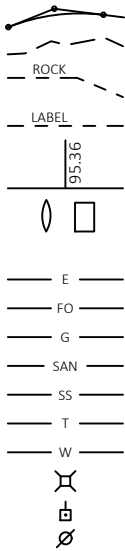
PROFILE

GRADE LINE
ORIGINAL GROUND
MARSH OR ROCK PROFILE (To be noted as such)
SPECIAL DITCH

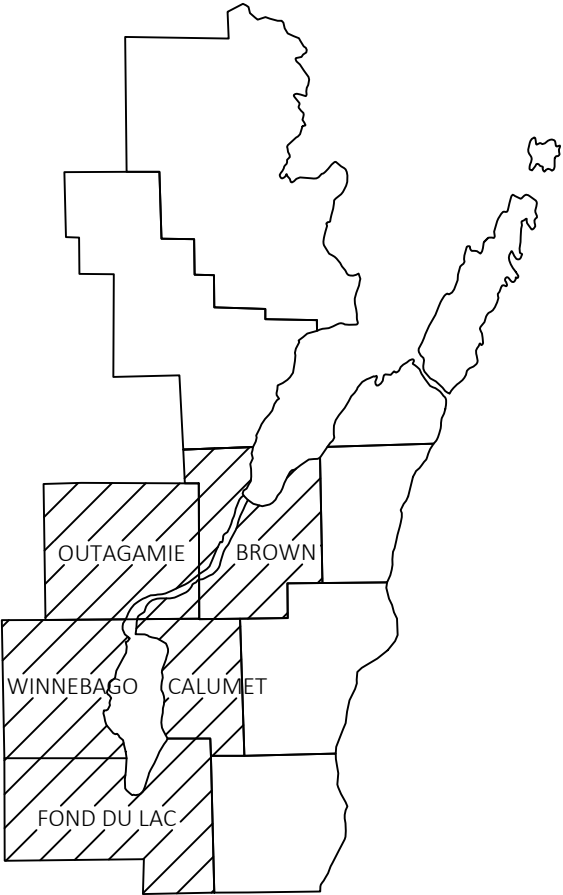
GRADE ELEVATION
CULVERT (Profile View)

UTILITIES

ELECTRIC
FIBER OPTIC
GAS
SANITARY SEWER
STORM SEWER
TELEPHONE
WATER
UTILITY PEDESTAL
POWER POLE
TELEPHONE POLE



STATE PROJECT NUMBER
1009-33-22



LAYOUT  
SCALE 0 30 MI

TOTAL NET LENGTH OF CENTERLINE = N/A

STATE OF WISCONSIN  
DEPARTMENT OF TRANSPORTATION  
PLAN OF PROPOSED IMPROVEMENT  
REGION WIDE DECK SEALING FY18  
VARIOUS ROUTES STH  
VARIOUS HWY  
NORTHEAST REGION WIDE

STATE PROJECT	FEDERAL PROJECT	
	PROJECT	CONTRACT
1009-33-22		

GENERAL NOTES

THERE ARE NO UTILITY ADJUSTMENTS NECESSARY TO ACCOMMODATE THE WORK UNDER THIS PROJECT.



Dial 811 or (800)242-8511  
www.DiggersHotline.com

STATE OF WISCONSIN DEPARTMENT OF TRANSPORTATION	
PREPARED BY	
Surveyor	
Designer	M. JANKE
Project Manager	J. ASHAUER
Regional Examiner	
Regional Supervisor	R. WAGNER
APPROVED FOR THE DEPARTMENT	
DATE: 8-1-2017	
E	

TRAFFIC CONTROL NOTES

ARROW BOARDS SHALL BE A MINIMUM TYPE B WITH A SIZE 60"X30".

VEHICLE-MOUNTED SIGNS SHALL BE MOUNTED IN A MANNER SUCH THAT THEY ARE NOT OBSTRUCTED BY EQUIPMENT OR SUPPLIES. SIGN LEGENDS ON VEHICLE-MOUNTED SIGNS SHALL BE COVERED OR TURNED FROM VEHICLE WHEN WORK IS NOT IN PROGRESS.

SHADOW AND WORK VEHICLES SHALL DISPLAY HIGH-INTENSITY ROTATING FLASHING OSCILLATING OR STROBE LIGHTS.

AN ARROW BOARD SHALL BE USED WHEN A FREEWAY LANE IS CLOSED. WHEN MORE THAN ONE FREEWAY LANE IS CLOSED A SEPARATE ARROW BOARD SHALL BE USED FOR EACH CLOSED LANE.

THE EXACT NUMBER LOCATION AND SPACING OF ALL SIGNS AND DEVICES SHALL BE ADJUSTED TO FIT FIELD CONDITIONS AS APPROVED BY THE ENGINEER.

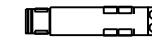
THE LANE CLOSURE IS TYPICAL FOR CLOSING LEFT LANE - REVERSE FOR CLOSING RIGHT LANE.

CONSIDER GEOMETRICS WHEN LOCATING SIGNS AND ARROW BOARDS SO THE DRIVER HAS A CLEAR VIEW OF THE ARROW BOARDS AND LANE CLOSURE VEHICLES FOR A MINIMUM OF 1500' IN FRONT OF SHADOW VEHICLE 1.

MULTIPLE PCMS MAY BE NECESSARY BASED ON ROADWAY GEOMETRICS AND LOCATION OF ENTRANCE RAMP OR SIDE ROADS.

LEGEND

PORTABLE CHANGEABLE MESSAGE BOARD



VEHICLE WITH HIGH-INTENSITY ROTATING FLASHING OSCILLATING OR STROBE LIGHTS



FLASHING ARROW BOARD



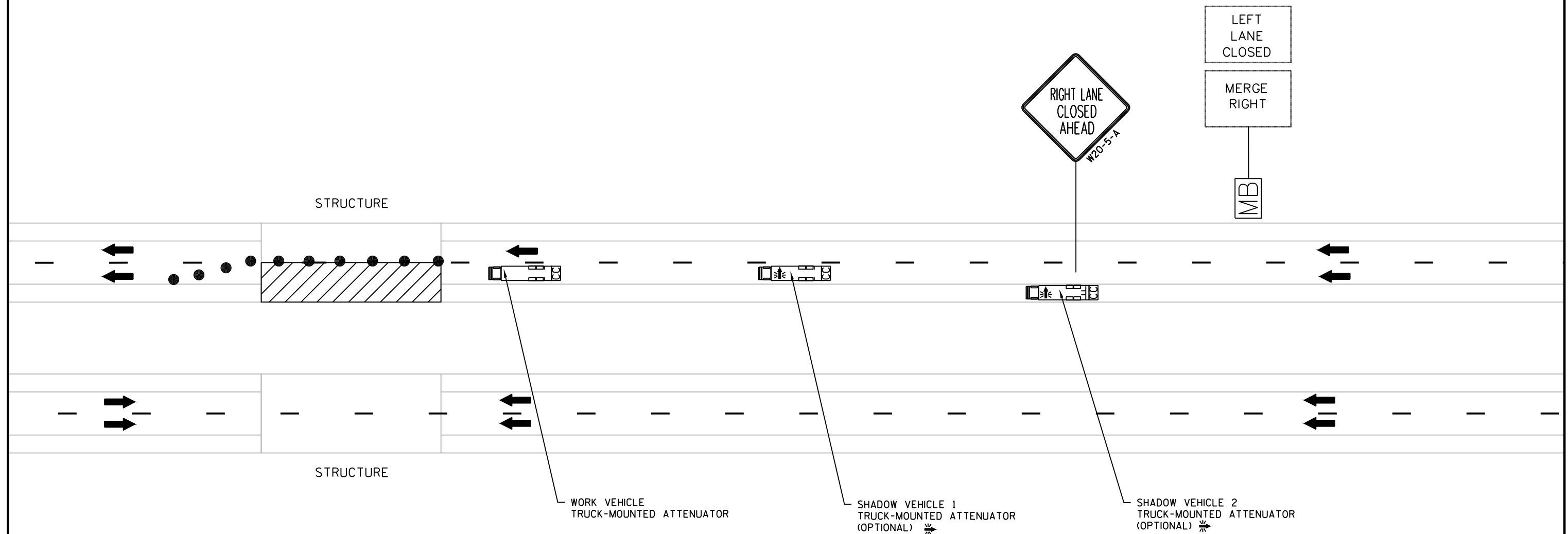
DRUM

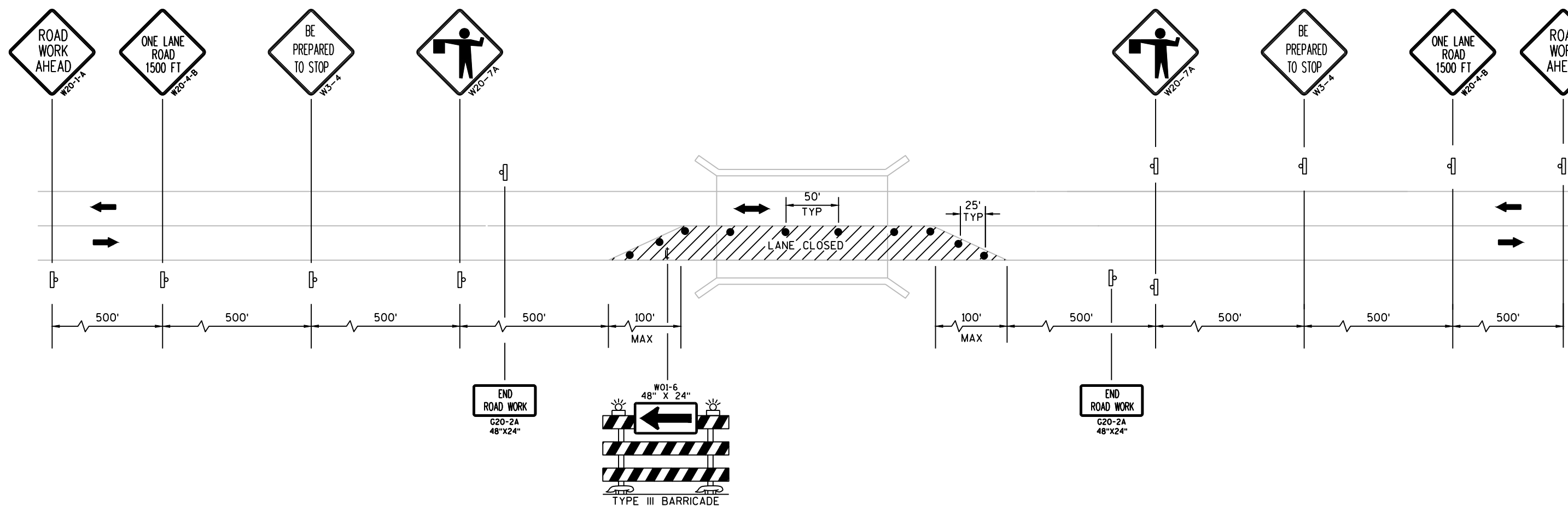


DIRECTION OF TRAFFIC



WORK AREA



TYPICAL LANE CLOSURETRAFFIC CONTROL NOTES

THE EXACT NUMBER LOCATION AND SPACING OF ALL SIGNS AND DEVICES SHALL BE ADJUSTED TO FIT FIELD CONDITIONS AS APPROVED BY THE ENGINEER.


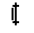



THE SPACING BETWEEN SIGNS SHOULD BE ADJUSTED TO NOT CONFLICT WITH AND TO PROVIDE A MINIMUM 200' (500' DESIRABLE) DISTANCE TO EXISTING SIGNS.

WARNING LIGHTS ARE NOT REQUIRED IF THE LANE CLOSURE IS A DAYTIME ONLY OPERATION.

IF THE HORIZONTAL ALIGNMENT IS SUCH THAT A CURVE MAY REQUIRE ADDITIONAL DELINEATION THE DRUM SPACING MAY BE DECREASED TO 50'.

ALL SIGNS ARE 48"X48" UNLESS OTHERWISE NOTED.

LEGEND

-  TEMPORARY MOUNTED SIGN
-  TYPE III BARRICADE WITH SIGN
-  DIRECTION OF TRAFFIC
-  DRUM
-  WORK AREA

PROJECT NO:1009-33-22

HWY:VARIOUS

COUNTY:NORTHEAST REGION

TRAFFIC CONTROL

SHEET

E

TRAFFIC CONTROL NOTES

THE EXACT NUMBER LOCATION AND SPACING OF ALL SIGNS AND TRAFFIC CONTROL DEVICES (AND THE LOCATION OF ALL THE FLAGGERS) SHALL BE ADJUSTED TO FIT FIELD CONDITIONS AS DIRECTED BY THE ENGINEER.

ALL SIGNING INAPPROPRIATE TO THE STATUS OF THE CONTROL ZONE INCLUDING PRE-EXISTING SIGNING IN THE VICINITY SHALL BE COVERED AS SPECIFIED IN THE PLANS AND/OR THE SPECIAL PROVISIONS OR AS DIRECTED BY THE ENGINEER.

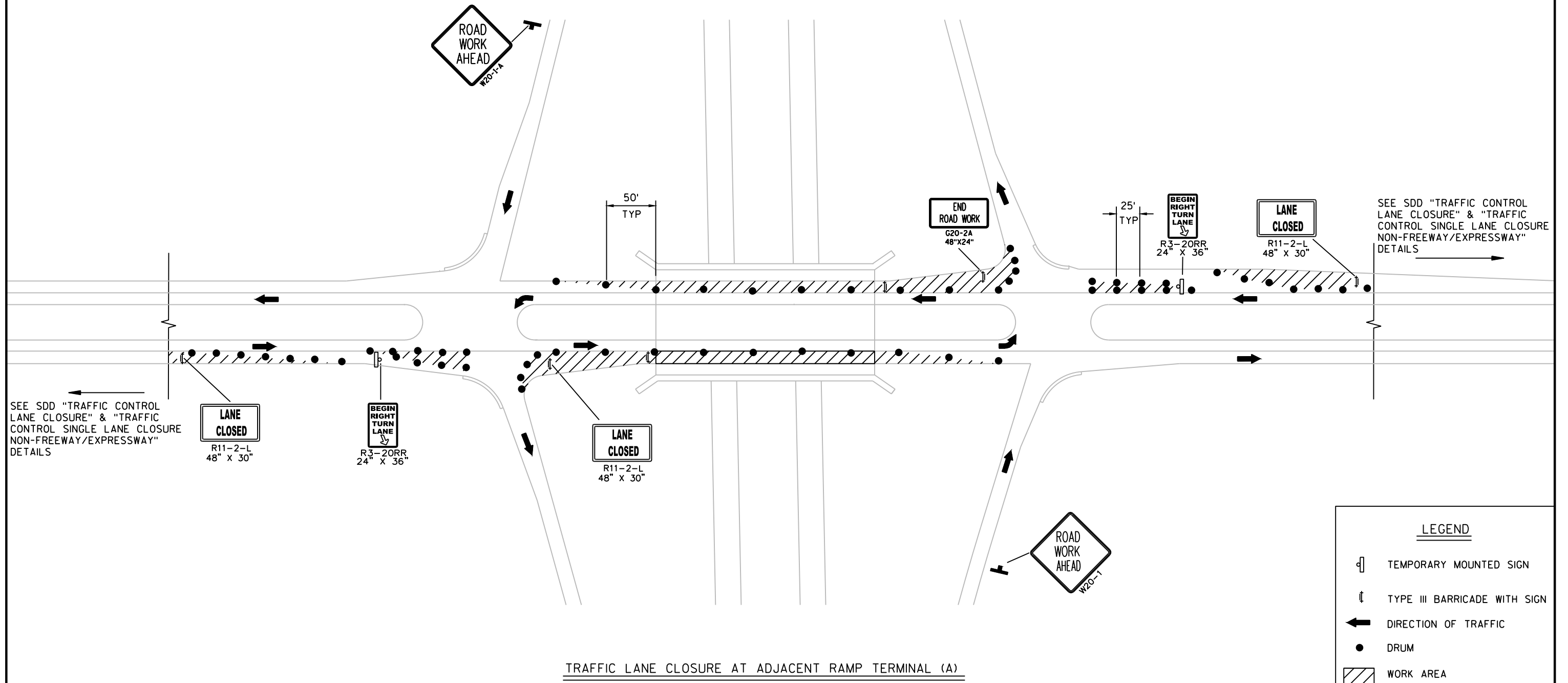
ALL "WO" SIGNS ARE THE SAME AS "W" SIGNS EXCEPT THE BACKGROUND IS ORANGE.

THE SPACING BETWEEN SIGNS SHOULD BE ADJUSTED TO NOT CONFLICT WITH EXISTING SIGNS.

CONSIDER GEOMETRICS WHEN LOCATING SIGNS AND ARROW BOARDS SO THE DRIVER HAS A CLEAR VIEW OF THE ARROW BOARD AND LANE CLOSURE DRUMS.

ADJUSTMENTS IN BUFFER SPACE SHOULD BE INCORPORATED WHEN THE LANE CLOSURE OCCURS NEAR AN INTERCHANGE EXIT OR ENTRANCE RAMP. THE LANE CLOSURE MUST TAKE PLACE FAR ENOUGH IN ADVANCE OF AN EXIT OR ENTRANCE RAMP TO ALLOW FOR ADEQUATE BUFFER SPACE. THE MINIMUM LENGTH OF THE BUFFER SPACE BEFORE AN EXIT SHOULD BE  $\frac{1}{2}$  THE LENGTH OF THE TRANSITION AREA.

ALL SIGNS ARE 48"X48" UNLESS OTHERWISE NOTED.



TRAFFIC CONTROL NOTES

THE EXACT NUMBER LOCATION AND SPACING OF ALL SIGNS AND TRAFFIC CONTROL DEVICES (AND THE LOCATION OF ALL THE FLAGGERS) SHALL BE ADJUSTED TO FIT FIELD CONDITIONS AS DIRECTED BY THE ENGINEER.

ALL SIGNING INAPPROPRIATE TO THE STATUS OF THE CONTROL ZONE INCLUDING PRE-EXISTING SIGNING IN THE VICINITY SHALL BE COVERED AS SPECIFIED IN THE PLANS AND/OR THE SPECIAL PROVISIONS OR AS DIRECTED BY THE ENGINEER.

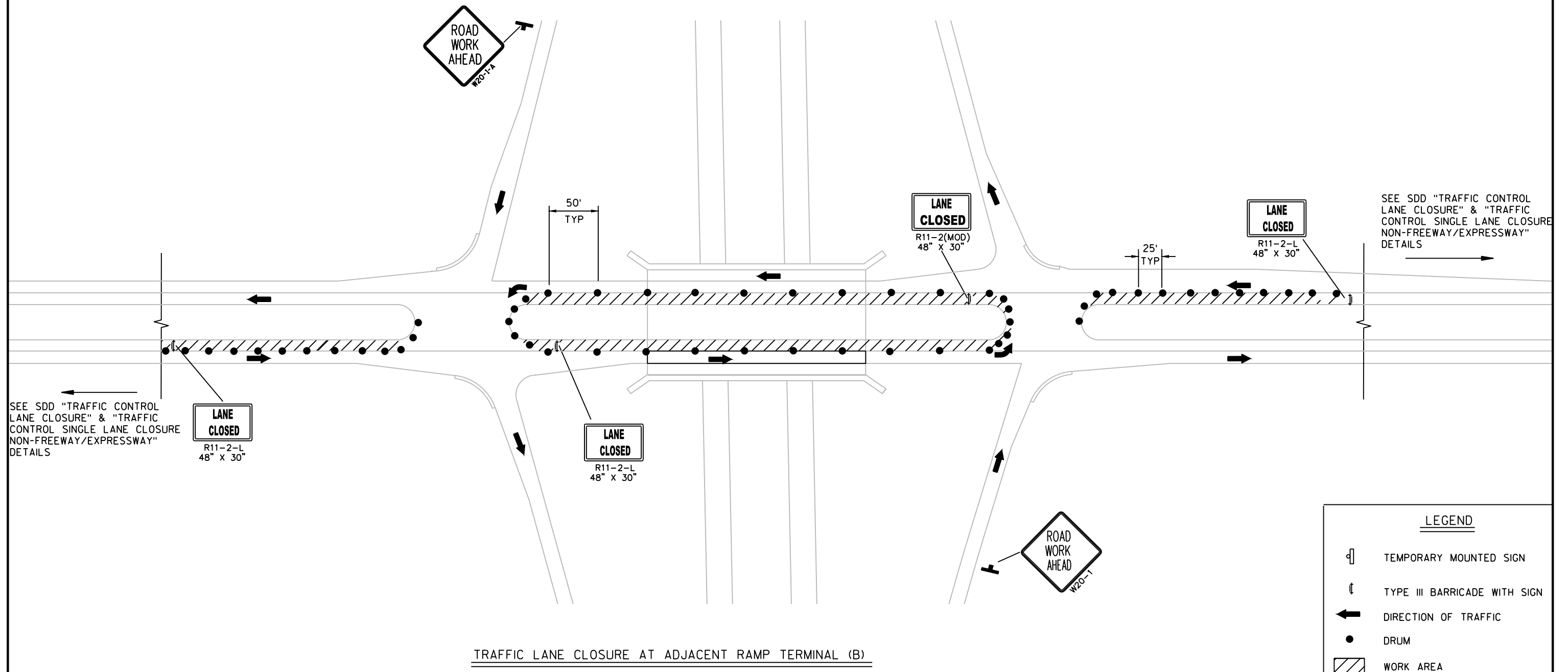
ALL "WO" SIGNS ARE THE SAME AS "W" SIGNS EXCEPT THE BACKGROUND IS ORANGE.

THE SPACING BETWEEN SIGNS SHOULD BE ADJUSTED TO NOT CONFLICT WITH EXISTING SIGNS.

CONSIDER GEOMETRICS WHEN LOCATING SIGNS AND ARROW BOARDS SO THE DRIVER HAS A CLEAR VIEW OF THE ARROW BOARD AND LANE CLOSURE DRUMS.

ADJUSTMENTS IN BUFFER SPACE SHOULD BE INCORPORATED WHEN THE LANE CLOSURE OCCURS NEAR AN INTERCHANGE EXIT OR ENTRANCE RAMP. THE LANE CLOSURE MUST TAKE PLACE FAR ENOUGH IN ADVANCE OF AN EXIT OR ENTRANCE RAMP TO ALLOW FOR ADEQUATE BUFFER SPACE. THE MINIMUM LENGTH OF THE BUFFER SPACE BEFORE AN EXIT SHOULD BE  $\frac{1}{2}$  THE LENGTH OF THE TRANSITION AREA.

ALL SIGNS ARE 48"X48" UNLESS OTHERWISE NOTED.



## LEGEND

- TEMPORARY MOUNTED SIGN  
TYPE III BARRICADE WITH SIGN  
DIRECTION OF TRAFFIC  
DRUM  
WORK AREA

SEE SDD "TRAFFIC CONTROL  
LANE CLOSURE" DETAIL

SEE SDD "TRAFFIC CONTROL  
LANE CLOSURE" DETAIL

## STAGE A

## STAGE B

## TRAFFIC CONTROL NOTES

THE EXACT NUMBER LOCATION AND SPACING OF ALL SIGNS AND TRAFFIC CONTROL DEVICES (AND THE LOCATION OF ALL THE FLAGGERS) SHALL BE ADJUSTED TO FIT FIELD CONDITIONS AS DIRECTED BY THE ENGINEER.

ALL SIGNING INAPPROPRIATE TO THE STATUS OF THE CONTROL ZONE INCLUDING PRE-EXISTING SIGNING IN THE VICINITY SHALL BE COVERED AS SPECIFIED IN THE PLANS AND/OR THE SPECIAL PROVISIONS OR AS DIRECTED BY THE ENGINEER.

ALL "WO" SIGNS ARE THE SAME AS "W" SIGNS EXCEPT THE BACKGROUND IS ORANGE.

THE SPACING BETWEEN SIGNS SHOULD BE ADJUSTED TO NOT CONFLICT WITH EXISTING SIGNS.

CONSIDER GEOMETRICS WHEN LOCATING SIGNS AND ARROW BOARDS SO THE DRIVER HAS A CLEAR VIEW OF THE ARROW BOARD AND LANE CLOSURE DRUMS.

ADJUSTMENTS IN BUFFER SPACE SHOULD BE INCORPORATED WHEN THE LANE CLOSURE OCCURS NEAR AN INTERCHANGE EXIT OR ENTRANCE RAMP. THE LANE CLOSURE MUST TAKE PLACE FAR ENOUGH IN ADVANCE OF AN EXIT OR ENTRANCE RAMP TO ALLOW FOR ADEQUATE BUFFER SPACE. THE MINIMUM LENGTH OF THE BUFFER SPACE BEFORE AN EXIT SHOULD BE  $\frac{1}{2}$  THE LENGTH OF THE TRANSITION AREA.

ALL SIGNS ARE 48"X48" UNLESS OTHERWISE NOTED.

## TRAFFIC LANE CLOSURE AT ADJACENT ENTRANCE RAMP

PROJECT NO:1009-33-22

HWY:VARIOUS

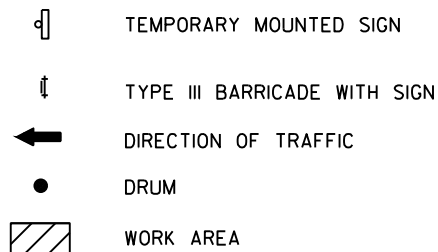
COUNTY:NORTHEAST REGION

TRAFFIC CONTROL

SHEET

E

## LEGEND



## TRAFFIC CONTROL NOTES

THE EXACT NUMBER LOCATION AND SPACING OF ALL SIGNS AND TRAFFIC CONTROL DEVICES (AND THE LOCATION OF ALL THE FLAGGERS) SHALL BE ADJUSTED TO FIT FIELD CONDITIONS AS DIRECTED BY THE ENGINEER.

ALL SIGNING INAPPROPRIATE TO THE STATUS OF THE CONTROL ZONE INCLUDING PRE-EXISTING SIGNING IN THE VICINITY SHALL BE COVERED AS SPECIFIED IN THE PLANS AND/OR THE SPECIAL PROVISIONS OR AS DIRECTED BY THE ENGINEER.

ALL "WO" SIGNS ARE THE SAME AS "W" SIGNS EXCEPT THE BACKGROUND IS ORANGE.

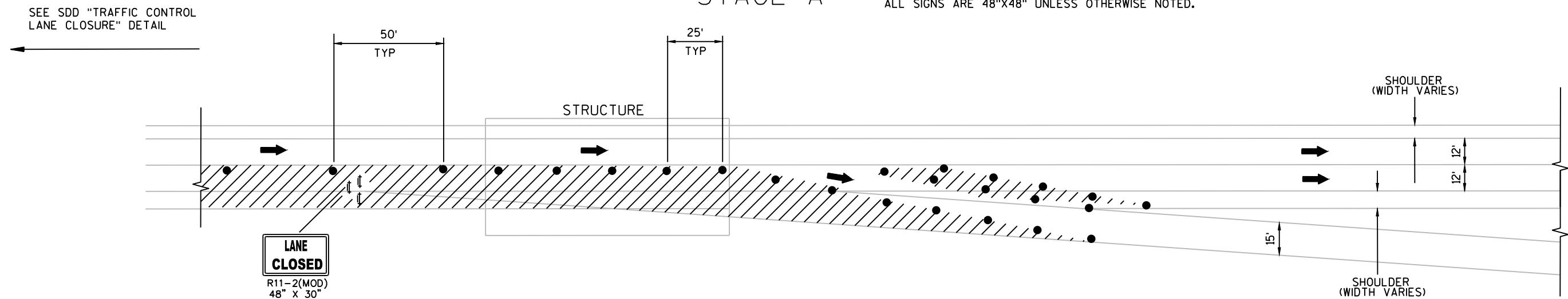
THE SPACING BETWEEN SIGNS SHOULD BE ADJUSTED TO NOT CONFLICT WITH EXISTING SIGNS.

CONSIDER GEOMETRICS WHEN LOCATING SIGNS AND ARROW BOARDS SO THE DRIVER HAS A CLEAR VIEW OF THE ARROW BOARD AND LANE CLOSURE DRUMS.

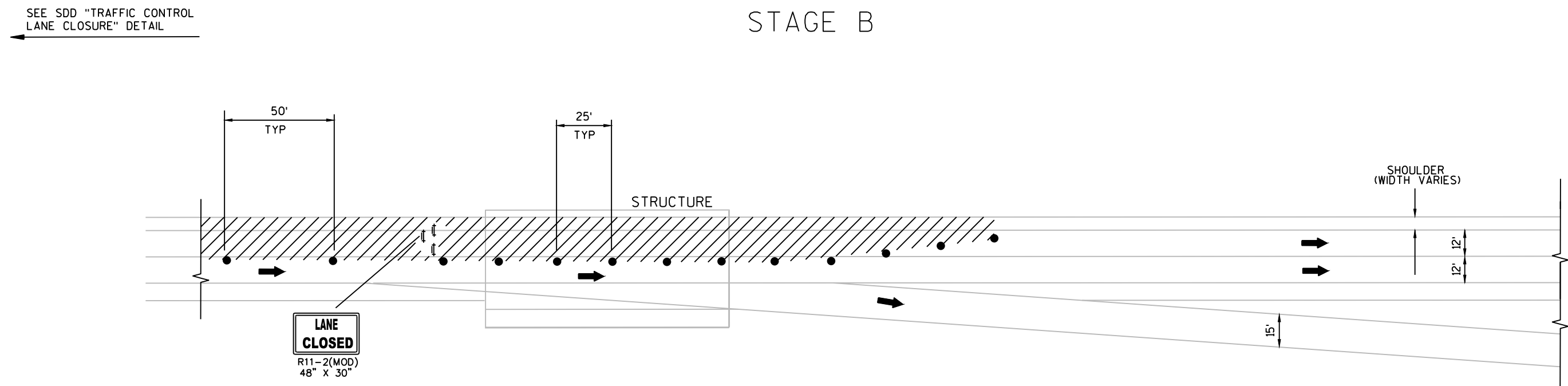
ADJUSTMENTS IN BUFFER SPACE SHOULD BE INCORPORATED WHEN THE LANE CLOSURE OCCURS NEAR AN INTERCHANGE EXIT OR ENTRANCE RAMP. THE LANE CLOSURE MUST TAKE PLACE FAR ENOUGH IN ADVANCE OF AN EXIT OR ENTRANCE RAMP TO ALLOW FOR ADEQUATE BUFFER SPACE. THE MINIMUM LENGTH OF THE BUFFER SPACE BEFORE AN EXIT SHOULD BE  $\frac{1}{2}$  THE LENGTH OF THE TRANSITION AREA.

ALL SIGNS ARE 48"X48" UNLESS OTHERWISE NOTED.

## STAGE A



## STAGE B



## TRAFFIC LANE CLOSURE AT ADJACENT EXIT RAMP

1009-33-22 WORK RESTRICTIONS

COUNTY	ROUTE	CORRIDOR	OVER/UNDER	BRIDGE NAME	BRIDGE NO.	TRAFFIC CONTROL	WORK RESTRICTION #1	WORK RESTRICTION #2	WORK RESTRICTION #3
STH 172 CORRIDOR									
BROWN	STH 172 EB	STH 172	OVER	ASHLAND AVENUE	B-05-0108	LANE CLOSURE	SINGLE: MON - FRI: 6AM - 9AM	SINGLE: MON - FRI: 1PM - 7PM	
BROWN	STH 172 EB	STH 172		ALLOUEZ - ASH BRIDGE	B-05-0149	LANE CLOSURE	SINGLE: MON - FRI: 6AM - 9AM	SINGLE: MON - FRI: 1PM - 7PM	
BROWN	STH 172 WB	STH 172		ALLOUEZ - ASH BRIDGE	B-05-0149	LANE CLOSURE	SINGLE: MON - FRI: 6AM - 9AM	SINGLE: MON - FRI: 2PM - 7PM	
BROWN	STH 172	STH 172	UNDER	WEBSTER AVENUE	B-05-0150	LANE CLOSURE	MON - FRI: 7AM - 9AM	MON - FRI: 2PM - 6PM	
BROWN	STH 172 EB	STH 172	OVER	ONEIDA STREET	B-05-0386	LANE CLOSURE	SINGLE: MON - FRI: 7AM - 9AM	SINGLE: MON - FRI: 2PM - 7PM	
BROWN	STH 172 WB	STH 172	OVER	ONEIDA STREET	B-05-0387	LANE CLOSURE	SINGLE: MON - FRI: 7AM - 9AM	SINGLE: MON - FRI: 2PM - 7PM	
STH 29 CORRIDOR									
BROWN	STH 29	STH 29	UNDER	CTH FF	B-05-0402	FLAGGING OPERATION	MON - FRI: 6AM - 8AM	MON - FRI: 3AM - 6AM	
BROWN	STH 29 WB	STH 29	OVER	CTH J	B-05-0648	LANE CLOSURE	MON-FRI: 3PM - 6PM		
BROWN	STH 29 EB	STH 29	OVER	CTH J	B-05-0649	LANE CLOSURE	MON-FRI: 7AM - 9AM		
BROWN	STH 29 WB - STH 32 NB	STH 29	OVER	DUCK CREEK	B-05-0650	LANE CLOSURE	MON-FRI: 3PM - 6PM		
BROWN	STH 29 EB - STH 32 SB	STH 29	OVER	DUCK CREEK	B-05-0651	LANE CLOSURE	MON-FRI: 7AM - 9AM		
BROWN	STH 29 WB	STH 29	OVER	PACKERLAND DR	B-05-0656	LANE CLOSURE	MON-FRI: 3PM - 6PM		
BROWN	STH 29 EB	STH 29	OVER	PACKERLAND DR	B-05-0657	LANE CLOSURE	MON-FRI: 7AM - 9AM		
BROWN	STH 29 WB	STH 29	OVER	STH 32	B-05-0229	1/2 STRUCTURE - LANE SHIFT			
BROWN	STH 29 EB	STH 29	OVER	STH 32	B-05-0230	LANE CLOSURE	MON-FRI: 7AM - 9AM		
STH 57 CORRIDOR									
BROWN	STH 57	STH 57	OVER	CMST R/R	B-05-0043	FLAGGING OPERATION	MON - FRI: 7AM - 8AM	MON - FRI: 3PM - 6PM	
BROWN	STH 57	STH 57	OVER	EAST RIVER	B-05-0074	FLAGGING OPERATION			
BROWN	STH 57	STH 57	OVER	EAST RIVER	B-05-0262	FLAGGING OPERATION			
STH 54/57 CORRIDOR									
BROWN	STH 57 SB	STH 57	OVER	STH 54	B-05-0321	LANE CLOSURE			
BROWN	STH 57 NB	STH 57	OVER	STH 54	B-05-0323	LANE CLOSURE			
BROWN	STH 57 NB	STH 57	OVER	WEQUIOCK CREEK	B-05-0348	LANE CLOSURE			
BROWN	STH 57 SB	STH 57	OVER	WEQUIOCK CREEK	B-05-0041	LANE CLOSURE			
BROWN	STH 57	STH 57	UNDER	CTH P/CTH DK	B-05-0353	FLAGGING OPERATION			
BROWN	STH 57	STH 57	UNDER	BAY SETTLEMENT ROAD	B-05-0360	LANE CLOSURE			
BROWN	STH 54 WB	STH 54	OVER	UNIVERSITY AVENUE	B-05-0217	LANE CLOSURE	MON - FRI 7:00 AM - 9:00 AM	MON - FRI 4:00 PM - 7:00 PM	MON - FRI 4:00 PM - 7:00 PM
BROWN	STH 54 EB	STH 54	OVER	UNIVERSITY AVENUE	B-05-0218	LANE CLOSURE	MON - FRI 7:00 AM - A:00 AM	MON - FRI 4:00 PM - 7:00 PM	MON - FRI 4:00 PM - 7:00 PM
STH 96 CORRIDOR									
BROWN	STH 96	STH 96	OVER	BR. EAST RIVER	B-05-0274	FLAGGING OPERATION			
STH 54 CORRIDOR									
BROWN	STH 54	STH 54		MASON ST	B-05-0134	LANE CLOSURE	MON - FRI 7:00 AM - 6:00 PM		



1009-33-22 WORK RESTRICTIONS

COUNTY	ROUTE	CORRIDOR	OVER/UNDER	BRIDGE NAME	BRIDGE NO.	TRAFFIC CONTROL	WORK RESTRICTION #1	WORK RESTRICTION #2	WORK RESTRICTION #3
USH 151 CORRIDOR									
FOND DU LAC	USH 151 SB	USH 151	OVER	SO. BR. ROCK RIVER	B-20-0033	LANE CLOSURE			
FOND DU LAC	USH 151 NB	USH 151	OVER	SO. BR. ROCK RIVER	B-20-0034	LANE CLOSURE			
FOND DU LAC	USH 151 NB	USH 151	UNDER	USH 151 NB RAMP	B-20-0062	1/2 STRUCTURE - LANE SHIFT			
FOND DU LAC	USH 151	USH 151	UNDER	USH 151 RAMP/OAK CENTER RD	B-20-0063	1/2 STRUCTURE - LANE SHIFT			
FOND DU LAC	USH 151 SB	USH 151	OVER	USH 41	B-20-0125	LANE CLOSURE	MON - FRI: 6AM - 8AM	MON - FRI: 3PM - 5PM	
FOND DU LAC	USH 151 NB	USH 151	OVER	USH 41	B-20-0126	LANE CLOSURE	MON - FRI: 7AM - 8AM	MON - FRI: 3PM - 6PM	
FOND DU LAC	USH 151 NB	USH 151	OVER	STH 26	B-20-0133	LANE CLOSURE			
FOND DU LAC	USH 151 SB	USH 151	OVER	STH 26	B-20-0134	LANE CLOSURE			
FOND DU LAC	STH 26 NB	USH 151	OVER	STH 26 NB RAMP	B-20-0135	1/2 STRUCTURE - LANE SHIFT			
FOND DU LAC	USH 151 NB	USH 151	OVER	STH 26 NB RAMP	B-20-0136	1/2 STRUCTURE - LANE SHIFT			
FOND DU LAC	USH 151 SB	USH 151	OVER	STH 26 NB RAMP	B-20-0137	1/2 STRUCTURE - LANE SHIFT			
FOND DU LAC	USH 151 SB/STH 26 NB RAMP	USH 151	OVER	STH 26 NB RAMP	B-20-0138	1/2 STRUCTURE - LANE SHIFT			
FOND DU LAC	USH 151 SB	USH 151	OVER	W. BR. ROCK RIVER	B-20-0141	LANE CLOSURE			
FOND DU LAC	USH 151 NB	USH 151	OVER	W. BR. ROCK RIVER	B-20-0142	LANE CLOSURE			
FOND DU LAC	USH 151 NB	USH 151	OVER	SEVEN MILE CREEK	B-20-0145	LANE CLOSURE			
FOND DU LAC	USH 151 SB	USH 151	OVER	SEVEN MILE CREEK	B-20-0146	LANE CLOSURE			
FOND DU LAC	USH 151 NB	USH 151	OVER	DE NEVEU CREEK	B-20-0148	LANE CLOSURE			
FOND DU LAC	USH 151 SB	USH 151	OVER	DE NEVEU CREEK	B-20-0149	LANE CLOSURE			
FOND DU LAC	USH 151 NB	USH 151	OVER	TAYCHEEDAH CREEK	B-20-0150	LANE CLOSURE			
FOND DU LAC	USH 151 SB	USH 151	OVER	TAYCHEEDAH CREEK	B-20-0151	LANE CLOSURE			
FOND DU LAC	USH 151 NB	USH 151	OVER	STH 23	B-20-0152	LANE CLOSURE			
FOND DU LAC	USH 151 SB	USH 151	OVER	STH 23	B-20-0153	LANE CLOSURE			
FOND DU LAC	USH 151 NB	USH 151	OVER	FOX VALLEY & WEBSTER R/R	B-20-0158	LANE CLOSURE			
FOND DU LAC	USH 151 SB	USH 151	OVER	FOX VALLEY & WEBSTER R/R	B-20-0159	LANE CLOSURE			
FOND DU LAC	USH 151	USH 151	UNDER	CTH D NB	B-20-0162	LANE CLOSURE			
FOND DU LAC	USH 151	USH 151	UNDER	CTH D SB	B-20-0163	LANE CLOSURE			
FOND DU LAC	USH 151 NB	USH 151	OVER	RIVER ROAD	B-20-0164	LANE CLOSURE			
FOND DU LAC	USH 151 SB	USH 151	OVER	RIVER ROAD	B-20-0165	LANE CLOSURE			
FOND DU LAC	USH 151	USH 151	UNDER	HICKORY STREET	B-20-0166	FLAGGING OPERATION			
FOND DU LAC	USH 151 NB	USH 151	OVER	E. BR. FOND DU LAC RIVER	B-20-0168	LANE CLOSURE			
FOND DU LAC	USH 151 SB	USH 151	OVER	E. BR. FOND DU LAC RIVER WETLANDS	B-20-0169	LANE CLOSURE			
FOND DU LAC	USH 151 SB	USH 151	OVER	E. BR. FOND DU LAC RIVER	B-20-0170	LANE CLOSURE			
FOND DU LAC	USH 151	USH 151	UNDER	CTH V	B-20-0226	FLAGGING OPERATION			
FOND DU LAC	USH 151	USH 151	UNDER	CTH T	B-20-0227	FLAGGING OPERATION			
FOND DU LAC	USH 151	USH 151	UNDER	STH 175	B-20-3832	FLAGGING OPERATION			
USH 441 CORRIDOR									
OUTAGAMIE	USH 441 NB	USH 441	OVER	USH 41	B-44-0129	LANE CLOSURE	MON - FRI 6am-8pm	SAT 8am-4pm	SUN 10am-6pm
OUTAGAMIE	USH 441 SB	USH 441	OVER	USH 41	B-44-0130	LANE CLOSURE	MON - FRI 6am-8pm	SAT 8am-4pm	SUN 10am-6pm
OUTAGAMIE	USH 441 NB	USH 441	OVER	CTH OO	B-44-0127	LANE CLOSURE	MON - FRI 6am-8pm	SAT 8am-4pm	SUN 10am-6pm
OUTAGAMIE	USH 441 SB	USH 441	OVER	CTH OO	B-44-0128	LANE CLOSURE	MON - FRI 6am-8pm	SAT 8am-4pm	SUN 10am-6pm
OUTAGAMIE	USH 441	USH 441	UNDER	CTH Z	B-44-0125	FLAGGING OPERATION			
OUTAGAMIE	USH 441 NB	USH 441	OVER	CTH CE	B-44-0122	LANE CLOSURE	MON - FRI 6am-8pm	SAT 8am-4pm	SUN 10am-6pm
OUTAGAMIE	USH 441 SB	USH 441	OVER	CTH CE	B-44-0123	LANE CLOSURE	MON - FRI 6am-8pm	SAT 8am-4pm	SUN 10am-6pm
CALUMET	USH 441 NB	USH 441	OVER	CTH KK	B-08-0027	LANE CLOSURE	MON - FRI 6am-7pm	SAT 8am-4pm	SUN 10am-6pm
CALUMET	USH 441 SB	USH 441	OVER	CTH KK	B-08-0028	LANE CLOSURE	MON - FRI 6am-7pm	SAT 8am-4pm	SUN 10am-6pm
CALUMET	USH 441 NB	USH 441	OVER	LAKE PARK ROAD	B-08-0025	LANE CLOSURE	MON - FRI 7am-7pm	SAT 8am-4pm	SUN 10am-6pm
CALUMET	USH 441 SB	USH 441	OVER	LAKE PARK ROAD	B-08-0026	LANE CLOSURE	MON - FRI 7am-7pm	SAT 8am-4pm	SUN 10am-6pm
CALUMET	USH 441	USH 441	UNDER	TELULAH AVENUE	B-08-0024	FLAGGING OPERATION			
WINNEBAGO	USH 441	USH 441	UNDER	CTH P	B-70-0110	1/2 STRUCTURE - LANE SHIFT			

Estimate Of Quantities

1009-33-22

Line	Item	Item Description	Unit	Total	Qty
0002	502.3215.S	Protective Surface Treatment Reseal	SY	188,746.000	188,746.000
0004	619.1000	Mobilization	EACH	1.000	1.000
0006	643.1050	Traffic Control Signs PCMS	DAY	40.000	40.000
0008	SPV.0105	Special 01. Traffic Control Backbone Routes	LS	1.000	1.000
0010	SPV.0105	Special 02. Traffic Control 3R Routes	LS	1.000	1.000

MOBILIZATION

619.1000

CATEGORY	ROADWAY	EACH	REMARKS
0010	BACKBONE	0.7	STRUCTURES ON STH 29, USH 151, STH 172 AND STH 441
0020	3R	0.3	ALL OTHER STRUCTURES

TOTAL1

TRAFFIC CONTROL (1009-33-22)

		SPV.0105.01	SPV.0105.02	REMARKS
CATEGORY	ROADWAY	LUMP SUM	LUMP SUM	
0010	BACKBONE	1		STRUCTURES ON STH 29, USH 151, STH 172 AND STH 441
0020	3R		1	ALL OTHER STRUCTURES

TOTAL11

TRAFFIC CONTROL SIGNS PCMS

643.1050

CATEGORY	ROADWAY	APPROX. SERVICE PERIOD DAYS	NO. IN SERVICE	DAYS	REMARKS
0010	BACKBONE	5	8	40	STRUCTURES ON STH 172 AND STH 441

TOTAL40

NOTE: ADDITIONAL ADVANCED WARNING WILL BE NECESSARY IF LOCAL BRIDGES ARE COMPLETELY CLOSED. SEE SPECIAL PROVISIONS FOR LOCATIONS.

502.3215.S

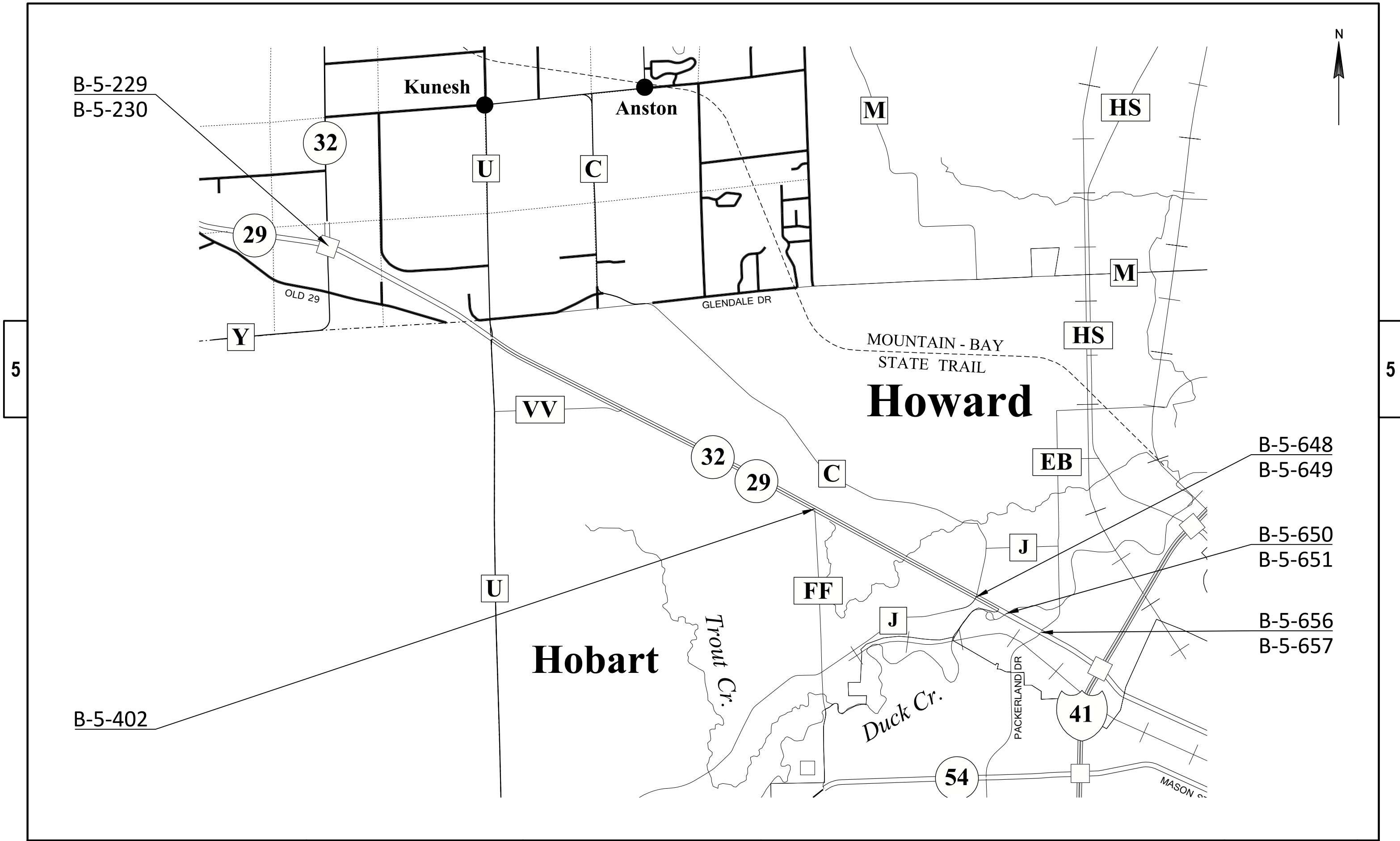
CATEGORY	COUNTY	BRIDGE #	ROUTE	OVER/UNDER	FEATURE	TOTAL SY	COMMENTS
0010	BROWN	B-05-0108	STH 172 EB	OVER	ASHLAND AVENUE	3398.2	
0010	BROWN	B-05-0149	STH 172	OVER	FOX RIVER	39616.2	
0010	BROWN	B-05-0150	STH 172	UNDER	WEBSTER AVENUE	1942.4	
0010	BROWN	B-05-0229	STH 29 WB	OVER	STH 32	836.7	
0010	BROWN	B-05-0230	STH 29 EB	OVER	STH 32	836.7	
0010	BROWN	B-05-0386	STH 172 EB	OVER	ONEIDA STREET	1572.8	
0010	BROWN	B-05-0387	STH 172 WB	OVER	ONEIDA STREET	1241.4	
0010	BROWN	B-05-0402	STH 29	UNDER	CTH FF	2426.2	
0010	BROWN	B-05-0648	STH 29 WB	OVER	CTH J	920.0	
0010	BROWN	B-05-0649	STH 29	OVER	CTH J	920.0	
0010	BROWN	B-05-0650	STH 29 WB - STH 32 NB	OVER	DUCK CREEK	1896.6	
0010	BROWN	B-05-0651	STH 29 EB - STH 32 SB	OVER	DUCK CREEK	1995.0	
0010	BROWN	B-05-0656	STH 29 WB	OVER	PACKERLAND DR	2078.6	
0010	BROWN	B-05-0657	STH 29 EB	OVER	PACKERLAND DR	2078.6	
BROWN COUNTY TOTAL						61759	
0010	CALUMET	B-08-0024	USH 441	UNDER	TELULHA AVENUE	1187.8	
0010	CALUMET	B-08-0025	USH 441 NB	OVER	LAKE PARK ROAD	731.0	
0010	CALUMET	B-08-0026	USH 441 SB	OVER	LAKE PARK ROAD	731.0	
0010	CALUMET	B-08-0027	USH 441 NB	OVER	CTH KK	859.8	
0010	CALUMET	B-08-0028	USH 441 SB	OVER	CTH KK	859.8	
CALUMET COUNTY TOTAL						4369	

CATEGORY	COUNTY	BRIDGE #	ROUTE	OVER/UNDER	FEATURE	TOTAL SY	COMMENTS
0010	FOND DU LAC	B-20-0033	USH 151 SB	OVER	SO. BR. ROCK RIVER	480.5	
0010	FOND DU LAC	B-20-0034	USH 151 NB	OVER	SO. BR. ROCK RIVER	480.5	
0010	FOND DU LAC	B-20-0062	USH 151 NB	UNDER	USH 151 NB RAMP	1126.2	
0010	FOND DU LAC	B-20-0063	USH 151	UNDER	USH 151 RAMP/OAK CENTER RD	2113.1	
0010	FOND DU LAC	B-20-0125	USH 151 SB	OVER	USH 41	1779.4	
0010	FOND DU LAC	B-20-0126	USH 151 NB	OVER	USH 41	1779.4	
0010	FOND DU LAC	B-20-0133	USH 151 NB	OVER	STH 26	1137.4	
0010	FOND DU LAC	B-20-0134	USH 151 SB	OVER	STH 26	1137.4	
0010	FOND DU LAC	B-20-0135	STH 26 NB	OVER	STH 26 NB RAMP	861.4	
0010	FOND DU LAC	B-20-0136	USH 151 NB	OVER	STH 26 NB RAMP	756.5	
0010	FOND DU LAC	B-20-0137	USH 151 SB	OVER	STH 26 NB RAMP	753.4	
0010	FOND DU LAC	B-20-0138	USH 151 SB/STH 26 NB RAMP	OVER	STH 26 NB RAMP	451.2	
0010	FOND DU LAC	B-20-0141	USH 151 SB	OVER	W. BR. ROCK RIVER	489.3	
0010	FOND DU LAC	B-20-0142	USH 151 NB	OVER	W. BR. ROCK RIVER	493.0	
0010	FOND DU LAC	B-20-0145	USH 151 NB	OVER	SEVEN MILE CREEK	388.9	
0010	FOND DU LAC	B-20-0146	USH 151 SB	OVER	SEVEN MILE CREEK	396.3	
0010	FOND DU LAC	B-20-0148	USH 151 NB	OVER	DE NEVEU CREEK	738.3	
0010	FOND DU LAC	B-20-0149	USH 151 SB	OVER	DE NEVEU CREEK	897.0	
0010	FOND DU LAC	B-20-0150	USH 151 NB	OVER	TAYCHEEDAH CREEK	1026.1	
0010	FOND DU LAC	B-20-0151	USH 151 SB	OVER	TAYCHEEDAH CREEK	1521.5	
0010	FOND DU LAC	B-20-0152	USH 151 NB	OVER	STH 23	1048.8	
0010	FOND DU LAC	B-20-0153	USH 151 SB	OVER	STH 23	1048.8	
0010	FOND DU LAC	B-20-0158	USH 151 NB	OVER	FOX VALLEY & WEBSTER R/R	811.8	
0010	FOND DU LAC	B-20-0159	USH 151 SB	OVER	FOX VALLEY & WEBSTER R/R	811.8	
0010	FOND DU LAC	B-20-0162	USH 151	UNDER	CTH D NB	2122.9	
0010	FOND DU LAC	B-20-0163	USH 151	UNDER	CTH D SB	1957.5	
0010	FOND DU LAC	B-20-0164	USH 151 NB	OVER	RIVER ROAD	586.1	
0010	FOND DU LAC	B-20-0165	USH 151 SB	OVER	RIVER ROAD	586.1	
0010	FOND DU LAC	B-20-0166	USH 151	UNDER	HICKORY STREET	1881.4	
0010	FOND DU LAC	B-20-0168	USH 151 NB	OVER	E. BR. FOND DU LAC RIVER	5992.7	
0010	FOND DU LAC	B-20-0169	USH 151 SB	OVER	E. BR. FOND DU LAC RIVER WETLANDS	554.0	
0010	FOND DU LAC	B-20-0170	USH 151 SB	OVER	E. BR. FOND DU LAC RIVER	1896.4	
0010	FOND DU LAC	B-20-0226	USH 151	UNDER	CTH V	1441.2	
0010	FOND DU LAC	B-20-0227	USH 151 NB	UNDER	CTH T	1393.7	
0010	FOND DU LAC	B-20-3832	USH 151	UNDER	STH 175	1845.4	
FOND DU LAC COUNTY TOTAL						42786	

CATEGORY	COUNTY	BRIDGE #	ROUTE	OVER/UNDER		FEATURE	TOTAL SY	COMMENTS
0010	OUTAGAMIE	B-44-0122	USH 441 NB	OVER	CTH	CE	954.4	
0010	OUTAGAMIE	B-44-0123	USH 441 SB	OVER	CTH	CE	954.4	
0010	OUTAGAMIE	B-44-0125	USH 441	OVER	CTH	Z	1160.4	
0010	OUTAGAMIE	B-44-0127	USH 441 NB	OVER	CTH	OO	981.7	
0010	OUTAGAMIE	B-44-0128	USH 441 SB	OVER	CTH	OO	981.7	
0010	OUTAGAMIE	B-44-0129	USH 441 NB	OVER	USH	41	1219.3	
0010	OUTAGAMIE	B-44-0130	USH 441 SB	OVER	USH	41	1250.8	
OUTAGAMIE COUNTY TOTAL							7503	
0010	WINNEBAGO	B-70-0110	USH 441	UNDER	CTH	P	2104.8	
WINNEBAGO COUNTY TOTAL							2105	
CATEGORY 0010 TOTAL							118522	

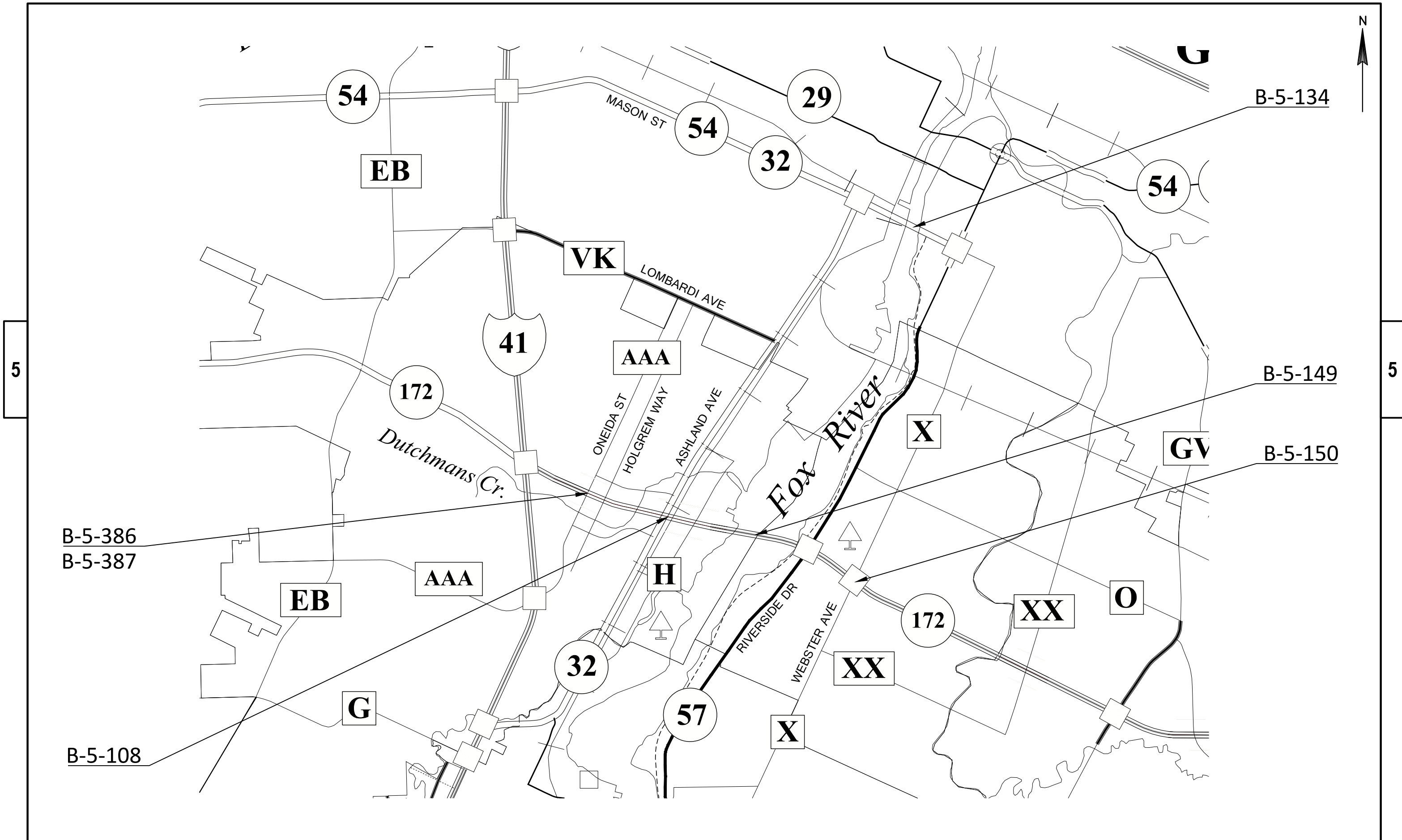
CATEGORY	COUNTY	BRIDGE #	ROUTE	OVER/UNDER	FEATURE	TOTAL SY	COMMENTS
0020	BROWN	B-05-0041	STH 57 SB	OVER	WEQUIOCK CREEK	159.0	
0020	BROWN	B-05-0043	STH 57	OVER	CMST R/R	907.4	
0020	BROWN	B-05-0074	STH 57	OVER	EAST RIVER	466.3	
0020	BROWN	B-05-0134-01	STH 54		MASON STREET	4144.1	
0020	BROWN	B-05-0134-02	STH 54		MASON STREET	4357.2	
0020	BROWN	B-05-0134-03	RAMP STH 54 WB - ASHLAND		MASON STREET	1213.5	
0020	BROWN	B-05-0134-04	RAMP ASHLAND - STH 54 EB		MASON STREET	1160.1	
0020	BROWN	B-05-0134-05	STH 54		MASON STREET	3935.9	
0020	BROWN	B-05-0134-06	STH 54		MASON STREET	1646.3	
0020	BROWN	B-05-0134-07	STH 54		MASON STREET	3304.8	
0020	BROWN	B-05-0134-08	RAMP STH 54 WB - BROADWAY		MASON STREET	855.6	
0020	BROWN	B-05-0134-09	RAMP STH 54 WB - BROADWAY		MASON STREET	1829.6	
0020	BROWN	B-05-0134-10	RAMP BROADWAY - STH 54		MASON STREET	621.9	
0020	BROWN	B-05-0134-11	RAMP BROADWAY - STH 54		MASON STREET	721.3	
0020	BROWN	B-05-0134-12	STH 54		MASON STREET	6075.3	
0020	BROWN	B-05-0134-13	STH 54		MASON STREET	3550.2	
0020	BROWN	B-05-0134-14	STH 54		MASON STREET	4275.7	
0020	BROWN	B-05-0134-15	STH 54		MASON STREET	3693.0	
0020	BROWN	B-05-0134-16	RAMP JEFFERSON - STH 54		MASON STREET	801.1	
0020	BROWN	B-05-0134-17	RAMP JEFFERSON - STH 54		MASON STREET	785.6	
0020	BROWN	B-05-0134-18	STH 54 WB		MASON STREET	3269.6	
0020	BROWN	B-05-0134-19	STH 54 WB		MASON STREET	4308.5	
0020	BROWN	B-05-0134-20	STH 54 EB		MASON STREET	1012.6	
0020	BROWN	B-05-0134-21	STH 54 EB		MASON STREET	476.9	
0020	BROWN	B-05-0134-22	STH 54 WB		MASON STREET	3325.4	
0020	BROWN	B-05-0134-23	RAMP STH 54 EB - STH 57		MASON STREET	561.3	
0020	BROWN	B-05-0134-24	STH 54		MASON STREET	2443.4	
0020	BROWN	B-05-0134-25	STH 54 WB		MASON STREET	1028.7	
0020	BROWN	B-05-0217	STH 54 WB	OVER	UNIVERSITY AVENUE	810.4	
0020	BROWN	B-05-0218	STH 54 EB	OVER	UNIVERSITY AVENUE	925.7	
0020	BROWN	B-05-0262	STH 57	OVER	EAST RIVER	194.5	
0020	BROWN	B-05-0274	STH 96	OVER	BR. EAST RIVER	105.2	
0020	BROWN	B-05-0321	STH 57	OVER	STH 54	918.4	
0020	BROWN	B-05-0323	STH 57 NB	OVER	STH 54	918.4	
0020	BROWN	B-05-0348	STH 57 NB	OVER	WEQUIOCK CREEK	154.5	
0020	BROWN	B-05-0353	STH 57	UNDER	CTH P/CTH DK	2263.2	
0020	BROWN	B-05-0360	STH 57	UNDER	BAY SETTLEMENT ROAD	3003.1	

CATEGORY 0020 TOTAL 70224



PROJECT NO: 1009-33-22	HWY: STH 29	COUNTY: BROWN	PLAN SHEETS	SHEET	E
------------------------	-------------	---------------	-------------	-------	---





Bay of  
Green Bay

Benderville

Dyckesville

DK

57

BADER RD

P

SS

B-5-353

Champion

K

57

GIBSON LN

T

COUNTY LINE RD

K

P

VAN LANEN RD

Wequiock Cr.

CHURCH RD

T

54

CN RR

New Franken

P

57

EA

Green Bay

43

A

I

BAY SETTLEMENT RD

A

B-5-041  
B-5-348

B-5-321  
B-5-323

B-5-360

B-5-217  
B-5-218

PROJECT NO: 1009-33-22

HWY: STH 57

COUNTY: BROWN

PLAN SHEETS

SHEET

E

FILE NAME : N:\PDS\C3D\10093328\SHEETSPLAN\10093322\050201-PN.DWG  
LAYOUT NAME - 050203-pn

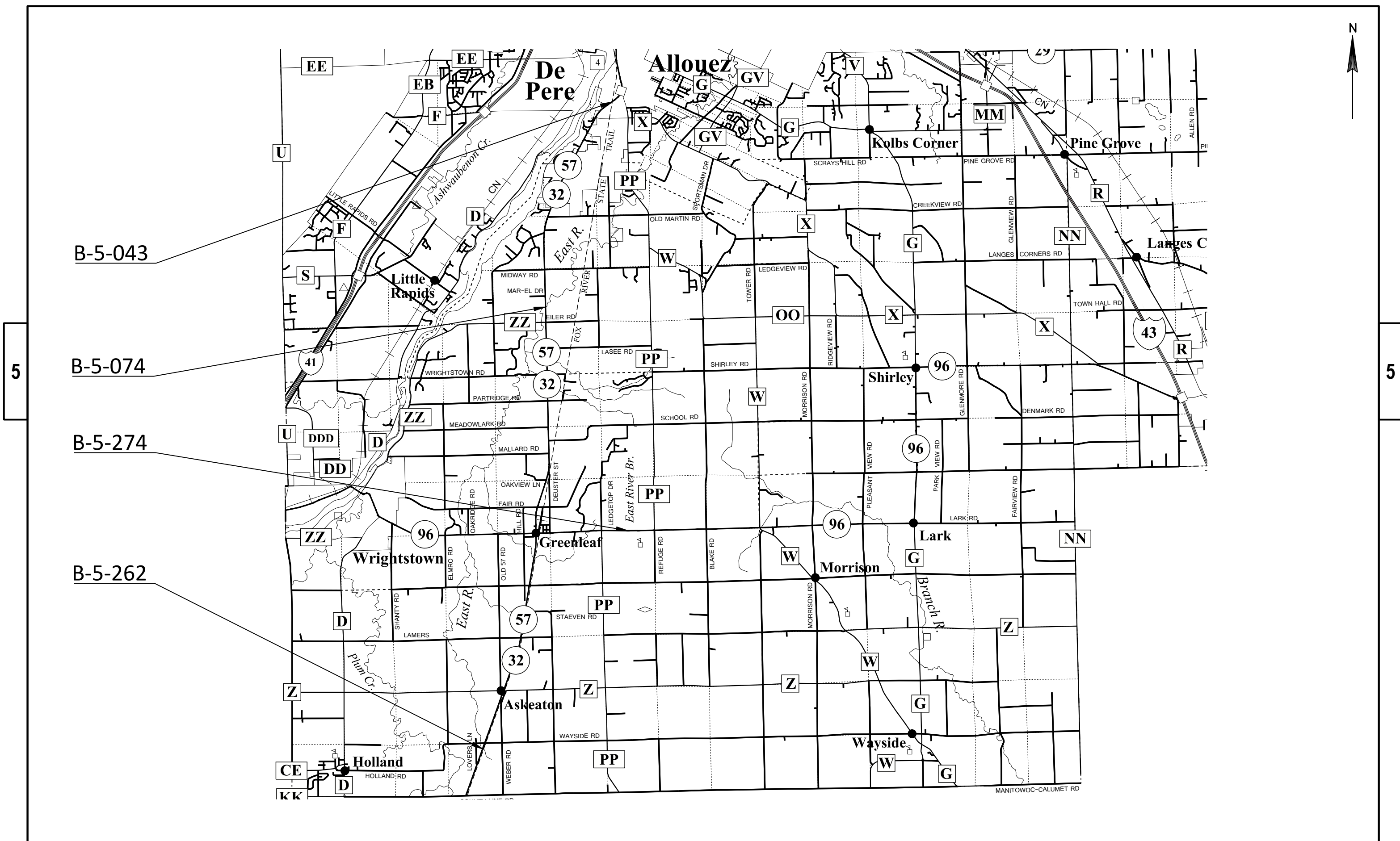
PLOT DATE : 12/4/2017 3:18 PM

PLOT BY : MARTIN, THOMAS S

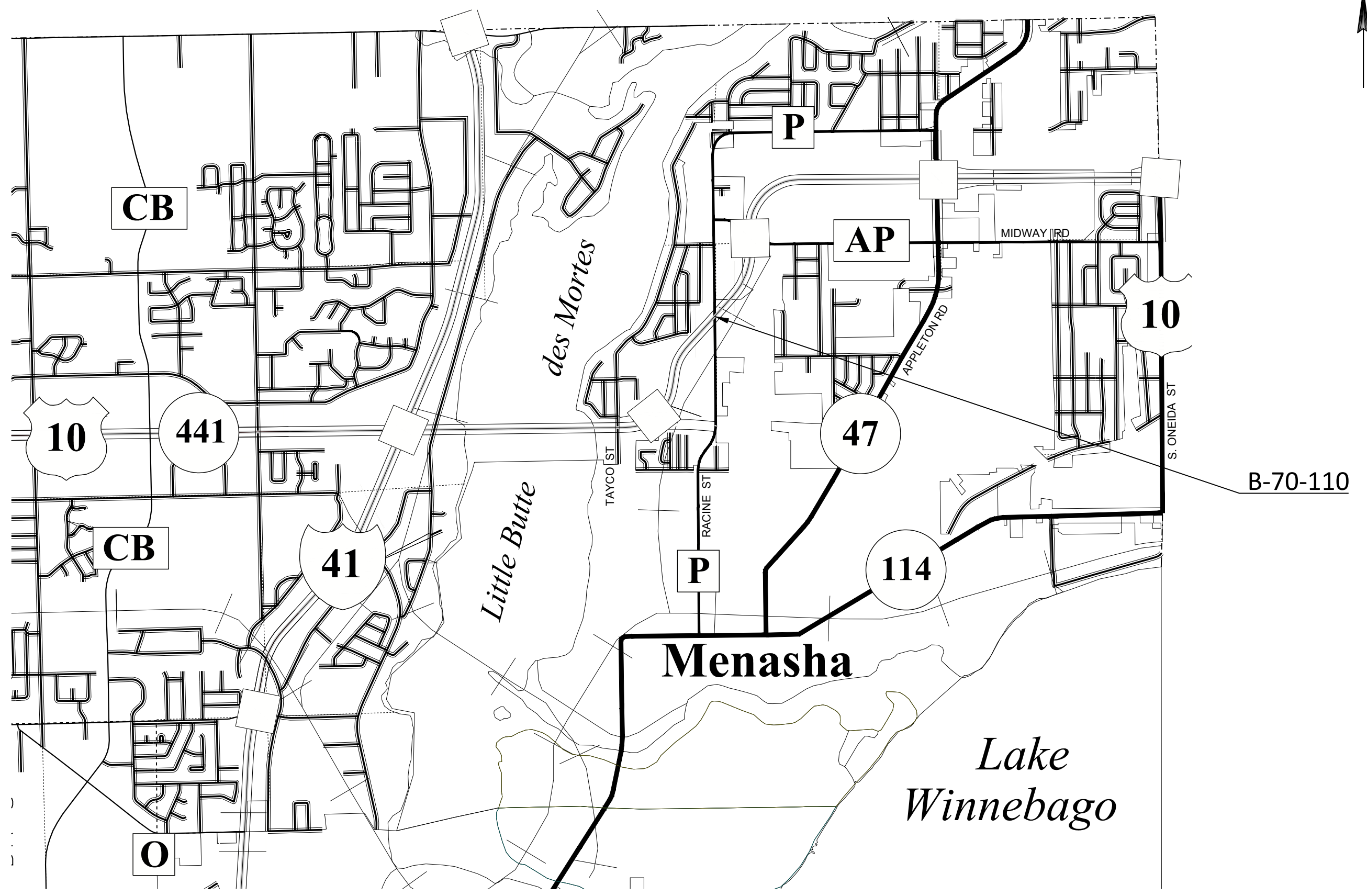
PLOT NAME :

PLOT SCALE : #####

WISDOT/CADDs SHEET 44

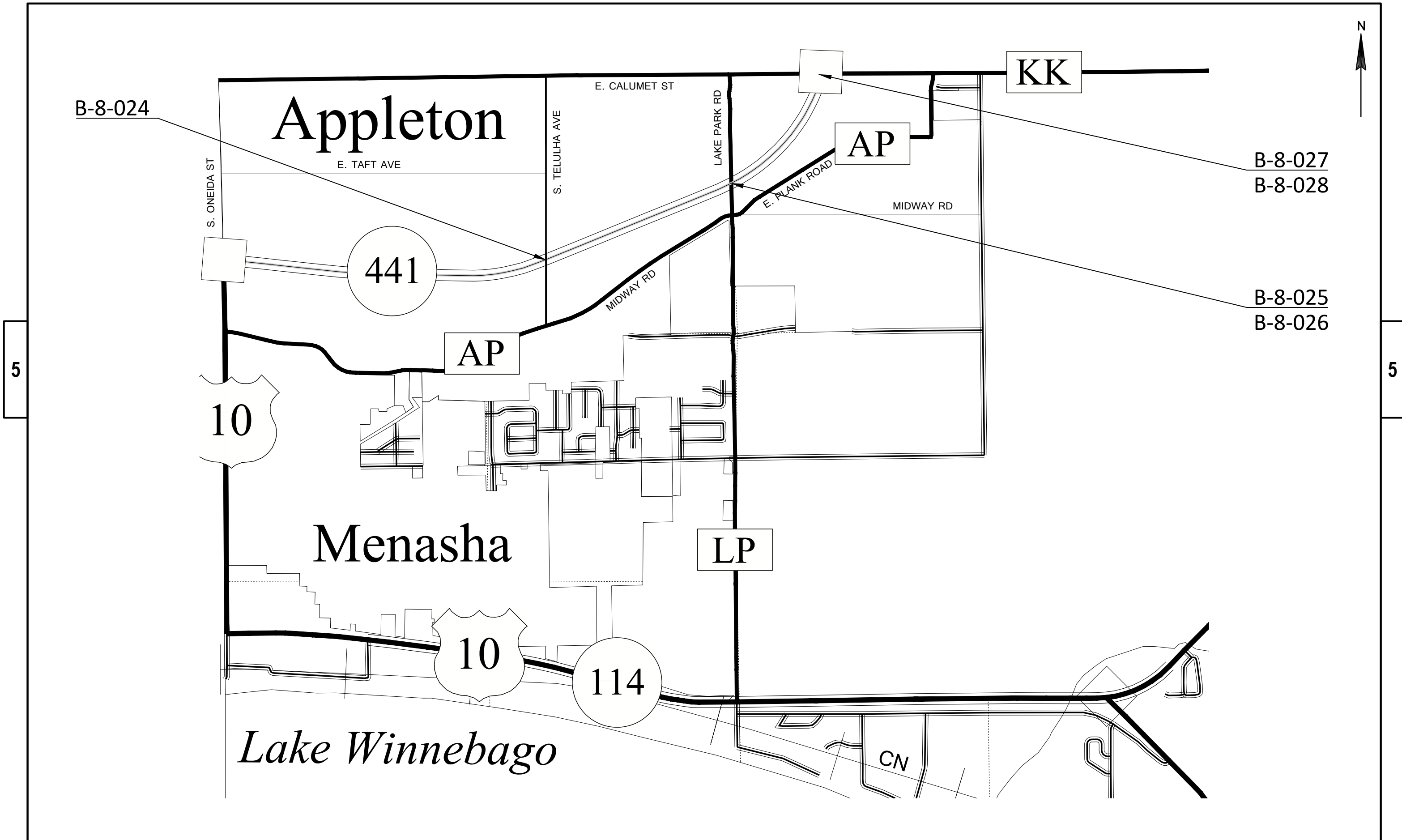


PROJECT NO: 1009-33-22	HWY: VARIOUS	COUNTY: BROWN	PLAN SHEETS	SHEET	E
------------------------	--------------	---------------	-------------	-------	---

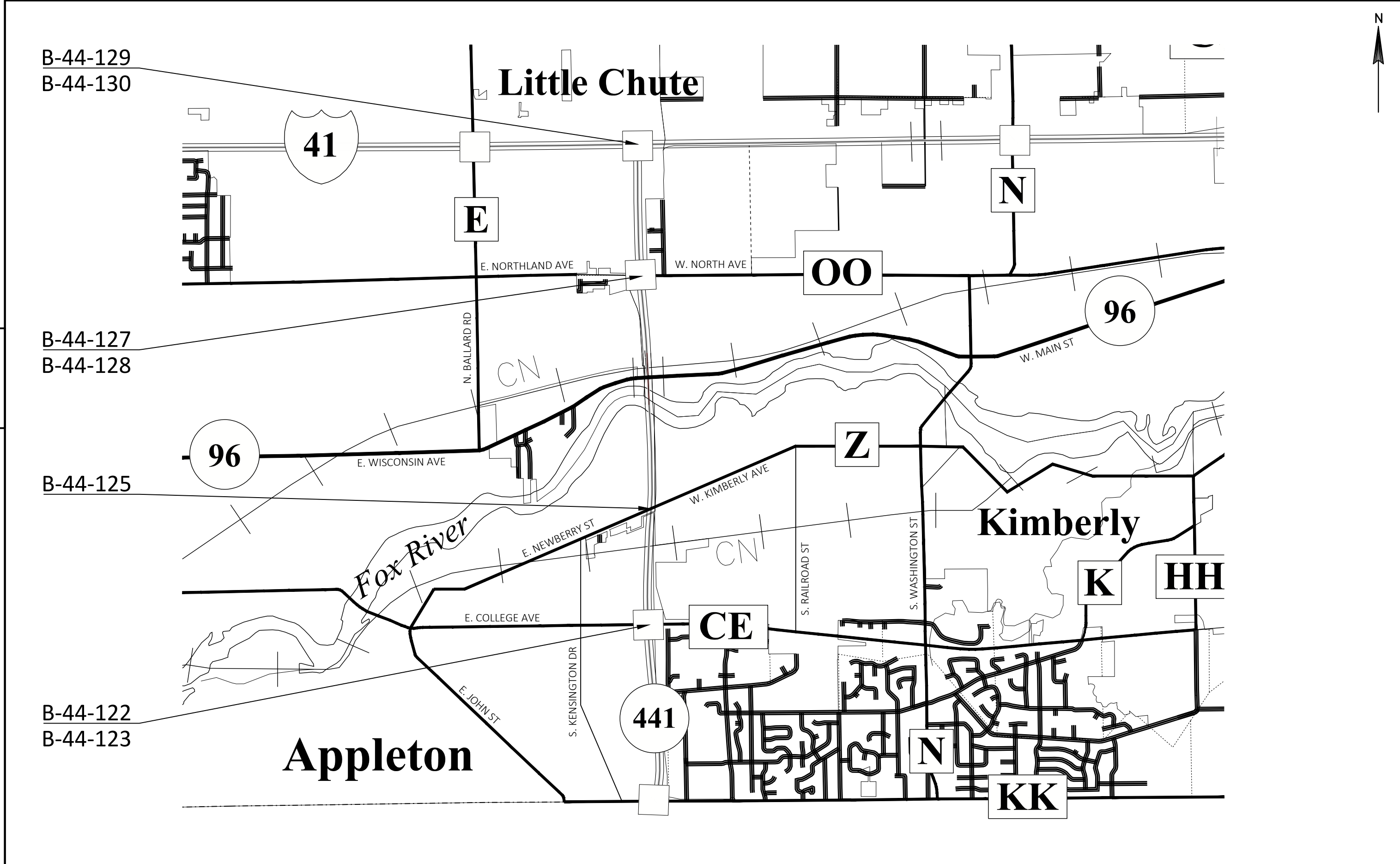


PROJECT NO: 1009-33-22	HWY: STH 441	COUNTY: WINNEBAGO	PLAN SHEETS	SHEET	E
------------------------	--------------	-------------------	-------------	-------	---





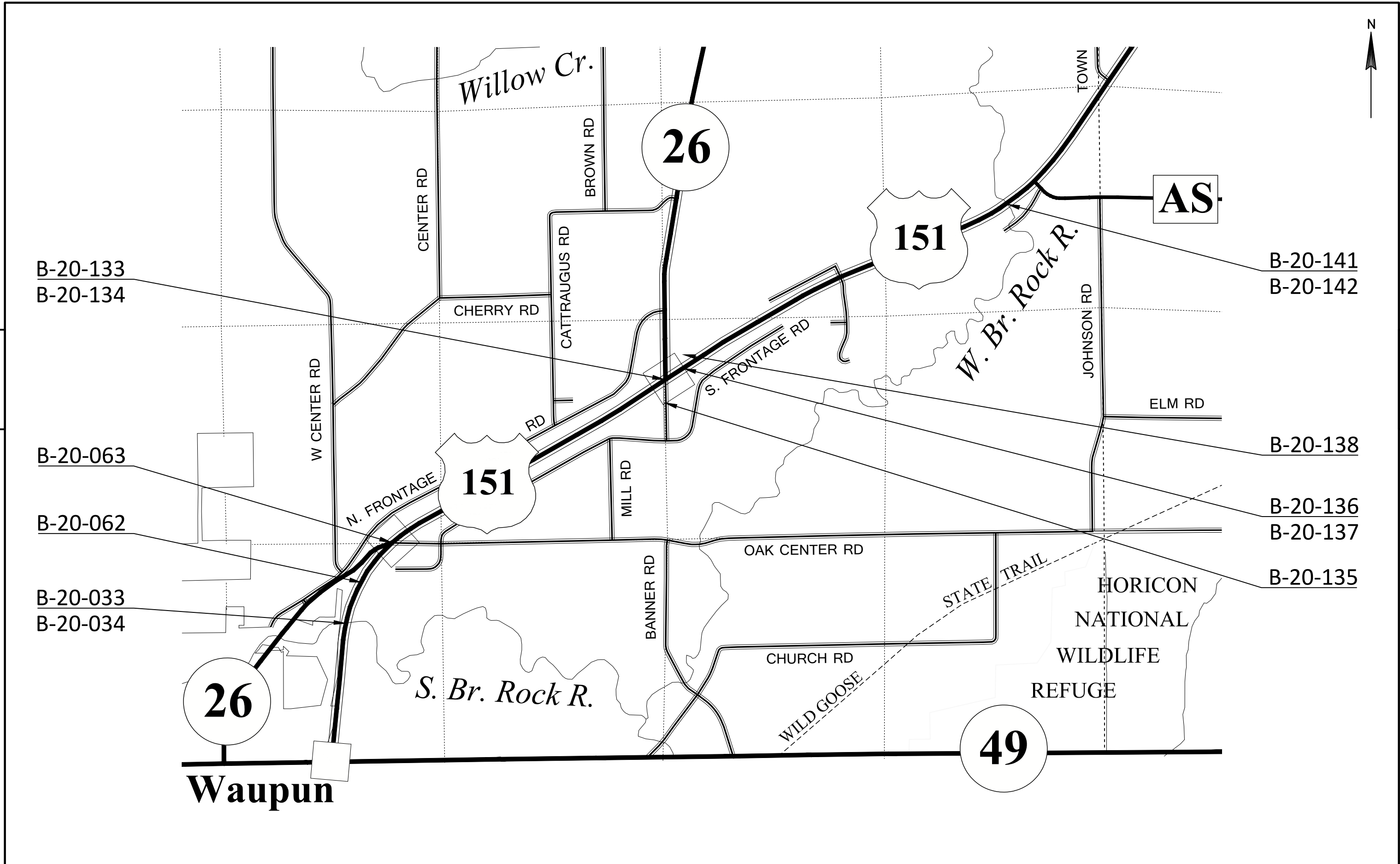
PROJECT NO: 1009-33-22	HWY: STH 441	COUNTY: CALUMET	PLAN SHEETS	SHEET	E
------------------------	--------------	-----------------	-------------	-------	---



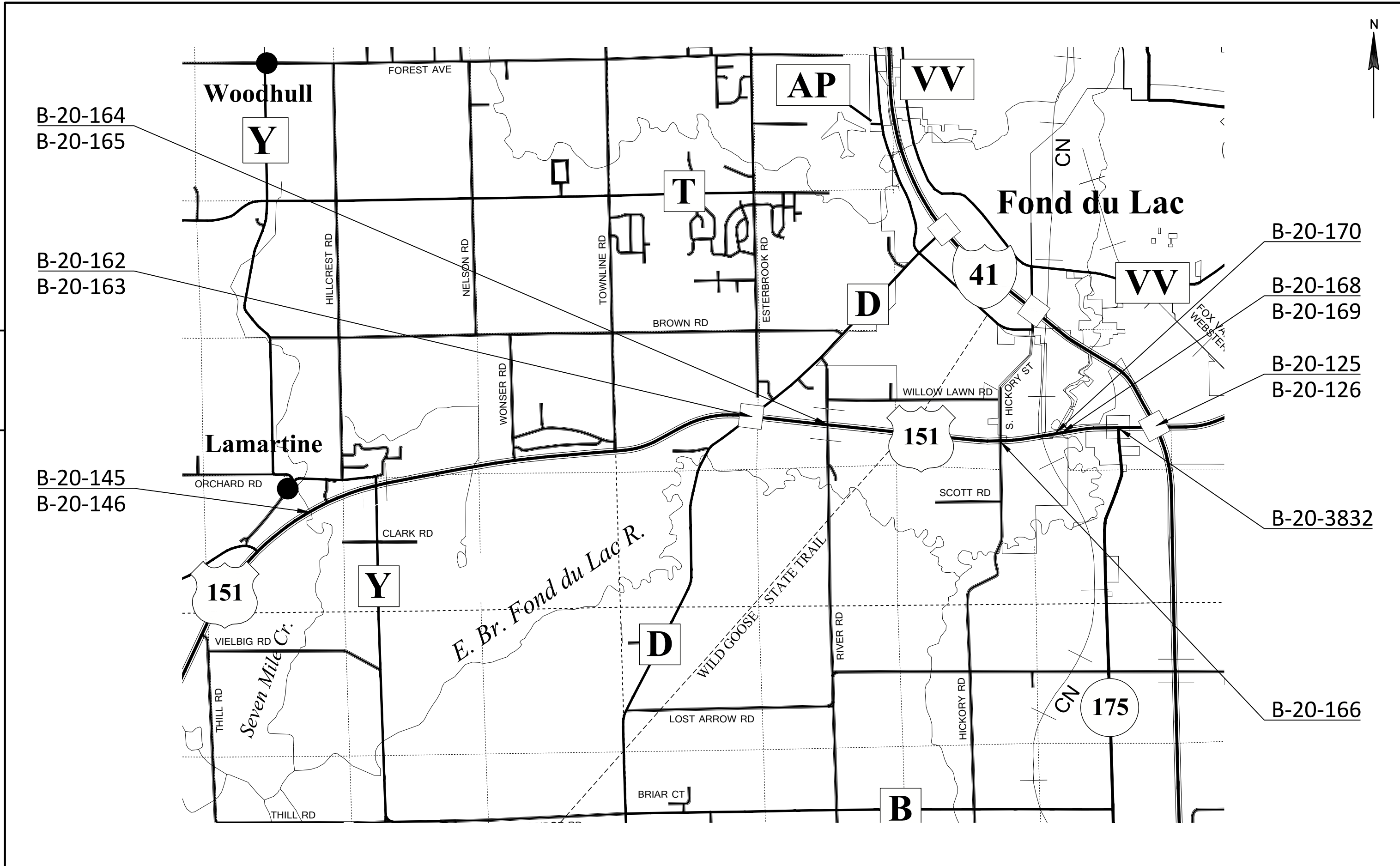
5

5

PROJECT NO: 1009-33-22	HWY: STH 441	COUNTY: OUTAGAMIE	PLAN SHEETS	SHEET	E
------------------------	--------------	-------------------	-------------	-------	---

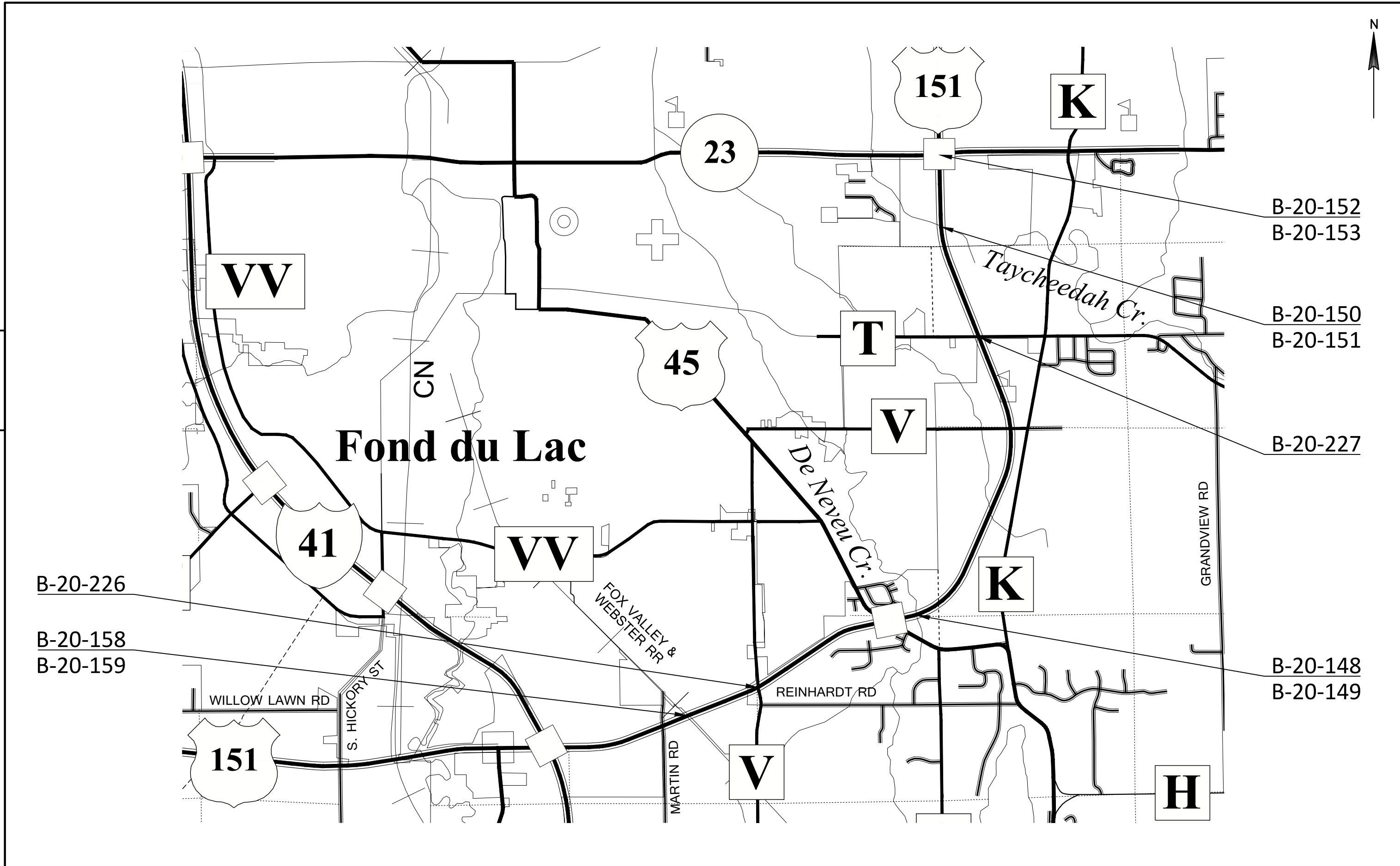


PROJECT NO: 1009-33-22	HWY: USH 151	COUNTY: FOND DU LAC	PLAN SHEETS	SHEET	E
------------------------	--------------	---------------------	-------------	-------	---



PROJECT NO: 1009-33-22	HWY: USH 151	COUNTY: FOND DU LAC	PLAN SHEETS	SHEET	E
------------------------	--------------	---------------------	-------------	-------	---

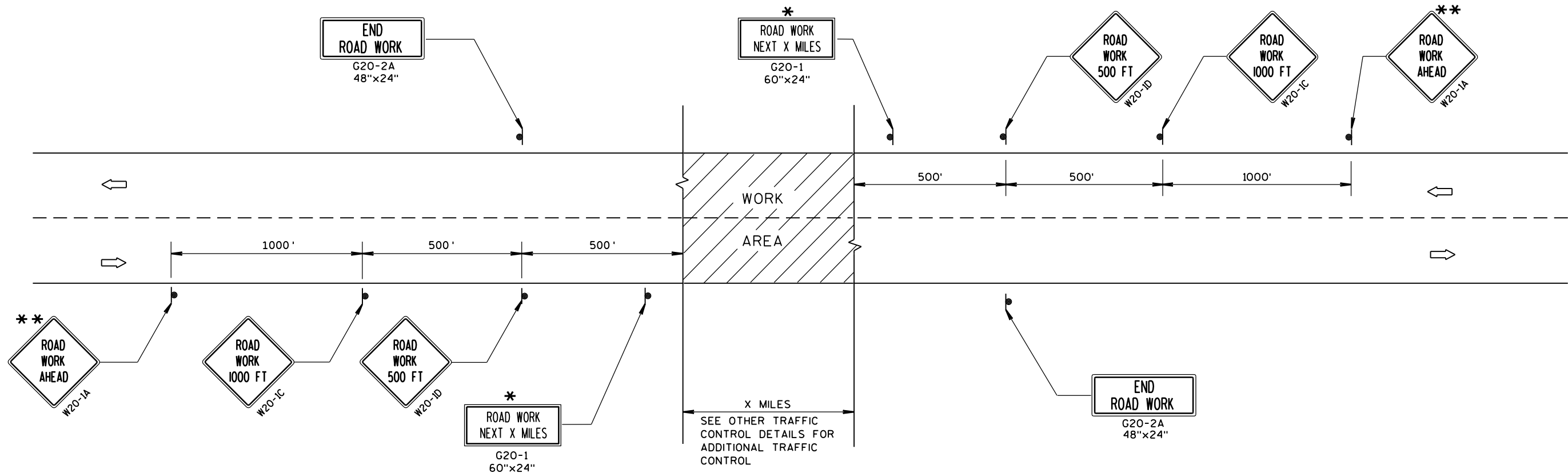




PROJECT NO: 1009-33-22	HWY: USH 151	COUNTY: FOND DU LAC	PLAN SHEETS	SHEET	E
------------------------	--------------	---------------------	-------------	-------	---

Standard Detail Drawing List

15C04-03	TRAFFIC CONTROL, ADVANCE WARNING SIGNS 45 M.P.H. OR GREATER TWO-WAY UNDIVIDED ROAD OPEN TO TRAFFIC
15C12-05	TRAFFIC CONTROL FOR LANE CLOSURE WITH FLAGGING OPERATION
15D20-04	TRAFFIC CONTROL, SINGLE LANE CLOSURE, NON-FREEWAY/EXPRESSWAY



TYPICAL SIDEROAD APPROACH WARNING SIGN DETAIL

## GENERAL NOTES

THE EXACT NUMBER, LOCATION, AND SPACING OF ALL SIGNS AND DEVICES SHALL BE ADJUSTED TO FIT FIELD CONDITIONS.

THE SPACING BETWEEN TRAFFIC CONTROL SIGNS SHOULD BE ADJUSTED TO NOT CONFLICT WITH AND SHOULD PROVIDE A MINIMUM OF 200 FEET (500 FEET DESIRABLE) CLEARANCE TO EXISTING SIGNS THAT WILL REMAIN IN PLACE.

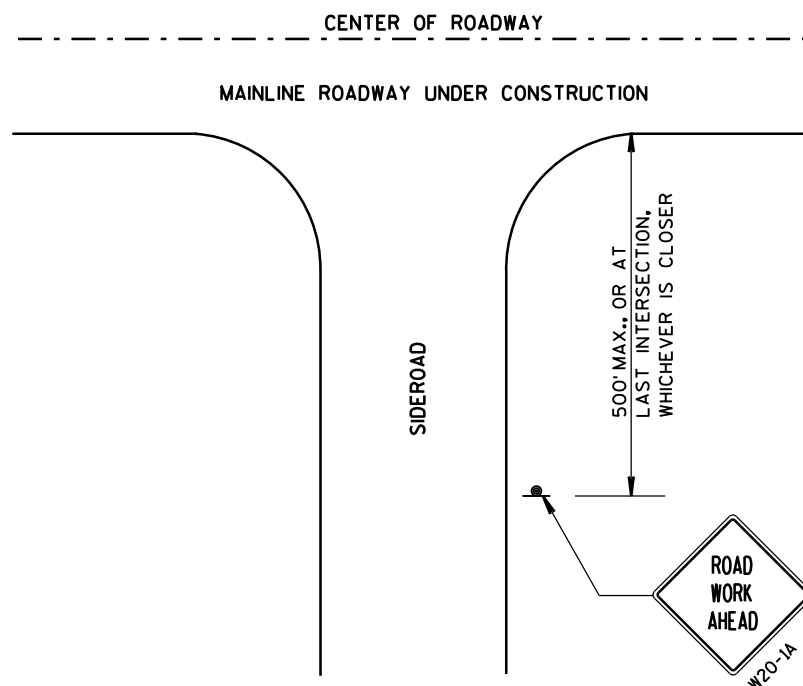
ALL SIGNS ARE 48"x48" UNLESS OTHERWISE NOTED.

SIGNS THAT WILL BE IN PLACE LESS THAN 7 CONTINUOUS DAYS AND NIGHTS MAY BE MOUNTED ON PORTABLE SUPPORTS.

IF A "STOP" SIGN MUST BE REMOVED FOR A WORK OPERATION, A TEMPORARY "STOP" SIGN SHALL BE PLACED PRIOR TO THE SIGN REMOVAL, OR A FLAGGER SHALL BE PROVIDED UNTIL THE SIGN IS RE-ESTABLISHED.

\* OMIT G20-1 SIGNS IF LENGTH OF WORK AREA IS 2 MILES OR LESS.

\*\* PLACE ADDITIONAL W20-1A "ROAD WORK AHEAD" SIGN IF WORK AREA WITHIN THE PROJECT IS SEPARATED BY MORE THAN 2 MILES FROM PREVIOUS WORK AREA.



## LEGEND

- SIGN ON PERMANENT SUPPORT
- DIRECTION OF TRAFFIC
- WORK AREA

TRAFFIC CONTROL, ADVANCE  
WARNING SIGNS 45 M.P.H.  
OR GREATER TWO-WAY  
UNDIVIDED ROAD OPEN TO TRAFFIC

STATE OF WISCONSIN  
DEPARTMENT OF TRANSPORTATION

APPROVED  
Sept. 2015 /S/ Peter Amokobe Atepe  
DATE STATEWIDE WORK ZONE TRAFFIC  
FHWA SAFETY ENGINEER

LEGEND

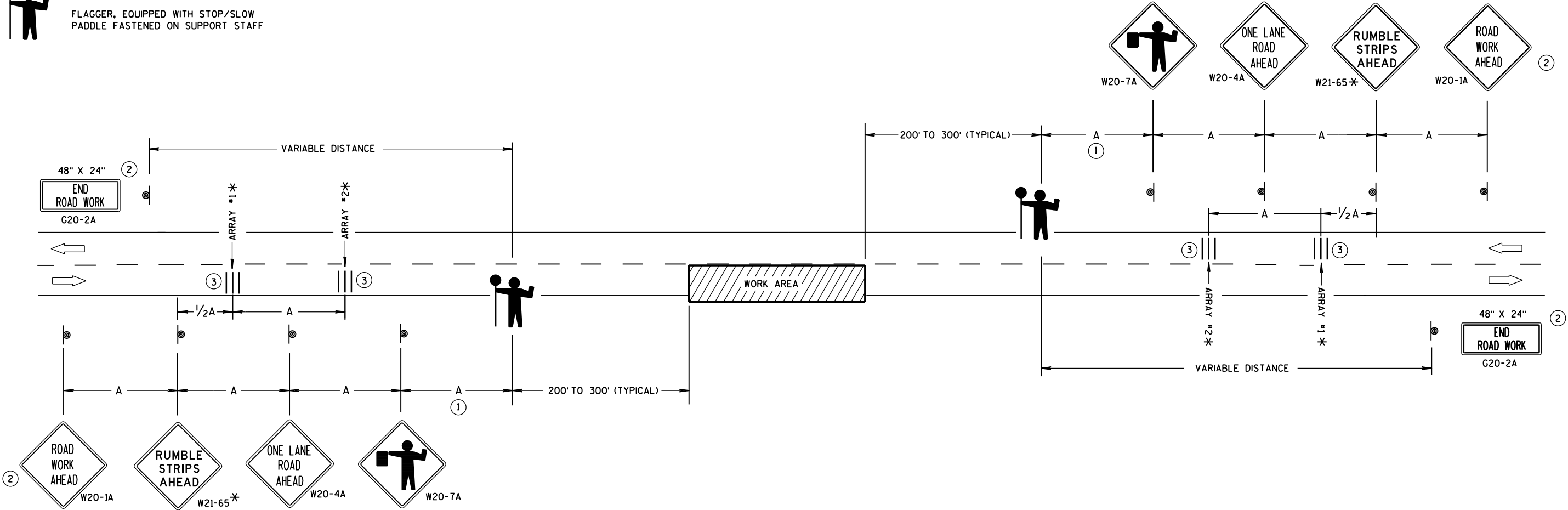
- SIGN ON PORTABLE OR PERMANENT SUPPORT
- DIRECTION OF TRAFFIC
- WORK AREA
- FLAGGER, EQUIPPED WITH STOP/SLOW PADDLE FASTENED ON SUPPORT STAFF

SIGN AND TEMPORARY RUMBLE STRIP ARRAY SPACING TABLE

SPEED LIMIT	SPACING A
25-35 MPH	200'
35-40 MPH	350'
45-55 MPH	500'



USE OF THE "BE PREPARED TO STOP" SIGN IS OPTIONAL. WHEN USED, THIS SIGN SHALL BE LOCATED BETWEEN THE W20-7A AND W20-4A SIGNS, USING SPACING A.



TRAFFIC CONTROL FOR LANE CLOSURE WITH FLAGGING OPERATION

GENERAL NOTES

DETAILS OF TRAFFIC CONTROL DEVICES AND INSTALLATION NOT SHOWN ON THIS DRAWING SHALL CONFORM TO THE PERTINENT REQUIREMENTS OF THE STANDARD SPECIFICATIONS, THE SPECIAL PROVISIONS, AND THE MANUAL ON UNIFORM TRAFFIC CONTROL DEVICES.

THE EXACT NUMBER, LOCATION AND SPACING OF ALL SIGNS AND DEVICES (AND THE LOCATION OF ALL FLAGGERS) SHALL BE ADJUSTED TO FIT FIELD CONDITIONS AS APPROVED BY THE ENGINEER.

THE FIRST ADVANCE WARNING SIGN SHOULD TYPICALLY BE LOCATED IN ADVANCE OF THE ANTICIPATED TRAFFIC BACKUP OR QUEUE.

"W0" SIGNS ARE THE SAME AS "W" SIGNS EXCEPT THE BACKGROUND IS ORANGE.

WHEN A SIDE ROAD OR RAMP INTERSECTS THE FACILITY ON WHICH THE WORK IS BEING PERFORMED, ADDITIONAL TRAFFIC CONTROLS SHALL BE PROVIDED AS SPECIFIED IN THE PLANS AND/OR THE SPECIAL PROVISIONS OR AS APPROVED BY THE ENGINEER.

INSTALL TEMPORARY RUMBLE STRIPS PER MANUFACTURER'S RECOMMENDATIONS. PLACE ADVANCE SIGNING PRIOR TO INSTALLING TEMPORARY RUMBLE STRIPS.

ALL SIGNS ARE 48" X 48" UNLESS OTHERWISE NOTED.

FLAGGERS SHALL BE IN SIGHT OF EACH OTHER OR IN DIRECT COMMUNICATION AT ALL TIMES. THEY SHALL BE EQUIPPED WITH STOP/SLOW PADDLES FASTENED ON SUPPORT STAFFS. WHEN THE FLAGGING OPERATION IS NOT IN EFFECT, REMOVE TEMPORARY RUMBLE STRIPS PRIOR TO COVERING OR REMOVING ALL ADVANCE SIGNING.

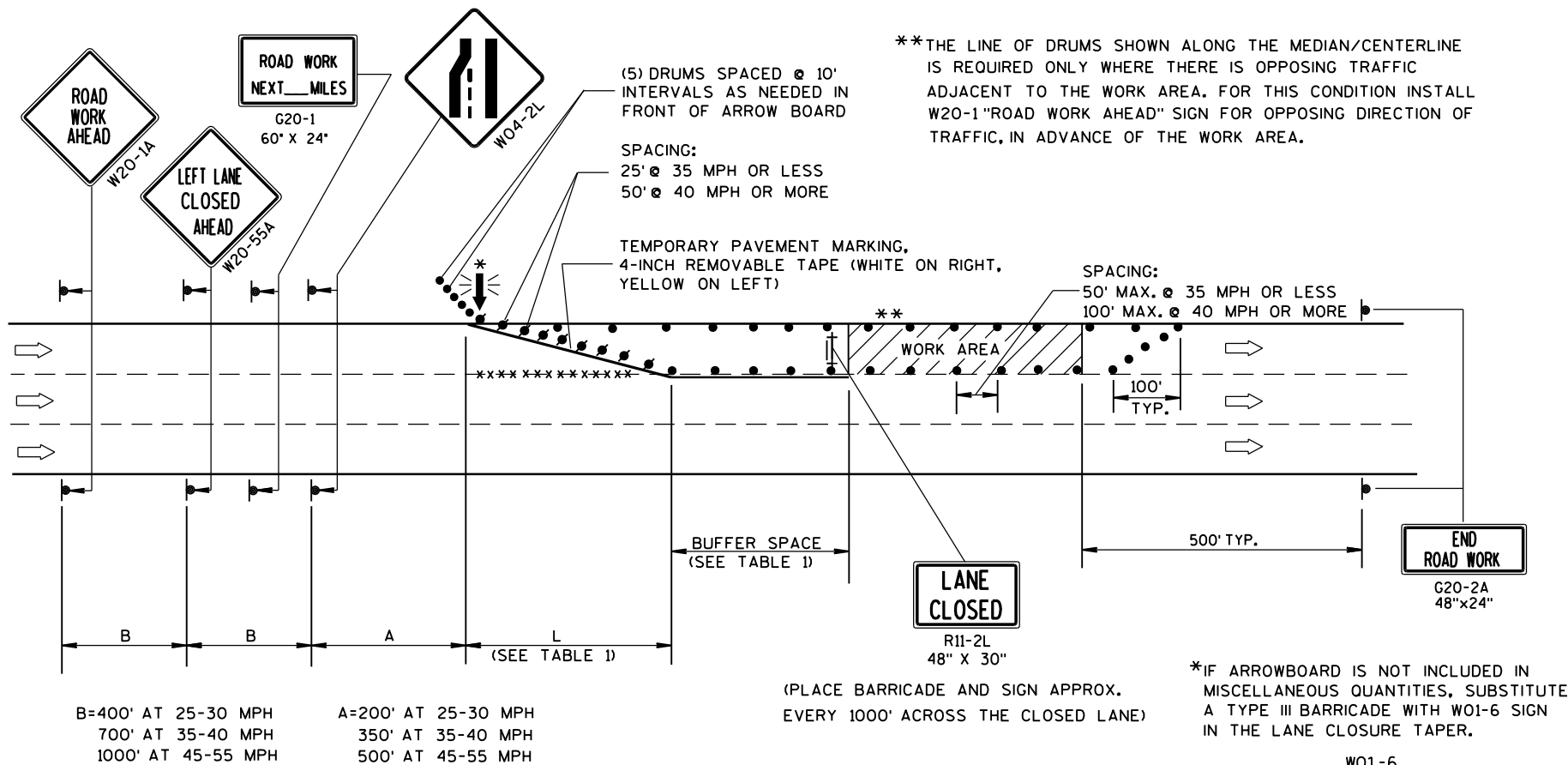
\* UTILIZE TEMPORARY RUMBLE STRIPS WHEN FLAGGING OPERATION IS ANTICIPATED TO BE STATIONARY IN EXCESS OF TWO HOURS.

- FOR A MOVING WORK OPERATION, SIGNING AND TEMPORARY RUMBLE STRIPS (IF USED) SHALL BE REESTABLISHED (AS SIMULTANEOUSLY AS PRACTICAL) AT APPROXIMATELY 3,500 FOOT INTERVALS IN THE MOVING WORK OPERATION OR AS APPROVED BY THE ENGINEER.
- SIGN NOT REQUIRED IF FLAGGING OPERATION OCCURS WITHIN A SIGNED ROAD WORK ZONE AREA.
- EACH TEMPORARY RUMBLE STRIP ARRAY CONSISTS OF THREE RUMBLE STRIPS SPACED ACCORDING TO MANUFACTURER'S RECOMMENDATION, PLACED TRANSVERSE ACROSS THE LANE AT LOCATIONS SHOWN.

TRAFFIC CONTROL FOR LANE CLOSURE WITH FLAGGING OPERATION

STATE OF WISCONSIN  
DEPARTMENT OF TRANSPORTATION

APPROVED  
December, 2016 /S/ Andrew Heldtke  
DATE WORK ZONE ENGINEER  
FHWA



GENERAL NOTES

THIS LANE CLOSURE DETAIL IS TYPICAL FOR CLOSING THE LEFT LANE. FOR A RIGHT LANE CLOSURE, REVERSE THE TRAFFIC CONTROL.

THIS DETAIL MAY BE USED FOR ROADWAYS WITH EITHER TWO OR THREE LANES IN EACH DIRECTION.

THE EXACT NUMBER, LOCATION, AND SPACING OF ALL SIGNS AND DEVICES SHALL BE ADJUSTED TO FIT FIELD CONDITIONS AS APPROVED BY THE ENGINEER.

THE SPACING BETWEEN TRAFFIC CONTROL SIGNS SHOULD BE ADJUSTED TO NOT CONFLICT WITH AND SHOULD PROVIDE A DESIRABLE MINIMUM OF 200 FEET CLEARANCE TO EXISTING SIGNS THAT WILL REMAIN IN PLACE.

ALL SIGNS ARE 48"x48" UNLESS OTHERWISE NOTED. IF NECESSARY DUE TO SPACE CONSTRAINTS IN URBAN AREAS, 36" X 36" SIGNS MAY BE USED IF APPROVED BY DISTRICT TRAFFIC UNIT.

"WO" SIGNS ARE THE SAME AS "W" SIGNS EXCEPT THE BACKGROUND IS ORANGE.

SIGNS THAT WILL BE IN PLACE LESS THAN 7 CONTINUOUS DAYS AND NIGHTS, OR THAT WILL BE PLACED IN A CLOSED LANE, MAY BE MOUNTED ON PORTABLE SUPPORTS.

ANY SIGNS TEMPORARY OR EXISTING, WHICH CONFLICT WITH TRAFFIC CONTROL "IN USE" SHALL BE REMOVED OR COVERED AS NEEDED AND AS APPROVED BY THE ENGINEER.

REMOVE PAVEMENT MARKINGS AND PLACE TEMPORARY PAVEMENT MARKING, REMOVABLE TAPE IF LANE CLOSURE IS TO BE IN PLACE FOR 4 OR MORE CONTINUOUS DAYS AND NIGHTS.

ON UNDIVIDED ROADWAYS, OMIT THE SIGNS SHOWN ON LEFT SIDE OF ROAD.

W20-1A, G20-1 AND G20-2A SIGNS ARE NOT REQUIRED IF THE LANE CLOSURE IS WITHIN A LARGER WORK ZONE WHERE THESE SIGNS ARE ALREADY PRESENT.

OMIT G20-1 SIGNS IF LENGTH OF WORK AREA IS 2 MILES OR LESS.

CONSIDER GEOMETRICS WHEN LOCATING SIGNS AND ARROWBOARDS SO THE APPROACHING DRIVER HAS A CLEAR VIEW OF THE ARROWBOARDS AND LANE CLOSURE DRUMS.

PLACE THE ARROWBOARD AS CLOSE AS POSSIBLE TO THE BEGINNING OF THE LANE CLOSURE TAPER, PREFERABLY ON THE SHOULDER OR TERRACE.

CHANNELIZING DEVICES PLACED ADJACENT TO WORK AREA SHALL BE PULLED BACK FROM THE TRAVEL LANE WHEN WORK IS NOT IN PROGRESS.

BARRICADES IN A CLOSED LANE THAT MUST BE MOVED FOR A WORK OPERATION SHALL BE IMMEDIATELY RE-ESTABLISHED UPON COMPLETION OF THE OPERATION OR, FOR CONTINUING OPERATIONS, AT THE END OF EACH WORKING DAY.

WARNING LIGHTS ARE NOT REQUIRED IF THE LANE CLOSURE IS A DAYTIME ONLY OPERATION.

TABLE 1  
TAPER AND BUFFER SPACE  
FOR 12' LANE WIDTH

S	L	BUFFER SPACE
25	125'	55'
30	180'	85'
35	245'	120'
40	320'	170'
45	540'	220'
50	600'	280'
55	660'	335'

FOR LANE WIDTH OTHER THAN 12':

L = WS AT 45 MPH OR GREATER

$L = \frac{WS^2}{60}$  AT 40 MPH OR LESS

L = TAPER LENGTH IN FEET

S = NON-CONSTRUCTION SPEED LIMIT (MPH)

W = WIDTH OF LANE CLOSURE

LEGEND

- TYPE III BARRICADE WITH ATTACHED SIGN
- SIGN ON PERMANENT SUPPORT
- TRAFFIC CONTROL DRUM WITH TYPE "C" STEADY BURN LIGHT
- TRAFFIC CONTROL DRUM
- FLASHING ARROW BOARD
- DIRECTION OF TRAFFIC
- REMOVING PAVEMENT MARKING (SEE GENERAL NOTES)
- WORK AREA

TRAFFIC CONTROL,  
SINGLE LANE CLOSURE,  
NON-FREEWAY/EXPRESSWAY

STATE OF WISCONSIN  
DEPARTMENT OF TRANSPORTATION

APPROVED  
June 2016 /S/ Peter Amakobe Atepe  
DATE STATEWIDE WORK ZONE TRAFFIC  
FHWA SAFETY ENGINEER



## ***Wisconsin Department of Transportation***

Dedicated people creating transportation solutions  
through innovation and exceptional service.

<http://www.dot.wisconsin.gov>