

EAU
PROJECT ID: 9227-01-22
WITH:

COUNTY: N.W. REGION

JULY 2014

ORDER OF SHEETS

Section No. 1 Title
Section No. 2 Typical Sections and Details
Section No. 3 Estimate of Quantities
Section No. 3 Miscellaneous Quantities

Section No. 5 Plan and Profile
Section No. 6 Standard Detail Drawings

TOTAL SHEETS = 22

32

CONVENTIONAL SYMBOLS

PLAN

CORPORATE LIMITS

PROPERTY LINE

LOT LINE

LIMITED HIGHWAY EASEMENT

EXISTING RIGHT OF WAY

PROPOSED OR NEW R/W LINE

SLOPE INTERCEPT

REFERENCE LINE

EXISTING CULVERT

PROPOSED CULVERT
(Box or Pipe)

COMBUSTIBLE FLUIDS

MARSH AREA

WOODED OR SHRUB AREA

PROFILE

GRADE LINE

ORIGINAL GROUND

MARSH OR ROCK PROFILE
(To be noted as such)

SPECIAL DITCH

GRADE ELEVATION

CULVERT (Profile View)

UTILITIES

ELECTRIC

FIBER OPTIC

GAS

SANITARY SEWER

STORM SEWER

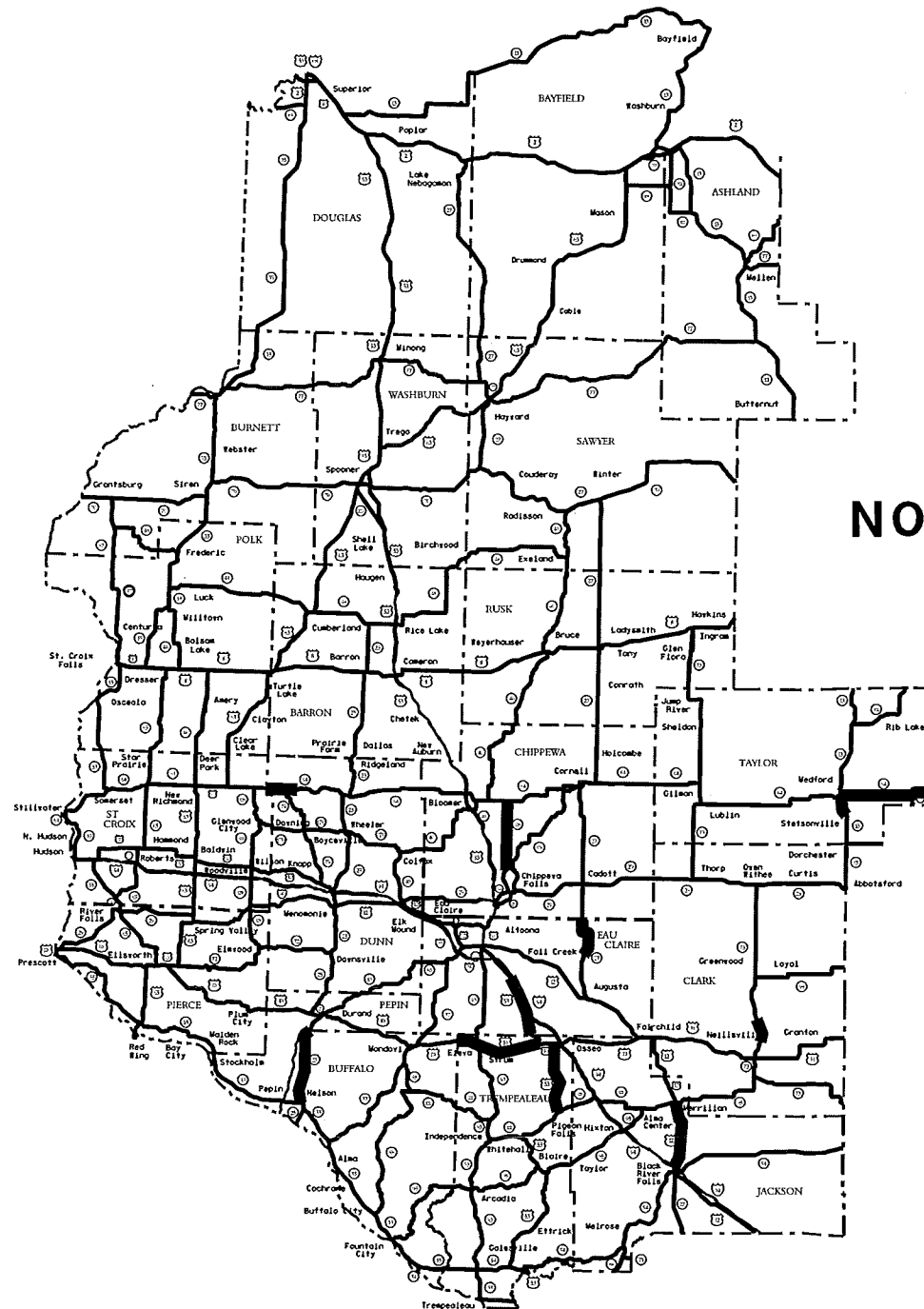
TELEPHONE

WATER

UTILITY PEDESTAL

POWER POLE

TELEPHONE POLE



STATE OF WISCONSIN
DEPARTMENT OF TRANSPORTATION

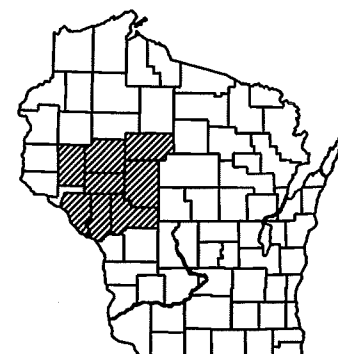
PLAN OF PROPOSED IMPROVEMENT

NORTHWEST REGION VARIOUS HIGHWAYS
(CRACKFILL)

(VARIOUS HIGHWAYS)

NORTHWEST REGION WIDE

STATE PROJECT NUMBER
9227-01-22



COORDINATES ON THIS PLAN ARE REFERENCED TO THE WISCONSIN COUNTY
COORDINATE SYSTEM (WCCS).

STATE OF WISCONSIN
DEPARTMENT OF TRANSPORTATION

PREPARED BY

Surveyor NORTHWEST REGION
Designer DOUGLAS ANDERSON
Project Manager NICOLE PASSUELLO, PE
District Examiner DANIEL OUBAY
District Supervisor TIM MASON, PE
C.O. Examiner

APPROVED FOR DISTRICT OFFICE

DATE: 1/30/14 (Signature)

E

LIST OF STANDARD ABBREVIATIONS

ABUT.	ABUTMENT
AGG.	AGGREGATE
AH.	AHEAD
APPROX.	APPROXIMATE
A.E.W.	APRON ENDWALL
ASPH.	ASPHALTIC
A.D.T.	AVERAGE DAILY TRAFFIC
AZ.	AZIMUTH
BK.	BACK
BEG.	BEGIN
B.M.	BENCH MARK
C/L	CENTER LINE
CONC.	CONCRETE
CONST.	CONSTRUCTION
CO.	COUNTY
C.T.H.	COUNTY TRUNK HIGHWAY
X-SEC.	CROSS SECTION
CR.	CRUSH
CFS	CUBIC FEET/SECOND
C.Y., CU.YD.	CUBIC YARD
CULV.	CULVERT
C.P.	CULVERT PIPE
D.O.T.	DEPARTMENT OF TRANSPORTATION
D.H.V.	DESIGN HOUR VOLUME
DIA.	DIAMETER
D.	DIRECTIONAL DISTRIBUTION
DISH. OR DIS.	DISCHARGE
EA.	EACH
ELECT.	ELECTRICT
EL. OR ELEV.	ELEVATION
EMB.	EMBANKMENT
E.B.S.	EXCAVATION BELOW SUBGRADE
EXIST.	EXISTING
FERT.	FERTILIZE
F.E.	FIELD ENTRANCE
FIN.	FINISHED
FT.	FOOT
F.L.	FLOW LINE
GA.	GAUGE
HORIZ.	HORIZONTAL
CWT.	HUNDREDWEIGHT
INL.	INLET
LT.	LEFT
L.H.F.	LEFT-HAND FORWARD
LIN.	LINEAR
LIN. FT.	LINEAR FOOT
L.S.	LUMP SUM
MAX.	MAXIMUM
MI.	MILE
MISC.	MISCELLANEOUS
N.E.	NORTH EAST
N.W.	NORTH WEST
PAV'T	PAVEMENT
P.C.	POINT OF CURVATURE
P.I.	POINT OF INTERSECTION
P.T.	POINT OF TANGENCY
P.O.T.	POINT OF TANGENT
LB.	POUND
P.E.	PRIVATE ENTRANCE
PROJ.	PROJECT
R.	RANGE
REQ'D	REQUIRE
RT.	RIGHT
R.H.F.	RIGHT-HAND FORWARD
R/W	RIGHT OF WAY
RD.	ROAD
SHR.	SHRINKAGE
SL.	SLOPE
STD.	STANDARD
S.D.D.	STANDARD DETAIL DRAWINGS
S.T.H.	STATE TRUNK HIGHWAY
STA.	STATION
S.P.P.A.	STRUCTURAL PLATE PIPE ARCH
STRUCT.	STRUCTURE
SURF.	SURFACE
TEL.	TELEPHONE
TN.	TOWN
T.	TRUCKS (PERCENT OF)
UNCL.	UNCLASSIFIED
U.G.	UNDERGROUND
V.	VELOCITY OR DESIGN SPEED
V.C.	VERTICAL CURVE

GENERAL NOTES

THE ENGINEER WILL DETERMINE ANY DETAILS OF CONSTRUCTION NOT SHOWN ON THE PLAN.

ELEVATIONS SHOWN ON THE PLAN ARE REFERENCED TO USGS DATUM.

BEARINGS SHOWN ON THE PLANS ARE COUNTY BEARINGS TO THE NEAREST SECOND.

PERSUANT TO CHAPTER 59 OF THE WISCONSIN STATUTES, SEARCH FOR EVIDENCE OF A LANDMARK IN ALL AREAS WHERE SUCH A LANDMARK MAY EXIST.

REMOVAL OF ANY SURVEY MARKER REQUIRES APPROVAL OF THE ENGINEER.

* STRUCTURES THAT HAVE A CONCRETE DECK SHALL NOT HAVE SEALANT APPLIED TO THEM, BUT WILL HAVE THE PROJECT ENGINEER DETERMINE IF THEY WILL HAVE PAVEMENT MARKINGS APPLIED OR NOT.

* STRUCTURES THAT HAVE AN ASPHALTIC SURFACE SHALL BE CRACK SEALED AND HAVE PAVEMENT MARKINGS APPLIED WITH THE REST OF THE SEGMENT.

DIGGERSHOTLINE

Dial 811 or (800)242-8511

www.DiggersHotline.com

UTILITIES

THERE ARE UTILITIES IN THE AREA, BUT THE PROJECT WILL NOT CONFLICT WITH OR IMPACT THEM.

RAILROAD

CANADIAN NATIONAL RAILROAD (WCL)
ATTN: JACKIE MACEWICZ
1625 DEPOT STREET
STEVENS POINT, WI 54481
PHONE: (715) 345-2503
FAX: (715) 345-2534
EMAIL: jackie.macewicz@cn.ca

UNION PACIFIC RAILROAD COMPANY
ATTN: JOHN VENICE
101 NORTH WACKER DRIVE
CHICAGO, IL 60606
PHONE: (312) 777-2043
FAX: (402) 233-2769
EMAIL: jnvenice@up.com

PROGRESSIVE RAIL INCORPORATED
ATTN: LON VAN GEMERT
21778 HIGHVIEW AVENUE
LAKEVILLE, MN
PHONE: (952) 469-0323
FAX: (952) 985-7626
EMAIL: lvangemert@progressiverail.com

WISCONSIN DNR LAX - LIASON

DNR - SATELLITE CENTER (W. CENTRAL REGION)
3550 MORMON COULEE ROAD
LA CROSSE, WI 54001
PHONE: (608) 785-9115
ATTN: KAREN KALVELAGE

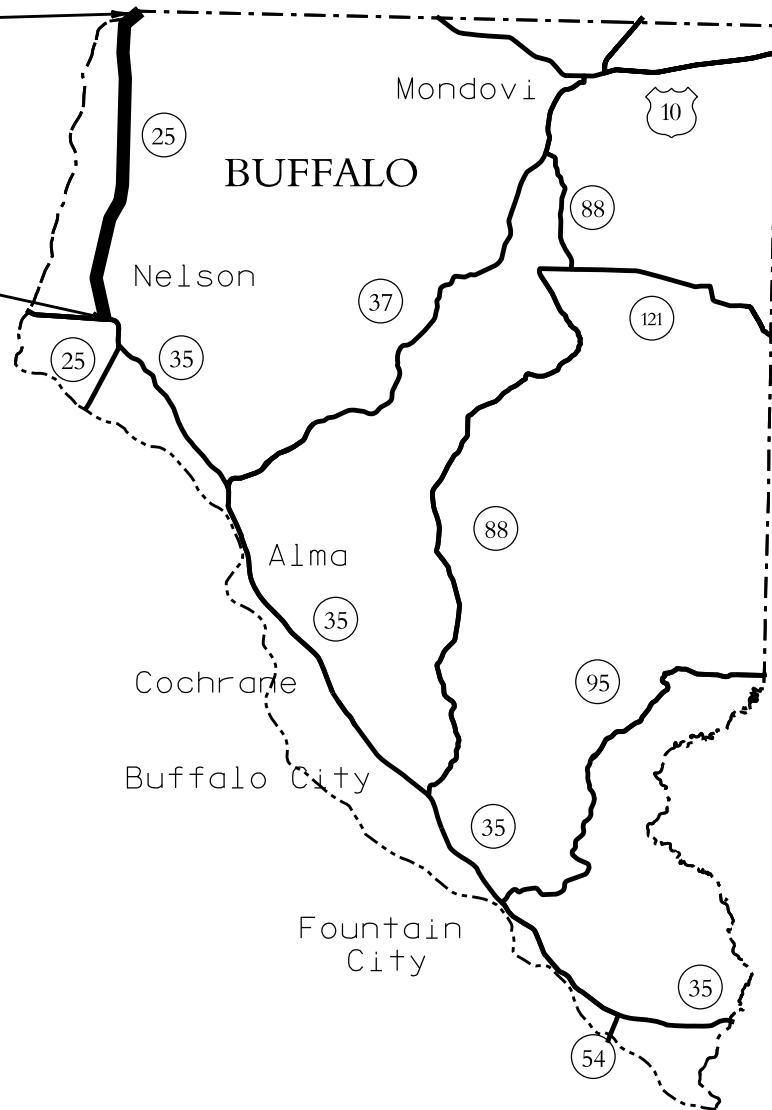
WISCONSIN DNR SPOONER - LIASON

DNR - SERVICE CENTER (W. CENTRAL REGION)
810 WEST MAPLE STREET
SPOONER, WI 54801
PHONE: (715) 635-4229
ATTN: AMY CRONK

WABASHA - DURAND
STH 25
STH 35 TO NCL
C/L MILES: 11.77 *

END
STH 25
STA 621+45

START
STH 25
STA _00+00



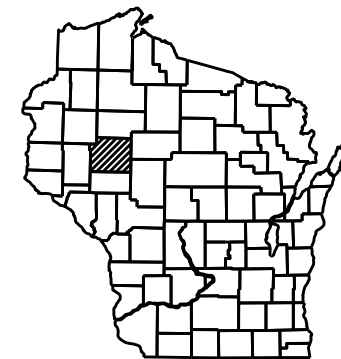
BUFFALO
06



CONSTRUCTION NOTES

MILEAGE RANGES ARE APPROXIMATE.
ACTUAL FIELD CONDITIONS MAY VARY.

*STRUCTURES: SEE GENERAL NOTES.



CHIPPEWA

09



CONSTRUCTION NOTES

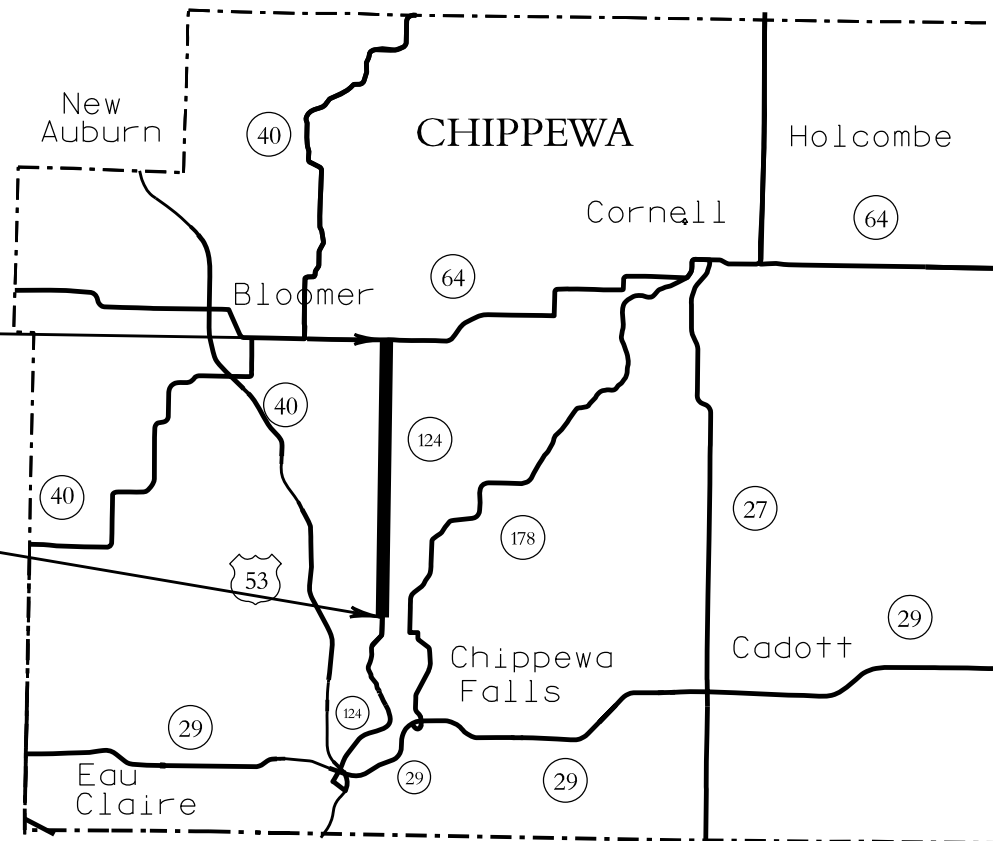
MILEAGE RANGES ARE APPROXIMATE.
ACTUAL FIELD CONDITIONS MAY VARY.

CHIPPEWA FALLS - BLOOMER
STH 124
CTH S - STH 64
C/L MILES: 10.62 *

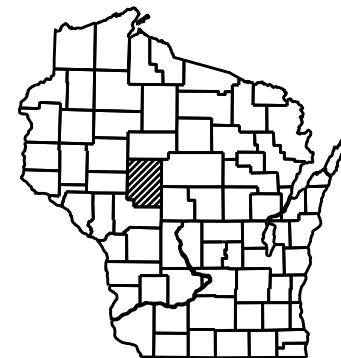
END
STH 124
STA 560+73.6

START
STH 124
STA 00+00

Colfax



*STRUCTURES: SEE GENERAL NOTES.



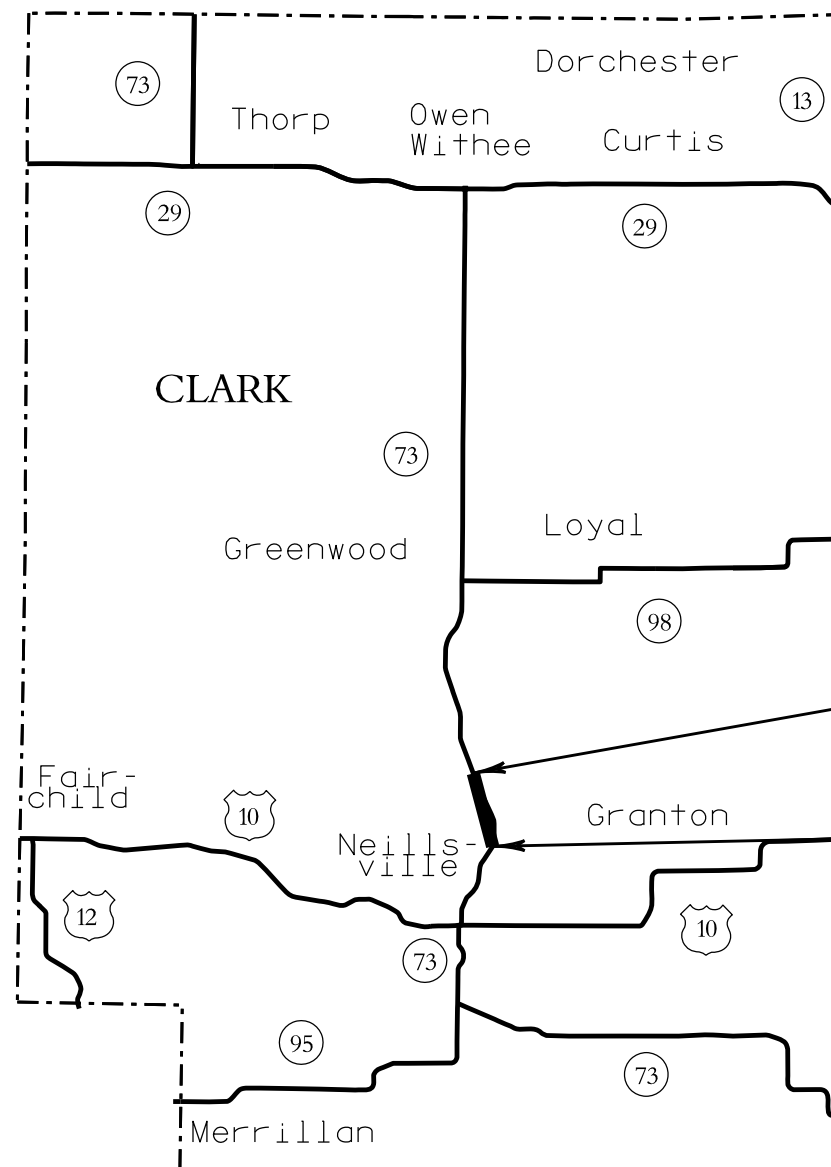
CLARK

10



CONSTRUCTION NOTES

MILEAGE RANGES ARE APPROXIMATE.
ACTUAL FIELD CONDITIONS MAY VARY.



Abbotsford

NEILLSVILLE - GREENWOOD
STH 73
8TH STREET - BIENECK ROAD
C/L MILES: 1.75 *

END
STH 73
STA _92+40

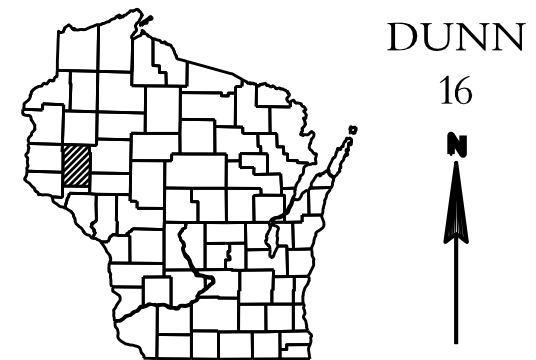
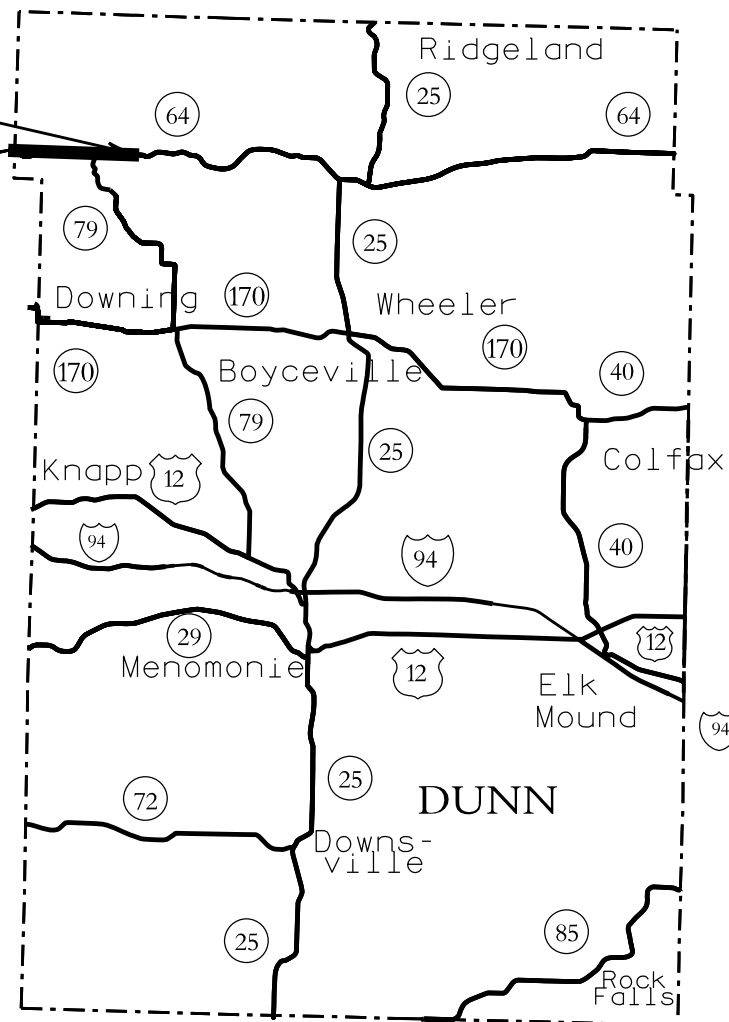
START
STH 73
STA _00+00

*STRUCTURES: SEE GENERAL NOTES.

NEW RICHMOND - BLOOMER
STH 64
WCL - CTH 0
C/L MILES: 6.76 *

END
STH 64
STA 356+92.8

START
STH 64
STA _00+00



CONSTRUCTION NOTES
MILEAGE RANGES ARE APPROXIMATE.
ACTUAL FIELD CONDITIONS MAY VARY.

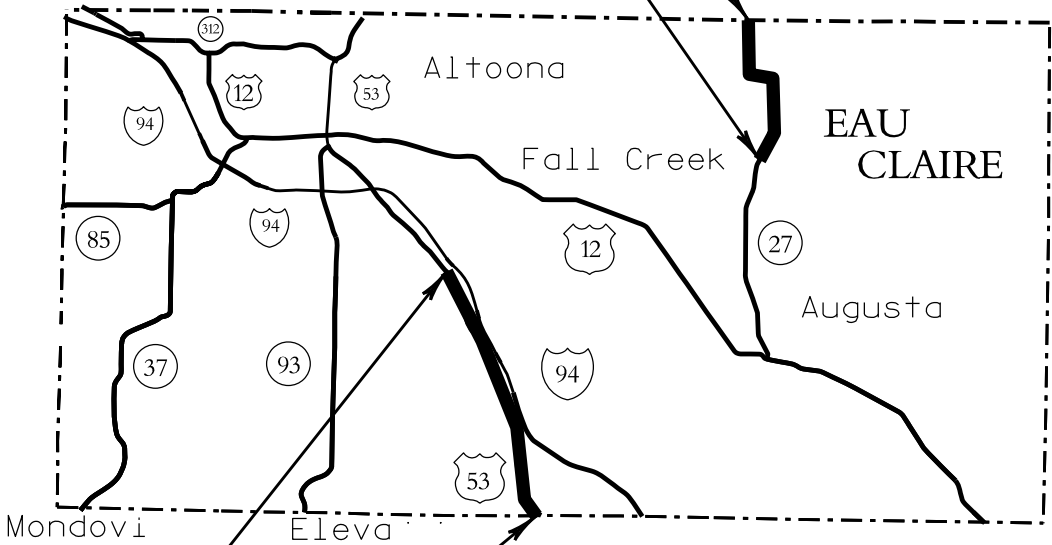
*STRUCTURES: SEE GENERAL NOTES.

AUGUSTA - CADOTT
STH 27
EAU CLAIRE RIVER - NCL

C/L MILES: 8.13 *

END
STH 27
STA 429+26.4

START
STH 27
STA _00+00



END
USH 53
STA 724+94.4

START
USH 53
STA _00+00

OSSEO - EAU CLAIRE
USH 53
SCL - TOWN HALL ROAD

C/L MILES: 13.73 *



EAU CLAIRE

18



CONSTRUCTION NOTES

MILEAGE RANGES ARE APPROXIMATE.
ACTUAL FIELD CONDITIONS MAY VARY.

*STRUCTURES: SEE GENERAL NOTES.

MERRILLAN - BLACK RIVER FALLS
USH 12/ STH 27
STH 95 - IH 94
C/L MILES: 10.17 *

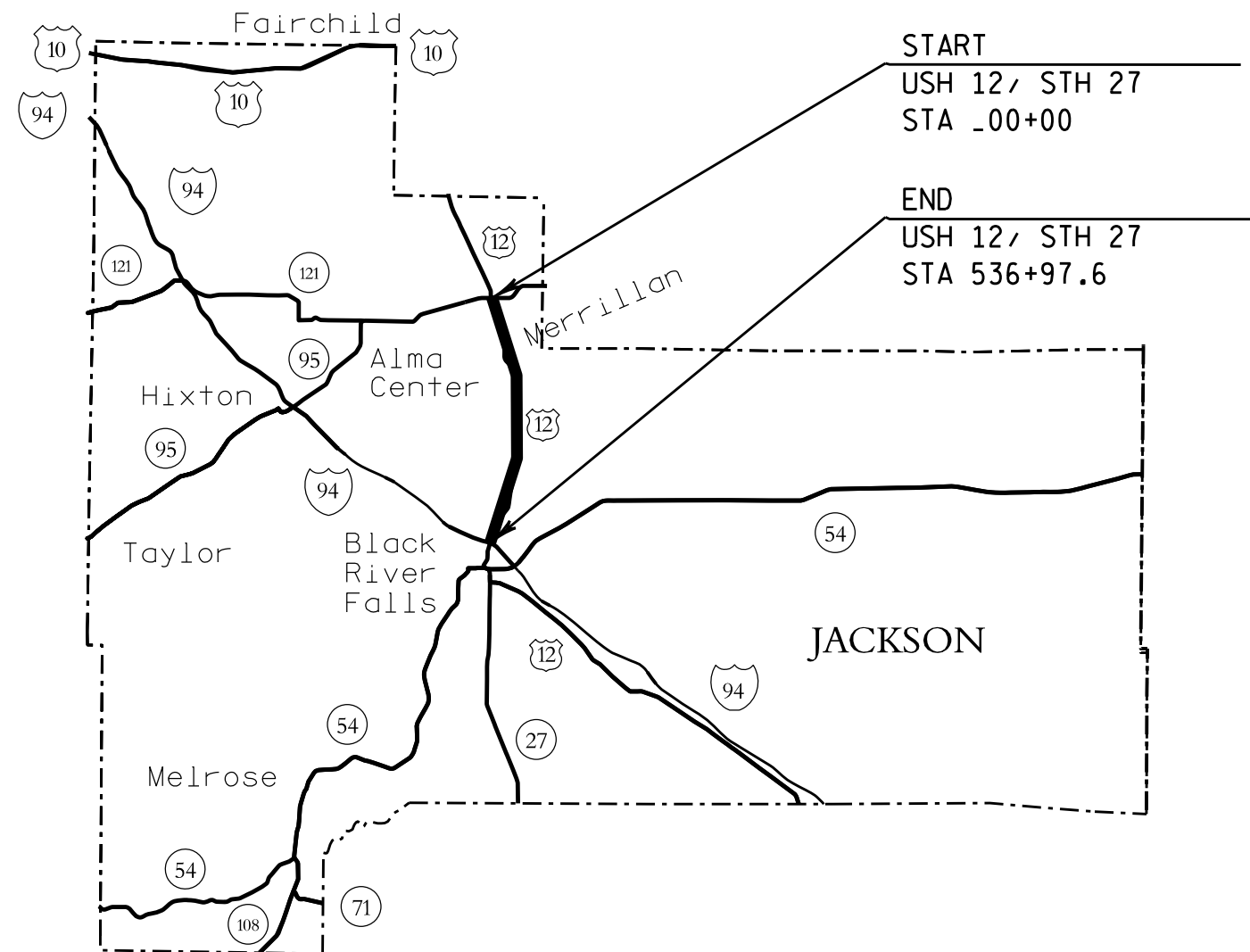


JACKSON

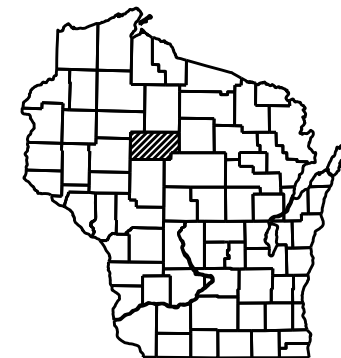
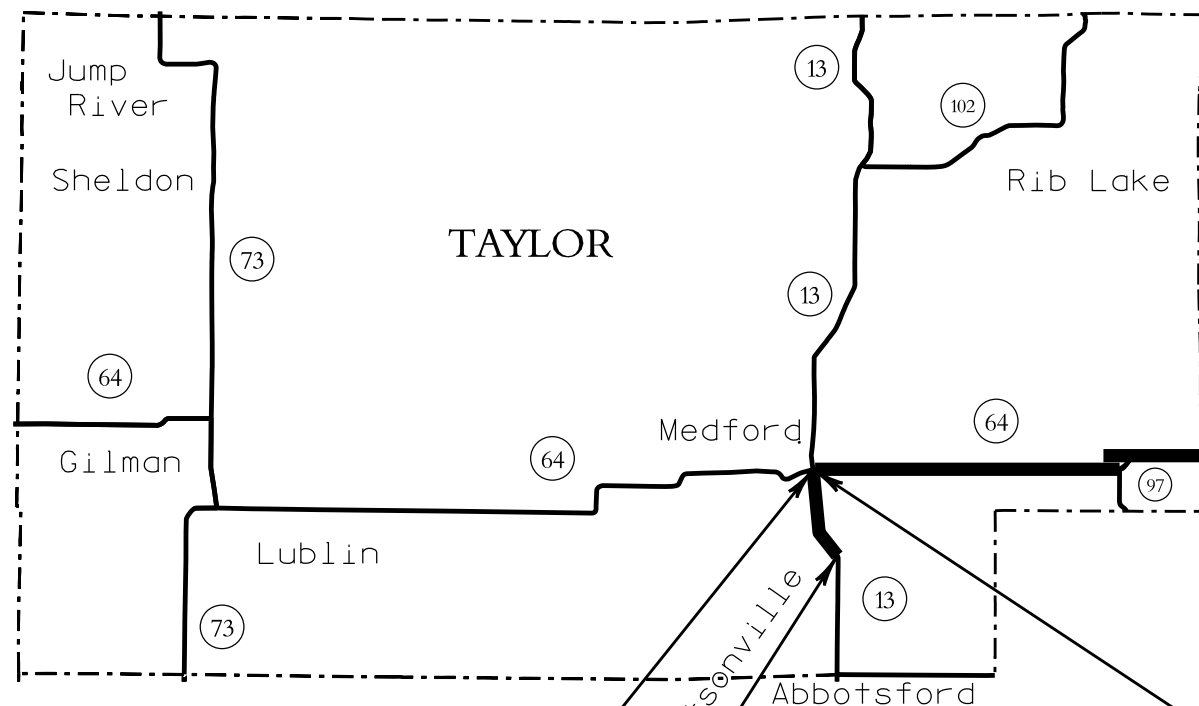
27

**CONSTRUCTION NOTES**

MILEAGE RANGES ARE APPROXIMATE.
ACTUAL FIELD CONDITIONS MAY VARY.



*STRUCTURES: SEE GENERAL NOTES.



TAYLOR

60



CONSTRUCTION NOTES

MILEAGE RANGES ARE APPROXIMATE.
ACTUAL FIELD CONDITIONS MAY VARY.

MEDFORD - MERRILL
STH 64

STH 13 - ECL

C/L MILES: 14.35 *

END

STH 64

STA 757+68

START

STH 64

STA _00+00

END

STH 13

STA 174+76.8

START

STH 13

STA _00+00

STETSONVILLE - MEDFORD
STH 13

CTH A - CTH O

C/L MILES: 3.31 *

*STRUCTURES: SEE GENERAL NOTES.

END
USH 10
STA 544+89.6

START
USH 10
STA _00+00

MONDOVI - OSSEO
USH 10
STH 93 - USH 53 NORTH
C/L MILES: 10.32 *



TREMPEALEAU

61



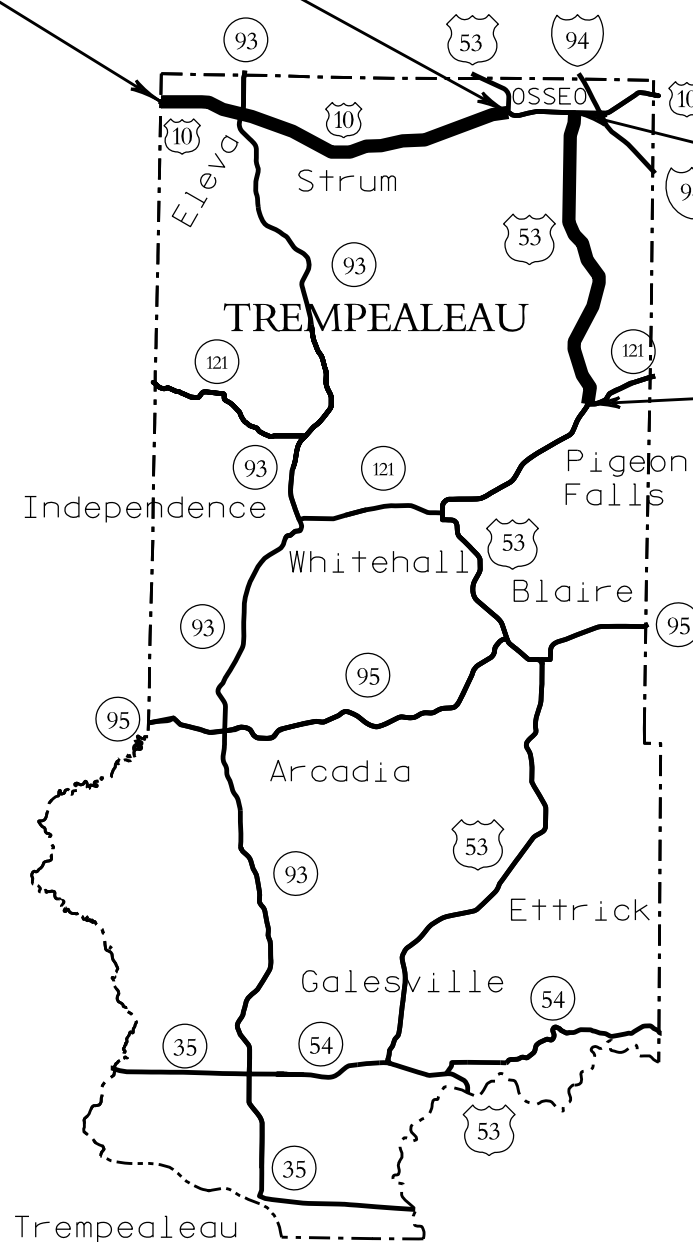
CONSTRUCTION NOTES

MILEAGE RANGES ARE APPROXIMATE.
ACTUAL FIELD CONDITIONS MAY VARY.

END
USH 53
STA 598+75.2

START
USH 53
STA 00+00

PIGEON FALLS - OSSEO
USH 53
STH 121 - USH 10
C/L MILES: 11.34 *



*STRUCTURES: SEE GENERAL NOTES.

DATE 30APR14		E S T I M A T E O F Q U A N T I T I E S			
LINE				9227-01-22	
NUMBER	ITEM	ITEM DESCRIPTION	UNIT	TOTAL	QUANTITY
0010	619.1000	MOBILIZATION 01. 9227-01-22	EACH	1.000	1.000
0020	643.0100	TRAFFIC CONTROL (PROJECT) 01. 9227-01-22	EACH	1.000	1.000
0030	646.0103	PAVEMENT MARKING PAINT 4-INCH	LF	812,688.000	812,688.000
0040	646.0106	PAVEMENT MARKING EPOXY 4-INCH	LF	746,384.000	746,384.000
0050	646.0123	PAVEMENT MARKING PAINT 8-INCH	LF	7,319.000	7,319.000
0060	646.0126	PAVEMENT MARKING EPOXY 8-INCH	LF	1,148.000	1,148.000
0070	649.0100	TEMPORARY PAVEMENT MARKING 4-INCH	LF	69,750.000	69,750.000
0080	SPV.0125	SPECIAL 01. SEALING ASPHALTIC PAVEMENT CRACKS STH 25, STH 35- NCL	MI	11.770	11.770
0090	SPV.0125	SPECIAL 02. SEALING ASPHALTIC PAVEMENT CRACKS STH 124, CTH S-STH 64	MI	10.620	10.620
0100	SPV.0125	SPECIAL 03. SEALING ASPHALTIC PAVEMENT CRACKS STH 73, 8TH ST. -BIENECK RD	MI	1.750	1.750
0110	SPV.0125	SPECIAL 04. SEALING ASPHALTIC PAVEMENT CRACKS STH 64, WCL - CTH 0	MI	6.760	6.760
0120	SPV.0125	SPECIAL 05. SEALING ASPHALTIC PAVEMENT CRACKS STH 27, ECL-NCL	MI	8.130	8.130
0130	SPV.0125	SPECIAL 06. SEALING ASPHALTIC PAVEMENT CRACKS USH 53, SCL-TOWNHALL RD	MI	13.730	13.730
0140	SPV.0125	SPECIAL 07. SEALING ASPHALTIC PAVEMENT CRACKS USH 12/27, STH 95- IH94	MI	10.170	10.170
0150	SPV.0125	SPECIAL 08. SEALING ASPHALTIC PAVEMENT CRACKS STH 13, CTH A- CTH 0	MI	3.310	3.310
0160	SPV.0125	SPECIAL 09. SEALING ASPHALTIC PAVEMENT CRACKS STH 64, STH 13 - ECL	MI	14.350	14.350
0170	SPV.0125	SPECIAL 10. SEALING ASPHALTIC PAVEMENT CRACKS USH 10, STH 93- USH 53	MI	10.320	10.320
0180	SPV.0125	SPECIAL 11. SEALING ASPHALTIC PAVEMENT CRACKS USH 53, STH 121- USH 10	MI	11.340	11.340

MOBILIZATION			
CAT	LOCATION	619. 1000 EACH	REMARKS
0010	PROJECT	1	
TOTAL 0010		1	

TRAFFIC CONTROL (01.9227-01-22)			
CAT	LOCATION	643. 0100 EACH	REMARKS
0010	PROJECT	1	
TOTAL 0010		1	

PAVEMENT MARKING PAINT 4-INCH						
CAT	COUNTY	ROUTE	ROADWAY	LIMITS	YELLOW 646. 0103 LF	WHI TE 646. 0103 LF
0010	BUFFALO	STH 25	WABASHA - DURAND	STH 35 TO NCL	60,880	121,861
0010	CHIPPEWA	STH 124	CHIP FALLS - BLOOMER	CTH S TO STH 64	24,948	95,065
0010	CLARK	STH 73	NEILLSVILLE - GREENWOOD	8TH ST. TO BIENECK ROAD	0	0
0010	DUNN	STH 64	NEW RICHMOND - BLOOMER	WCL TO CTH 0	0	0
0010	EAU CLAIRE	STH 27	AUGUSTA - CADOTT	EC RIVER TO NCL	55,575	81,625
0010	EAU CLAIRE	USH 53	OSSEO - EAU CLAIRE	SCL TO TOWNHALL ROAD	93,290	148,044
0010	JACKSON	USH 12/27	MERRILLAN - BR FALLS	STH 95 TO IH 94	0	0
0010	TAYLOR	STH 13	STETSONVILLE - MEDFORD	CTH A TO CTH 0	0	0
0010	TAYLOR	STH 64	MEDFORD - MERRILL	STH 13 TO ECL	0	0
0010	TREMPEALEAU	USH 10	MONDOVI - OSSEO	STH 93 TO USH 53	27,867	103,533
0010	TREMPEALEAU	USH 53	PIGEON FALLS - OSSEO	STH 121 TO USH 10	0	0
SUB-TOTAL					262,560 YELLOW	550,128 WHI TE
TOTAL 0010					812,688	

TEMPORARY PAVEMENT MARKING 4-INCH					
CAT	COUNTY	ROUTE	ROADWAY	649. 0100 LF	REMARKS
0010	VARI ES	VARI ES	UNDI STRI BUTED	69,750	YELLOW CENTERLINE AS DIRECTED BY THE PROJECT ENGINEER
TOTAL 0010				69,750	

SPECIAL(01. SEALING ASPHALTIC PAVEMENT CRACKS, STH 25, STH 35 - NCL)							
CAT	STATION	TO	STATION	ROUTE	LIMITS	SPV. 0125(01) MI	REMARKS
0010	0+00	-	621+45	STH 25	STH 35 - NCL	11.77	BUFFALO CO.
					TOTAL 0010	11.77	

PAVEMENT MARKING EPOXY 4-INCH						
CAT	COUNTY	ROUTE	ROADWAY	LIMITS	YELLOW 646. 0106 LF	WHI TE 646. 0106 LF
0010	BUFFALO	STH 25	WABASHA - DURAND	STH 35 TO NCL	0	0
0010	CHIPPEWA	STH 124	CHIP FALLS - BLOOMER	CTH S TO STH 64	0	0
0010	CLARK	STH 73	NEILLSVILLE - GREENWOOD	8TH ST. TO BIENECK ROAD	9,895	12,424
0010	DUNN	STH 64	NEW RICHMOND - BLOOMER	WCL TO CTH 0	60,015	68,866
0010	EAU CLAIRE	STH 27	AUGUSTA - CADOTT	EC RIVER TO NCL	0	0
0010	EAU CLAIRE	USH 53	OSSEO - EAU CLAIRE	SCL TO TOWNHALL ROAD	0	0
0010	JACKSON	USH 12/27	MERRILLAN - BR FALLS	STH 95 TO IH 94	39,576	95,664
0010	TAYLOR	STH 13	STETSONVILLE - MEDFORD	CTH A TO CTH 0	29,291	30,524
0010	TAYLOR	STH 64	MEDFORD - MERRILL	STH 13 TO ECL	72,320	146,713
0010	TREMPEALEAU	USH 10	MONDOVI - OSSEO	STH 93 TO USH 53	0	0
0010	TREMPEALEAU	USH 53	PIGEON FALLS - OSSEO	STH 121 TO USH 10	68,844	112,252
SUB-TOTAL					279,941 YELLOW	466,443 WHI TE
TOTAL 0010					746,384	

PAVEMENT MARKING PAINT 8-INCH

646.0123						
CAT	COUNTY	ROUTE	ROADWAY	LIMITS	LF	REMARKS
0010	BUFFALO	STH 25	WABASHA - DURAND	STH 35 TO NCL	488	WHI TE
0010	CHI PPEWA	STH 124	CHI P FALLS - BLOOMER	CTH S TO STH 64	5,356	WHI TE
0010	CLARK	STH 73	NEI LLSVI LLE - GREENWOOD	8TH ST. TO BIENECK ROAD	0	WHI TE
0010	DUNN	STH 64	NEW RICHMOND - BLOOMER	WCL TO CTH 0	0	WHI TE
0010	EAU CLAIRE	STH 27	AUGUSTA - CADOTT	EC RIVER TO NCL	188	WHI TE
0010	EAU CLAIRE	USH 53	OSSEO - EAU CLAIRE	SCL TO TOWNHALL ROAD	675	WHI TE
0010	JACKSON	USH 12/27	MERRILLAN - BR FALLS	STH 95 TO IH 94	0	WHI TE
0010	TAYLOR	STH 13	STETSONVILLE - MEDFORD	CTH A TO CTH 0	0	WHI TE
0010	TAYLOR	STH 64	MEDFORD - MERRILL	STH 13 TO ECL	0	WHI TE
0010	TREMPEALEAU	USH 10	MONDOVI - OSSEO	STH 93 TO USH 53	612	WHI TE
0010	TREMPEALEAU	USH 53	PIGEON FALLS - OSSEO	STH 121 TO USH 10	0	WHI TE
SUB-TOTAL					7,319	WHI TE
TOTAL 0010					7,319	

PAVEMENT MARKING EPOXY 8-INCH

646.0126						
CAT	COUNTY	ROUTE	ROADWAY	LIMITS	LF	REMARKS
0010	BUFFALO	STH 25	WABASHA - DURAND	STH 35 TO NCL	0	WHI TE
0010	CHI PPEWA	STH 124	CHI P FALLS - BLOOMER	CTH S TO STH 64	0	WHI TE
0010	CLARK	STH 73	NEI LLSVI LLE - GREENWOOD	8TH ST. TO BIENECK ROAD	0	WHI TE
0010	DUNN	STH 64	NEW RICHMOND - BLOOMER	WCL TO CTH 0	0	WHI TE
0010	EAU CLAIRE	STH 27	AUGUSTA - CADOTT	EC RIVER TO NCL	0	WHI TE
0010	EAU CLAIRE	USH 53	OSSEO - EAU CLAIRE	SCL TO TOWNHALL ROAD	0	WHI TE
0010	JACKSON	USH 12/27	MERRILLAN - BR FALLS	STH 95 TO IH 94	0	WHI TE
0010	TAYLOR	STH 13	STETSONVILLE - MEDFORD	CTH A TO CTH 0	469	WHI TE
0010	TAYLOR	STH 64	MEDFORD - MERRILL	STH 13 TO ECL	0	WHI TE
0010	TREMPEALEAU	USH 10	MONDOVI - OSSEO	STH 93 TO USH 53	0	WHI TE
0010	TREMPEALEAU	USH 53	PIGEON FALLS - OSSEO	STH 121 TO USH 10	679	WHI TE
SUB-TOTAL					1,148	WHI TE
TOTAL 0010					1,148	

3

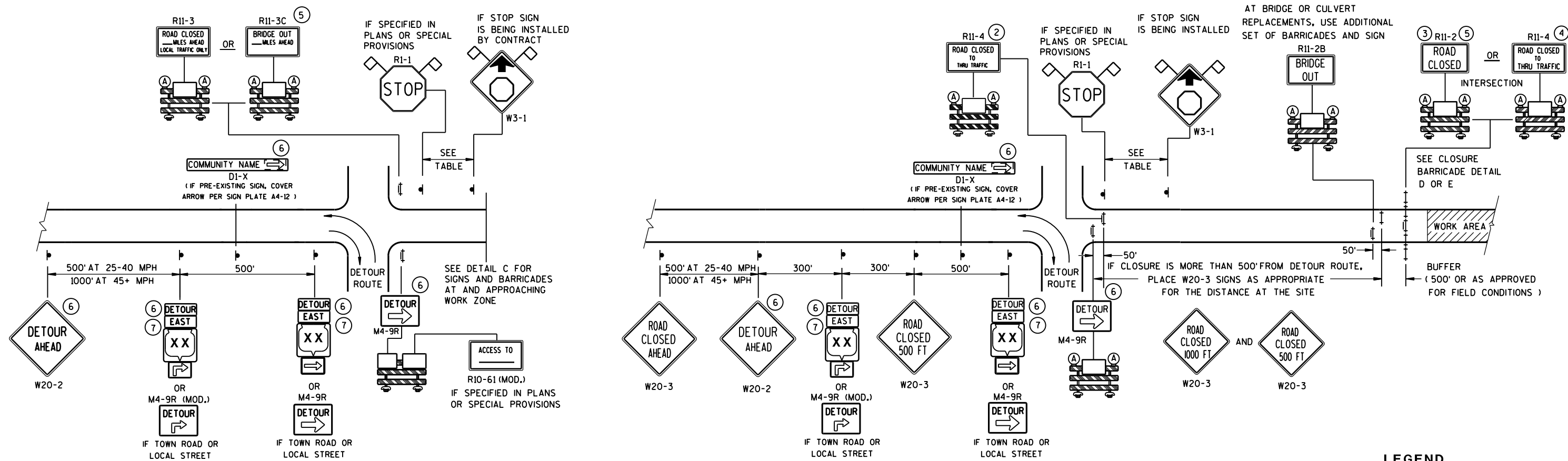
SPECIAL(02. SEALING ASPHALTIC PAVEMENT CRACKS. STH 124. CTH S - STH 64)						
CAT	STATION	TO STATION	ROUTE	LIMITS	SPV. 0125 (2) MI	REMARKS
0010	0+00	- 560+73.6	STH 124	CTH S - STH 64	10.62	CHIPPewa CO.
				TOTAL 0010	10.62	
SPECIAL(03. SEALING ASPHALTIC PAVEMENT CRACKS. STH 73. 8TH ST. - BEINECK ROAD)						
CAT	STATION	TO STATION	ROUTE	LIMITS	SPV. 0125 (3) MI	REMARKS
0010	0+00	- 92+40.0	STH 73	8TH ST. - BEINECK ROAD	1.75	CLARK CO.
				TOTAL 0010	1.75	
SPECIAL(04. SEALING ASPHALTIC PAVEMENT CRACKS. STH 64. WCL - CTH 0)						
CAT	STATION	TO STATION	ROUTE	LIMITS	SPV. 0125 (4) MI	REMARKS
0010	0+00	- 356+92.8	STH 64	WCL - CTH 0	6.76	DUNN CO.
				TOTAL 0010	6.76	
SPECIAL(05. SEALING ASPHALTIC PAVEMENT CRACKS. STH 27. ECL - NCL)						
CAT	STATION	TO STATION	ROUTE	LIMITS	SPV. 0125 (5) MI	REMARKS
0010	0+00	- 429+26.4	STH 27	ECL - NCL	8.13	EAU CLAIRE CO.
				TOTAL 0010	8.13	
SPECIAL(06. SEALING ASPHALTIC PAVEMENT CRACKS. USH 53. SCL - TOWNHALL ROAD)						
CAT	STATION	TO STATION	ROUTE	LIMITS	SPV. 0125 (6) MI	REMARKS
0010	0+00	- 729+94.4	USH 53	SCL - TOWNHALL ROAD	13.73	EAU CLAIRE CO.
				TOTAL 0010	13.73	

SPECIAL(07. SEALING ASPHALTIC PAVEMENT CRACKS. USH 12/27. STH 95 - IH 94)						
CAT	STATION	TO STATION	ROUTE	LIMITS	SPV. 0125 (7) MI	REMARKS
0010	0+00	- 536+97.6	USH12/27	STH 95 - IH 94	10.17	JACKSON CO.
				TOTAL 0010	10.17	
SPECIAL(08. SEALING ASPHALTIC PAVEMENT CRACKS. STH 13. CTH A - CTH 0)						
CAT	STATION	TO STATION	ROUTE	LIMITS	SPV. 0125 (8) MI	REMARKS
0010	0+00	- 174+76.8	STH 13	CTH A - CTH 0	3.31	TAYLOR CO.
				TOTAL 0010	3.31	
SPECIAL(09. SEALING ASPHALTIC PAVEMENT CRACKS. STH 64. STH 13 - ECL)						
CAT	STATION	TO STATION	ROUTE	LIMITS	SPV. 0125 (9) MI	REMARKS
0010	0+00	- 757+68.0	STH 64	STH 13 - ECL	14.35	TAYLOR CO.
				TOTAL 0010	14.35	
SPECIAL(10. SEALING ASPHALTIC PAVEMENT CRACKS. USH 10. STH 93 - USH 53)						
CAT	STATION	TO STATION	ROUTE	LIMITS	SPV. 0125 (10) MI	REMARKS
0010	0+00	- 544+89.6	USH 10	STH 93 - USH 53	10.32	TREMPEALEU CO.
				TOTAL 0010	10.32	
SPECIAL(11. SEALING ASPHALTIC PAVEMENT CRACKS. USH 53. STH 121 - USH 10)						
CAT	STATION	TO STATION	ROUTE	LIMITS	SPV. 0125 (11) MI	REMARKS
0010	0+00	- 598+75.2	USH 53	STH 121 - USH 10	11.34	TREMPEALEU CO.
				TOTAL 0010	11.34	

3

Standard Detail Drawing List

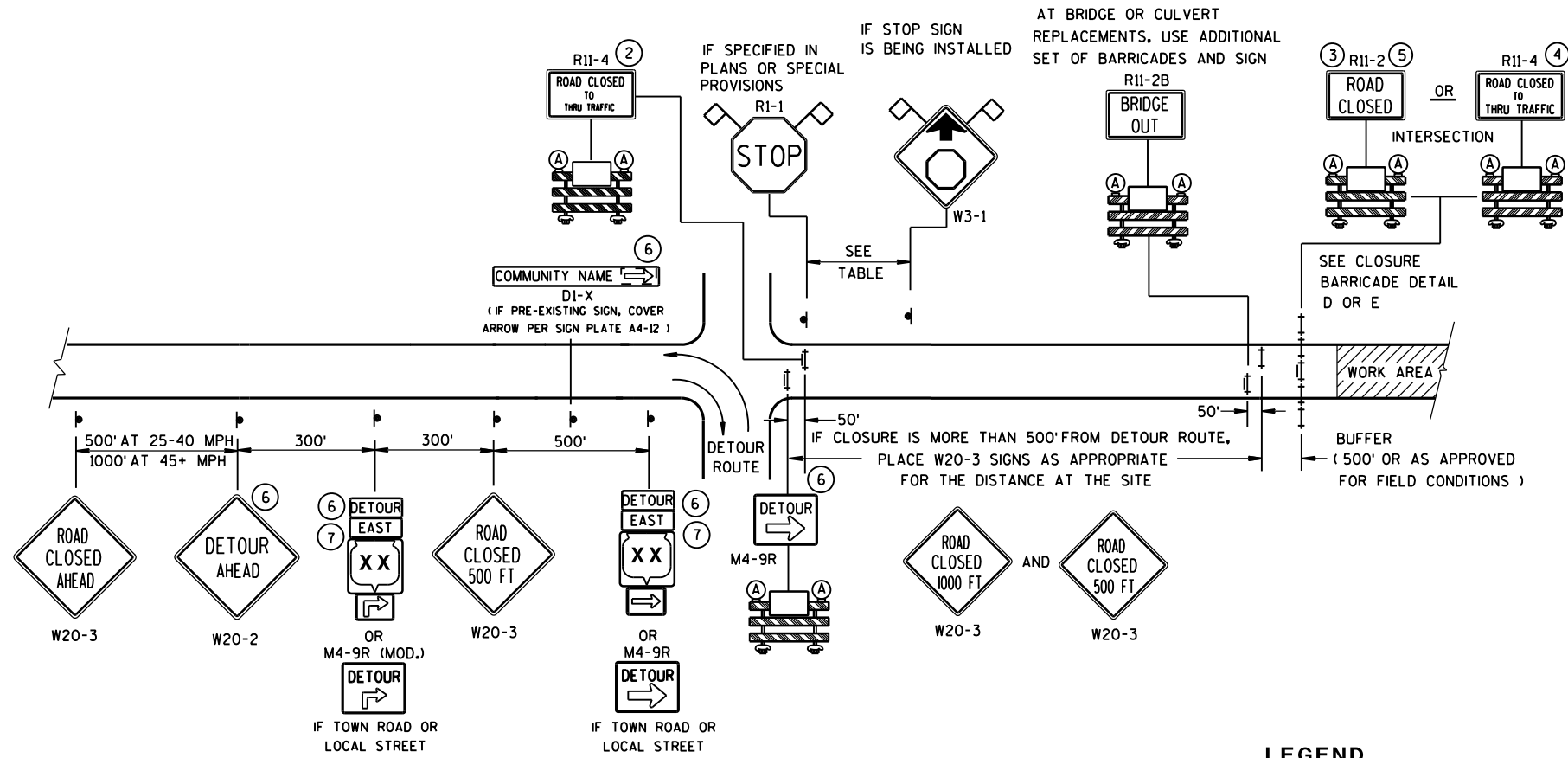
15C02-05A	BARRICADES AND SIGNS FOR MAINLINE CLOSURES
15C02-05B	BARRICADES AND SIGNS FOR MAINLINE CLOSURES
15C08-16A	PAVEMENT MARKING (MAINLINE)
15C12-04	TRAFFIC CONTROL FOR LANE CLOSURE (SUITABLE FOR MOVING OPERATIONS)
15C19-02A	MOVING PAVEMENT MARKING OPERATION TWO-LANE TWO-WAY ROADWAY



DETAIL A

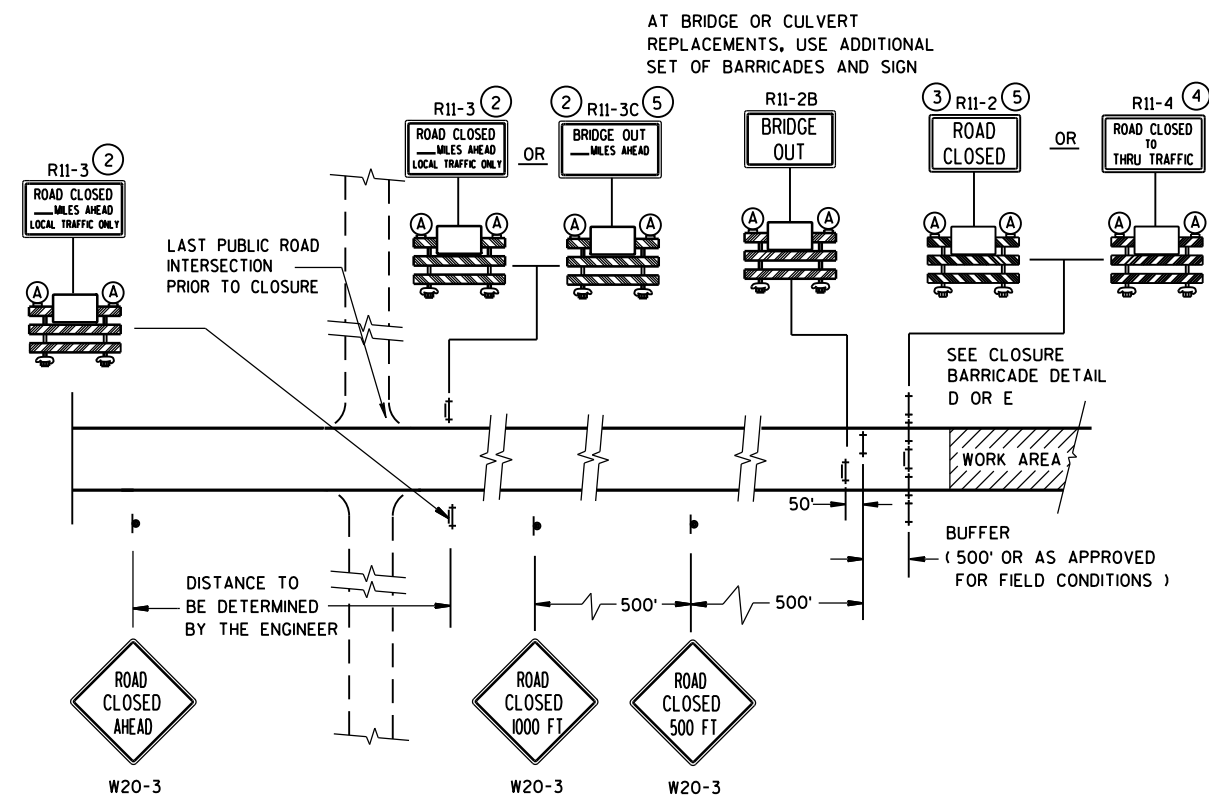
MAINLINE CLOSURE WITH POSTED DETOUR

WORK ZONE GREATER THAN 1/2 MILE FROM DETOUR ROUTE (1000 FEET IF URBAN)



DETAIL B
MAINLINE CLOSURE WITH POSTED DETOUR





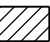








WORK ZONE LESS THAN 1/2 MILE FROM DETOUR ROUTE (1000 FEET IF URBAN)



DETAIL C

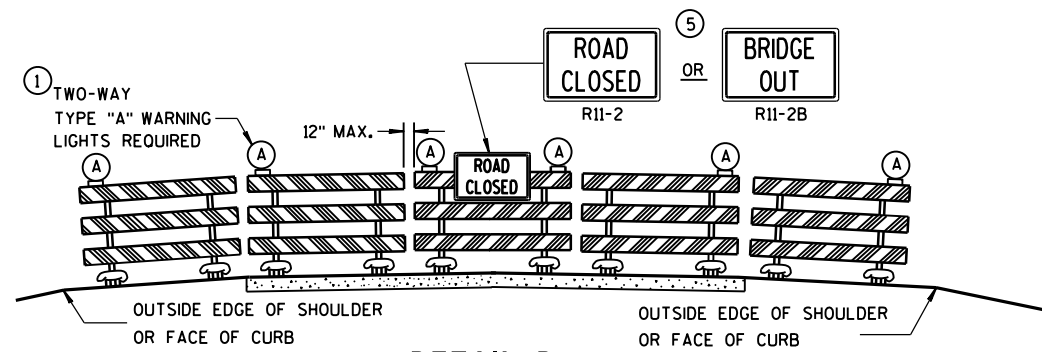
MAINLINE CLOSURE, NO POSTED DETOUR

SPEED LIMIT (MPH)	"STOP AHEAD" ADVANCE WARNING DISTANCE (FT)
25	200
30	200
35	350
40	350
45	500
50	550
55	750

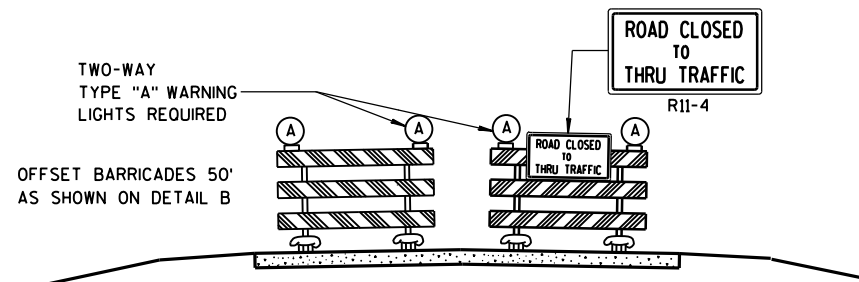
- ## LEGEND
-  SIGN ON PERMANENT SUPPORT
-  TYPE III BARRICADE
-  TYPE III BARRICADE WITH ATTACHED SIGN
-  TYPE "A" WARNING LIGHT (FLASHING)
-  WORK AREA
-  M4-8
 M3-X
-  M1-4 OR  M1-5A OR  M1-6
-  M05-1 OR  M06-1
-  FLAGS, 16" X 16" MIN., (ORANGE)

SEE SDD 15C2-SHEET "b"
FOR GENERAL NOTES
AND FOOTNOTES ① THROUGH ⑦

<p>BARRICADES AND SIGNS FOR MAINLINE CLOSURES</p>	
<p>STATE OF WISCONSIN DEPARTMENT OF TRANSPORTATION</p>	
<p><u>8/2013</u> DATE</p>	<p><u>/S/ Travis Feltes</u> STATE TRAFFIC ENGINEER OF DESIGN</p>
<p>FHWA</p>	



DETAIL D
ROAD CLOSURE BARRICADE DETAIL
APPROACH VIEW



DETAIL E
LANE CLOSURE BARRICADE DETAIL
APPROACH VIEW

SEE SDD 15C2-SHEET "a" FOR LEGEND

GENERAL NOTES

THE EXACT NUMBER, LOCATION, AND SPACING OF ALL SIGNS AND BARRICADES SHALL BE ADJUSTED TO FIT FIELD CONDITIONS AS APPROVED BY THE ENGINEER.

ANY SIGNS TEMPORARY OR EXISTING, WHICH CONFLICT WITH TRAFFIC CONTROL "IN USE" SHALL BE REMOVED OR COVERED AS NEEDED AND AS APPROVED BY THE ENGINEER.

THE SPACING BETWEEN TRAFFIC CONTROL SIGNS SHOULD BE ADJUSTED TO NOT CONFLICT WITH AND SHOULD PROVIDE A DESIRABLE MINIMUM OF 200 FEET CLEARANCE TO EXISTING SIGNS THAT WILL REMAIN IN PLACE.

BARRICADES THAT MUST BE MOVED FOR A WORK OPERATION SHALL BE IMMEDIATELY RE-ESTABLISHED UPON COMPLETION OF THE OPERATION OR, FOR CONTINUING OPERATIONS, AT THE END OF EACH WORKING DAY.

SIGNS THAT WILL BE IN PLACE LESS THAN 7 CONTINUOUS DAYS AND NIGHTS MAY BE MOUNTED ON PORTABLE SUPPORTS.

ALL TYPE III BARRICADES SHALL HAVE RAILS REFLECTORIZED ON BOTH FACES. STRIPES SHALL BE PROPERLY SLOPED DOWN TOWARD THE TRAFFIC SIDE OR AS SHOWN IN THE ROAD CLOSURE BARRICADE DETAIL D FOR FULL ROAD CLOSURES.

TYPE "A" LOW-INTENSITY FLASHING WARNING LIGHTS SHALL BE VISIBLE ON BOTH SIDES OF THE BARRICADE.

THE R11-2, R11-3, M4-9, R11-4 AND R10-61 SIGNS PLACED ON BARRICADES SHALL COVER NO MORE THAN THE TOP RAIL. THE SIGNS SHALL NOT COVER ANY PORTION OF THE MIDDLE OR BOTTOM RAILS.

"WO" AND "MO" SIGNS ARE THE SAME AS "W" AND "M" SIGNS EXCEPT THE BACKGROUND IS ORANGE.

ALL SIGNS SHALL BE 48" X 48" UNLESS OTHERWISE NOTED BELOW:

R11-2 SHALL BE 48" X 30".

R11-3, R11-4 AND R10-61 SHALL BE 60" X 30".

M4-9 SHALL BE 30" X 24".

M3-X SHALL BE 24" X 12". (36" X 18" IF NEEDED TO MATCH EXISTING SIGNS.)

M4-8 SHALL BE 24" X 12". (30" X 15" IF NEEDED TO MATCH EXISTING SIGNS.)

M1-4, M1-5A, AND M1-6 SHALL BE 24" X 24". (36" X 36" IF NEEDED TO MATCH EXISTING SIGNS.)

M05-1 AND M06-1 SHALL BE 21" X 21". (30" X 30" IF NEEDED TO MATCH EXISTING SIGNS.)

D1-X SHALL BE AS SHOWN ON SPECIFIC PROJECT SIGNING DETAIL SHEETS.

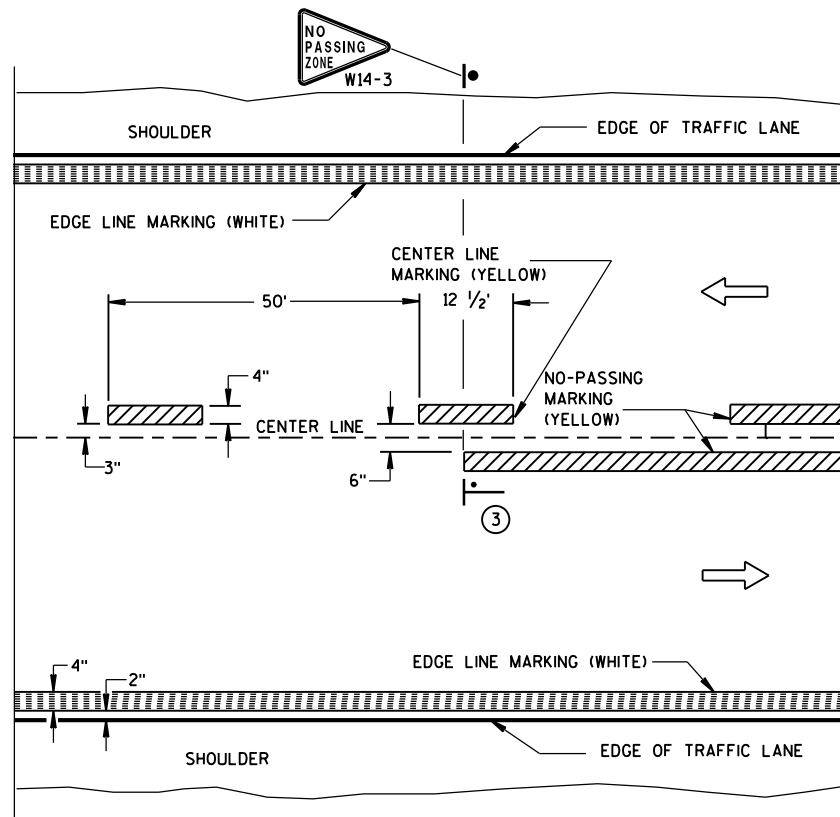
R1-1 SHALL BE 36" X 36".

- ① TWO WARNING LIGHTS SHALL BE PROVIDED ON THE CENTER BARRICADE AND A MINIMUM OF ONE WARNING LIGHT SHALL BE PROVIDED ON EACH OF THE OTHER BARRICADES WITHIN THE ROADWAY LIMITS. SPACING OF THE WARNING LIGHTS SHALL BE UNIFORM TO THE EDGE OF ROADWAY AS SHOWN (APPROX. 8-FOOT LIGHT SPACING).
- ② THESE SIGNS AND BARRICADES ARE NOT REQUIRED IF ROAD CLOSURE BEGINS AT INTERSECTION.
- ③ FOR ROAD CLOSURE WITHOUT LOCAL ACCESS TO PROJECT, SEE ROAD CLOSURE BARRICADE DETAIL D.
- ④ FOR ROAD CLOSURE WITH LOCAL ACCESS TO PROJECT, SEE LANE CLOSURE BARRICADE DETAIL E.
- ⑤ FOR BRIDGE OR CULVERT REPLACEMENTS, SUBSTITUTE "BRIDGE OUT" INSTEAD OF "ROAD CLOSED" ON R11-2 AND R11-3 SIGNS.
- ⑥ INSTALL DETOUR AND COMMUNITY GUIDE SIGNS AND ARROWS ONLY IF SPECIFIED IN THE CONTRACT. IF THERE ARE EXISTING ROUTE MARKER ASSEMBLIES THAT WILL REMAIN IN PLACE, ADJUST THE LOCATION OF THE DETOUR ROUTE SIGNS TO CORRESPOND WITH THE EXISTING ASSEMBLIES. MODIFY EXISTING SIGNS WHERE POSSIBLE. SEE SPECIFIC PROJECT DETOUR SIGNING DETAIL SHEETS. IF DETOUR SIGNS ARE BEING INSTALLED BY OTHERS, PLACE THE CONTRACTED TRAFFIC CONTROL SIGNS TO ALLOW FOR PLACEMENT OF ALL WARNING, DETOUR AND GUIDE SIGNS AS SHOWN.
- ⑦ "EAST" CARDINAL DIRECTION MARKERS AND RIGHT TURN ARROWS ARE SHOWN. USE OTHER CARDINAL DIRECTIONS AND ARROWS AS APPROPRIATE.

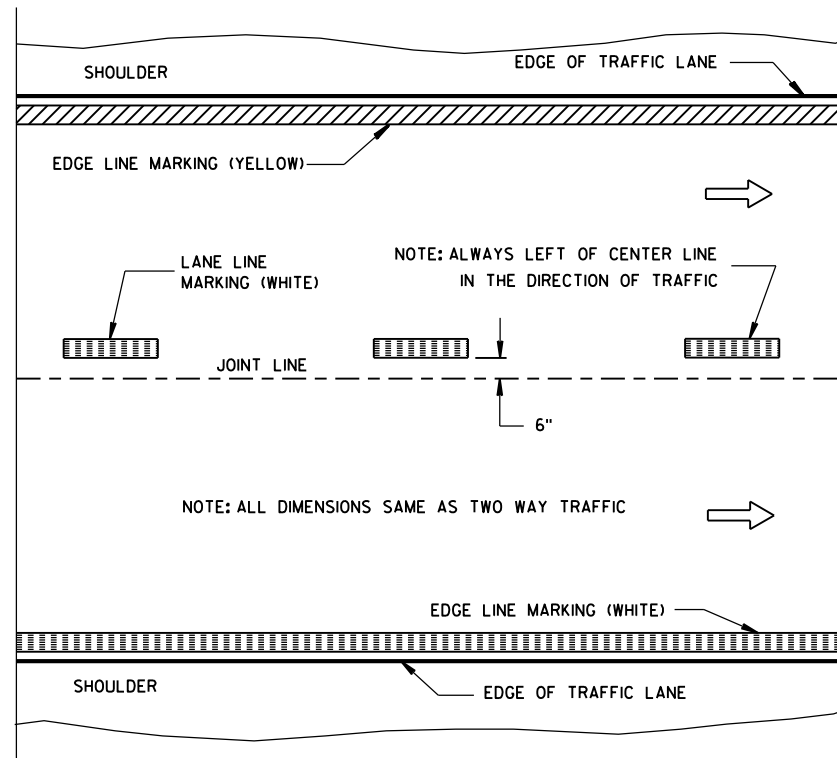
**BARRICADES AND SIGNS
FOR
MAINLINE CLOSURES**

**STATE OF WISCONSIN
DEPARTMENT OF TRANSPORTATION**

8/2013 /S/ Travis Feltes
DATE STATE TRAFFIC ENGINEER OF DESIGN
FHWA

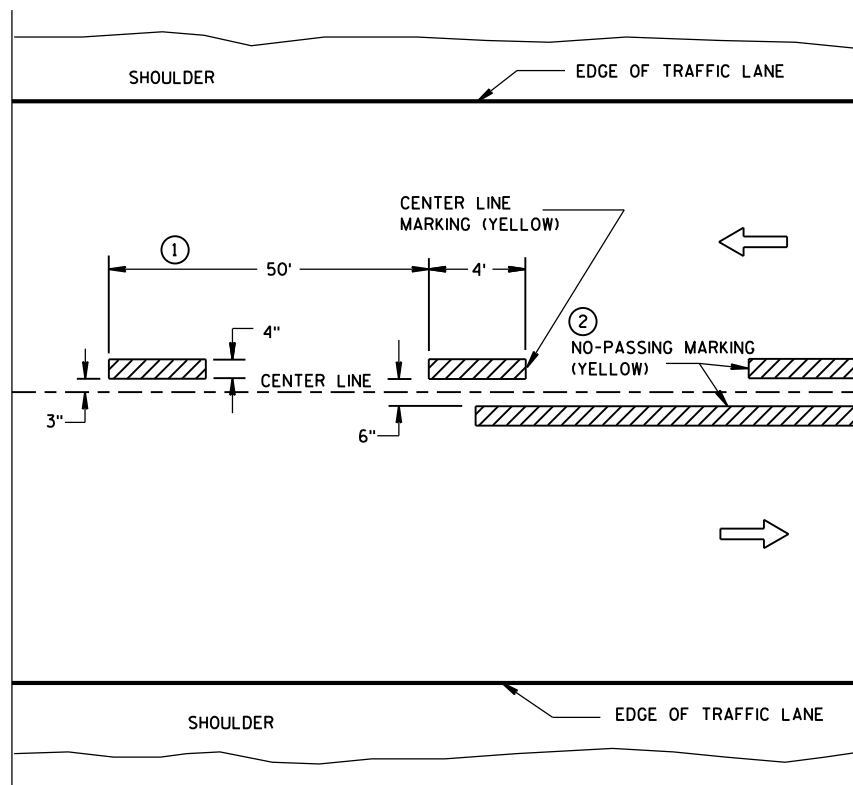


TWO WAY TRAFFIC

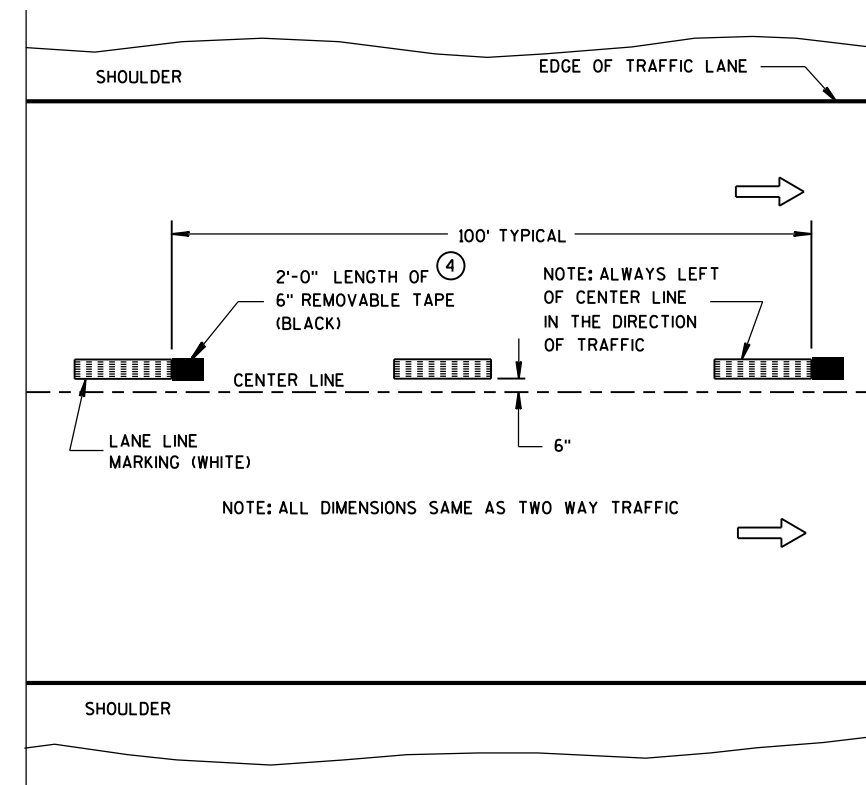


ONE WAY TRAFFIC

PERMANENT PAVEMENT MARKING



TWO WAY TRAFFIC



ONE WAY TRAFFIC

TEMPORARY (INTERMEDIATE) PAVEMENT MARKING
(SHOWS CYCLE FOR TEMPORARY CENTER LINE OR TEMPORARY LANE LINE MARKING)

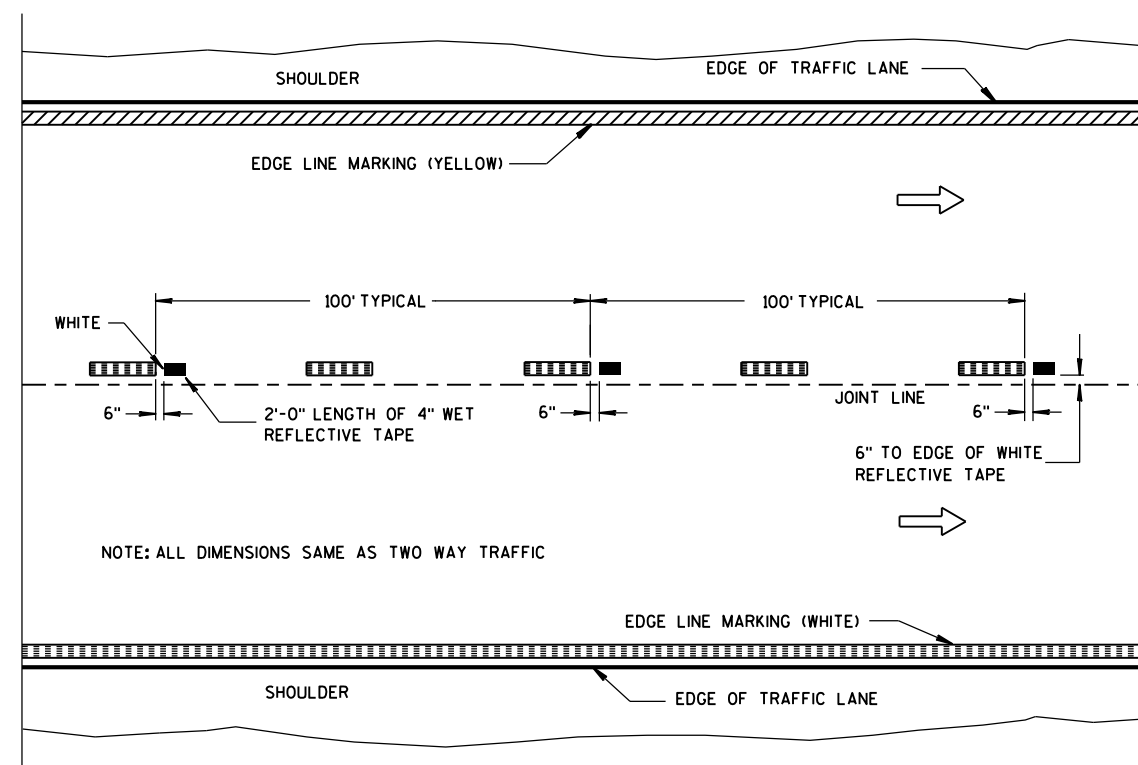
GENERAL NOTES

DETAILS OF CONSTRUCTION NOT SHOWN ON THIS DRAWING SHALL CONFORM TO STANDARD SPECIFICATIONS AND SPECIAL PROVISIONS.

- ① HALF CYCLE LENGTHS (25'±) WITH 2' MINIMUM STRIPE LENGTHS SHALL BE PROVIDED ON ROADWAYS (INCLUDING TEMPORARY TRAVELED WAYS) WITH REVERSE CURVATURE, CURVATURE OF OVER 5 DEGREES OR WHEN DIRECTED BY THE ENGINEER TO MARK UNUSUAL ALIGNMENT OF THE TRAVELED WAY.
- ② NO PASSING ZONE TEMPORARY PAVEMENT MARKING IS REQUIRED TO BE PLACED, WHERE APPROPRIATE, ALONG WITH CENTERLINE TEMPORARY PAVEMENT MARKING WHEN A SAME DAY PERMANENT PAVEMENT MARKING ITEM IS INCLUDED IN THE CONTRACT.
- ③ NO PASSING ZONE MARKINGS ARE PLACED ACCORDING TO "T" MARKINGS. IF EXISTING NO PASSING ZONE W14-3 SIGNS ARE BEYOND 50 FEET IN EITHER DIRECTION, THE SIGNS SHALL BE MOVED TO THE "T" MARKINGS.
- ④ CONCRETE ONLY.

NOTE

ARROW SYMBOL (→) SHOWS DIRECTION OF TRAVEL



WET REFLECTIVE TAPE SUPPLEMENT TO
SPRAYED OR NON WET REFLECTIVE TAPE LANE LINE

LEGEND

- "T" MARKING
- POST MOUNTED SIGN


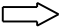


PAVEMENT MARKING
(MAINLINE)

STATE OF WISCONSIN
DEPARTMENT OF TRANSPORTATION

APPROVED
5-13-2013
DATE
FHWA

/S/ Travis Feltes
STATE TRAFFIC ENGINEER

LEGEND

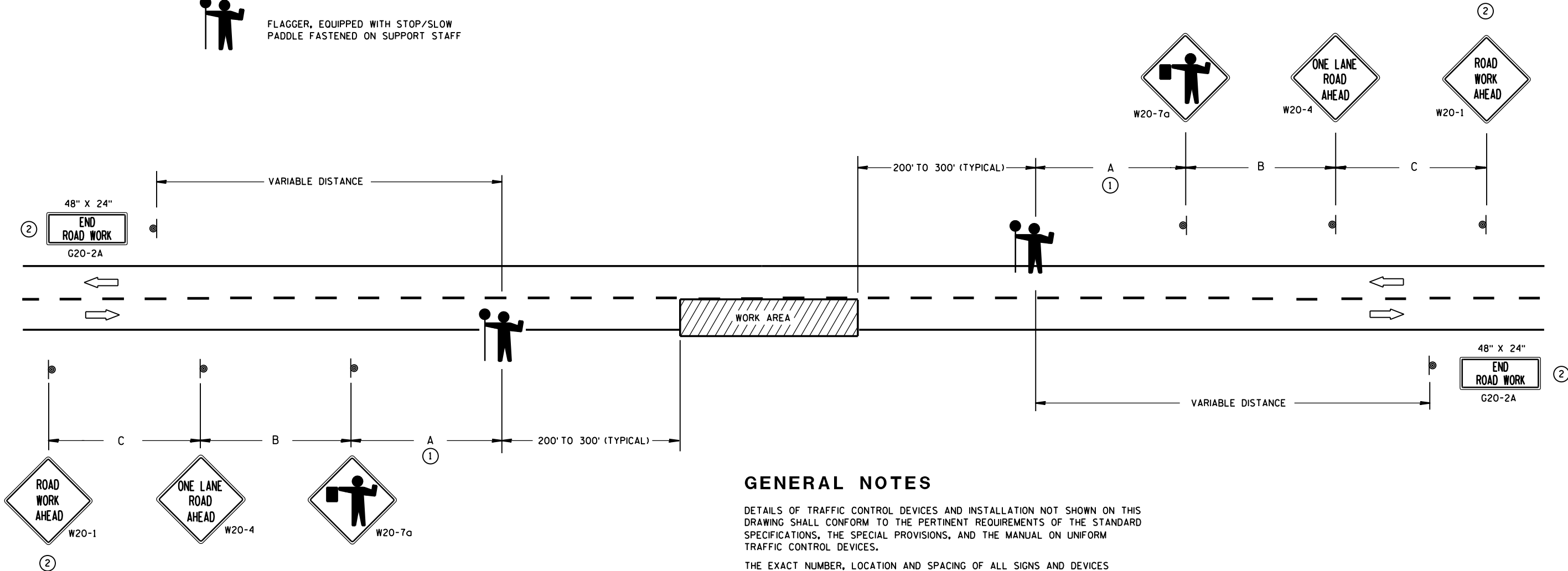
-  SIGN ON PORTABLE OR PERMANENT SUPPORT
-  DIRECTION OF TRAFFIC
-  WORK AREA
-  FLAGGER, EQUIPPED WITH STOP/SLOW PADDLE FASTENED ON SUPPORT STAFF

SIGN SPACING TABLE

SPEED LIMIT	SIGN SPACING A,B,C
25-35 MPH	200'
35-40 MPH	350'
45-55 MPH	500'



USE OF THE "BE PREPARED TO STOP" SIGN IS OPTIONAL. WHEN USED, THIS SIGN SHALL BE LOCATED BETWEEN THE W20-7a AND W20-4 SIGNS. A 500' TYPICAL SPACING SHALL BE PROVIDED BETWEEN THE SIGNS.



GENERAL NOTES

DETAILS OF TRAFFIC CONTROL DEVICES AND INSTALLATION NOT SHOWN ON THIS DRAWING SHALL CONFORM TO THE PERTINENT REQUIREMENTS OF THE STANDARD SPECIFICATIONS, THE SPECIAL PROVISIONS, AND THE MANUAL ON UNIFORM TRAFFIC CONTROL DEVICES.

THE EXACT NUMBER, LOCATION AND SPACING OF ALL SIGNS AND DEVICES (AND THE LOCATION OF ALL FLAGGERS) SHALL BE ADJUSTED TO FIT FIELD CONDITIONS AS APPROVED BY THE ENGINEER.

THE FIRST ADVANCE WARNING SIGN SHOULD TYPICALLY BE LOCATED IN ADVANCE OF THE ANTICIPATED TRAFFIC BACKUP OR QUEUE.

WHEN A SIDE ROAD OR RAMP INTERSECTS THE FACILITY ON WHICH THE WORK IS BEING PERFORMED, ADDITIONAL TRAFFIC CONTROLS SHALL BE PROVIDED AS SPECIFIED IN THE PLANS AND/OR THE SPECIAL PROVISIONS OR AS APPROVED BY THE ENGINEER.

FLAGGERS SHALL BE IN SIGHT OF EACH OTHER OR IN DIRECT COMMUNICATION AT ALL TIMES. THEY SHALL BE EQUIPPED WITH STOP/SLOW PADDLES FASTENED ON SUPPORT STAFFS. WHEN THE FLAGGING OPERATION IS NOT IN EFFECT, COVER OR REMOVE ALL TEMPORARY TRAFFIC CONTROL SIGNS.

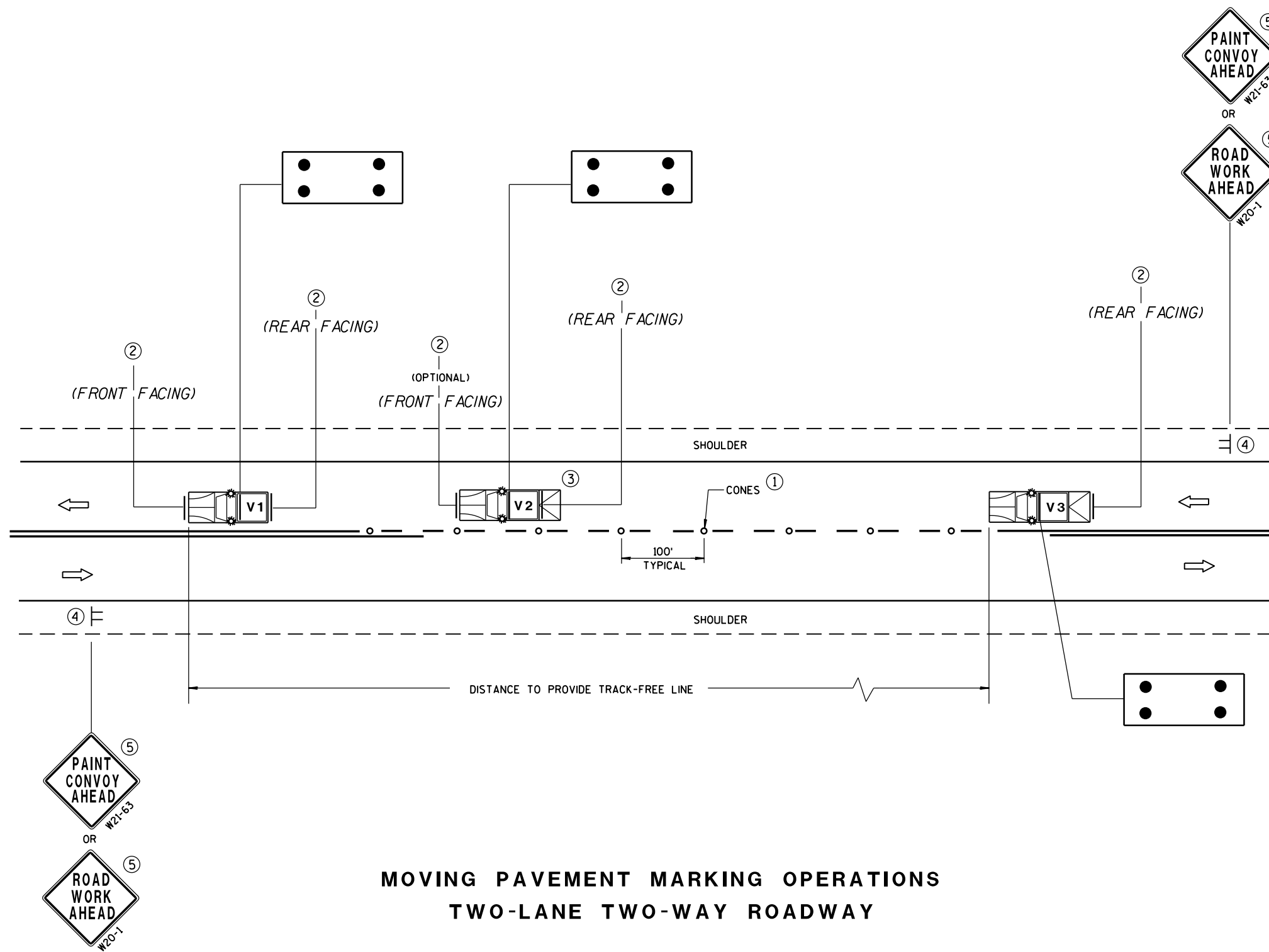
ALL SIGNS ARE 48" X 48" UNLESS OTHERWISE NOTED.

- ① FOR A MOVING WORK OPERATION, SIGNING FOR BOTH DIRECTIONS SHALL BE REESTABLISHED (AS SIMULTANEOUSLY AS PRACTICAL) AT APPROXIMATELY 3500 FOOT INTERVALS IN THE MOVING WORK OPERATION OR AS APPROVED BY THE ENGINEER.
- ② SIGN NOT REQUIRED IF FLAGGING OPERATION OCCURS WITHIN A SIGNED ROAD WORK ZONE AREA.

TRAFFIC CONTROL FOR LANE CLOSURE (SUITABLE FOR MOVING OPERATIONS)

STATE OF WISCONSIN
DEPARTMENT OF TRANSPORTATION

APPROVED
8/2013 /S/ Travis Feltes
DATE STATE TRAFFIC ENGINEER OF DESIGN
FHWA



MOVING PAVEMENT MARKING OPERATIONS TWO-LANE TWO-WAY ROADWAY

GENERAL NOTES

ALL VEHICLES SHALL BE EQUIPPED WITH TWO 360 DEGREE HIGH INTENSITY YELLOW FLASHING LIGHTS OR STROBE LIGHTS AND OPERATED WITH HEADLIGHTS TURNED ON.

VEHICLES SHALL BE EQUIPPED WITH REAR FACING TYPE B OR C FLASHING ARROW PANEL OPERATING IN CAUTION MODE. SIGNS PLACED ON VEHICLES MUST NOT OBSCURE THE ARROW PANEL.

ALL SIGNS ARE 48" X 48" UNLESS OTHERWISE SPECIFIED.

IF SPEED LIMIT IS 40 MPH OR LESS STATIONARY SIGNS MAY BE OMITTED IF CONES ARE USED.

ALTERNATE SIGN MESSAGES, SUCH AS "PAINT CREW AHEAD" OR "ROAD PAINTING AHEAD" MAY BE USED.

DISTANCE BETWEEN VEHICLES MAY VARY ACCORDING TO TERRAIN, SIGHT DISTANCE, PAINT DRYING TIME, AND OTHER FACTORS. WHENEVER ADEQUATE STOPPING SIGHT DISTANCE EXISTS TO THE REAR, SHADOW VEHICLES SHOULD MAINTAIN THE MINIMUM DISTANCE FROM THE WORK VEHICLE AND PROCEED AT THE SAME SPEED AS THE WORK VEHICLE. SHADOW VEHICLES SHOULD SLOW DOWN IN ADVANCE OF VERTICAL OR HORIZONTAL CURVES THAT RESTRICT SIGHT DISTANCE.

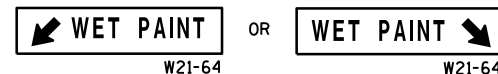
THE WORK AND SHADOW VEHICLES SHOULD PULL OVER PERIODICALLY TO ALLOW TRAFFIC TO PASS.

THIS DRAWING SHALL BE USED FOR CENTERLINE OR EDGELINE MARKING.

WHEN NO WORK ACTIVITY IS TAKING PLACE, REMOVE OR TURN THE STATIONARY WARNING SIGNS AWAY FROM TRAFFIC.

① CONES MAY BE OMITTED ON PAINTED LINE IF APPROVED BY THE ENGINEER. CONSIDER PAVEMENT MARKING DRY OR CURE TIMES AND TRAFFIC VOLUME.

② USE STANDARD SIGN W21-64 WITH APPROPRIATE ARROW.



③ OPTIONAL TRUCK-MOUNTED ATTENUATOR.

④ SIGNS SHALL BE REPEATED APPROXIMATELY EVERY THREE MILES.

⑤ IF CONSTRUCTION WORK ZONE SIGNS ARE IN PLACE, W20-1 OR W21-63 ARE NOT REQUIRED.

LEGEND

V1 LEAD VEHICLE

V2 SHADOW VEHICLE

V3 TRAIL VEHICLE WITH TMA

TMA TRUCK-MOUNTED ATTENUATOR

Sign on Temporary Support

Direction of Traffic

Cones

Flashing Arrow Panel (Caution)

MOVING PAVEMENT MARKING
OPERATION
TWO-LANE TWO-WAY ROADWAY

STATE OF WISCONSIN
DEPARTMENT OF TRANSPORTATION

APPROVED

5/3/2013
DATE

FHWA

/S/ Travis Feltes
STATE TRAFFIC ENGINEER

Notes



Wisconsin Department of Transportation

Dedicated people creating transportation solutions
through innovation and exceptional service.

<http://www.dot.wisconsin.gov>