

Erosion Control, Section 628

1. The Erosion Control Implementation Plan (ECIP) – New DT1073 form for 2020
2. Types of Devices
3. Maintenance

1

Erosion Control Implementation Plan (ECIP)

1. Any grading projects constructed by WisDOT require an ECIP
2. Prepared by the Contractor, reviewed by DOT in consultation with the DNR.
3. Review with Environmental Staff
4. The project is not allowed to begin without an approved ECIP

2

Types of Erosion Control

1. Temporary Measures
2. Permanent Devices

3

Maintenance

1. Weekly Review
2. After a Rain Event
3. Removal After No Longer Required

4

Erosion Control

1. Anything in the Plan or Special Provisions?
2. Field Review With Contractor
3. Rely on Regional Experts
4. Proper Installation
5. Maintenance and Repair

5

Silt Fence

- Silt Fence is Intended to be Utilized As a Perimeter Control to Intercept Sediment-laden Runoff
- Not Intended as Ditch Checks

6

Silt Fence



Silt Fence Maintenance



Riprap

- Reduces Velocity of Water
- Use as Ditch Check
- Use for Steeper Grades
- Longer Runs With High Water Volume







Erosion Mat/Riprap

Silt Screen



Turbidity Barrier, Silt Screen, Fabric, Riprap



Erosion Mat

- Several types
- Staked or Pinned to Soil
- May Include Seed and Fertilizer
- Careful if Area is to be Mowed
- Final Treatment

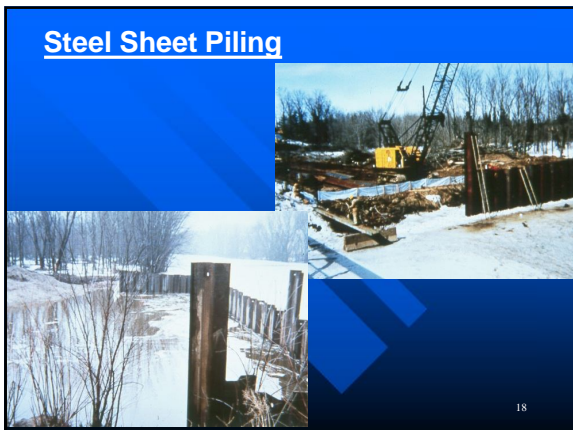


Steel Sheet Piling

- In Place Prior to Excavation
- Temporary
- Heavy Riprap Will Replace
- Costly Compared to Silt Screen
- Depending on how its installed may still need to provide silt screens or turbidity barrier.

17

Steel Sheet Piling



18

Erosion Control – Review

- Other erosion/sediment control devices not covered here can be found in FDM 10-10

19

Erosion Control – Review

- The Erosion Control Implementation Plan is a Guide That Can be Amended as the Project Progresses?
- Silt Fence Can be Used to Build a Sediment Trap in a Ditch?
- A Daily Review of Erosion Control is Required?
- Permanent Erosion Control Devices Are Allowed in the Clear Zone?

20
