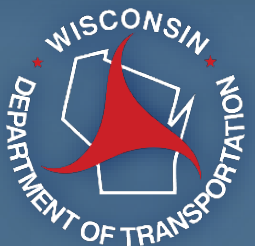


State Highway Program

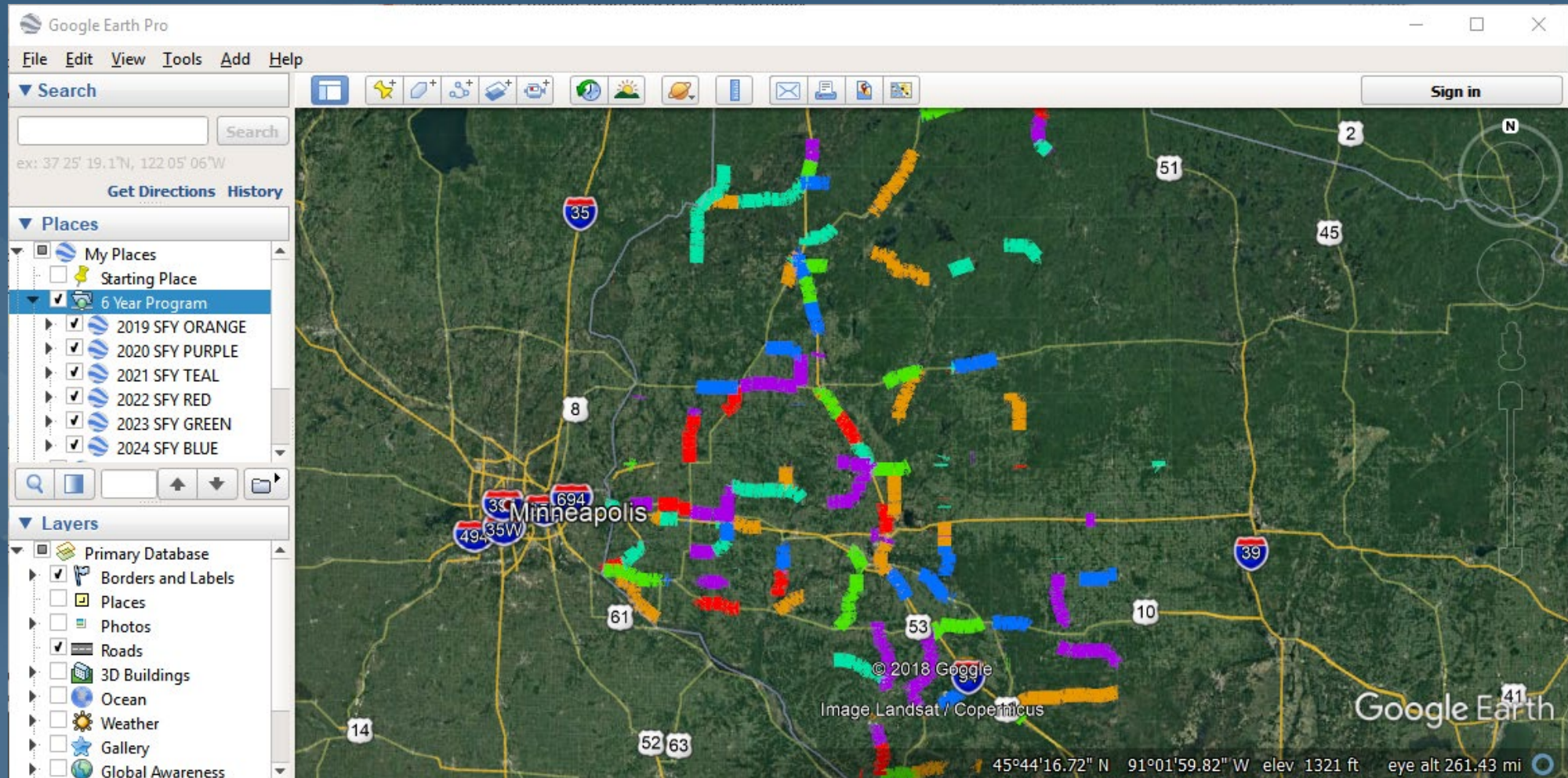
Heath Bielefeldt
Utility Coordinator

2019 WisDOT Northwest Region Utility Conference
WITC, Rice Lake, WI

March 5, 2019



Google Earth, “6 Year Program.kmz”



Google Earth, “6 Year Program.kmz”

Places

- My Places
- Starting Place
- 6 Year Program
 - 2019 SFY ORANGE
 - 2020 SFY PURPLE
 - 2021 SFY TEAL
 - 2022 SFY RED
 - 2023 SFY GREEN
 - 2024 SFY BLUE
- County Web Mapping Sites
- PLSS.kmz
- Wisconsin Municipal Web Mapping Sites
- Temporary Places

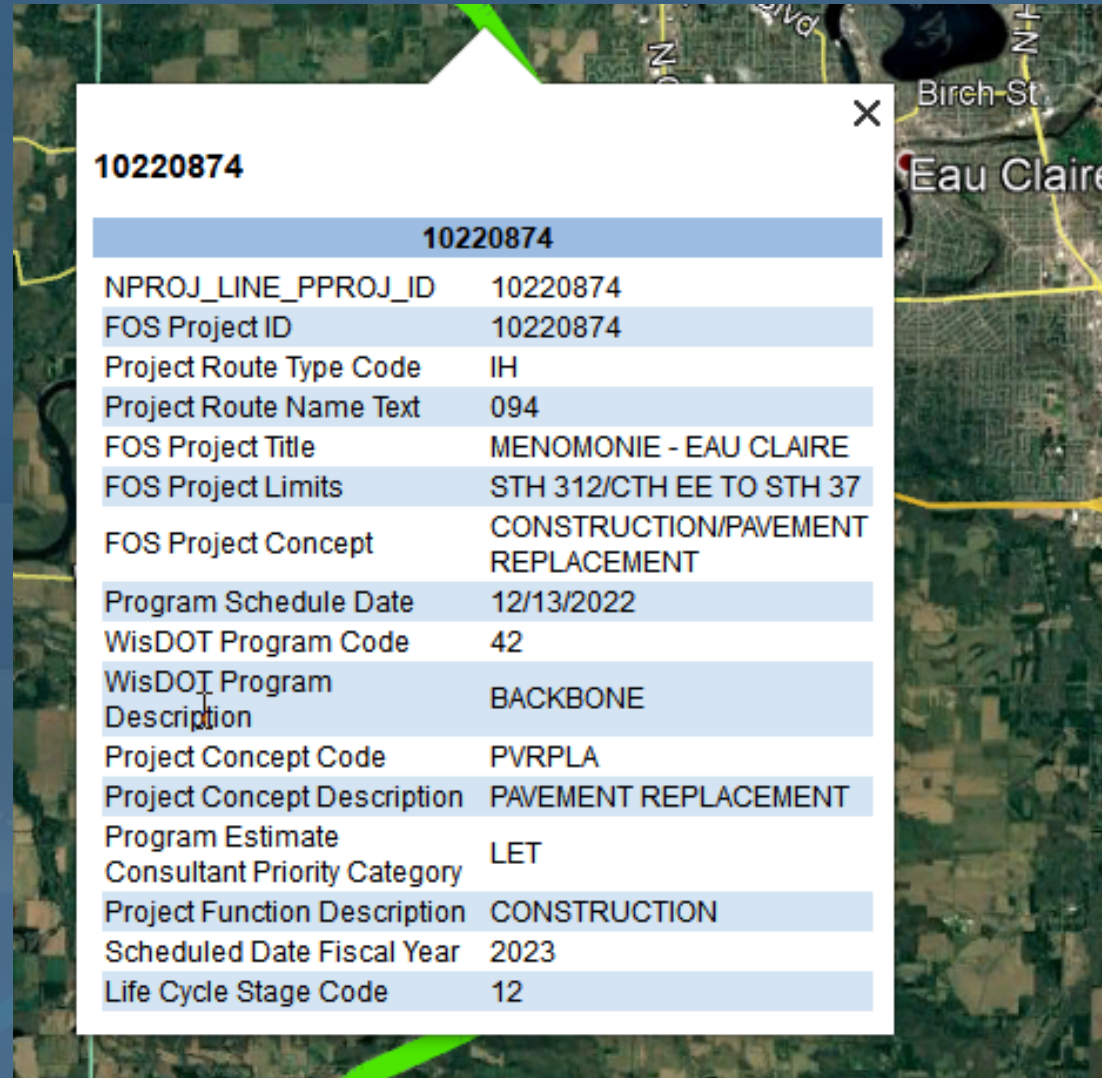
Layers

- Primary Database
- Borders and Labels
- Places
- Photos
- Roads
- 3D Buildings

10220874

10220874	
NPROJ_LINE_PPROJ_ID	10220874
FOS Project ID	10220874
Project Route Type Code	IH
Project Route Name Text	094
FOS Project Title	MENOMONIE - EAU CLAIRE
FOS Project Limits	STH 312/CTH EE TO STH 37
FOS Project Concept	CONSTRUCTION/PAVEMENT REPLACEMENT
Program Schedule Date	12/13/2022
WisDOT Program Code	42
WisDOT Program Description	BACKBONE
Project Concept Code	PVRPLA
Project Concept Description	PAVEMENT REPLACEMENT
Program Estimate	LET
Consultant Priority Category	
Project Function Description	CONSTRUCTION
Scheduled Date Fiscal Year	2023
Life Cycle Stage Code	12

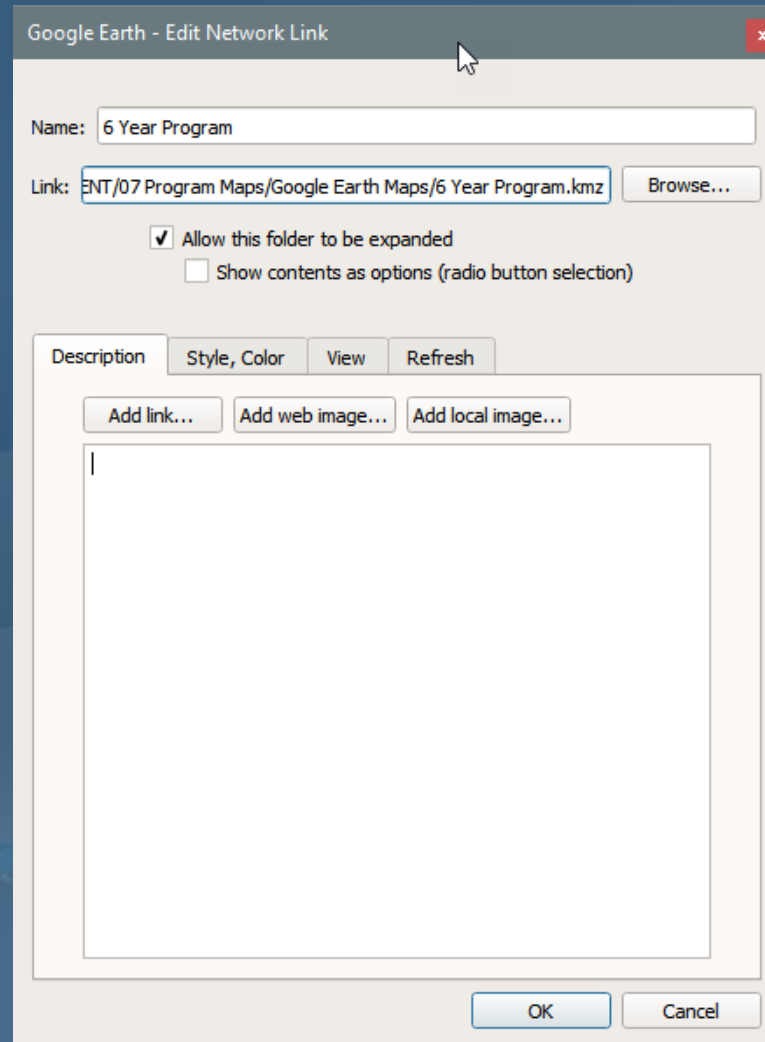
Google Earth, “6 Year Program.kmz”



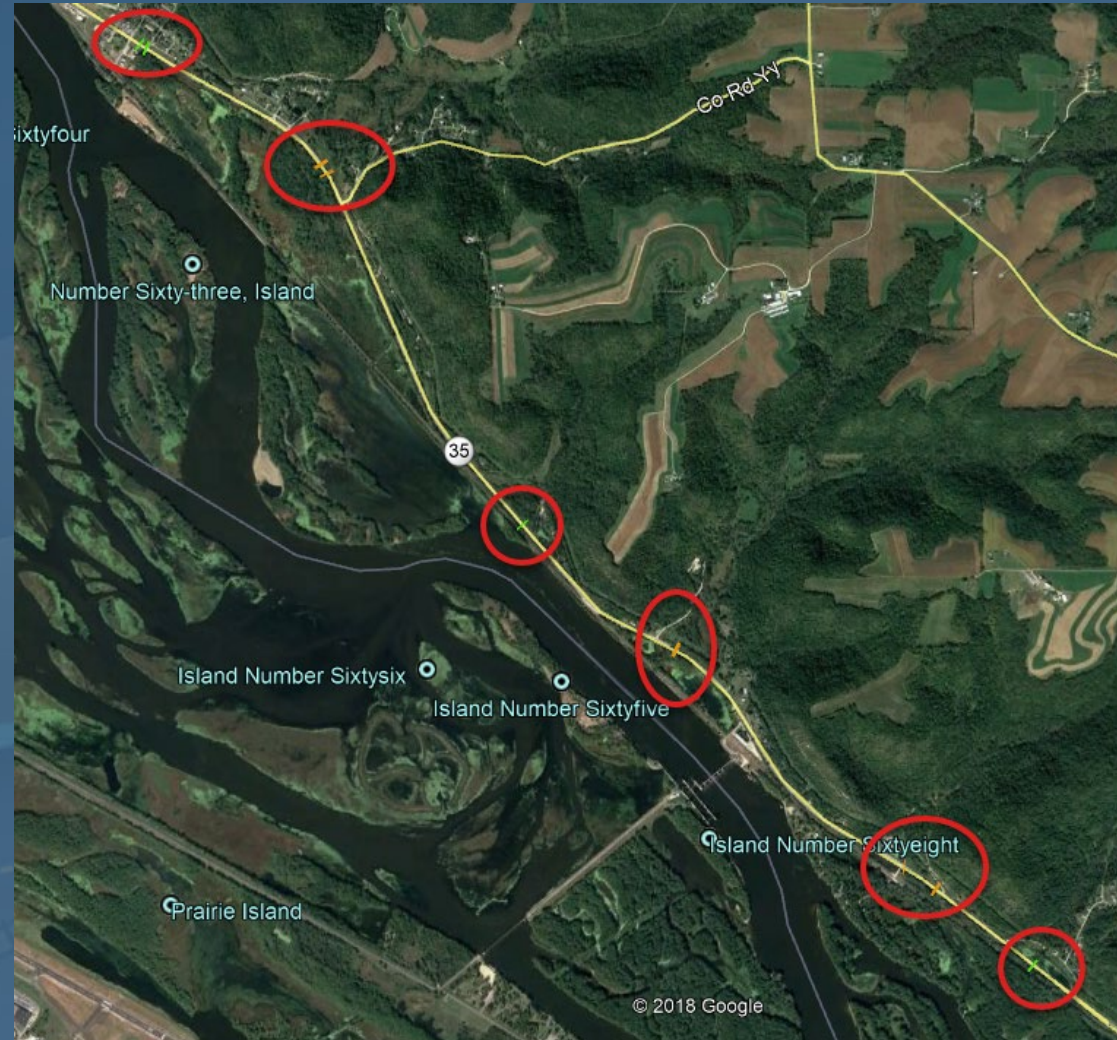
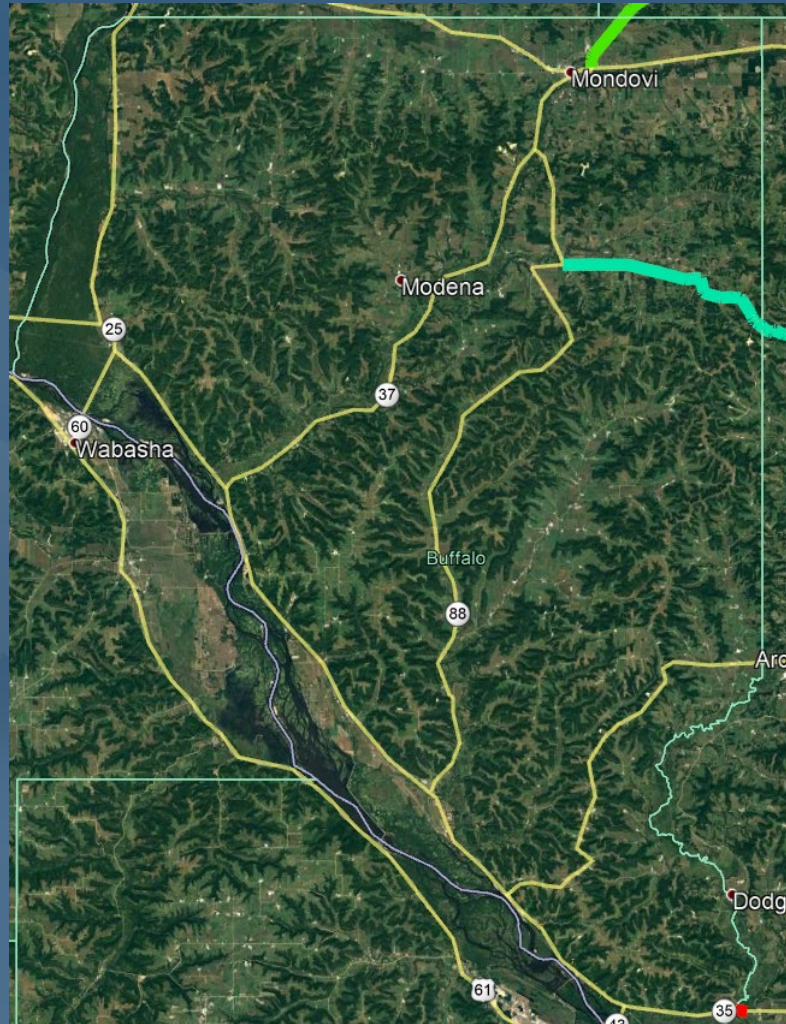
A Google Earth map showing a project location near Eau Claire, WI. A data popup window is displayed over the map, showing project details for ID 10220874. The popup window has a close button (X) in the top right corner. The map shows a road network with a yellow line indicating the project route. The popup window contains the following data:

10220874	
NPROJ_LINE_PPROJ_ID	10220874
FOS Project ID	10220874
Project Route Type Code	IH
Project Route Name Text	094
FOS Project Title	MENOMONIE - EAU CLAIRE
FOS Project Limits	STH 312/CTH EE TO STH 37
FOS Project Concept	CONSTRUCTION/PAVEMENT REPLACEMENT
Program Schedule Date	12/13/2022
WisDOT Program Code	42
WisDOT Program Description	BACKBONE
Project Concept Code	PVRPLA
Project Concept Description	PAVEMENT REPLACEMENT
Program Estimate	LET
Consultant Priority Category	LET
Project Function Description	CONSTRUCTION
Scheduled Date Fiscal Year	2023
Life Cycle Stage Code	12

Google Earth, “6 Year Program.kmz”



Problems Compared to Maps



View of Southern Buffalo County Map

