

LANE CLOSURE SYSTEM NOTES, FEBRUARY 2019

Lane Closure System (WisLCS): transportal.cee.wisc.edu/closures

LCS Advanced Notification

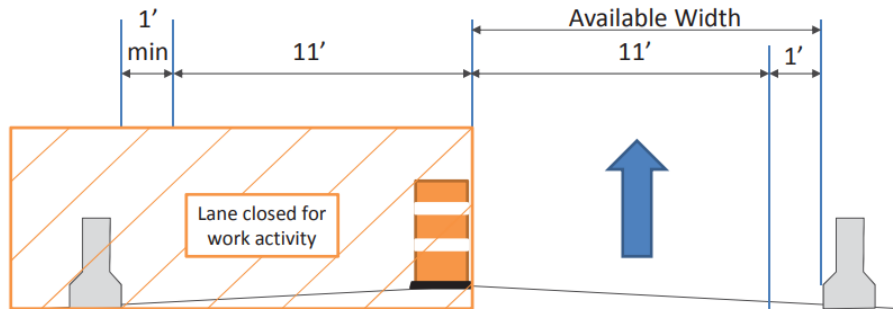
(as of 4/15/16)

Closure affecting OSOW < 16' available width < 15' effective width	MINIMUM Notification
Lane and shoulder closures	7 days
Full roadway closures	7 days
Ramp closures	7 days
Detours	7 days
Closures not affecting OSOW	
Lane and shoulder closures	3 business days
Modifications to any LCS entry	3 business days

- **Utility closures should be entered as Closure Type: Permit**
 - Utility coordinators cannot accept construction closures
- **Timeline for LCS Approvals**
 - Can take 2-3 days to get LCS entries approved
 - Cara Abts accepts all priority route closures (Regional Traffic Engineer)
 - Cara.Abts@dot.wi.gov, 715.421.8024
 - Coordinators accept non-priority route closures
 - **Inform your utility coordinator of closures right away!**
- **Closure Modifications**
 - If accepted, search for it in the MODIFY tab
 - If not accepted, search for it in the ACCEPT tab
 - Send approver an email to indicate the reason for the modification
- **Closure Completion**
 - Select "Complete All" on all finished closures. This must be done on closures lasting longer than 2 weeks.

Width Restrictions and Lane Closure System

1 Lane Open



LCS Entry → Available Width - 1' Buffer = 11' Effective Width

Width Signing → 11' Max Width

Available width < 16':

Width warning sign(s) required.

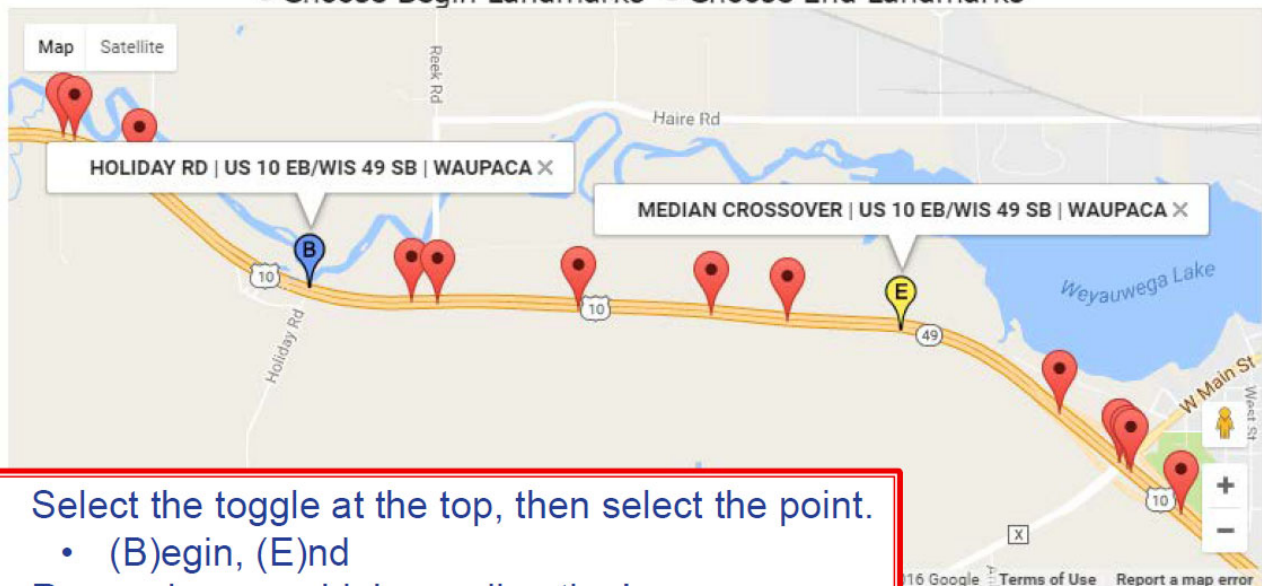
Recommend 2 Locations:

- One in WZTC advanced warning area
- One at location where a wide load could exit with supplemental **XX AHEAD** sign below

INCLUDE EFFECTIVE WIDTH CALCULATION IN COMMENTS

Select landmark from below

☐ Choose Begin Landmarks ☒ Choose End Landmarks



- Select the toggle at the top, then select the point.
 - (B)egin, (E)nd
- Remember your highway direction!
 - Select points in the direction of travel.
- Once set, hit Submit.

Submit

Cancel