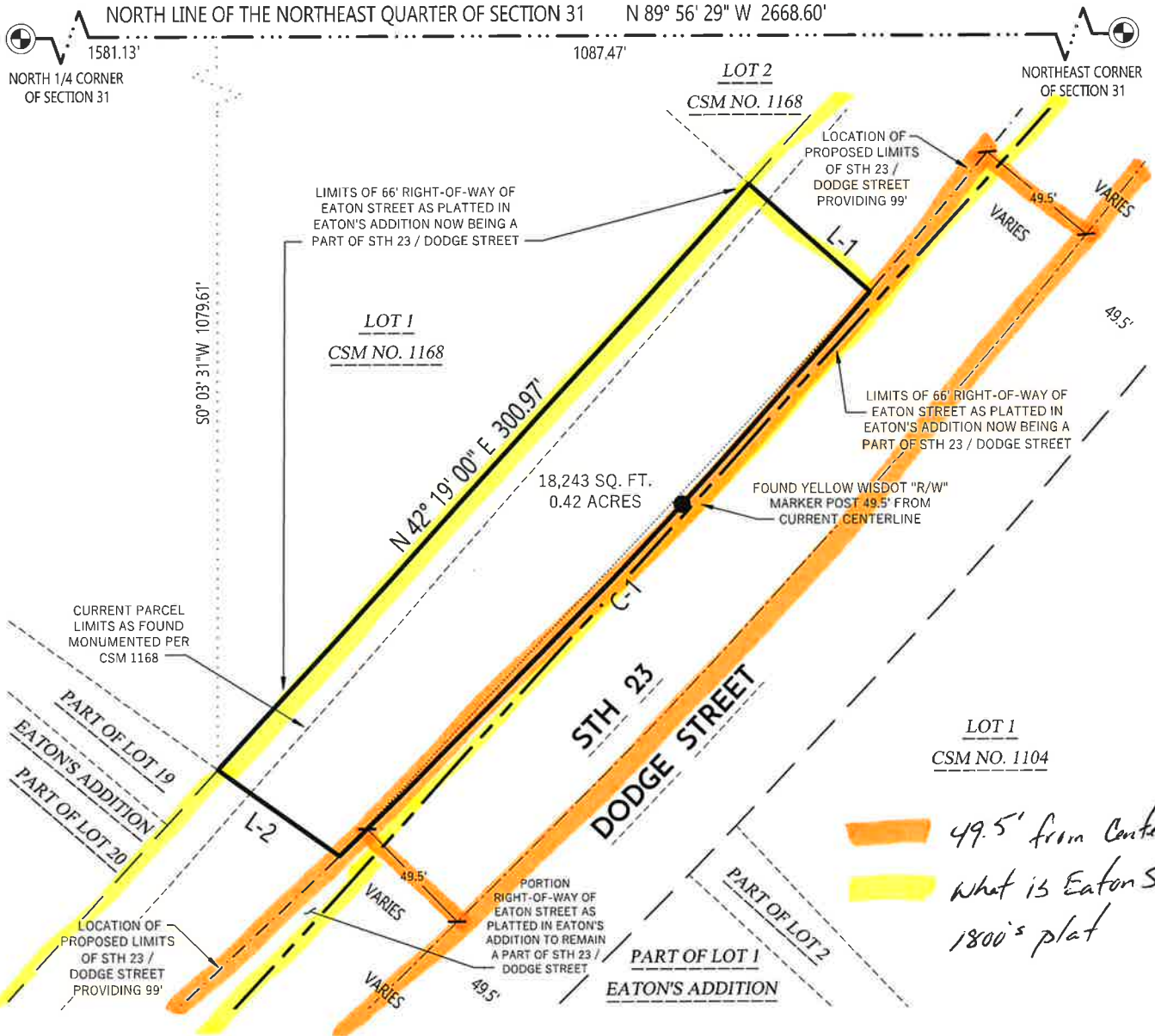


# RIGHT-OF-WAY EXHIBIT

PART OF EATON STREET, AS PLATTED IN EATON'S ADDITION RECORDED ON AUGUST 26TH, 1861 IN VOLUME 8 OF PLATS OF IOWA COUNTY ON PAGE 50 AS DOCUMENT NO. \_\_\_\_\_, BEING A PART OF THE NORTHEAST QUARTER OF THE NORTHEAST QUARTER OF SECTION 31, TOWN 5 NORTH, RANGE 3 EAST, LOCATED IN THE CITY OF MINERAL POINT, IOWA COUNTY, WISCONSIN.



CURVE TABLE

CURVE #	CURVE LENGTH	RADIUS	DELTA	CHORD BEARING	CHORD LENGTH	TANGENT IN	TANGENT OUT
C-1	295.24'	3224.80'	5° 14' 44"	S 43° 24' 33" W	295.14'	S 40° 47' 11" W	S 46° 01' 55" W

LINE TABLE

LINE #	BEARING	DISTANCE
L-1	S 48° 21' 28" E	61.83'
L-2	N 54° 24' 08" W	56.59'

## NOTES:

1. NORTH REFERENCE BASED ON THE NORTH LINE OF THE NORTHEAST QUARTER OF SECTION 31 T5N, R9E, WHICH BEARS N 89° 56' 29" W

## LEGEND

- — — — — RIGHT-OF-WAY LINE
- - - - - PARCEL LINE
- . . . - SECTION/QUARTER LINE
- — — — — AREA OF TERMINATED R-O-W
- - - - - NEW R-O-W LIMITS OF STH 23
- - - - - EATON STREET R-O-W AS PLATTED

