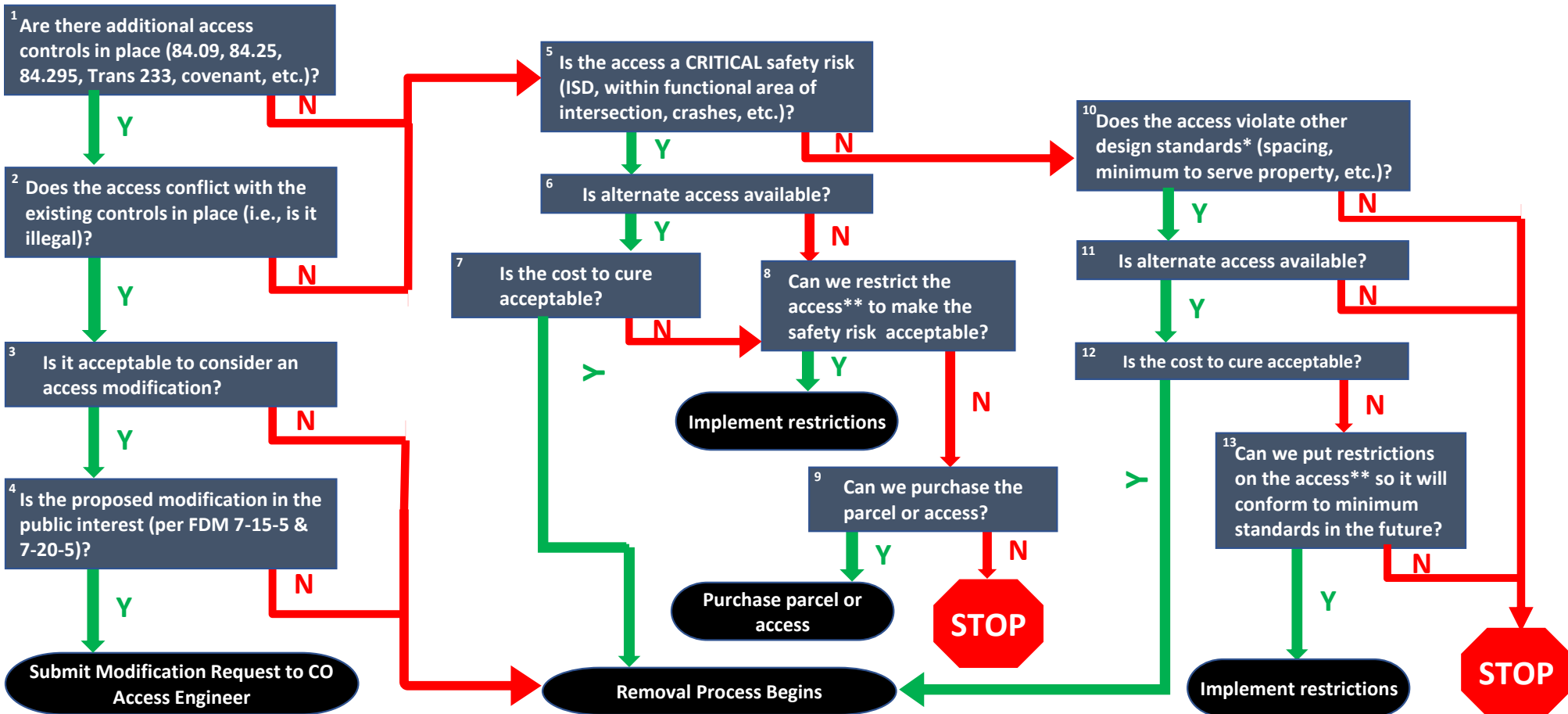


Improvement Project Existing Access Review Process

(for more detail, see HMM Chapter 09-10-20)



*Use design standards for the SAMP Tier, AADT, & Functional Class of highway. (See Trans 231, FDM 7-5 & 11-5).

**via covenant, MOA, permit, and/or physical change to the access. May involve working with local municipality and/or changes to the highway (median closure, J-turns, etc.).