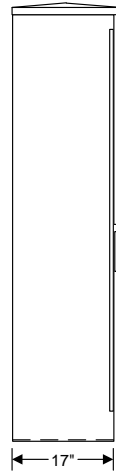
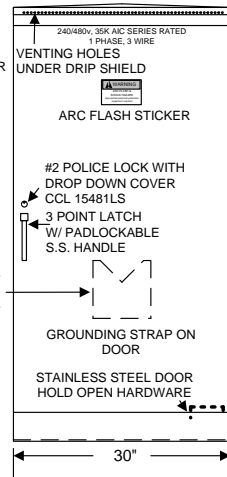


# **WISDOT 240/480 30"W LIGHTING CABINET**

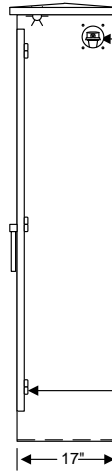
**LEFT SIDE VIEW**



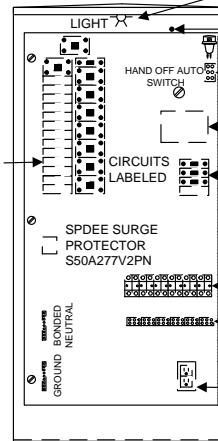
**FRONT VIEW**



**RIGHT SIDE VIEW**



**INTERIOR COMPONENTS**



LED CEILING MOUNT  
LIGHT PENTAIR  
LEDA1S35

BUTTON TYPE LIGHT  
SWITCH TO TURN LIGHT  
ON WHEN DOOR IS OPEN

PHOTOCELL TERMINAL BLOCK

1.5KVA TRANSFORMER  
GE 9T58K2933 OR EQUAL  
240/480 PRIMARY  
120/240 SECONDARY

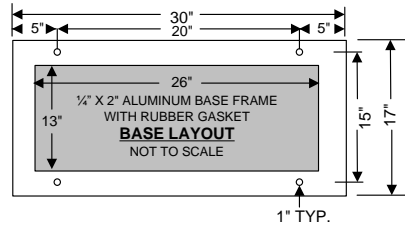
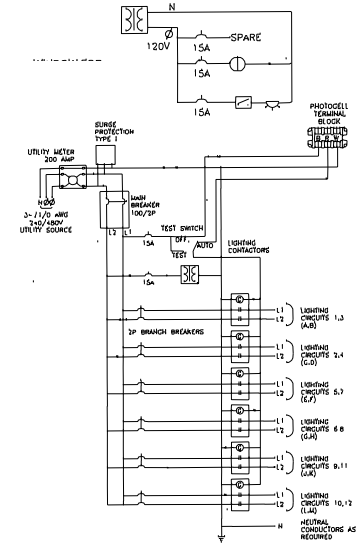
15A/1P 120V  
BREAKERS  
(1) GFCI  
(1) LIGHT  
(1) SPARE

6-30A/2P  
CONTACTORS

LIGHTING TERMINAL  
BLOCKS  
TO HANDLE 10 THRU  
#2 WIRE

15A GFCI  
CONVENIENCE  
RECEPTACLE

**WIRING DIAGRAM**



## **BOX CONSTRUCTION:**

- NEMA3R
- 1/8" ALUMINUM 5052-H32
- NEOPRENE GASKET ON DOORS
- STAINLESS STEEL HARDWARE (UNLESS OTHERWISE NOTED)
- ANODIZED 30MIN CLEAR
- ETL LISTED IN ACCORDANCE W/ UL508A

<b>Povolny Specialties</b>		<b>DBE, SBE, WBE, WBENC &amp; Wisconsin DBE CERTIFIED</b>		<b>PHONE: 651-452-7335 FAX: 651-452-7336 www.povolnyspecialties.com</b>	
		<b>7350 COURTHOUSE BLVD. INVER GROVE HGTS., MN 55077</b>			
<b>SCALE: N.T.S.</b>		<b>APPROVED BY:</b>		<b>DRAWN BY: DDM</b>	
<b>DATE:</b>		<b>QUANTITY:</b>		<b>REVISED:</b>	
<b>CUSTOMER:</b>					
<b>PROJECT:</b>				<b>DRAWING NUMBER POVWDL30-240/480</b>	
<b>THIS DRAWING IS THE PROPERTY OF POVOLNY SPECIALTIES, INC. PERMISSION TO USE GRANTED ONLY TO THE CONTRACTOR AND PROJECT NOTED ABOVE.</b>					