

Catalog Number:
CP3B0111GQ22WI30

120/240 VAC, 1-phase, 3-wire; 100 Amps Maximum, (see Main circuit breaker rating)
Rainproof - Type 3R, Aluminum Enclosure (60"H x 30"W x 17"D), clear Anodized
Enclosed Industrial Control - Suitable for Use as Service Equipment
The short circuit current rating is 22,000 RMS symmetrical amperes maximum at 240volts maximum, in accordance with the table below, but is limited to the lowest short circuit rating of any installed circuit breaker. Watthour meter is not included in the short circuit rating. Replacement circuit breakers must be of the same type and rating.

METERED CIRCUIT DIRECTORY

No.	Amp.	Poles	Circuit Description	No.	Amp.	Poles	Circuit Description
1	100	2	MAIN	2	15	1	CONTROL
3				4	20	2	LIGHTING
5	20	2	LIGHTING	6			
7				8	20	2	LIGHTING
9	20	2	LIGHTING	10			
11				12	15	1	LIGHT
13	20	2	LIGHTING	14	15	1	GFI
15				16	15	1	SPARE
17	20	2	LIGHTING	18			
19				20			
21	30	2	SURGE	22			
23				24			
25				26			
27				28			
29				30			

- NOTES:
- WisDOT**
- 1.) Sloped Top.
 - 2.) Pedestal must have Corbin Lock (Slam Latch) on customer door.
 - 3.) All electrical components must be installed inside the pedestal exactly as the outline drawings show.
 - 4.) Must label load side of each terminal pole.
 - 5.) Isolated neutral must be mounted on lower channel.

AIC RATING	MAIN	BRANCHES
10	MILBANK TYPE MQP; SIEMENS TYPE QP; CUTLER HAMMER TYPE HQP, BR; GE TYPE THQL	MILBANK TYPE: MQP; SIEMENS TYPE: QP (1-POLE 70A MAX), QT, QPF; CUTLER-HAMMER TYPE: BR, QFCB, HQP, QPGF; GE TYPE TQL, THQL, THQL-GF
22	MILBANK TYPE MQPH; SIEMENS TYPE QPH; CUTLER HAMMER TYPE QPHW, BRH; GE TYPE THHQL	MILBANK TYPE: MQPH; SIEMENS TYPE: QPH (1-POLE 70A MAX), QPHF; CUTLER-HAMMER TYPE: BRH, QPHW, QPHGF; GE TYPE THHQL, THHQL-GF
22 SERIES RATED	SIEMENS QPH	SIEMENS TYPE: QP (1-POLE 70A MAX), QT, QPF
	CUTLER HAMMER TYPE QPHW	CUTLER HAMMER TYPE HQP, QPGF
	GE TYPE THHQL	GE TYPE THQL

Circuit breaker handle trip position is between "ON" and "OFF". To reset breaker, move handle to the full "OFF" position, then to full "ON".

Terminal Information, Use AL/CU conductors

FIELD WIRED CONNECTORS					BUS CONNECTIONS			For Equipment Ground ONLY, multiple conductors in a single opening are permissible as indicated below		
		SLOTTED HEAD SCREWS			THREADFORMING SCREWS					
Socket Size	Torque Lb.-In.	AWG Wire Size	Torque, Lb.-In. Small Hole	Large Hole	SCREW	MAT'L	Torque, Lb.-In.	AWG Wire Size	Small Hole	Large Hole
5/16"	275	#14-10	20	35	10-24	AL	30	#14-10	1-2	1-2
3/8"	375	#8	25	40	10-24	CU	50	#10	1	3
1/2"	500	#6	35	45	1/4-20	AL	50	#8 - 6	1	1
9/16"	600	#4	-	45	1/4-20	CU	72	#4 - 1/0	1	1
		#3-1/0	-	50						

Shipping may loosen electrical connections. CHECK TIGHTNESS BEFORE ENERGIZING.

BONDED NEUTRAL – Remove neutral load conductors for test purposes only! FIELD INSTALLED conductors shall be 60°C, 75°C, or 90°C, sized to 60°C rating for 110 amps or less; and 75°C or 90°C for 125 amps and above.

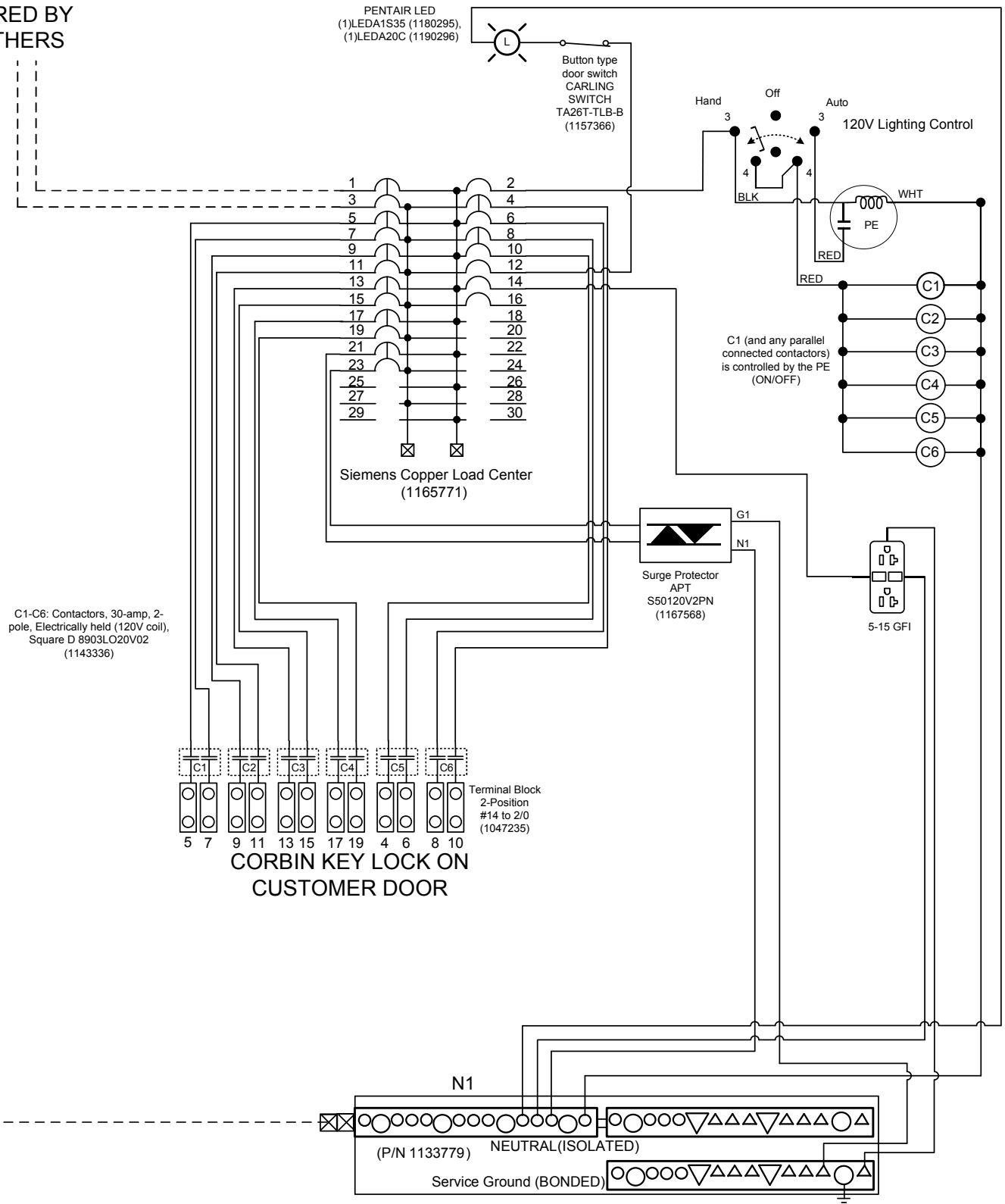


Catalog Number:
CP3B0111GQ22WI30

Dead Front - 1193419

120/240 VAC, 1-phase, 3-wire; 100 Amps Maximum, (see Main circuit breaker rating)
Rainproof - Type 3R, Aluminum Enclosure (60"H x 30"W x 17"D), clear Anodized
Enclosed Industrial Control - Suitable for Use as Service Equipment

WIRED BY
OTHERS



C1-C6: Contactors, 30-amp, 2-pole, Electrically held (120V coil), Square D 8903LO20V02 (1143336)

Terminal Block
2-Position
#14 to 2/0
(1047235)

CORBIN KEY LOCK ON
CUSTOMER DOOR

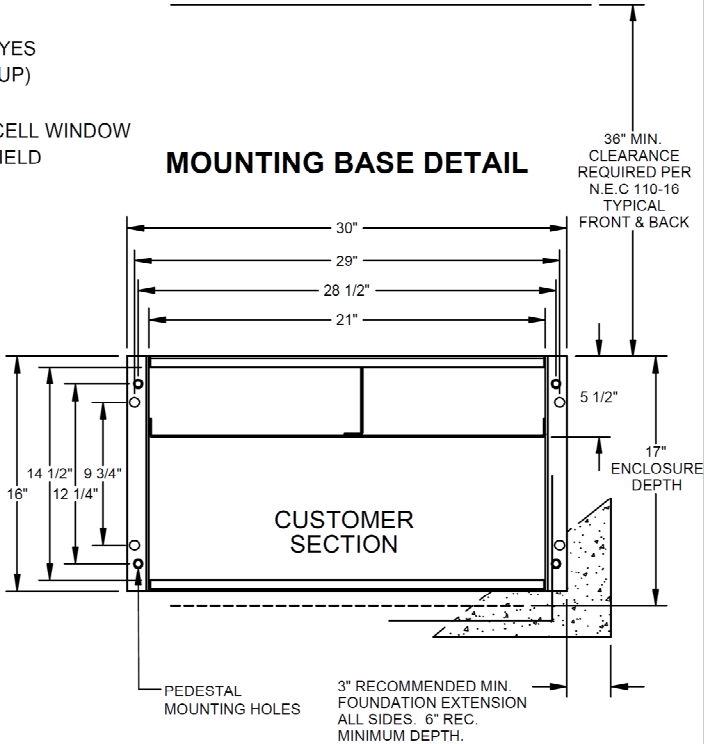
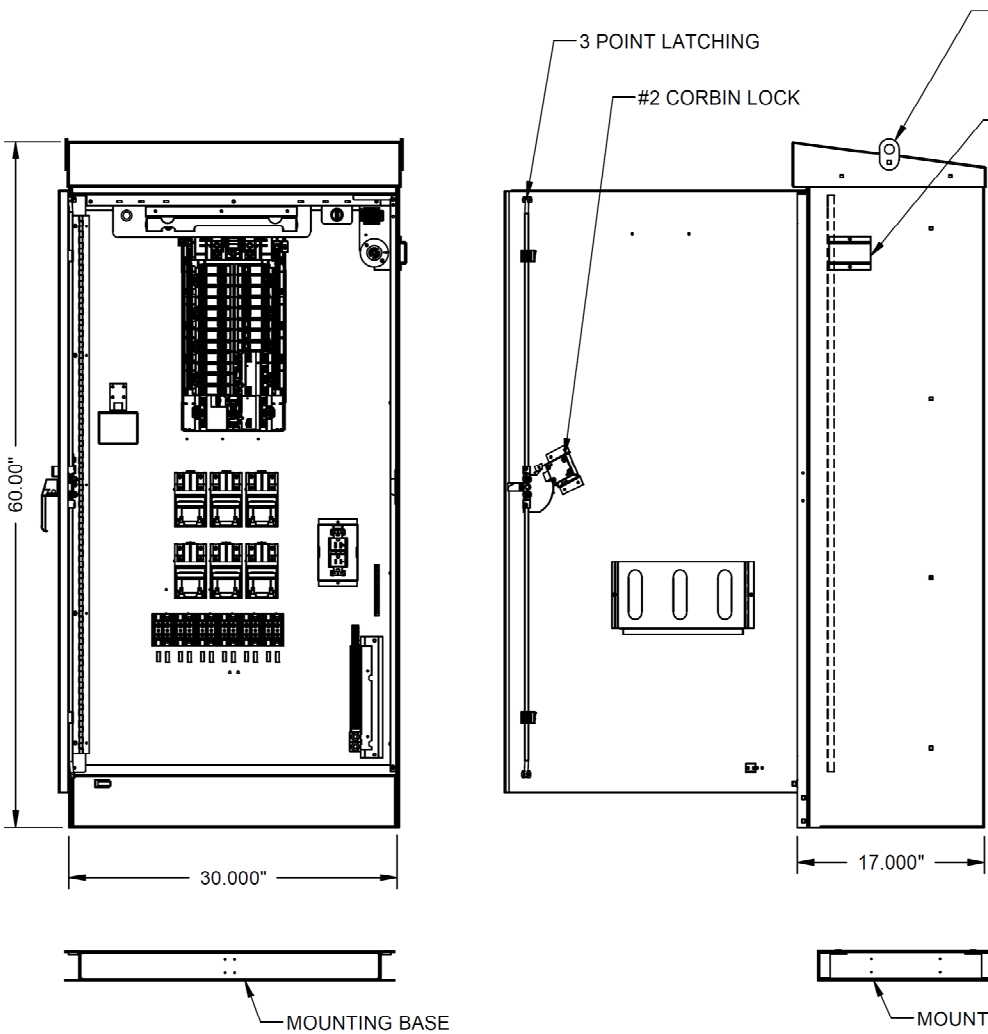
N1

(P/N 1133779) NEUTRAL (ISOLATED)

Service Ground (BONDED)



30" COMMERCIAL PEDESTAL
SOLID BACK



WisDOT-CP3B0111GQ22WI30

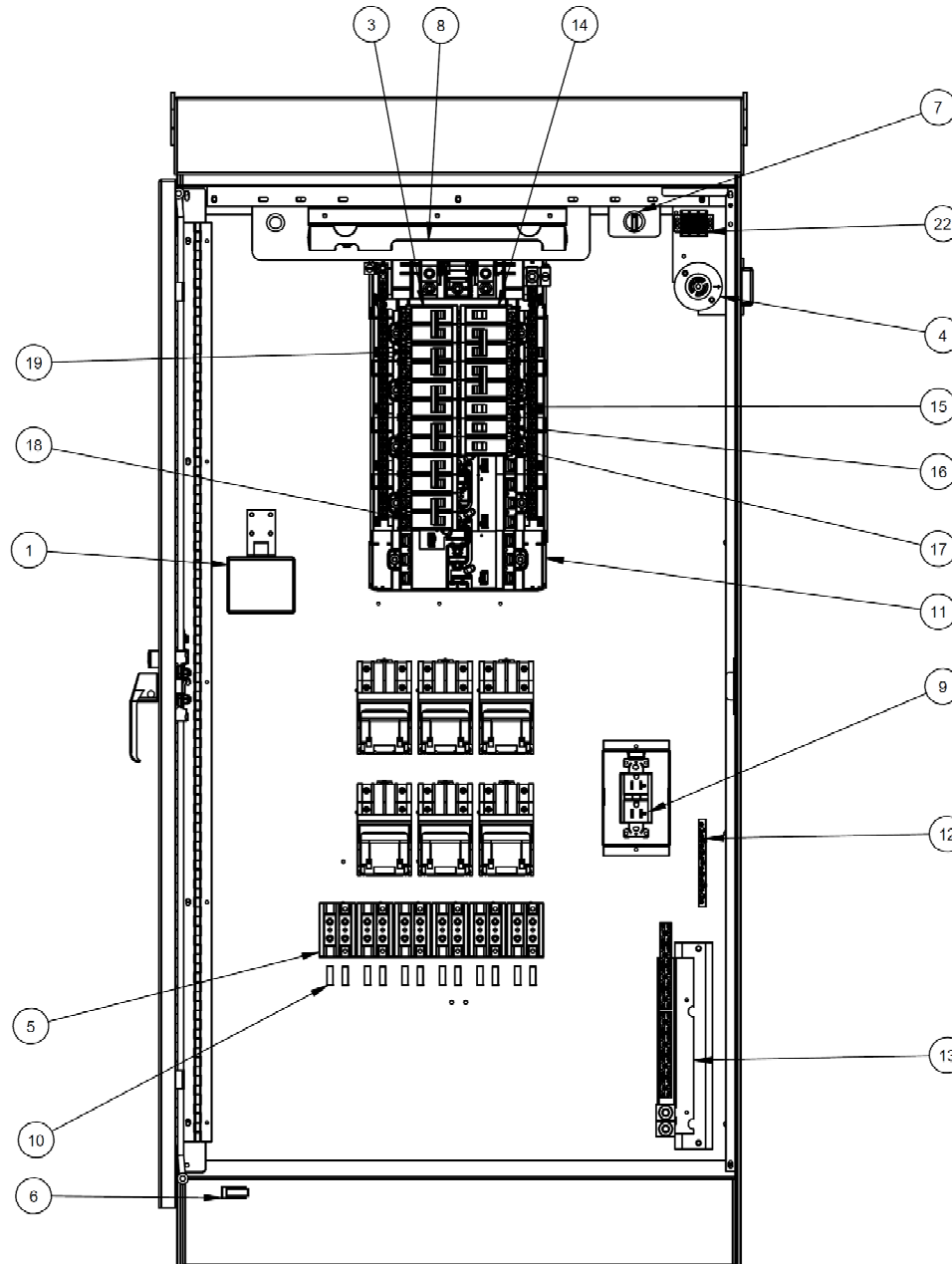


Version:

1

All dimensions are +/- 1/16".
Drawing views are not to scale.
Utility requirements for this equipment may vary. Always consult the serving utility for their requirements prior to ordering or installing this equipment. This product must be installed by a licensed electrician. Installation of this equipment may require local electrical inspector approval.

CP3B0111GQ22WI30



EQUIPMENT:

ITEM	DESCRIPTION
1	SURGE
2	CONTACTORS
3	2 POLE 100 AMP BACKFED MAIN C/B
4	PE RECEPTACLE
5	2 POSITION TERMINAL BLOCKS FOR LOAD CONDUCTORS
6	DOOR OPERATED SWITCH FOR LIGHT
7	HAND-OFF-AUTO SWITCH
8	LIGHT
9	5-20 GFI DUPLEX RECEPTACLE
10	LABELS, LABELING FOR EACH TERMINAL ON THE LOAD SIDE
11	30 CKT LOAD CENTER 120/240V
12	GROUND TERMINAL
13	ISOLATED NEUTRAL ASSEMBLY
14	1 POLE 15 AMP "CONTROL" BREAKER
15	1 POLE 15 AMP "INTERIOR LIGHT" BREAKER
16	1 POLE 15 AMP "RECEPTACLE" BREAKER
17	1 POLE 15 AMP SPARE BREAKER
18	2 POLE 30 AMP "SURGE" BREAKER
19	(6) 2 POLE 20 AMP "LIGHTING" BREAKER

WisDOT-CP3B0111GQ22WI30



Version:

1

All dimensions are +/- 1/16".
Drawing views are not to scale.

Utility requirements for this equipment may vary. Always consult the serving utility for their requirements prior to ordering or installing this equipment. This product must be installed by a licensed electrician. Installation of this equipment may require local electrical inspector approval.