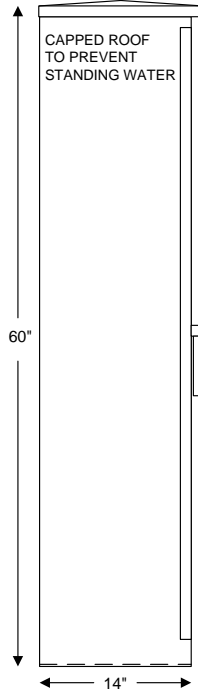
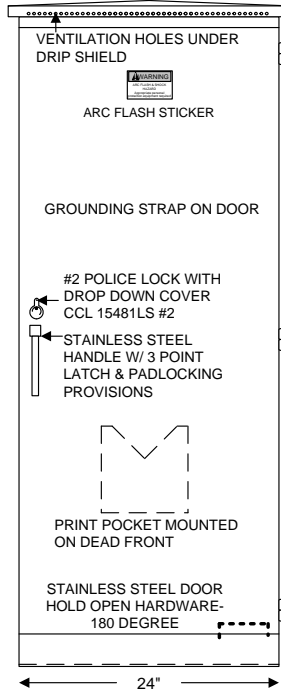


WISDOT 120/240 LIGHTING CABINET

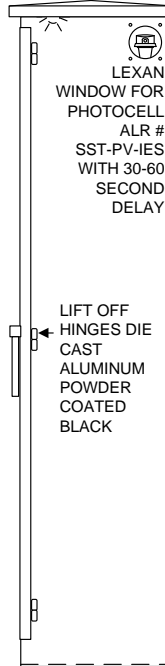
LEFT SIDE VIEW



FRONT VIEW



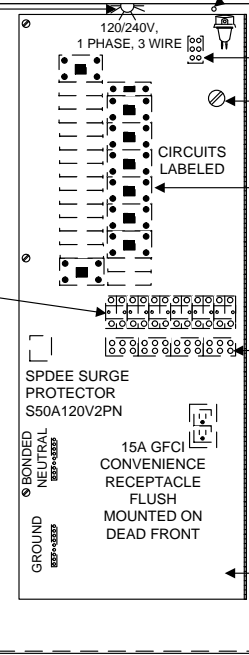
RIGHT SIDE VIEW



INTERIOR COMPONENTS

CEILING MOUNTED LED LIGHT PENTAIR MODEL LEDA1S35

(6) 30A/2P CONTACTORS CUTLER HAMMER XTCE032C10A

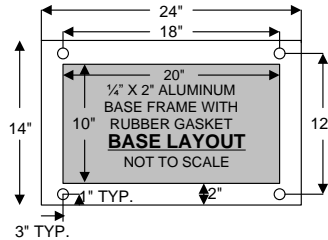
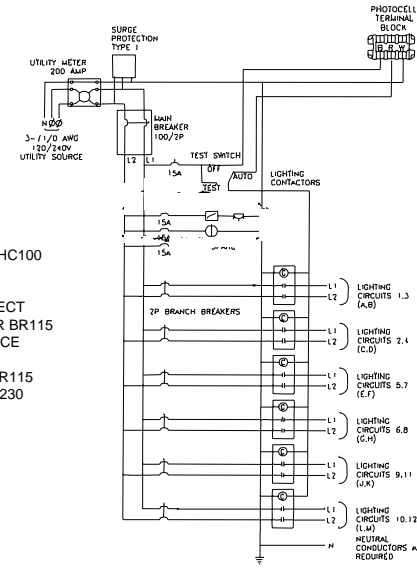


BUTTON TYPE LIGHT SWITCH TO TURN LIGHT ON WHEN DOOR IS OPEN

PHOTOCELL TERMINAL BLOCK
HAND OFF AUTO SWITCH MOUNTED ON HINGED DEAD FRONT
30 CKT LOAD CENTER CUTLER HAMMER # BR3030HC100
22K AIC SERIES RATED COPPER BUSS
100A/2P SERVICE DISCONNECT
(1) 15A/1P CONTROL POWER BR115
(1) 15A/1P GFCI CONVENIENCE RECEPTACLE BR115
(1) 15A/1P CABINET LIGHT BR115
(1) 30A/2P SURGE PROT. BR230
(6) 30A/2P LIGHTING BR230

LIGHTING TERMINAL BLOCKS TO HANDLE 10 THRU #2 WIRE

INTERIOR COMPONENTS MOUNTED ON BACK PANEL BEHIND HINGED DEAD FRONT WITH QUARTER TURN LATCHES



BOX CONSTRUCTION:

- NEMA3R
- 1/8" ALUMINUM 5052-H32
- ANODIZED 30MIN CLEAR
- NEOPRENE GASKETED DOORS
- STAINLESS STEEL HARDWARE (UNLESS OTHERWISE NOTED)
- ETL LISTED IN ACCORDANCE W/ UL508A

Povolny Specialties

DBE, SBE, WBE, WBENC & Wisconsin DBE CERTIFIED

7350 COURTHOUSE BLVD.
INVER GROVE HTGS., MN 55077

PHONE: 651-452-7335
FAX: 651-452-7336
www.povolnyspecialties.com

SCALE: N.T.S.	APPROVED BY:	DRAWN BY: DDM
DATE:	QUANTITY: 1	REVISED:
CUSTOMER:		
PROJECT:		DRAWING NUMBER POVWDL24-120/240
THIS DRAWING IS THE PROPERTY OF POVOLNY SPECIALTIES, INC. PERMISSION TO USE GRANTED ONLY TO THE CONTRACTOR AND PROJECT NOTED ABOVE.		