



The Leader in Electro-Optics Technology

a subsidiary company of LITEON

Job Name: **WISDOT LED-A**

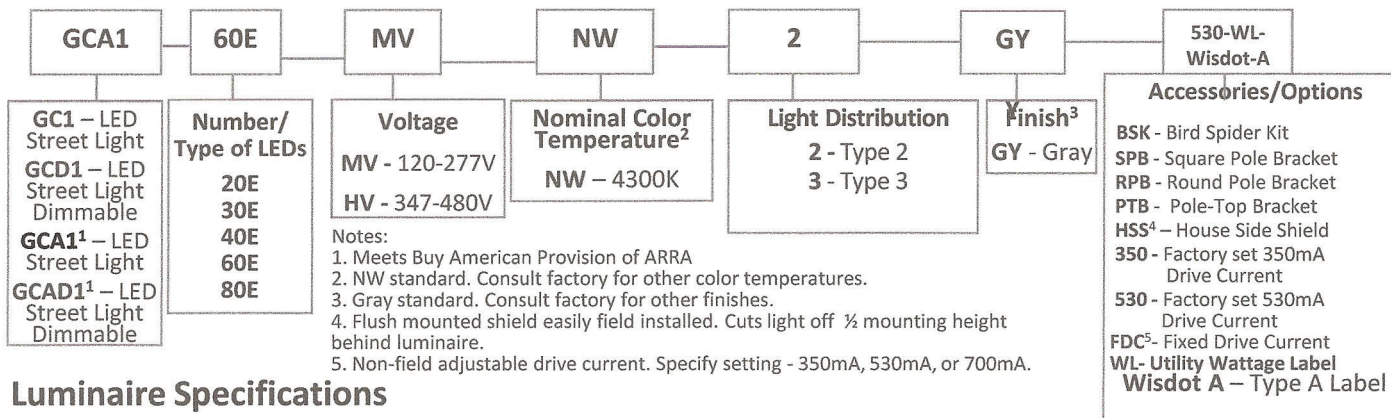
REV. 04/03/20213

Type: **LED-A**

Complete Catalog Number: **GCA1-60E-MV-NW-2-GY-530-WL-Wisdot-A**

LED GREEN Cobra™ Street Light

Ordering Example



Luminaire Specifications

Housing: Die cast aluminum housing with universal four-bolt slip fitter mounts to 1 1/4" to 2" (15/8" to 23/8" O.D.) diameter mast arm. Cooling fins maintain LED junction temperature assuring long LED life and efficiency. Electrical components are accessed without tools and are mounted on removable power door. Power door features quick electrical disconnects to terminal block and LED board. Photo control receptacle is standard and can be aimed without tools. Photo control is provided by others.

Light Emitting Diodes: Hi-flux/Hi-power white LEDs produce a minimum of 70% of initial intensity at 70,000 hours of life. LEDs are tested in accordance with IESNA LM-80 testing procedures. They have a mean correlated color temperature of 4300K (standard). LEDs are 100% mercury and lead free.

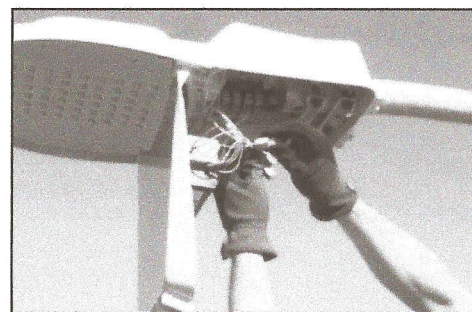
Optical Systems: Micro-lens systems produce IESNA Type 2 or Type 3 distributions. Luminaire is classified as Full-Cutoff with 0% total lumens above 90°.

Electrical: Power supply features a minimum power factor of .90 and <20% Total Harmonic Distortion (THD). EMC meets or exceeds FCC CFR Part 15. Transient voltage complies with ANSI C62.41 Cat. A. Power supply is field adjustable to 350mA, 530mA, or 700mA drive current. Standard factory setting is 700mA. Integral surge protector is tested per ANSI/IEEE C62.45 procedures based on ANSI/IEEE C62.41.2 definitions for standard and optional waveforms for Location Category C-High.

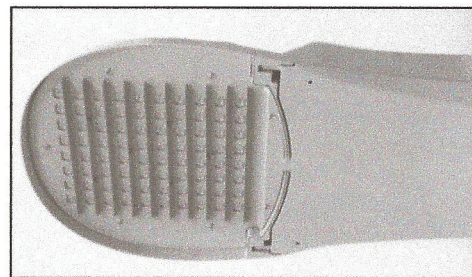
Finish: Housing receives a fade and abrasion resistant, epoxy polyester powder coat, light gray finish standard.

Listings/Ratings/Warranties/Patents: Luminaires are UL listed for use in wet locations in the United States and Canada. Optical systems maintain an IP66 rating. Five-year limited warranty is standard on all components. Patents pending.

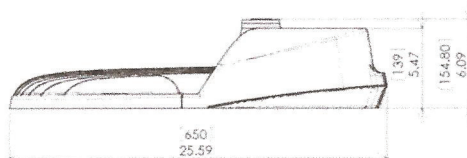
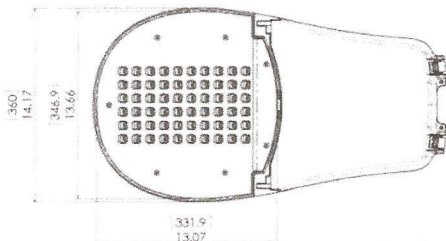
Photometry: All luminaires are photometrically tested by certified independent testing laboratories in accordance with IESNA LM-79 testing procedures.



Removable "power door" opens without tools and hangs securely during wiring.



Optional House Side Shield plate with back light strips is factory or field installable.



Weight	EPA*
21 lbs. (9kg)	0.9ft ²

*Effective Projected Area (consult factory for multiple units)

LED GREEN Technology

GCA units are manufactured in USA and meet Buy American requirements within the ARRA.

