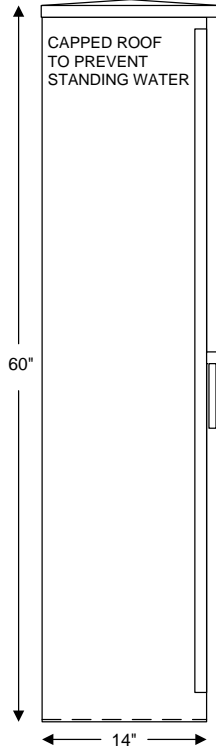
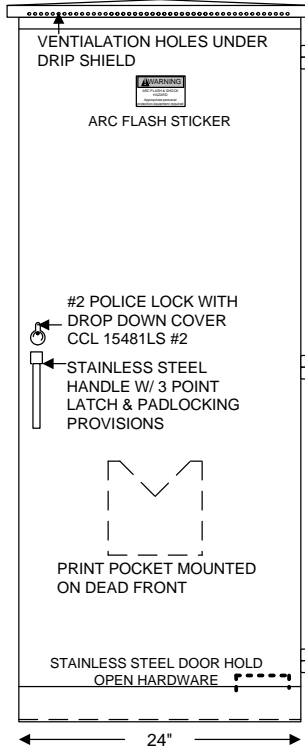


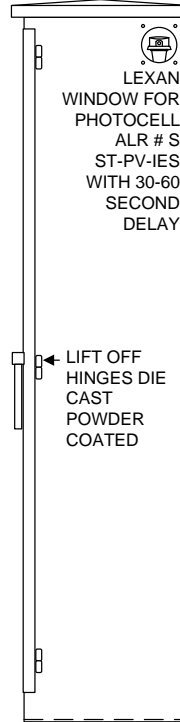
LEFT SIDE VIEW



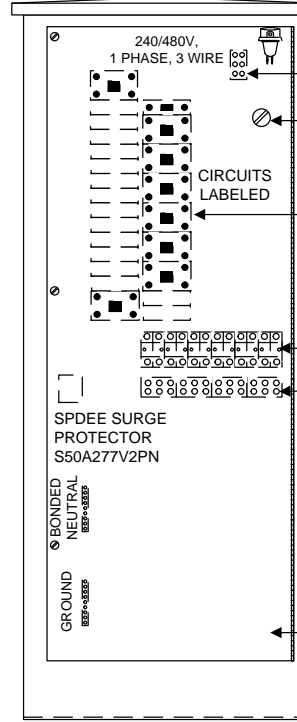
FRONT VIEW



RIGHT SIDE VIEW



INTERIOR COMPONENTS

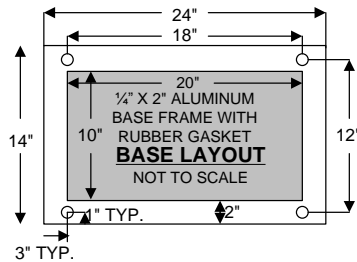
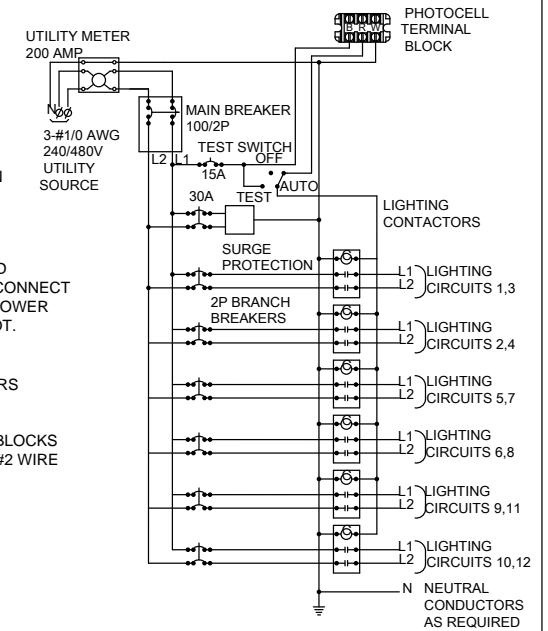


30 CKT PANELBOARD CUTLER HAMMER
35K AIC SERIES RATED
100A/2P SERVICE DISCONNECT
(1) 15A/1P CONTROL POWER
(1) 30A/2P SURGE PROT.
(6) 30A/2P LIGHTING

(6) 30A/2P CONTACTORS CUTLER HAMMER XTCE032C10A
LIGHTING TERMINAL BLOCKS TO HANDLE 10 THRU #2 WIRE

INTERIOR COMPONENTS MOUNTED ON BACK PANEL BEHIND HINGED DEAD FRONT WITH QUARTER TURN LATCHES

240/480 WIRING DIAGRAM



BOX CONSTRUCTION:

- NEMA3R
- 1/8" ALUMINUM 5052-H32
- ANODIZED 30MIN CLEAR
- NEOPRENE GASKETED DOORS
- STAINLESS STEEL HARDWARE (UNLESS OTHERWISE NOTED)
- ETL LISTED IN ACCORDANCE W/ UL508A

WISDOT 240/480 LIGHTING CABINET QTY. 1

**Povolny
Specialties**

7350 COURTHOUSE BLVD.

PHONE: 651-452-7335

FAX: 651-452-7336

INVER GROVE HGTS., MN 55077

SCALE: N.T.S.	APPROVED BY:	DRAWN BY: DDM
DATE:		REVISED:
		DRAWING NUMBER
		POVWISDOT240/480