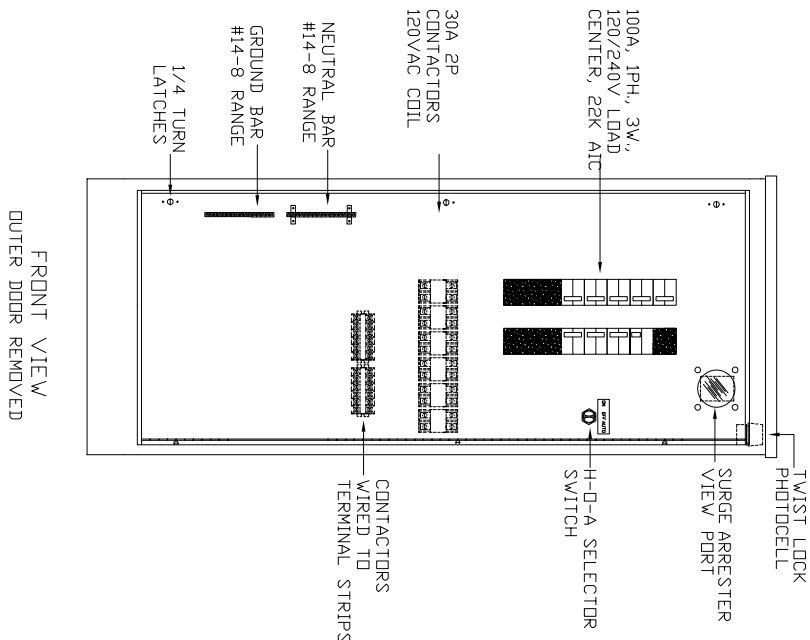
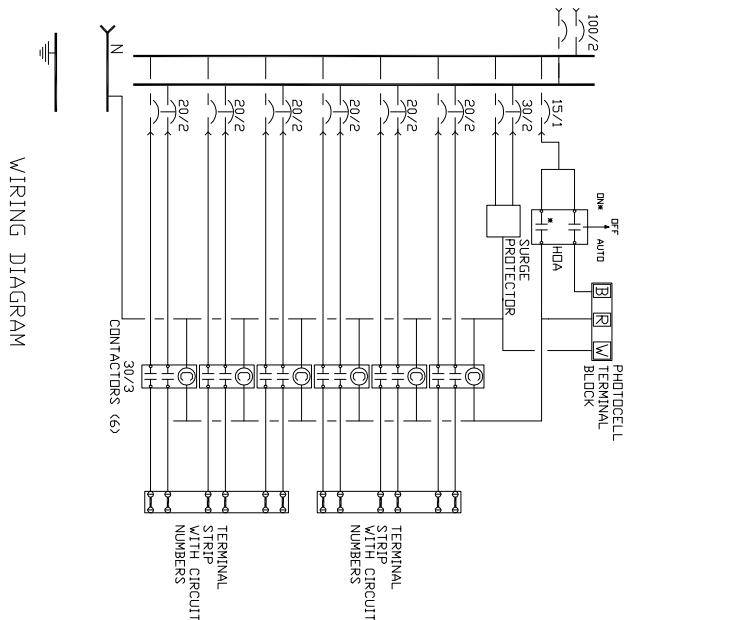


SIDE VIEW

FRONT VIEW

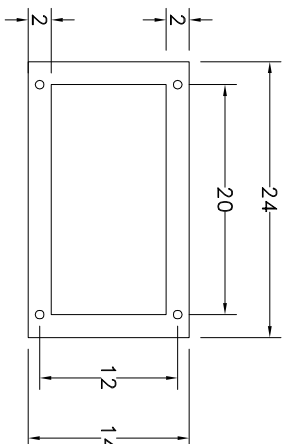
SIDE VIEW

REAR VIEW

FRONT VIEW
OUTER DOOR REMOVED

WIRING DIAGRAM

BASE DETAIL



WISDOT L 120/240V

CONSTRUCTION NOTES:

- CABINET TO BE TYPE 3R CONSTRUCTION PER UL 50 REQUIREMENTS.
- CABINET TO BE FABRICATED FROM FORMED AND WELDED .125" ALUMINUM.
- CABINET TO HAVE A CLEAR ANODIZED FINISH.
- ALL CABINET EXTERIOR HARDWARE TO BE STAINLESS STEEL.
- EXTERIOR DOOR HELD CLOSED WITH A VAULT TYPE HANDLE AND #2 UTILITY LOCK.
- EXTERIOR DOOR SHALL BE SEALED WITH CLOSED CELL 3/16" X 1" NEOPRENE GASKETING
- EXTERIOR DOOR TO HAVE A STAINLESS STEEL WIND STOP
- HINGED INNER DEAD FRONT TO BE HELD CAPTIVE WITH 1/4 TURN LATCHES.
- 8" X 10" PRINT POCKET ON REAR OF OUTER DOOR.
- THE COMPLETED ASSEMBLY TO BE 00500A LISTED. 22K AIC SHORT CIRCUIT RATING.**

BILL OF MATERIAL:

- 30 CIRCUIT, 100A, 1PH, 3W, 120/240V, 22K AIC LOAD CENTER WITH COPPER BUS BAR
- SIEMENS #P3030B100CU
- 1 - 100A 2P MAIN BREAKER #02100H
- 1 - 15A 1P BRANCH BREAKER #0115H
- 1 - 30A 2P BRANCH BREAKER #02030H
- 6 - 20A 2P BRANCH BREAKER #02020H
- SURGE PROTECTOR, 50KA SURGE CURRENT CAPACITY
- ADVANCE PROTECTION TECH. #SS0A120V2PN
- HAND-OFF-AUTO SELECTOR SWITCH
- ALLEN BRADLEY #800T-J2A
- PHOTOCELL
- AREA LIGHTING RESEARCH SST-PU-IES-UL
- PHOTOCELL BASE
- AREA LIGHTING RESEARCH AM2-NB
- 30A 3P CONTACTORS (6), 120VAC COIL
- SIEMENS #LEND0C003-120A
- 50A 6 POINT TERMINAL BLOCKS (3)
- TERMINAL BLOCKS TO HAVE CIRCUIT NUMBERS 1-T.I. #1K06

4	10-2-13	WRL	ADDED A WIND STOP
3	1-25-13	WRL	RELOCATED NEUTRAL AND GROUND BARS
2	1-23-13	WRL	REVISED PER 1-22-13 E-MAIL
1	1-22-13	WRL	REVISED TO 30A CONTACTORS
NO.	DATE	BY	REVISION DESCRIPTION
JOB NAME: WISDOT			
X			
SHEET TITLE: LIGHTING CONTRL CABINET			
100A, 1PH, 3W, 120/240V			
WISDOT L 120/240V			

DATE	1-21-13	DESIGN BY/CHECK BY/SCALE	X	X
CONTRACTOR	X	WRL	X	
ENGINEER	X			
DISTRIBUTOR	X			
SO NO. X		DRAWING NUMBER		
PO NO. X		PROD012113		
SHEET				1

THIS DOCUMENT IS THE PROPERTY OF STATES MANUFACTURING. IT CONTAINS PROPRIETARY AND CONFIDENTIAL INFORMATION WHICH MUST NOT BE DUPLICATED, USED OR DISCLOSED OTHER THAN AS EXPRESSLY AUTHORIZED BY STATES MANUFACTURING LOCATED IN MINNEAPOLIS, MINNESOTA.

