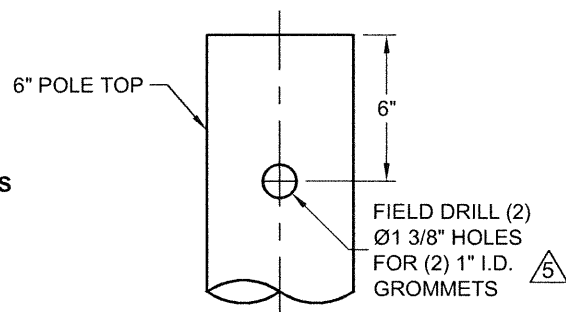
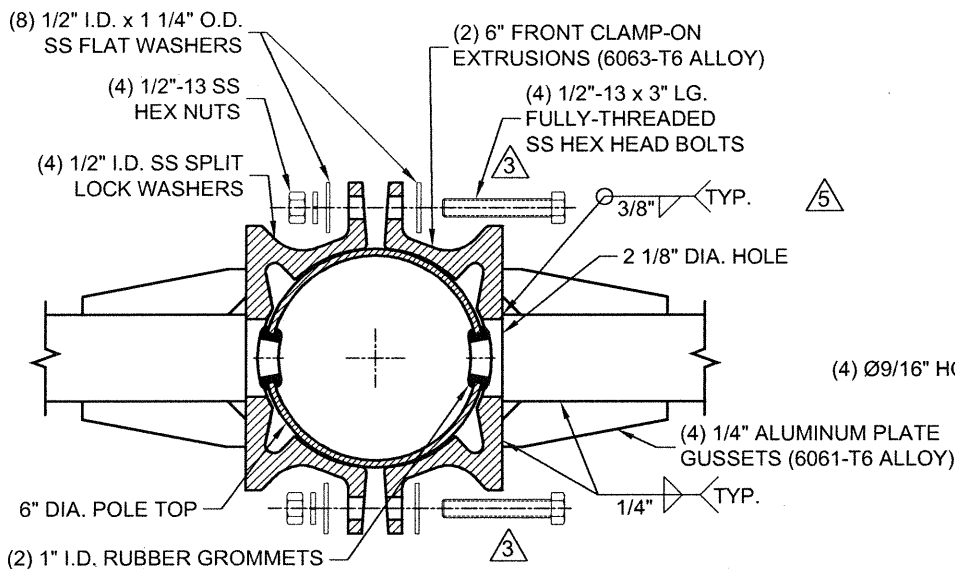


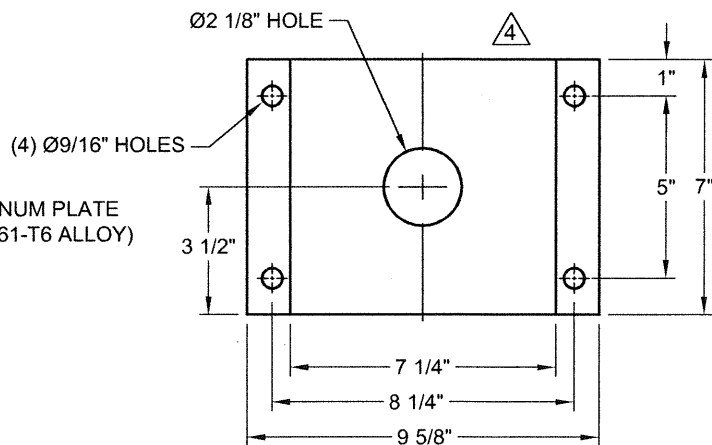
TIGHTENING SEQUENCE
FOR Ø1/2" STAINLESS STEEL BOLTS
 1. TIGHTEN WITH HAND
 2. APPLY 31.50 FT.LBS
 3. APPLY 40.00 FT.LBS
 4. APPLY 42.00 FT.LBS



POLE TOP DRILLING DETAIL



SECTION A-A



FRONT CLAMP DETAIL

DO NOT SCALE

valmont

Valmont Industries, Inc. Structures Division
 20805 Eaton Ave Farmington, Minnesota 55024-7932
 Phone: (651) 463-8990 (800) 899-7577
 Fax: (651) 463-3349

TITLE: S 10' x 36" X 3.5" SGL/DBL MS ARM 6" CL F.S.
 MODEL NO.: (1) OR (2) MB1036C60Z
 MATERIAL: ALUMINUM ALLOY
 FINISH: 100 GRIT SATIN POLISH
 PROJECT: WISDOT
 SOLD TO:
 SHIP TO:
 P.O. NO:
 REP:

QTY: -
 OWN BY: BMS
 CHK'D BY:
 APPR BY:
 DATE: 12/12/05
 DWG NO: DR1154

****CONFIDENTIAL****

The information contained in this drawing is privileged and confidential, and may be protected from disclosure. Please be aware that any use or dissemination of this drawing may be subject to legal restriction or sanction.

1	01-22-15	CH'D ARM RISE DEGREE TO 2°; ADDED NOTE	KPS
2	01/21/13	UPDATED NOTES	PVB
3	03/12/10	CHANGED PAGE NUMBERING, UPDATED DETAIL	SLF
REV	DATE	REVISION DESCRIPTION	BY
			20 / 25