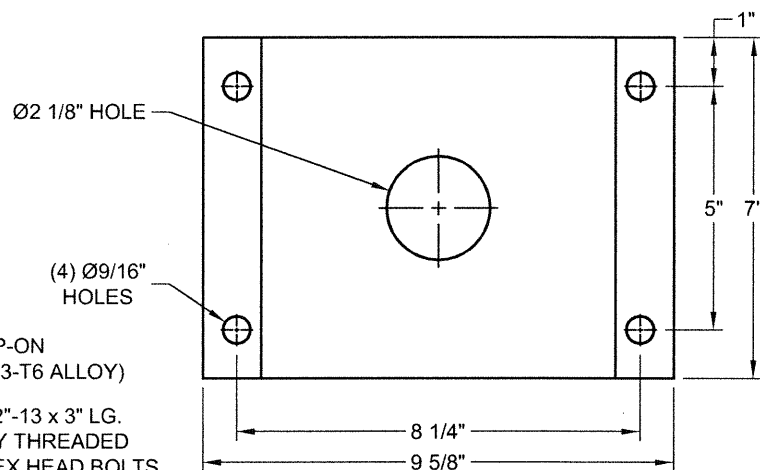
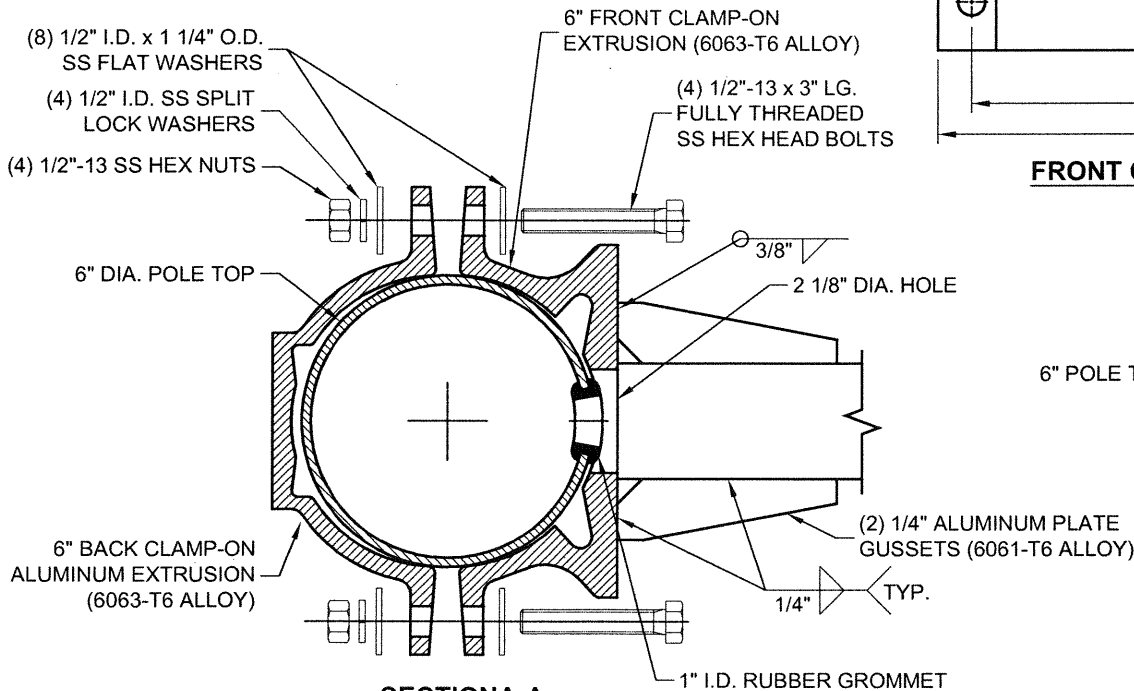


#### TIGHTENING SEQUENCE FOR Ø1/2" STAINLESS STEEL BOLTS

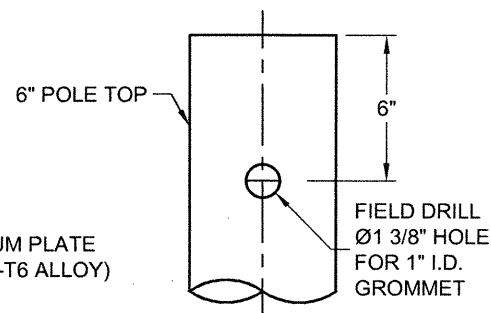
1. TIGHTEN WITH HAND
2. APPLY 31.50 FT.LBS
3. APPLY 40.00 FT.LBS
4. APPLY 42.00 FT.LBS



**FRONT CLAMP DETAIL**



**SECTION A-A**



**POLE TOP DRILLING DETAIL**




DO NOT SCALE

**valmont** 

Valmont Industries, Inc. Structures Division  
20805 Eaton Ave Farmington, Minnesota 55024-7932  
Phone: (651) 463-8990 (800) 899-7577  
Fax: (651) 463-3349

**\*\*CONFIDENTIAL\*\***

The information contained in this drawing is privileged and confidential, and may be protected from disclosure. Please be aware that any use or dissemination of this drawing may be subject to legal restriction or sanction.

TITLE: S 8' x 30" x 3.5" SGL MS ARM 6.0" CL F.S.			QTY: -	
PART NO.:	1MA0830C60Z		OWN BY:	SLF
MATERIAL:	ALUMINUM ALLOY		CHK'D BY:	
FINISH:	100 GRIT SATIN POLISH		APPR BY:	
PROJECT:	WISDOT		DATE:	03/10/11
SOLD TO:			DWG NO:	DR1154
SHIP TO:			PAGE:	
P.O. NO:			BY	12 / 25
REP:				
	01-20-15	CH'D ARM RISE DEGREE TO 3°; ADDED NOTE	KPS	
	01-22-13	ADDED GUSSETS, ADDED NOTES	PVB	
REV	DATE	REVISION DESCRIPTION	BY	