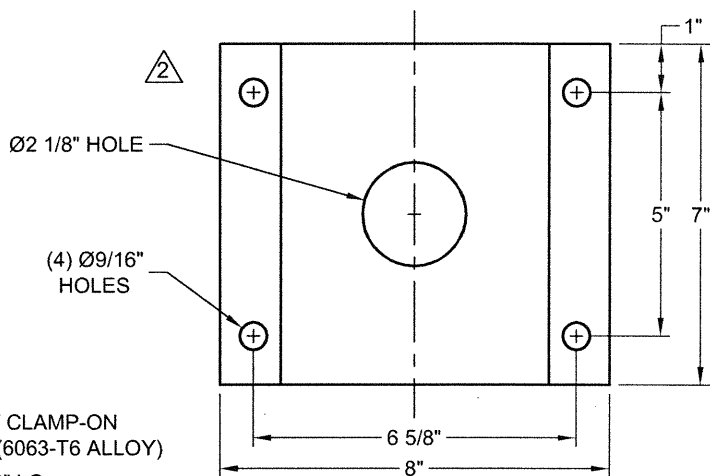
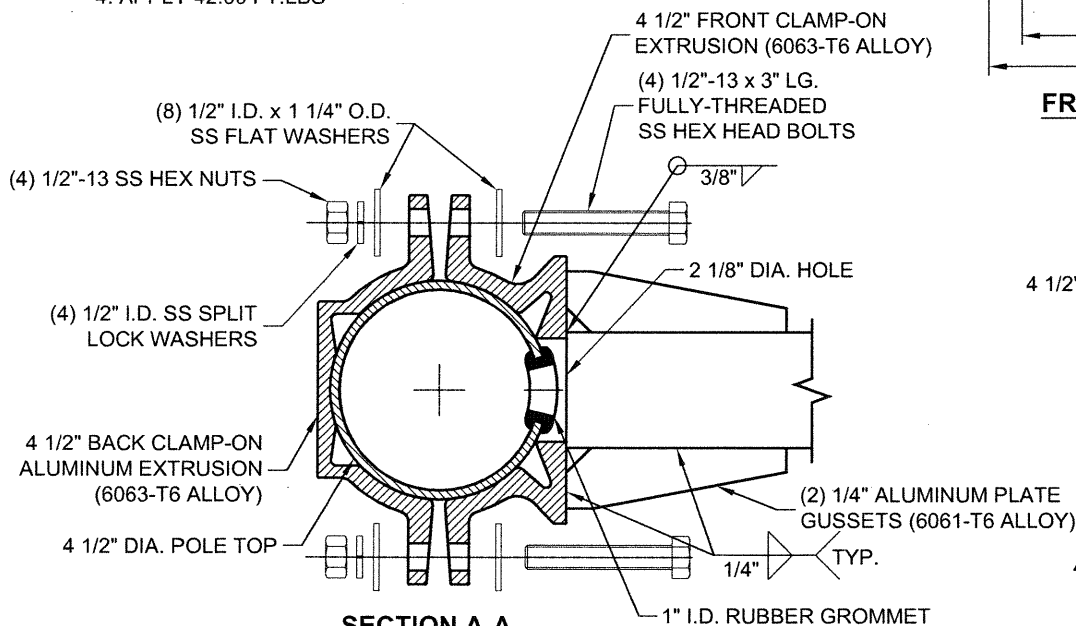


#### TIGHTENING SEQUENCE 4

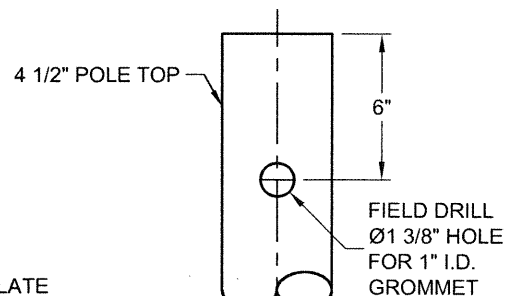
- FOR Ø1/2" STAINLESS STEEL BOLTS
1. TIGHTEN WITH HAND
  2. APPLY 31.50 FT.LBS
  3. APPLY 40.00 FT.LBS
  4. APPLY 42.00 FT.LBS



**FRONT CLAMP DETAIL**



**SECTION A-A**



**POLE TOP DRILLING DETAIL**

DO NOT SCALE

**valmont**

Valmont Industries, Inc. Structures Division  
20805 Eaton Ave. Farmington, Minnesota 55024-7932  
Phone: (651) 463-8990 (800) 899-7577  
Fax: (651) 463-3349

**\*\*CONFIDENTIAL\*\***

The information contained in this drawing is privileged and confidential, and may be protected from disclosure. Please be aware that any use or dissemination of this drawing may be subject to legal restriction or sanction.

TITLE: S 8' x 30" x 3.5" SGL MS ARM 4.5" CL F.S.

PART NO.: 1MA0830C45Z

MATERIAL: ALUMINUM ALLOY

FINISH: 100 GRIT SATIN POLISH

PROJECT: WISDOT

SOLD TO:

SHIP TO:

P.O. NO:

REP:

01-20-15	CH'D ARM RISE DEGREE TO 3°; ADDED NOTE	KPS
01-22-13	ADDED GUSSETS, ADDED NOTES	PVB
03-10-11	CHG'D PAGE NUMBERING, UPDATED DETAIL	SLF
REV	DATE	REVISION DESCRIPTION

QTY: -

DWN BY: BMS

CHK'D BY:

APPR BY: *CEW*

DATE: 12/12/05

DWG NO: DR1154

PAGE: 11 / 25