

CAST ALUMINUM
POLE CAP WITH
STAINLESS STEEL
HARDWARE

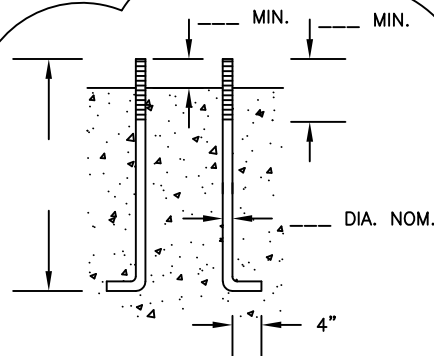
1 3/8" DIA. WIRE
ACCESS HOLE
(FIELD DRILLED)
W/ RUBBER GROMMET

"B" TOP DIA.

"J" HOOK WELDED
INSIDE POLE SHAFT

"D"

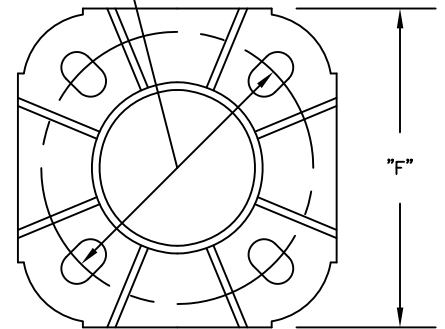
SPUN TAPERED ALUMINUM SHAFT ALLOY 6063-T6
"A" BOTTOM DIA., "B" TOP DIA., "C" WALL TH'K.
"D" OVERALL LENGTH, MECH. ROTARY SANDED 60 GRIT



ANCHOR BOLT DETAIL (4 REQ'D.)

ANCHOR BOLTS _____ LONG
WITH _____ HOOK, _____ THREAD
ASTM A-576, TOP _____ GALVANIZED
PER ASTM A-153 WITH ALL NUTS, FLATWASHERS
AND LOCKWASHERS.

"E"
BOLT CIRCLE
DIA.



CAST ALUMINUM SHOEBASE

ALLOY 356-T6
WITH 4 CAST ALUMINUM BOLT COVERS
WITH ST. ST'L. ATTACHMENT SCREWS
STAMP ".188" PER SPECIFICATIONS

4" x 6" NOMINAL, REINFORCED, FLUSH HANDHOLE
WITH COVER, (USE 1/4-20NC ST. ST'L. HEX CAP SCREWS)
AND 1/4-20NC GROUND PROVISION OPPOSITE HANDHOLE.

ANCHOR BOLTS NOT
INCLUDED (BY OTHERS)

NOTE: HANDHOLE SHALL FACE
AWAY FROM TRAFFIC

16"

"A" BOTTOM DIA.

4043

CAST ALUMINUM SHOEBASE WITH
CIRCUMFERENTIAL WELDS BOTH
INSIDE AND OUT

REVISIONS		
NO.	DATE	BY
1		
2		
3		
4		
5		

SCHEDULE

CATALOG #	QTY	A	B	C	D	E	F
FPFLS84535CD-DC-WISDOT-TYPE6		8"	4 1/2"	.219"	35'	11" THRU 12"	12"

REFERENCE: WISDOT - TYPE 6 ALUMINUM POLE

"SPUN TAPERED ALUMINUM LIGHTING STANDARD"

WISDOT "TYPE 6" POLE

 <p>ALUMINUM LIGHT STANDARDS TUBULAR METAL PRODUCTS</p>	<p>95 GNARLED HOLLOW RD. EAST SETAUKET, N.Y. 11733</p>		 <p>TUBULAR PRODUCTS, INC.</p>
	<p>PROJECT: WISCONSIN DOT</p>		
<p>CONTRACTOR:</p>		<p>DIST:</p>	
<p>DRAWN BY SAF</p>		<p>DATE 03/27/17</p>	<p>MATERIAL AS NOTED</p>
<p>CHK'D</p>		<p>APP'D</p>	<p>DRAWING NO.</p>
<p>SCALE NONE</p>		<p>WORK ORDER #</p>	<p>14196</p>