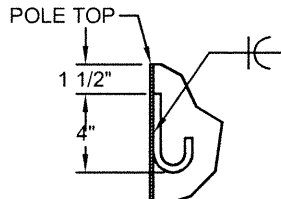
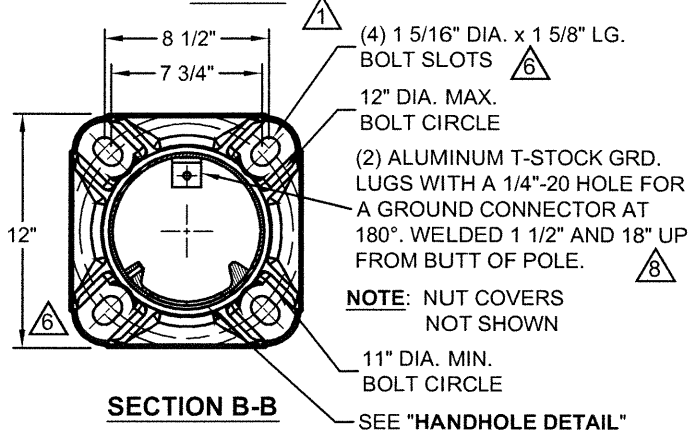


SEE "J-HOOK
MOUNTING DETAIL"

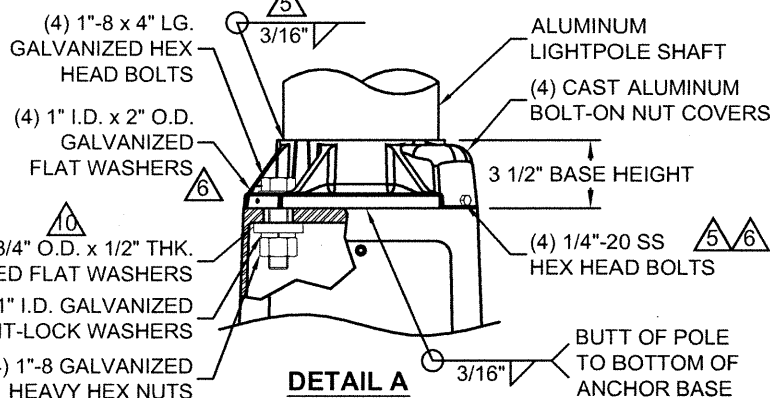
4', 6', OR 8' SPAN
SGL MAST ARM
(SEE "PAGES 7, 9, & 11")



**J-HOOK MOUNTING
DETAIL**



SECTION B-B



DETAIL A

FACTORY INSTALLED
VIBRATION DAMPENER
LOCATED 18'-0" FROM BUTT
OF POLE

NOTE: ALL STAINLESS STEEL
HARDWARE TO BE COATED WITH
ANTI-SEIZE COMPOUND BY
CONTRACTOR IF REQUIRED

8" O.D. x .188" WALL

ALUMINUM HANDHOLE
SEE "HANDHOLE DETAIL"

I.D. TAG 7 1/2" UP FROM BUTT OF
POLE, SAME SIDE AS HANDHOLE
(SEE "PAGE 25")

CAST ALUMINUM ANCHOR BASE
SEE "SECTION B-B" & "DETAIL A"

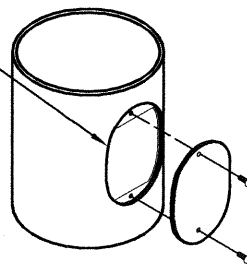
TRANSFORMER BASE
(SEE "PAGE 22")

1"-8 x 36" LG. PARTIALLY
GALVANIZED ANCHOR BOLTS
(MIN. YIELD STRENGTH 55 KSI)

FOOTING, REINFORCING
ROD, AND PVC CONDUIT
(BY OTHERS)

ALUMINUM HANDHOLE WITH A 4" x 6"
FLUSH FITTING ALUMINUM DOOR
ATTACHED WITH (2) 1/4"-20 x 3/4" LG. S.S.
HEX HEAD BOLTS. WITH TAPPED
5/16"-18 HOLE IN EXTRUSION
FOR A GROUND CONNECTOR.

POLE RATING (PER AASHTO 2013):
3-SEC GUST WIND SPEED: 90 MPH MAX
EPA (LUMINAIRE): 1.5 SQ. FT. MAX
WEIGHT (LUMINAIRE): 50 LBS MAX
DESIGN LIFE 50 YEARS



HANDHOLE DETAIL

**CONTACT VALMONT IF PEDESTRIAN
PUSH BUTTON IS REQUIRED FOR
POLE APPLICATION**

DO NOT SCALE

valmont

Valmont Industries, Inc. Structures Division
20805 Eaton Ave. Farmington, Minnesota 55024-7932
Phone: (651) 463-8990 (800) 899-7577
Fax: (651) 463-3349

****CONFIDENTIAL****

The information contained in this drawing is privileged and confidential,
and may be protected from disclosure. Please be aware that any use or
dissemination of this drawing may be subject to legal restriction or sanction.

TITLE:				QTY:	
S TYPE 5 TRANSFORMER BASE LIGHTPOLES				-	
MODEL NO.: 300045806T4E				OWN BY:	
MATERIAL: ALUMINUM ALLOY				BMS	
FINISH: 100 GRIT SATIN POLISH				CHK'D BY:	
PROJECT:				APPR BY:	
SOLD TO: WISDOT				CEN	
SHIP TO:				DATE:	
P.O. NO:				12/12/05	
REP:				DWG NO:	
01-19-15 REV'D NOTE; CH'D EPA TO 2013; ADDED NOTE				DR1154	
08-25-14 REVISED J-HOOK DETAIL				MPS	
01-31-14 CHG'D WASHER DIM.				CEN	
REV DATE REVISION DESCRIPTION				BY	
				1 / 25	