

CAST ALUMINUM
POLE CAP WITH
STAINLESS STEEL
HARDWARE

1 3/8" DIA. WIRE
ACCESS HOLE
(FIELD DRILLED)
W/ RUBBER GROMMET

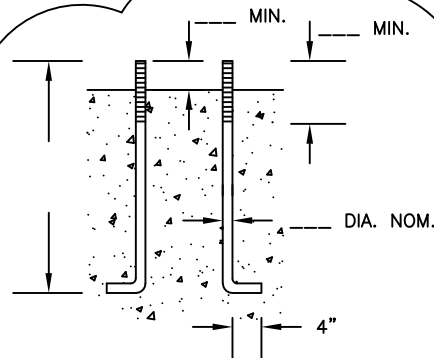
"B" TOP DIA.

PROVIDE WELDED
INTERNAL J-HOOK @
TOP OF POLE

TOP 5' STRAIGHT

"D"

SPUN TAPERED ALUMINUM SHAFT ALLOY 6063-T6
"A" BOTTOM DIA., "B" TOP DIA., "C" WALL TH'K.
"D" OVERALL LENGTH, MECH. ROTARY SANDED 60 GRIT
AFTER FABRICATION



ANCHOR BOLT DETAIL (4 REQ'D.)

ANCHOR BOLTS _____ LONG
WITH _____ HOOK, _____ THREAD
ASTM A-576, TOP _____ GALVANIZED
PER ASTM A-153 WITH ALL NUTS, FLATWASHERS
AND LOCKWASHERS.

4" x 6" NOMINAL, REINFORCED, FLUSH HANDHOLE
WITH COVER, (USE 1/4-20NC ST. ST'L. HEX CAP SCREWS)
AND 1/4-20NC GROUND PROVISION OPPOSITE HANDHOLE.

NOTE: HANDHOLE SHALL FACE
AWAY FROM TRAFFIC

"A" BOTTOM DIA.

16"

4043

CAST ALUMINUM SHOEBASE WITH
CIRCUMFERENTIAL WELDS BOTH
INSIDE AND OUT

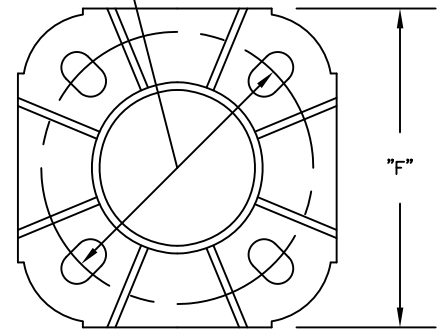
◇ ————— SCHEDULE ————— ◇

CATALOG #	QTY	A	B	C	D	E	F
FPFLS865820F-DC-WISDOT		8"	6 5/8"	.375"	20'	11" THRU 12"	12"

REFERENCE:
WISDOT TYPE 2 ALUMINUM POLE

"SPUN TAPERED ALUMINUM LIGHTING STANDARD"

"E"
BOLT CIRCLE
DIA.





CAST ALUMINUM SHOEBASE

ALLOY 356-T6
WITH 4 CAST ALUMINUM BOLT COVERS
WITH ST. ST'L. ATTACHMENT SCREWS
STAMP BASE ".375" PER SPECIFICATIONS

ANCHOR BOLTS NOT
INCLUDED (BY OTHERS)

WISDOT "TYPE 2" POLE

REVISIONS		
NO.	DATE	BY
1		
2		
3		
4		
5		

		95 GNARLED HOLLOW RD. EAST SETAUKET, N.Y. 11733			
PROJECT: WISCONSIN DOT		DIST:			
CONTRACTOR:		AGENT: JIM HERRD			
DRAWN BY	SAF	DATE	03/27/17	MATERIAL	AS NOTED
CHK'D		APP'D		DRAWING NO.	14194
SCALE	NONE	WORK ORDER #			