

## **INTERIOR LIGHTING FIXTURES AND LAMPS**

### **PART 1 - GENERAL**

#### **1.02 SCOPE**

- A. The work under this section includes inspection pit luminaires

#### **1.04 SUBMITTALS**

- A. Include outline drawings, lamp data, support points, weights, accessory information and performance data for each luminaire type.
- B. For each luminaire type, submit luminaire information and submit catalog cuts with highlighted catalog numbers and required accessories.

#### **1.05 OPERATION AND MAINTENANCE DATA**

- A. Supply all relevant operations and maintenance data.

### **PART 2 – PRODUCTS**

- A. Inspection pit lights shall be:

QTY	Manufacturer	Catalog Number	Volts	Lamps	Watts/Fixture
20	Columbia	LXEM-4-40-ML-RFA-E-U	120	LED	53

Substitutions by other manufacturers will be considered. Submit substitution requests in regards to equal products as follows.

**A.PRODUCT SUBSTITUTIONS WILL ONLY BE CONSIDERED DURING BIDDING**

B.SUBSTITUTIONS WILL ONLY BE ALLOWED WITH THE PRIOR APPROVAL OF OWNER DURING BIDDING.

## **2.02 LAMPS**

A. Manufacturer names and catalog numbers are used to develop quality and performance requirements only. Lamps manufactured by others will be accepted provided they meet or exceed the specifications.

B. All lamps shall be new.

## **PART 3 - EXECUTION**

### **3.01 INSTALLATION**

A. Install in accordance with manufacturer's instructions.

B. Install surface mounted luminaires plumb and adjust to align with building lines and with each other. Secure to prohibit movement.

C. The Contractor shall install fixture supports as required. Fixture installations with fixtures supported only by insecure boxes will be rejected. It shall be the Contractor's responsibility to support all lighting fixtures adequately, providing extra steel work for the support of fixtures if required. Any components necessary for mounting fixtures shall be provided by the Contractor. No plastic, composition or wood type anchors shall be used.

D. Install accessories furnished with each luminaire.

E. Bond fixtures and metal accessories to branch circuit equipment grounding conductor.

F. Install specified lamps in each luminaire and exit sign.

G. All lamps shall be delivered to the job in sealed cartons and protected from dirt and dust during storage on the project. Lamps shall be taken directly from the cartons and installed in the fixture with special care so that they do not become dusty and are not soiled in the operation.

H. All new lamps shall be operational at the Substantial Completion of the project.

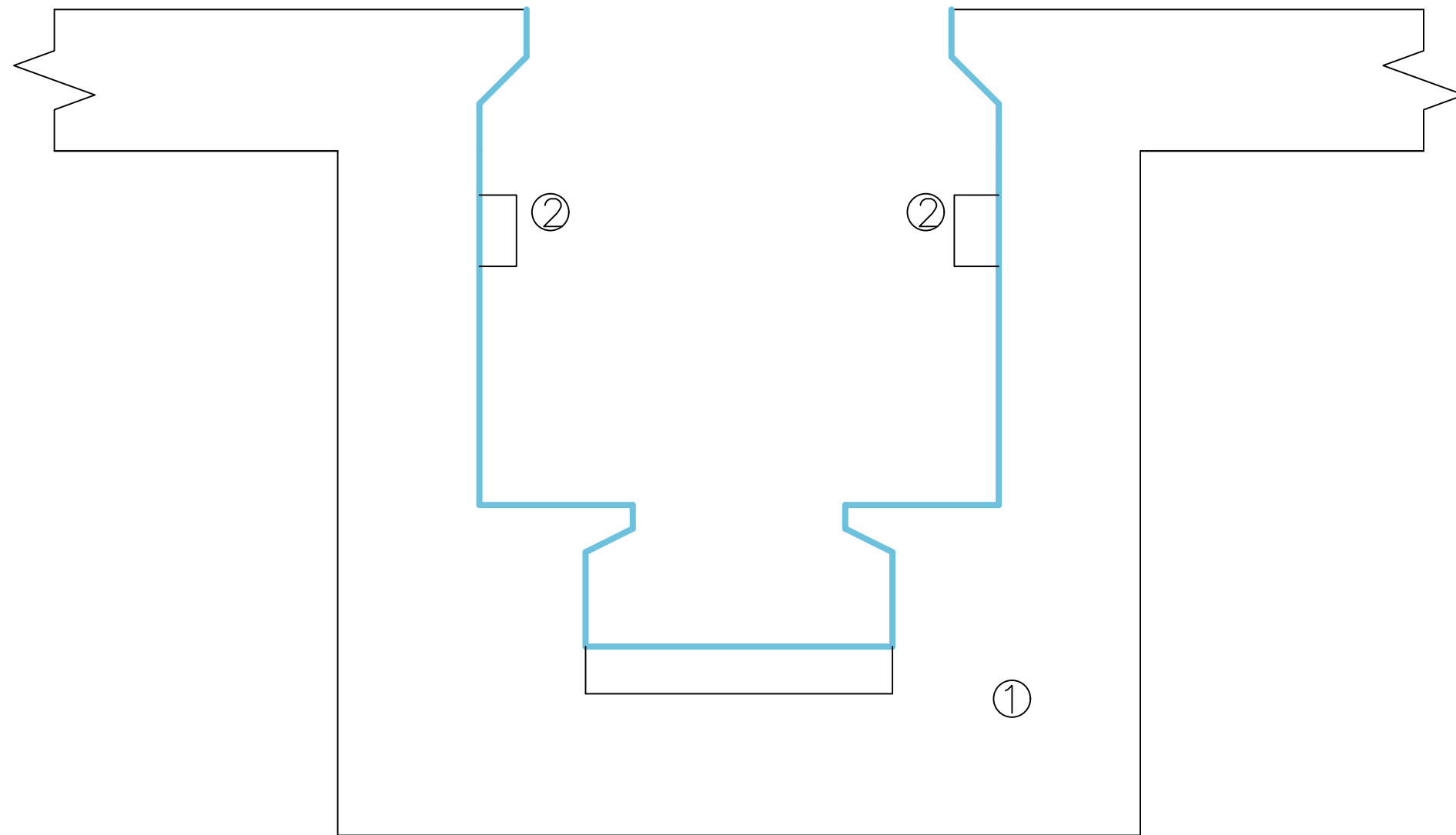
### **3.02 ADJUSTING AND CLEANING**

A. Align luminaires and clean lenses and diffusers at completion of Work. Clean paint splatters, dirt, and debris from installed luminaires.

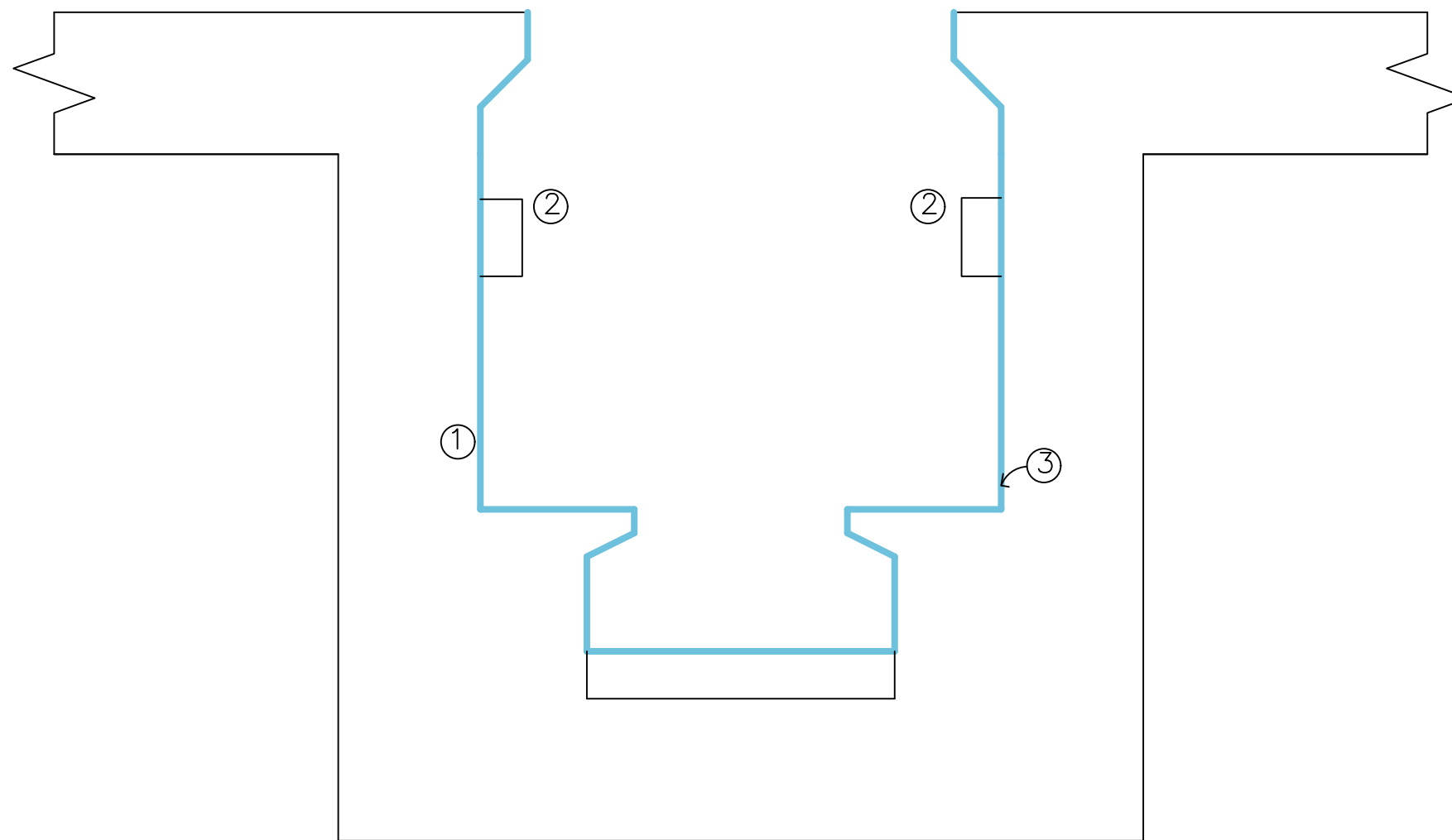
- B. Aim and adjust luminaires as indicated on Drawings or as directed by the owner
- C. Touch up luminaire finish at completion of work.

### **3.04 FIELD QUALITY CONTROL**

- A. Operate each luminaire after installation and connection. Inspect for proper connection and operation.



- ① Prep inspection pit walls, floors, and step to remove all coatings to bare concrete.
- ② Remove existing light fixtures and conduit



① Apply HTCS.

② Furnish and install new LED pit lighting. (10 lights per pit.)

③ Furnish and apply chemical resistant top coat.